

5/14/99



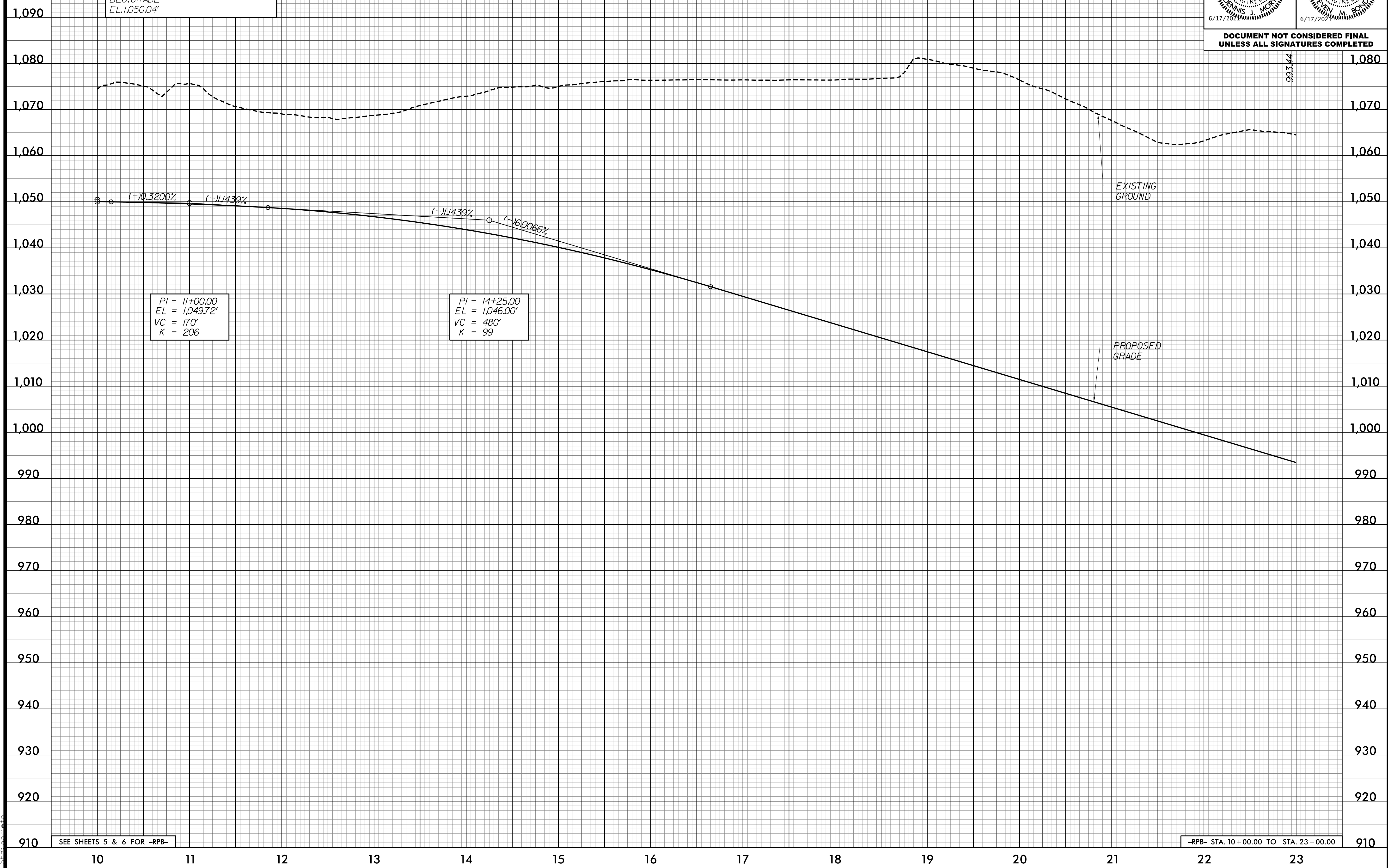
2610 WYCLIFF ROAD
SUITE 410
RALEIGH, NC 27607
PHONE: 919.881.9939
NC COA No. F-09251

| | | |
|-----------------------------------|---------------------|-----------------|
| PROJECT REFERENCE NO. R-2233BB | | SHEET NO. 56 |
| ROADWAY DESIGN ENGINEER | HYDRAULICS ENGINEER | |
| | | |

DOCUMENT NOT CONSIDERED FINAL
UNLESS ALL SIGNATURES COMPLETED

-RPB-

-L3- POT Sta. 755+52.50=
-RPB- TS Sta. 10+00.00 47.00' LT.
BEG. GRADE
EL. 1,050.04'



SEE SHEETS 5 & 6 FOR -RPB-

-RPB- STA. 10+00.00 TO STA. 23+00.00

4/24/2020 4:47:18 PM
R-2233BB - R.O.Y. PFL 56.DGN
15:55:20