

5/14/99



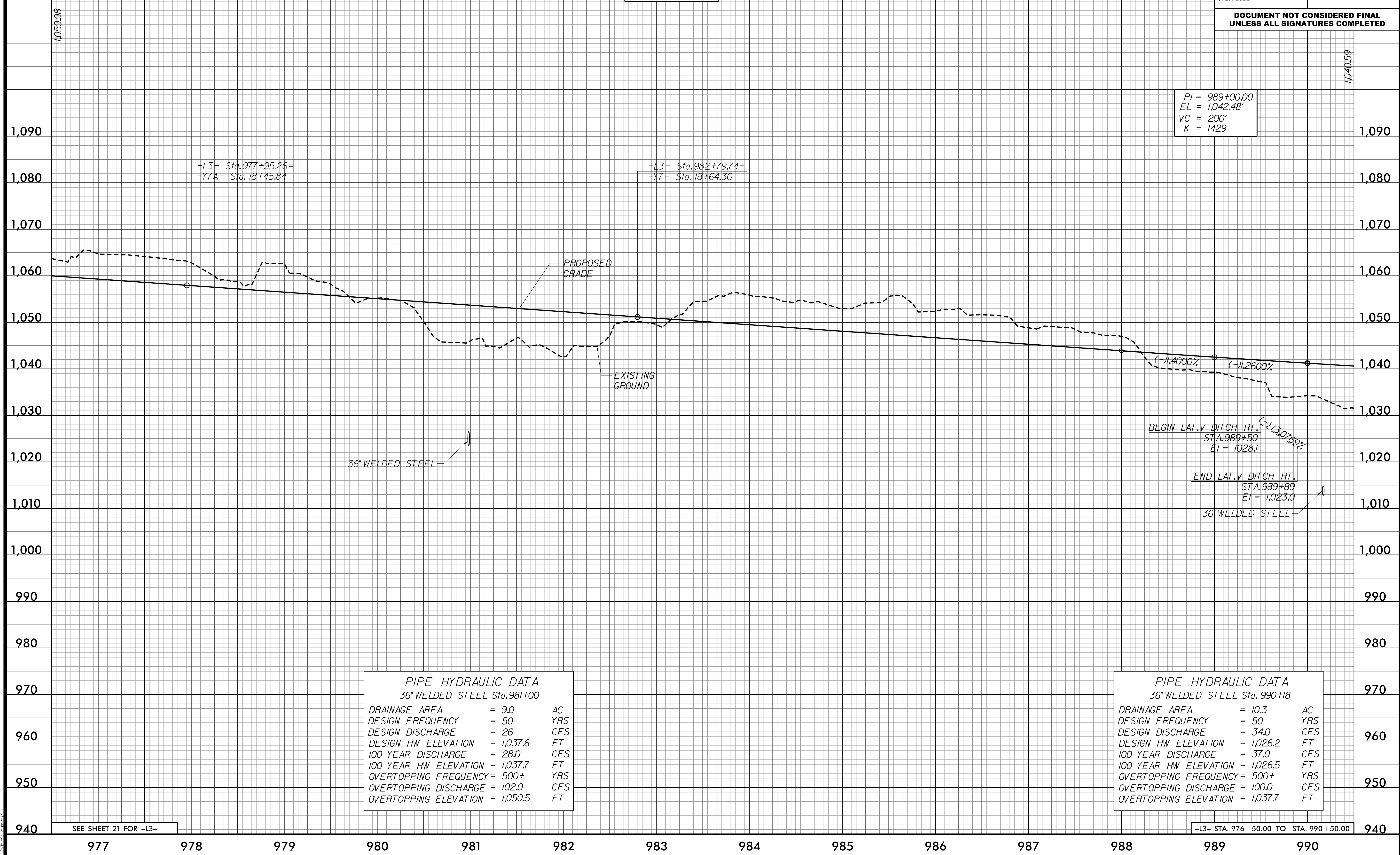
2610 WYCLIFF ROAD  
SUITE 410  
RALEIGH, NC 27607  
PHONE: 919.881.9939  
NC COA No. F-0929

PROJECT REFERENCE NO. R-2233BB	SHEET NO. 52
ROADWAY DESIGN ENGINEER 	HYDRAULICS ENGINEER 

DOCUMENT NOT CONSIDERED FINAL  
UNLESS ALL SIGNATURES COMPLETED

**-L3-**

BM #22  
-L3- STA 983+16.40  
621.23' LEFT  
ELEV. 990.41'



PI = 989+00.00  
EL = 1,042.48'  
VC = 200'  
K = 1429

-L3- Sta. 977+95.26=  
-Y7A- Sta. 18+45.84

-L3- Sta. 982+79.74=  
-Y7- Sta. 18+64.30

36" WELDED STEEL

BEGIN LAT.V DITCH RT.  
STA. 989+50  
EI = 1028.1

END LAT.V DITCH RT.  
STA. 989+89  
EI = 1023.0

PIPE HYDRAULIC DATA  
36" WELDED STEEL Sta. 981+00

DRAINAGE AREA	= 9.0	AC
DESIGN FREQUENCY	= 50	YRS
DESIGN DISCHARGE	= 26	CFS
DESIGN HW ELEVATION	= 1,037.6	FT
100 YEAR DISCHARGE	= 28.0	CFS
100 YEAR HW ELEVATION	= 1,037.7	FT
OVERTOPPING FREQUENCY	= 500+	YRS
OVERTOPPING DISCHARGE	= 102.0	CFS
OVERTOPPING ELEVATION	= 1,050.5	FT

PIPE HYDRAULIC DATA  
36" WELDED STEEL Sta. 990+18

DRAINAGE AREA	= 10.3	AC
DESIGN FREQUENCY	= 50	YRS
DESIGN DISCHARGE	= 34.0	CFS
DESIGN HW ELEVATION	= 1,026.2	FT
100 YEAR DISCHARGE	= 37.0	CFS
100 YEAR HW ELEVATION	= 1,026.5	FT
OVERTOPPING FREQUENCY	= 500+	YRS
OVERTOPPING DISCHARGE	= 100.0	CFS
OVERTOPPING ELEVATION	= 1,037.7	FT

SEE SHEET 21 FOR -L3-

-L3- STA. 976+50.00 TO STA. 990+50.00

6/16/2009 9:57:45 AM  
R:\PROJECTS\2009\2233BB\_R01\PEL52.DGN  
Dennis Morley