

5/14/99



2610 WYCLIFF ROAD  
SUITE 410  
RALEIGH, NC 27607  
PHONE: 919.881.9939  
NC COA No. F-09251

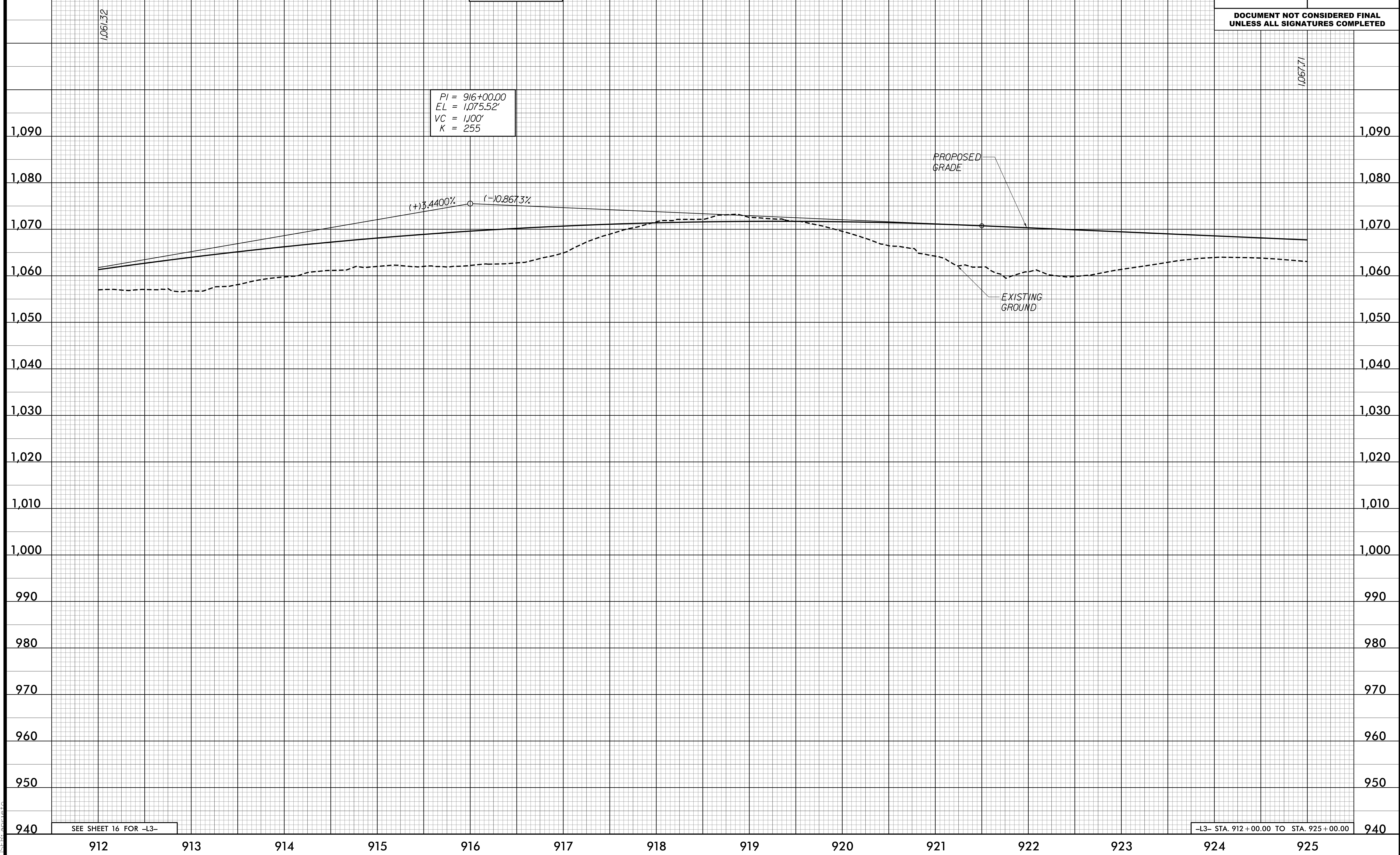
PROJECT REFERENCE NO. R-2233BB		SHEET NO. 47
ROADWAY DESIGN ENGINEER	HYDRAULICS ENGINEER	

**DOCUMENT NOT CONSIDERED FINAL  
UNLESS ALL SIGNATURES COMPLETED**

# -L3-

BM #18  
-L3- STA 916 + 49.08  
685.23' LEFT  
ELEV. 1030.87'

PI = 916+00.00  
EL = 1,075.52'  
VC = 1,100'  
K = 255



SEE SHEET 16 FOR -L3-

-L3- STA. 912 + 00.00 TO STA. 925 + 00.00

4/24/2020 4:55:32 PM  
R-2233BB-F04\_PFL47.DGN  
USER: dmoran