

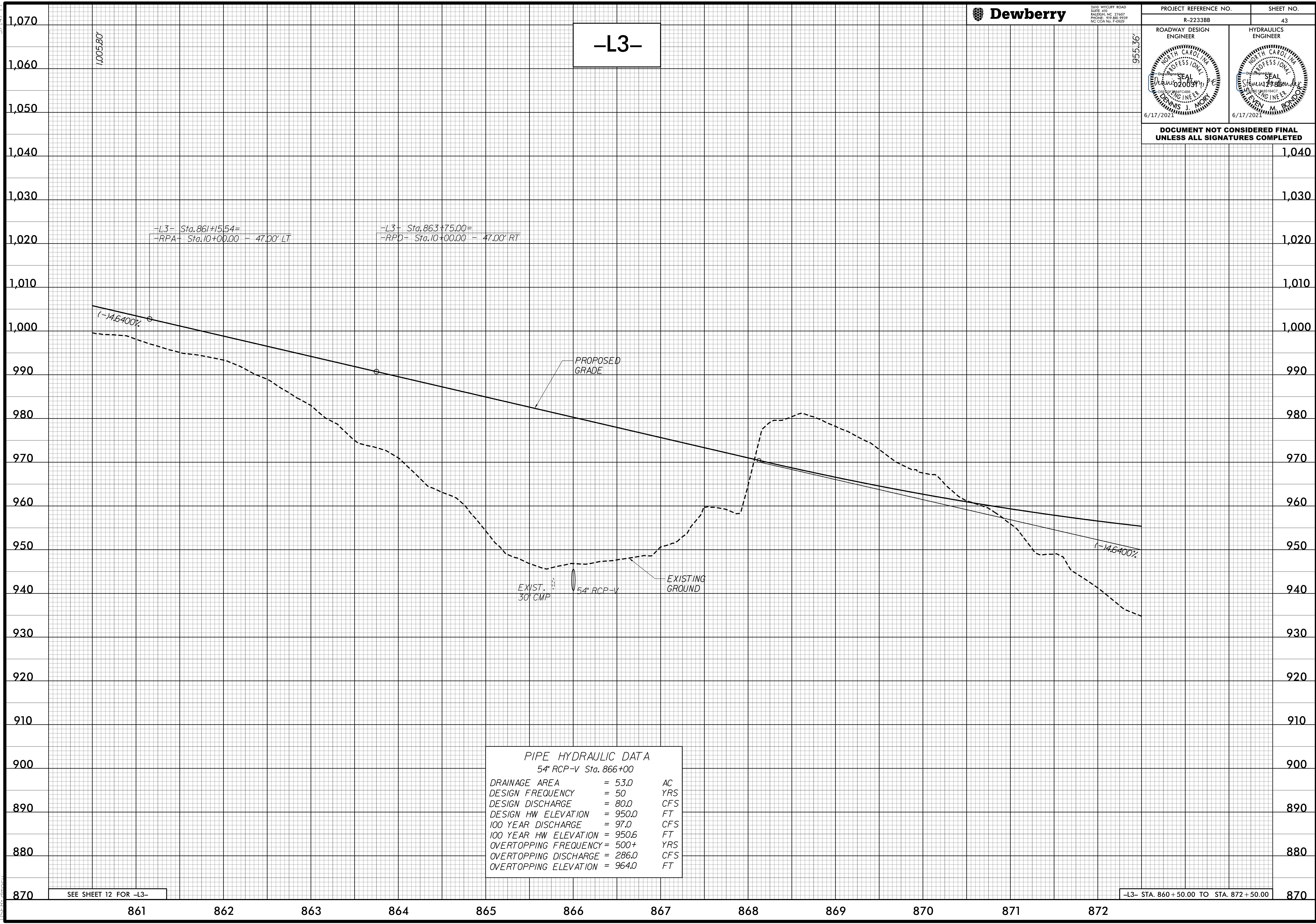
5/14/99



2610 WYCLIFF ROAD
SUITE 410
RALEIGH, NC 27607
PHONE: 919.881.9939
NC COA No. F-0929

PROJECT REFERENCE NO. R-2233BB	SHEET NO. 43
ROADWAY DESIGN ENGINEER 	HYDRAULICS ENGINEER

DOCUMENT NOT CONSIDERED FINAL
UNLESS ALL SIGNATURES COMPLETED



-L3-

-L3- Sta. 861+15.54=
-RPA- Sta. 10+00.00 - 47.00' LT

-L3- Sta. 863+75.00=
-RPD- Sta. 10+00.00 - 47.00' RT

(-14.6400%)

PROPOSED GRADE

EXIST. 30' CMP

54" RCP-V

EXISTING GROUND

(-14.6400%)

PIPE HYDRAULIC DATA		
54" RCP-V Sta. 866+00		
DRAINAGE AREA	= 53.0	AC
DESIGN FREQUENCY	= 50	YRS
DESIGN DISCHARGE	= 80.0	CFS
DESIGN HW ELEVATION	= 950.0	FT
100 YEAR DISCHARGE	= 97.0	CFS
100 YEAR HW ELEVATION	= 950.6	FT
OVERTOPPING FREQUENCY	= 500+	YRS
OVERTOPPING DISCHARGE	= 286.0	CFS
OVERTOPPING ELEVATION	= 964.0	FT

SEE SHEET 12 FOR -L3-

-L3- STA. 860+50.00 TO STA. 872+50.00

6/16/2009 9:47:53 AM
6/16/2009 9:47:53 AM
R-2233BB - RDY_PFL 43.DGN
11:58:40 AM