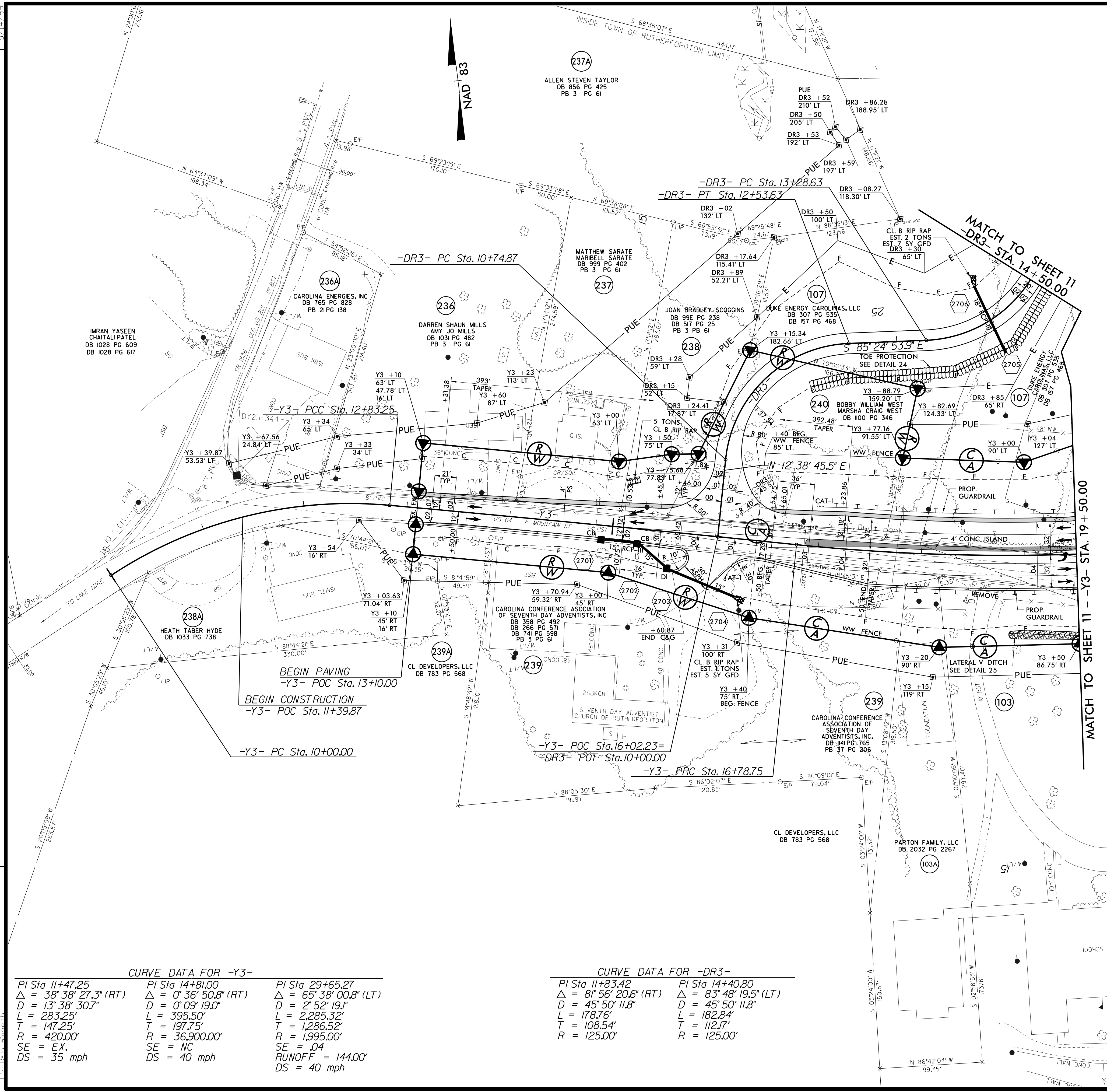


RW SHEET NO.	
ROADWAY DESIGN ENGINEER NOT A CERTIFIED DOCUMENT AS TO THE ORIGINAL DOCUMENT BUT ONLY AS TO THE REVISIONS. THIS DOCUMENT ORIGINALLY ISSUED AND SEALED BY : DENNIS J. MORY PE# 020031 ON 9/14/2021 THIS DOCUMENT IS ONLY CERTIFIED AS TO THE REVISIONS.	HYDRAULICS ENGINEER NOT A CERTIFIED DOCUMENT AS TO THE ORIGINAL DOCUMENT BUT ONLY AS TO THE REVISIONS. THIS DOCUMENT ORIGINALLY ISSUED AND SEALED BY : STEVEN M. BONDOR PE# 012786 ON 9/14/2021 THIS DOCUMENT IS ONLY CERTIFIED AS TO THE REVISIONS.

DOCUMENT NOT CONSIDERED FINAL UNLESS ALL SIGNATURES COMPLETED

--	--

REVISIONS
CONSTRUCTION REV. - APRIL 29, 2022 - Revised payment width of -DR3- to be 20' and increased radii of driveway tie to -Y3- to accommodate WB-62. Also pulled back nose of concrete island along -Y3- at -DR3- to allow left turn of a WB-62 onto -Y3-



CURVE DATA FOR -Y3-

PI Sta 11+47.25 Δ = 38° 38' 27.3" (RT) D = 13' 38' 30.7" L = 283.25' T = 147.25' R = 420.00' SE = EX. DS = 35 mph	PI Sta 14+81.00 Δ = 0° 36' 50.8" (RT) D = 0' 09' 19.0" L = 395.50' T = 197.75' R = 36,900.00' SE = NC DS = 40 mph	PI Sta 29+65.27 Δ = 65° 38' 00.8" (LT) D = 2' 52' 19.1" L = 2,285.32' T = 1,286.52' R = 1,995.00' SE = .04 RUNOFF = 144.00' DS = 40 mph
--	--	---

CURVE DATA FOR -DR3-

PI Sta 11+83.42 Δ = 81° 56' 20.6" (RT) D = 45° 50' 11.8" L = 178.76' T = 108.54' R = 125.00'	PI Sta 14+40.80 Δ = 83° 48' 19.5" (LT) D = 45° 50' 11.8" L = 182.84' T = 112.17' R = 125.00'
---	---

SEE SHEET 64 FOR -Y3- PROFILE
SEE SHEET 74 FOR -DR3- PROFILE
SEE SHEET 2B-4 FOR CONC. ISLAND DETAILS
SEE SHEETS 2D-1 THRU 2D-9 FOR DRAINAGE DETAILS

4/29/2022 1:06:35 PM
USER: J. MORY
FILE: PSH27.DGN