



2410 WYCLIFF ROAD  
SUITE 410  
RALEIGH, NC 27607  
PHONE: 919.883.9329  
NC CCA No. F-0029

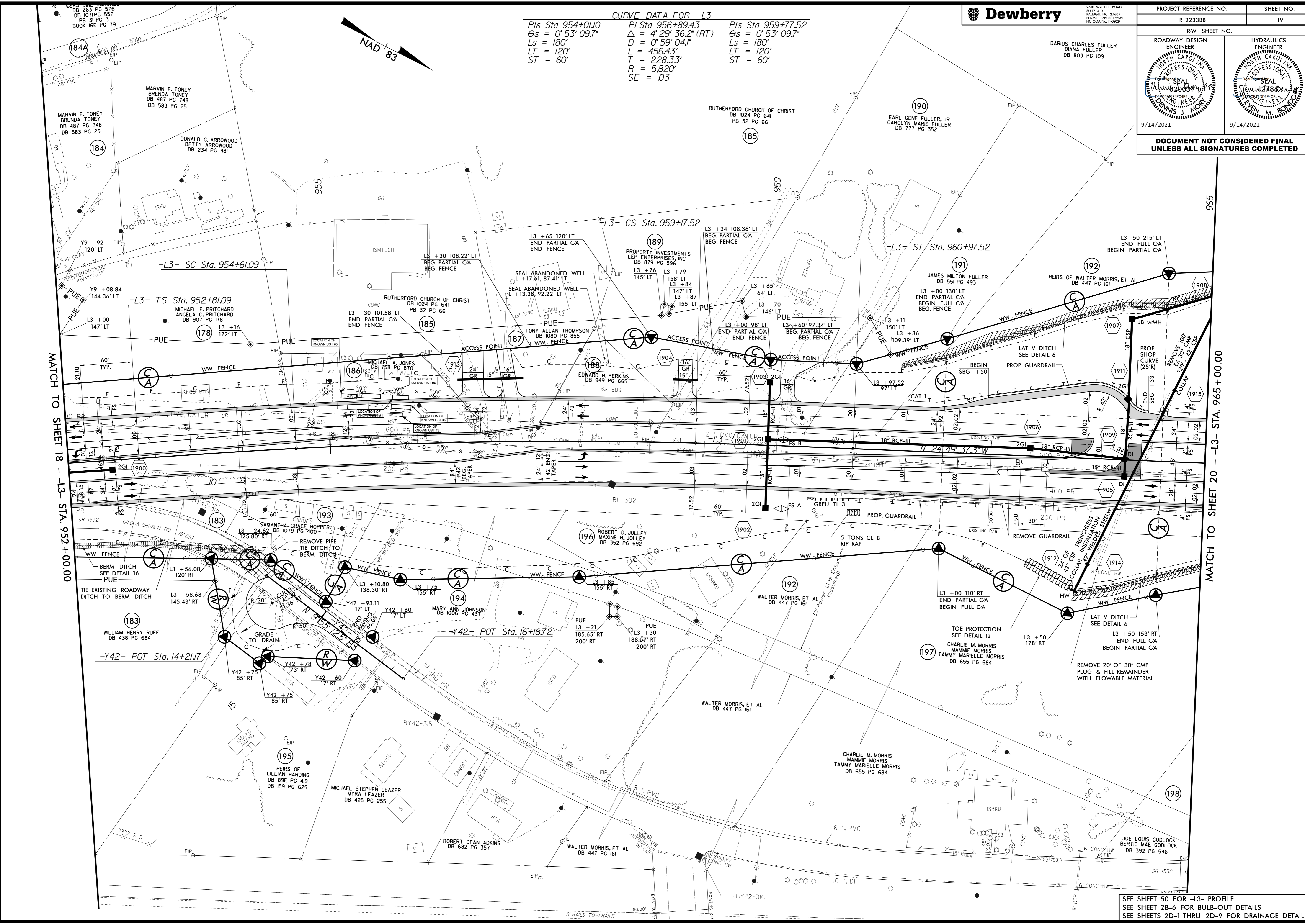
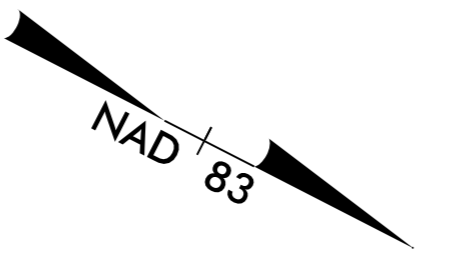
PROJECT REFERENCE NO.	SHEET NO.
R-2233BB	19
RW SHEET NO.	

ROADWAY DESIGN ENGINEER DIANA FULLER 9/14/2021	HYDRAULICS ENGINEER DANNIS M. MORRIS 9/14/2021
--	--

DOCUMENT NOT CONSIDERED FINAL  
UNLESS ALL SIGNATURES COMPLETED

**CURVE DATA FOR -L3-**

Pls Sta 954+01.00	Pls Sta 956+89.43	Pls Sta 959+77.52
$\theta_s = 0^\circ 53' 09.7''$	$\Delta = 4^\circ 29' 36.2''$ (RT)	$\theta_s = 0^\circ 53' 09.7''$
$L_s = 180'$	$D = 0^\circ 59' 04.1''$	$L_s = 180'$
$LT = 120'$	$L = 456.43'$	$LT = 120'$
$ST = 60'$	$T = 228.33'$	$ST = 60'$
	$R = 5,820'$	
	$SE = .03$	



MATCH TO SHEET 18 - L3- STA. 952 + 00.00

MATCH TO SHEET 20 - L3- STA. 965 + 00.00

SEE SHEET 50 FOR -L3- PROFILE  
SEE SHEET 2B-6 FOR BULB-OUT DETAILS  
SEE SHEETS 2D-1 THRU 2D-9 FOR DRAINAGE DETAILS

9/13/2021 12:08:08 PM  
L3-2B-19.dwg  
L3-2B-19.dwg