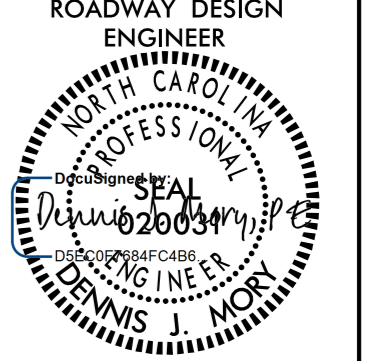
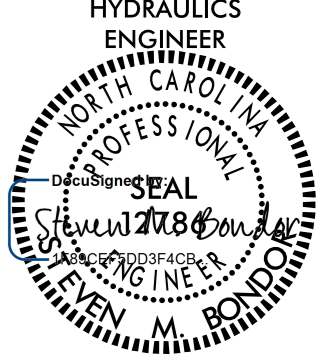
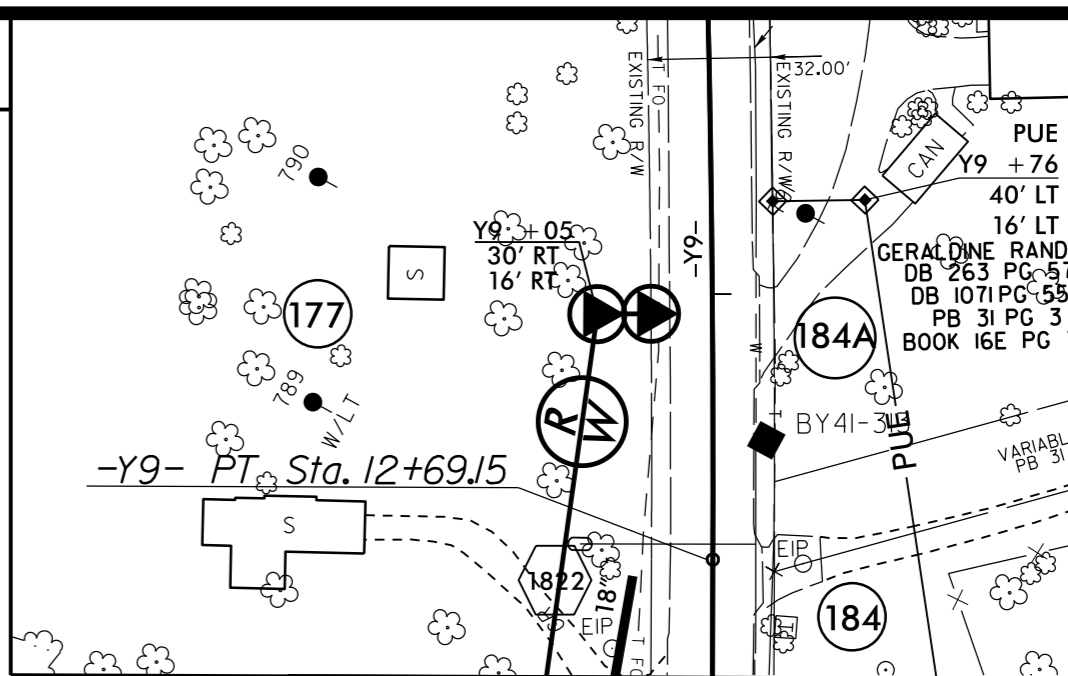
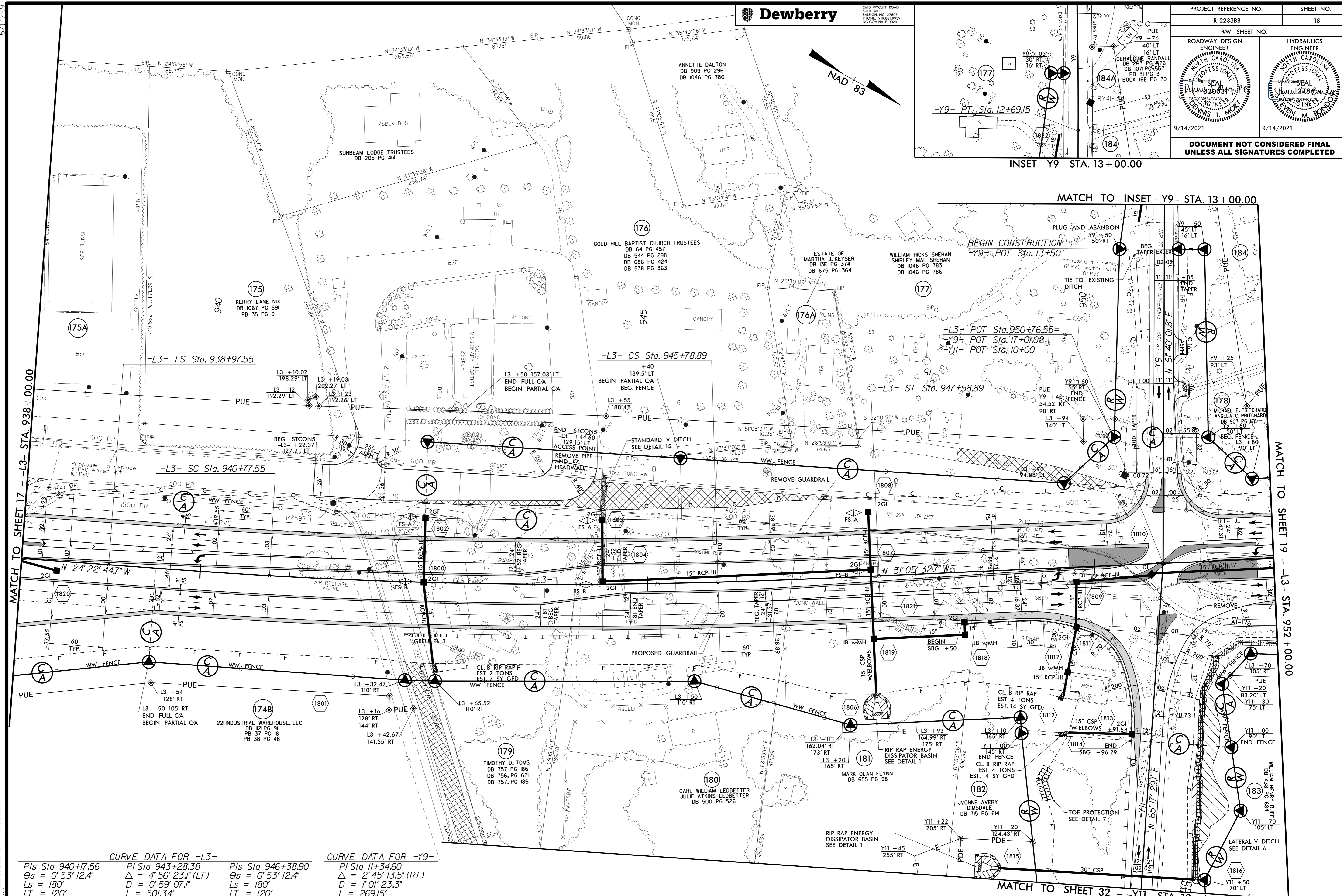


PROJECT REFERENCE NO. R-2233BB	SHEET NO. 18
RW SHEET NO.	
ROADWAY DESIGN ENGINEER	HYDRAULICS ENGINEER
	
9/14/2021	9/14/2021
DOCUMENT NOT CONSIDERED FINAL UNLESS ALL SIGNATURES COMPLETED	



INSET -Y9- STA. 13+00.00

MATCH TO INSET -Y9- STA. 13+00.00



MATCH TO SHEET 17 - L3- STA. 938+00.00

MATCH TO SHEET 19 - L3- STA. 952+00.00

MATCH TO SHEET 32 - -Y11- STA. 13+65.00

CURVE DATA FOR -L3-

Pls Sta 940+17.56	PI Sta 943+28.38	Pls Sta 946+38.90
Os = 0° 53' 12.4"	Δ = 4° 56' 23.1" (LT)	Os = 0° 53' 12.4"
Ls = 180'	L = 0° 59' 07.1"	Ls = 180'
LT = 120'	L = 501.34'	LT = 120'
ST = 60'	T = 250.83'	ST = 60'
	R = 5,815'	
	SE = .03	

CURVE DATA FOR -Y9-

PI Sta 11+34.60
Δ = 2° 45' 13.5" (RT)
D = 1° 01' 23.3"
L = 269.15'
T = 134.60'
R = 5,600'
SE = EX.

SEE SHEET 49 FOR -L3- PROFILE
 SEE SHEET 81 FOR -Y11- PROFILE
 SEE SHEET 83 FOR -Y9- PROFILE
 SEE SHEET 2B-6 FOR CONC. ISLAND DETAILS
 SEE SHEETS 2D-1 THRU 2D-9 FOR DRAINAGE DETAILS

9/13/2021 12:02:54 PM
LISTENING TO THE ROADWAY DESIGN ENGINEER - R.D.Y. - PSH18.DGN