

5/14/2021



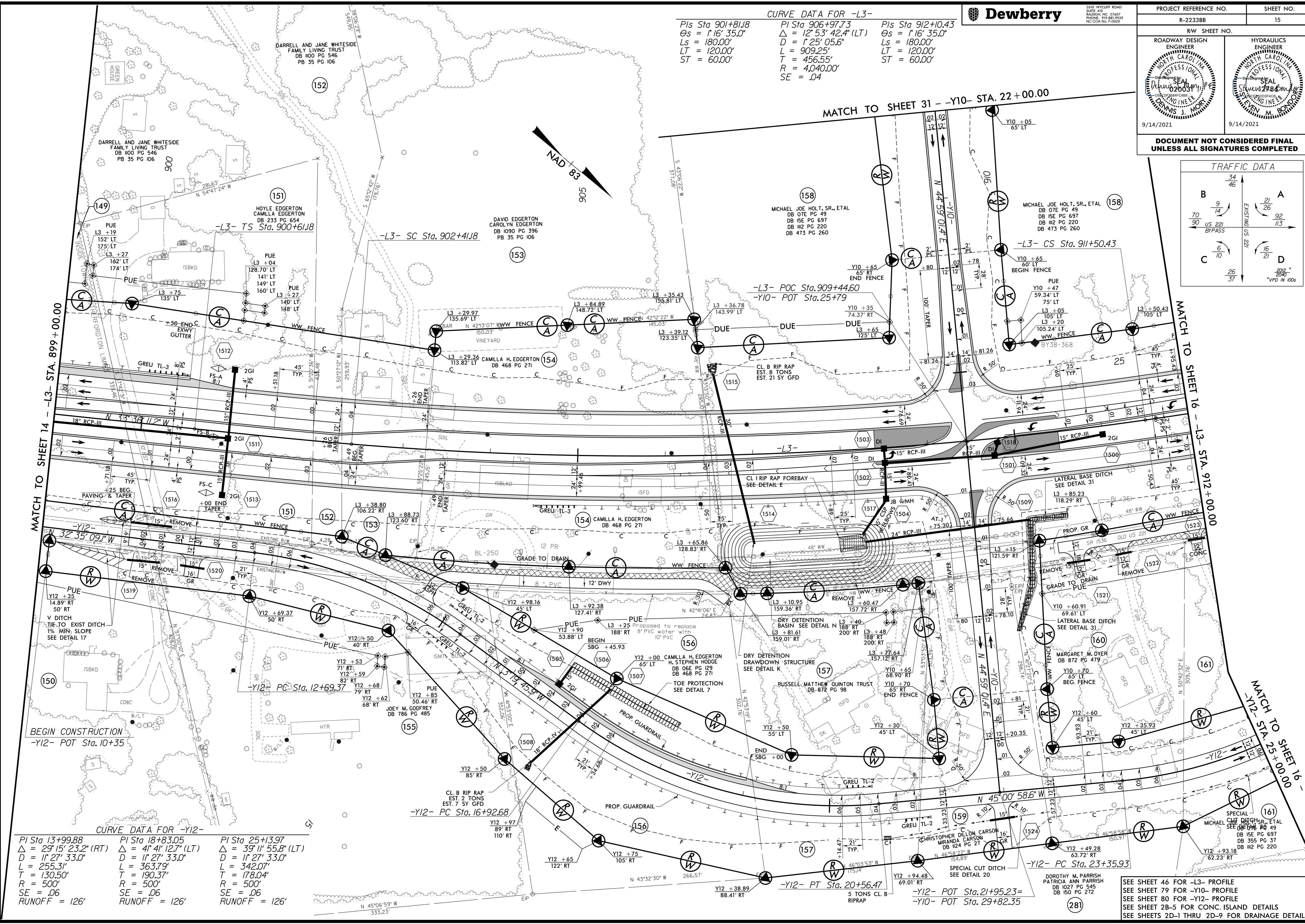
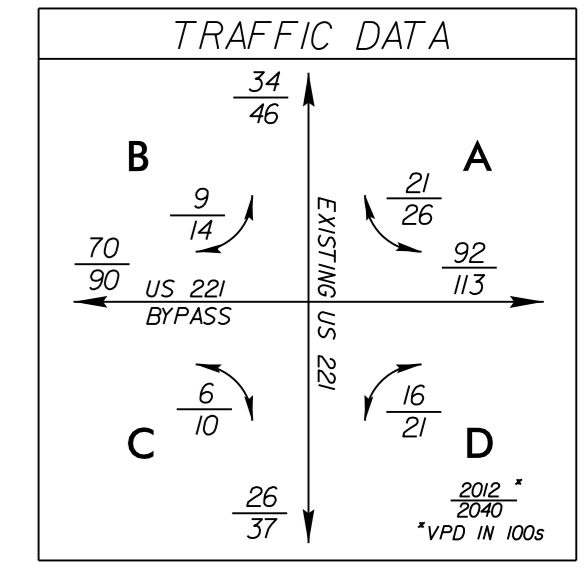
2410 WYCLIFF ROAD
SUITE 410
RALEIGH, NC 27607
PHONE: 919.883.9329
N.C. REG. NO. P-00229

PROJECT REFERENCE NO. R-2233BB		SHEET NO. 15	
RW SHEET NO.			
ROADWAY DESIGN ENGINEER 		HYDRAULICS ENGINEER 	
9/14/2021		9/14/2021	

DOCUMENT NOT CONSIDERED FINAL
UNLESS ALL SIGNATURES COMPLETED

CURVE DATA FOR -L3-

Pls Sta 901+81.8 Os = 1'16" 35.0" Ls = 180.00' LT = 120.00' ST = 60.00'	PI Sta 906+97.73 Δ = 12° 53' 42.4" (LT) D = 1'25" 05.6" L = 909.25' T = 456.55' R = 4040.00' SE = .04	Pls Sta 912+10.43 Os = 1'16" 35.0" Ls = 180.00' LT = 120.00' ST = 60.00'
---	---	--



CURVE DATA FOR -Y12-

PI Sta 13+99.88 Δ = 29° 15' 23.2" (RT) D = 11' 27" 33.0" L = 255.31' T = 130.50' R = 500' SE = .06 RUNOFF = 126'	PI Sta 18+83.05 Δ = 41° 41' 12.7" (LT) D = 11' 27" 33.0" L = 363.79' T = 190.37' R = 500' SE = .06 RUNOFF = 126'	PI Sta 25+13.97 Δ = 39° 11' 55.8" (LT) D = 11' 27" 33.0" L = 342.07' T = 178.04' R = 500' SE = .06 RUNOFF = 126'
---	---	---

SEE SHEET 46 FOR -L3- PROFILE
SEE SHEET 79 FOR -Y10- PROFILE
SEE SHEET 80 FOR -Y12- PROFILE
SEE SHEET 28-5 FOR CONC. ISLAND DETAILS
SEE SHEETS 2D-1 THRU 2D-9 FOR DRAINAGE DETAILS

9/13/2021 10:23:55 AM
LISTENING TO THE ROADWAY DESIGN ENGINEER
Dennis M. Mory