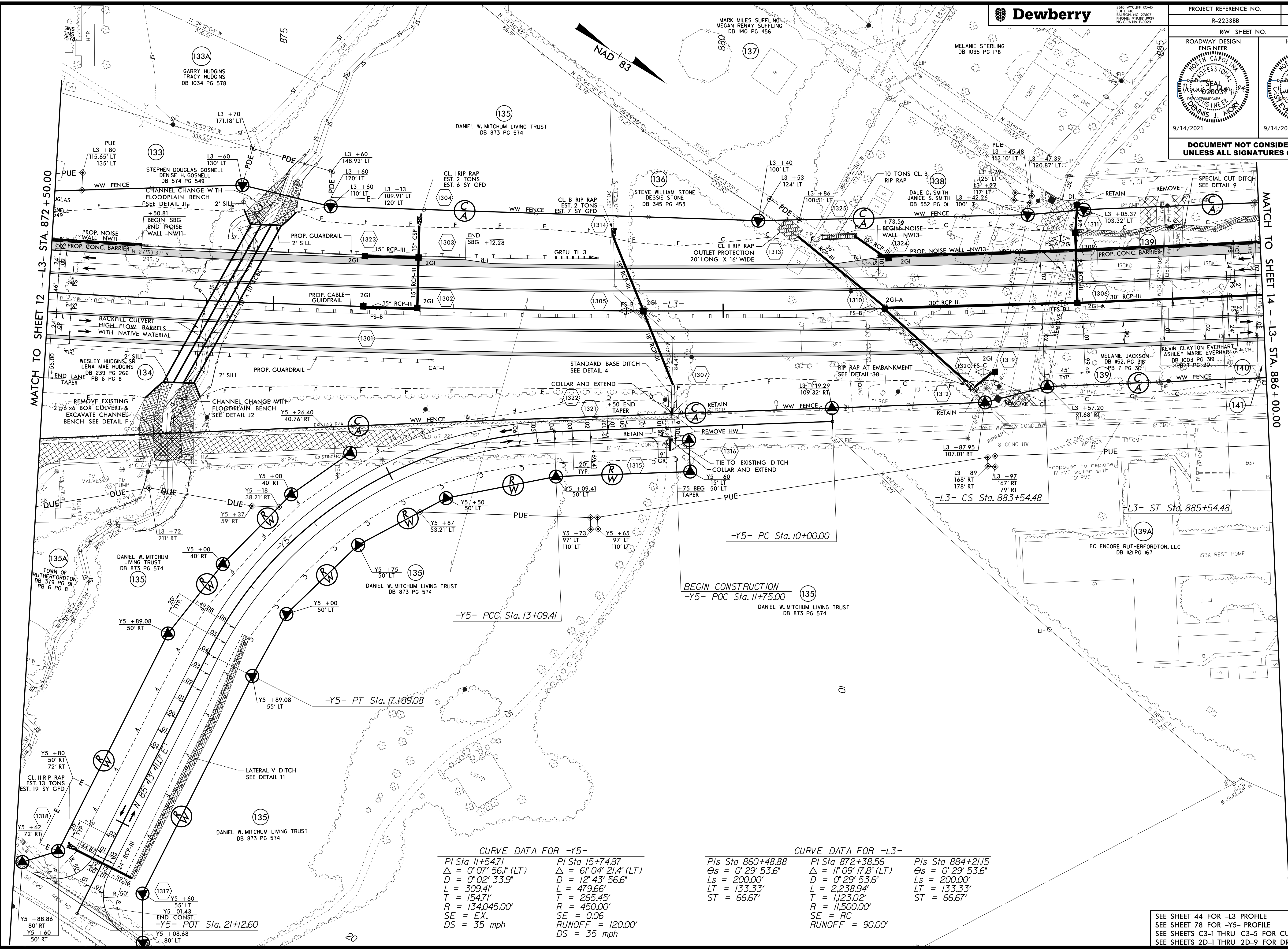




PROJECT REFERENCE NO. R-2233BB		SHEET NO. 13
RW SHEET NO.		
ROADWAY DESIGN ENGINEER	HYDRAULICS ENGINEER	
9/14/2021	9/14/2021	
DOCUMENT NOT CONSIDERED FINAL UNLESS ALL SIGNATURES COMPLETED		



CURVE DATA FOR -Y5-

PI Sta 11+54.71	PI Sta 15+74.87
$\Delta = 0^{\circ}07'56.1''$ (LT)	$\Delta = 6^{\circ}04'21.4''$ (LT)
D = 0'02'33.9"	D = 12'43'56.6"
L = 309.41'	L = 479.66'
T = 154.71'	T = 265.45'
R = 134,045.00'	R = 450.00'
SE = EX.	SE = 0.06
DS = 35 mph	RUNOFF = 120.00'
	DS = 35 mph

CURVE DATA FOR -L3-

PIs Sta 860+48.88	PI Sta 872+38.56	PIs Sta 884+21.5
$\Delta_s = 0^{\circ}29'53.6''$	$\Delta = 1^{\circ}09'17.8''$ (LT)	$\Delta_s = 0^{\circ}29'53.6''$
Ls = 200.00'	D = 0'29'53.6"	Ls = 200.00'
LT = 133.33'	L = 479.66'	LT = 133.33'
ST = 66.67'	T = 1123.02'	ST = 66.67'
	R = 11,500.00'	
	SE = RC	
	RUNOFF = 90.00'	

SEE SHEET 44 FOR -L3 PROFILE
 SEE SHEET 78 FOR -Y5- PROFILE
 SEE SHEETS C3-1 THRU C3-5 FOR CULVERT PLANS
 SEE SHEETS 2D-1 THRU 2D-9 FOR DRAINAGE DETAILS

9/13/2021 4:07:15 PM
 LISTENING TO THE ROADWAY DESIGN ENGINEER - PSH13.DGN