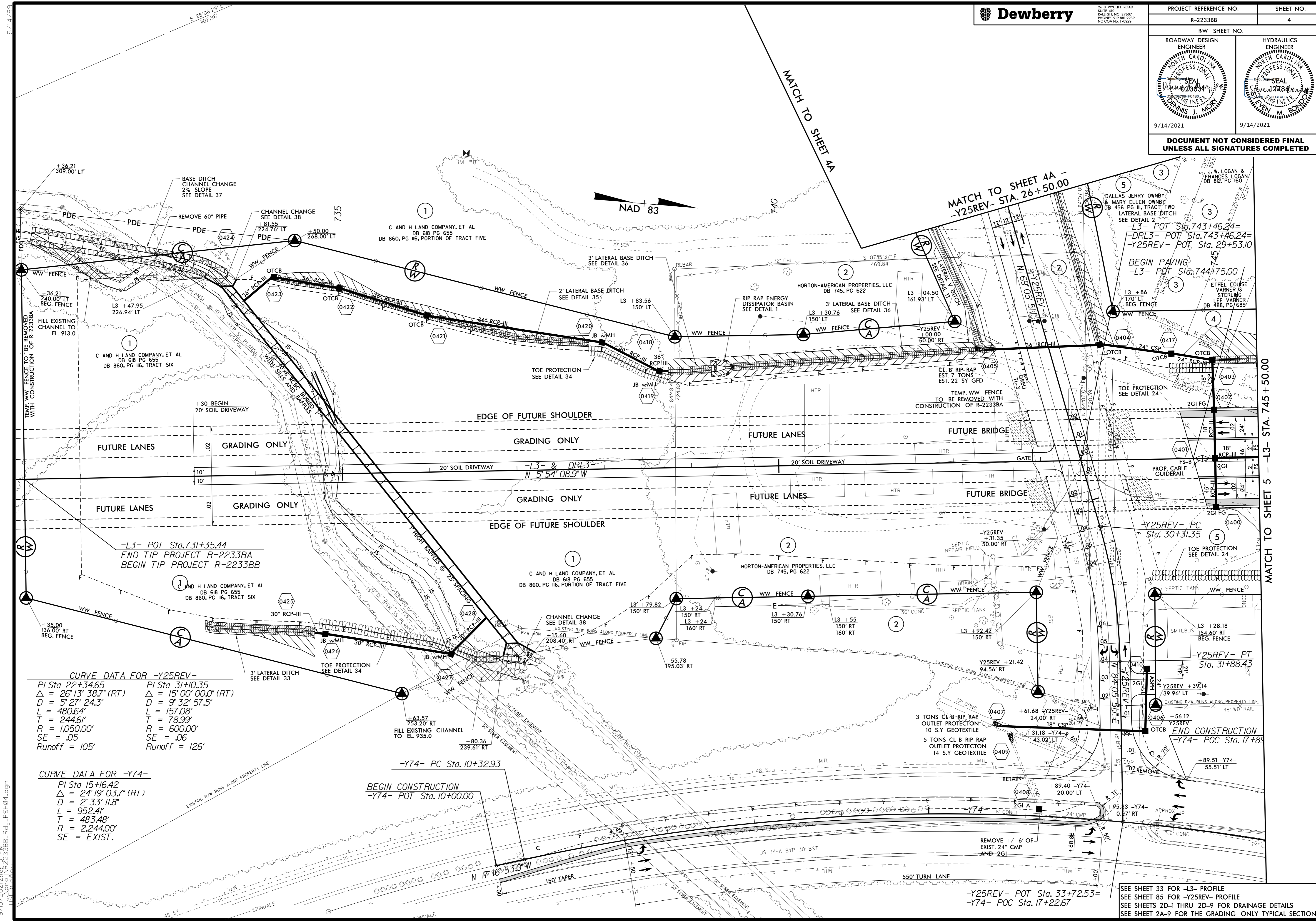




2610 WYCLIFF ROAD
SUITE 410
RALEIGH, NC 27607
PHONE: 919.883.9329
NC CCA No. F-0029

PROJECT REFERENCE NO. R-2233BB		SHEET NO. 4
R/W SHEET NO.		
ROADWAY DESIGN ENGINEER 	HYDRAULICS ENGINEER 	
9/14/2021	9/14/2021	
DOCUMENT NOT CONSIDERED FINAL UNLESS ALL SIGNATURES COMPLETED		



CURVE DATA FOR -Y25REV-

PI Sta 22+34.65	PI Sta 31+10.35
$\Delta = 26'13'' 38.7''$ (RT)	$\Delta = 15'00'' 00.0''$ (RT)
$D = 5'27'' 24.3''$	$D = 9'32'' 57.5''$
$L = 480.64'$	$L = 157.08'$
$T = 244.61'$	$T = 78.99'$
$R = 1,050.00'$	$R = 600.00'$
$SE = .05$	$SE = .06$
Runoff = 105'	Runoff = 126'

CURVE DATA FOR -Y74-

PI Sta 15+16.42
$\Delta = 24'19'' 03.7''$ (RT)
$D = 2'33'' 11.8''$
$L = 952.41'$
$T = 483.48'$
$R = 2,244.00'$
$SE = EXIST.$

BEGIN CONSTRUCTION
-Y74- POT Sta. 10+00.00

9/13/2021 2:16:45 PM
LST:R-2233BB-Rdy_PSH04.dgn

SEE SHEET 33 FOR -L3- PROFILE
SEE SHEET 85 FOR -Y25REV- PROFILE
SEE SHEETS 2D-1 THRU 2D-9 FOR DRAINAGE DETAILS
SEE SHEET 2A-9 FOR THE GRADING ONLY TYPICAL SECTION