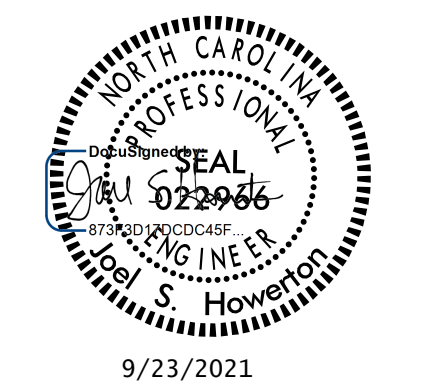
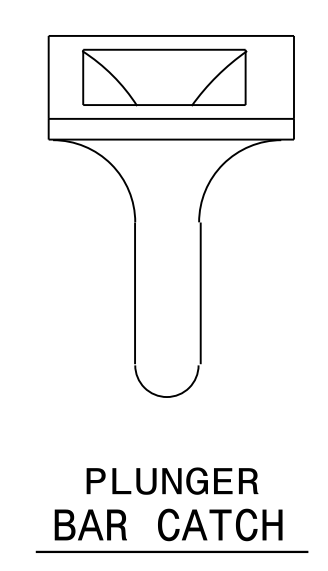
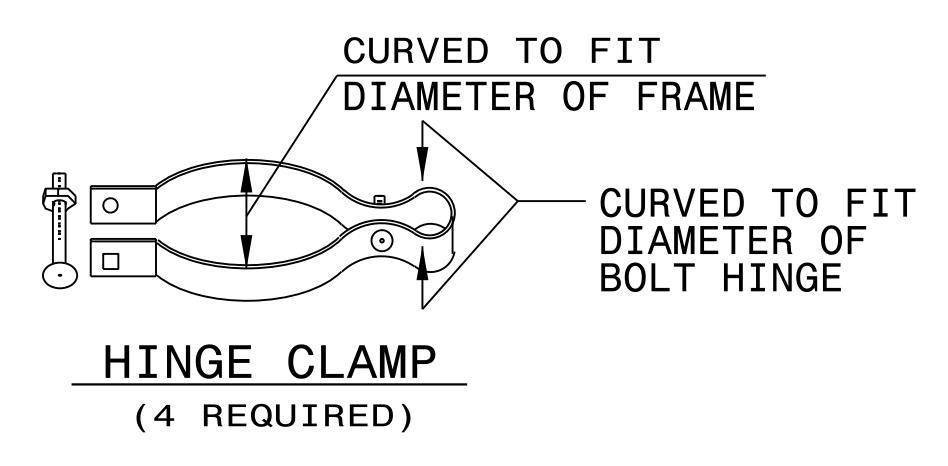
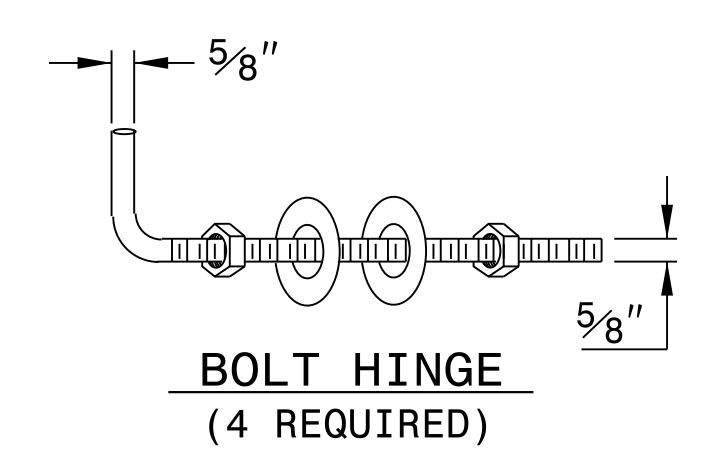


CONSTRUCT ACCORDING TO STANDARD DRAWING 866.02.
 USE LATCH DEVICE APPROVED BY THE ENGINEER. HINGE ASSEMBLY, AS DETAILED, IS SUGGESTED.
 SUBSTITUTION MAY BE MADE SUBJECT TO APPROVAL BY THE ENGINEER. USE 1 3/8\"/>



9/23/2021

DOCUMENT NOT CONSIDERED FINAL
UNLESS ALL SIGNATURES COMPLETED

**CONTRACTS STANDARDS
AND DEVELOPMENT UNIT**
 Office 919-707-6950 FAX 919-250-4119

**WOVEN WIRE FENCE
WITH DOUBLE GATE**

ORIGINAL BY: K. KEMPF DATE: 4-18-2013
 MODIFIED BY: DATE: _____
 CHECKED BY: DATE: _____
 FILE SPEC.: details\kkempf\english\8660201.dgn

05-NOV-2019 10:01
S:\Contracts\Special Details\kkempf\english\8660201.dgn
JHowerton AT CSD-292595