
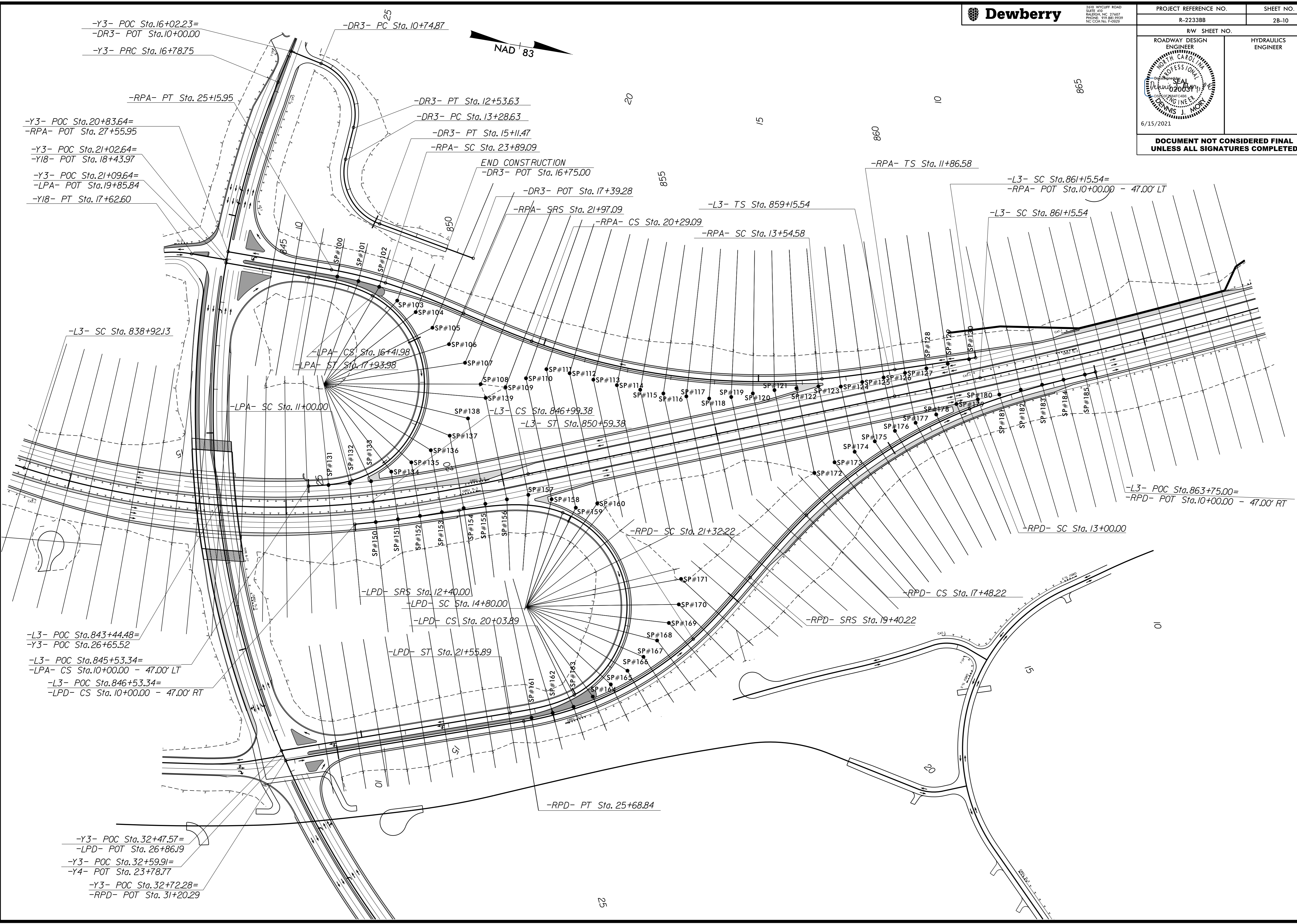


PROJECT REFERENCE NO. R-2233BB		SHEET NO. 2B-10
RW SHEET NO.		
ROADWAY DESIGN ENGINEER	HYDRAULICS ENGINEER	
 6/15/2021		
<b>DOCUMENT NOT CONSIDERED FINAL UNLESS ALL SIGNATURES COMPLETED</b>		



-Y3- POC Sta.16+02.23=  
 -DR3- POT Sta.10+00.00  
 -Y3- PRC Sta.16+78.75  
 -RPA- PT Sta.25+15.95  
 -Y3- POC Sta.20+83.64=  
 -RPA- POT Sta.27+55.95  
 -Y3- POC Sta.21+02.64=  
 -Y18- POT Sta.18+43.97  
 -Y3- POC Sta.21+09.64=  
 -LPA- POT Sta.19+85.84  
 -Y18- PT Sta.17+62.60

-DR3- PC Sta.10+74.87  
 -DR3- PT Sta.12+53.63  
 -DR3- PC Sta.13+28.63  
 -DR3- PT Sta.15+11.47  
 -RPA- SC Sta.23+89.09  
 END CONSTRUCTION  
 -DR3- POT Sta.16+75.00  
 -DR3- POT Sta.17+39.28  
 -RPA- SRS Sta.21+97.09  
 -RPA- CS Sta.20+29.09  
 -RPA- SC Sta.13+54.58

-L3- SC Sta.838+92.13  
 -LPA- CS Sta.16+41.98  
 -LPA- ST Sta.17+93.98  
 -LPA- SC Sta.11+00.00  
 -L3- POC Sta.843+44.48=  
 -Y3- POC Sta.26+65.52  
 -L3- POC Sta.845+53.34=  
 -LPA- CS Sta.10+00.00 - 47.00' LT  
 -L3- POC Sta.846+53.34=  
 -LPD- CS Sta.10+00.00 - 47.00' RT

-LPD- SRS Sta.12+40.00  
 -LPD- SC Sta.14+80.00  
 -LPD- CS Sta.20+03.89  
 -LPD- ST Sta.21+55.89

-Y3- POC Sta.32+47.57=  
 -LPD- POT Sta.26+86.19  
 -Y3- POC Sta.32+59.91=  
 -Y4- POT Sta.23+78.77  
 -Y3- POC Sta.32+72.28=  
 -RPD- POT Sta.31+20.29

-RPD- PT Sta.25+68.84

-RPA- TS Sta.11+86.58  
 -L3- SC Sta.861+15.54=  
 -RPA- POT Sta.10+00.00 - 47.00' LT  
 -L3- SC Sta.861+15.54  
 -L3- POC Sta.863+75.00=  
 -RPD- POT Sta.10+00.00 - 47.00' RT

-RPD- SC Sta.21+32.22  
 -RPD- CS Sta.17+48.22  
 -RPD- SRS Sta.19+40.22