
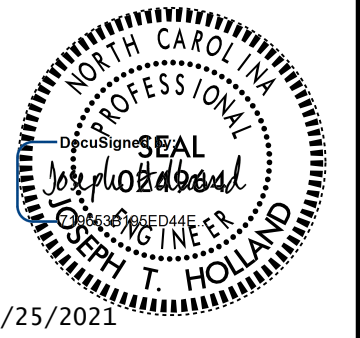

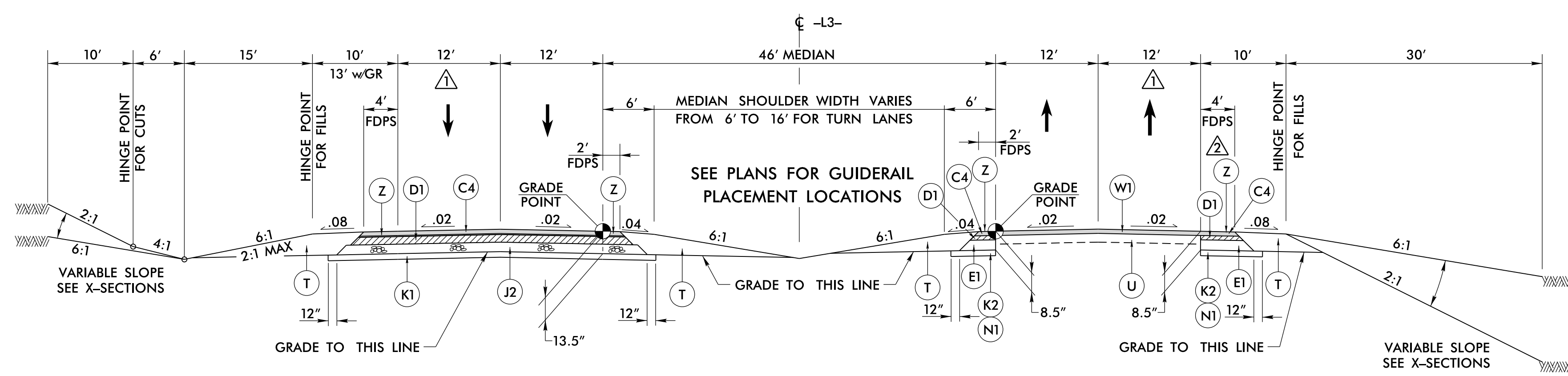


PAVEMENT SCHEDULE (FINAL)

ITEM	DESCRIPTION	ITEM	DESCRIPTION	ITEM	DESCRIPTION	ITEM	DESCRIPTION	ITEM	DESCRIPTION	ITEM	DESCRIPTION	ITEM	DESCRIPTION	ITEM	DESCRIPTION				
(A1)	7" CONCRETE	(C4)	3" S9.5C	(D3)	VAR DEPTH I19.0C	(E4)	5" B25.0C	(K1)	CHEMICAL STABILIZATION: 7" SOIL-CEMENT BASE OR 8" LIME-TREATED SOIL	(R1)	2'-6" CONCRETE CURB & GUTTER	(R5)	8"x12" CONCRETE CURB	(U)	EXIST. PAVEMENT				
(C1)	1.5" S9.5B	(C5)	VAR DEPTH S9.5C	(E1)	3" B25.0C	(E5)	VAR DEPTH B25.0C	(K2)	8" CLASS IV SUBGRADE STABILIZATION	(R2)	SHOULDER BERM GUTTER	(R6)	CONCRETE EXPRESSWAY GUTTER	(Z)	MILLED RUMBLE STRIP				
(C2)	3" S9.5B	(D1)	2.5" I19.0C	(E2)	4" B25.0C	(J1)	6" ABC	(N1)	GEOTEXTILE FOR SOIL STABILIZATION	(R3)	5" CONC. ISLAND	(S)	4" CONC. SIDEWALK	(V1)	(V2)	(V3)	(V4)	PAVEMENT MILLING	
(C3)	VAR DEPTH S9.5B	(D2)	4" I19.0C	(E3)	4.5" B25.0C	(J2)	8" ABC	(N2)	GEOTEXTILE FOR PAVEMENT STABILIZATION	(P)	PRIME COAT	(R4)	2' MODIFIED VALLEY GUTTER	(T)	EARTH	(W1)	(W2)	(W3)	VARIABLE DEPTH PAVEMENT WEDGING

PROJECT REFERENCE NO. R-2233BB	SHEET NO. 2A-3
ROADWAY DESIGN ENGINEER 	PAVEMENT DESIGN ENGINEER 
DOCUMENT NOT CONSIDERED FINAL UNLESS ALL SIGNATURES COMPLETED	
	
2410 WYCLIFF ROAD SUITE 410 RALEIGH, NC 27607 PHONE: 919.881.9939 NC CCA No. F-0929 NC DEPARTMENT OF TRANSPORTATION PAVEMENT MANAGEMENT UNIT 1593 MAIL SERVICE CENTER RALEIGH, NC 27699-1393	



▲ PAVEMENT WIDTH VARIES FROM 12' TO 30' FOR SUPERSTREET BULB-OUTS. ▲ PAVEMENT WIDENING WIDTH VARIES FROM 4' TO 22' FOR SUPERSTREET BULB-OUTS.

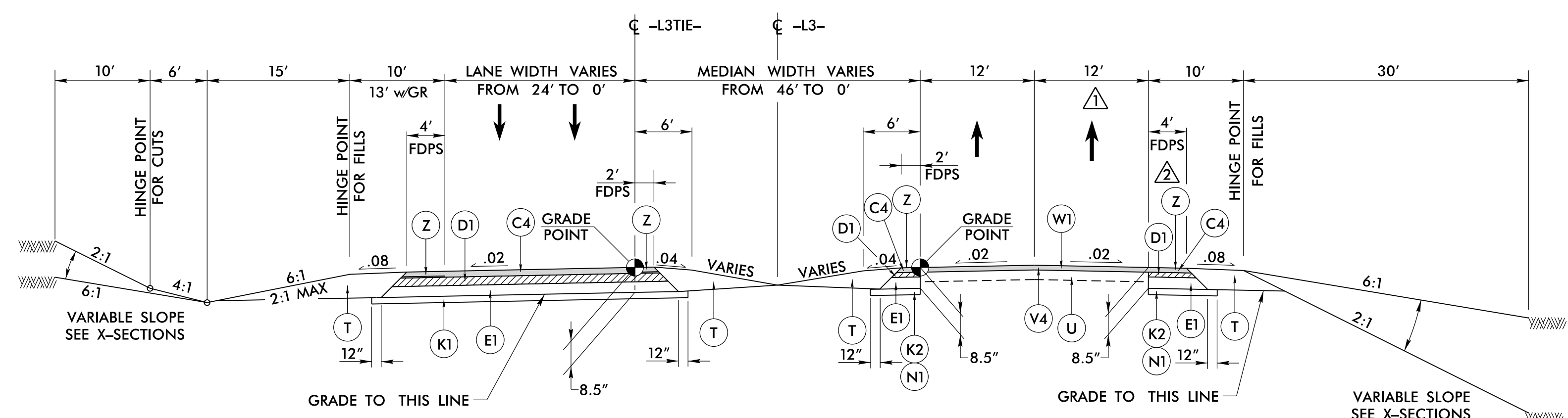
TYPICAL SECTION NO. 5

SOUTHBOUND LANES

-L3- 948+00.00 TO -L3- 952+00.00
(PAVEMENT WEDGING FROM 0' TO 24')
-L3- 952+00.00 TO -L3- 996+27.26
(FULL DEPTH PAVEMENT)

NORTHBOUND LANES

-L3- 955+00.00 TO -L3- 996+27.26



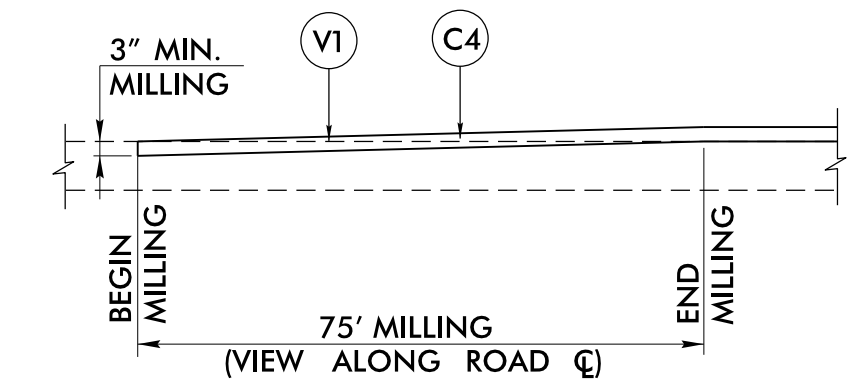
TYPICAL SECTION NO. 5A

SOUTHBOUND LANES

-L3TIE- 10+00.00 TO -L3TIE- 17+29.95

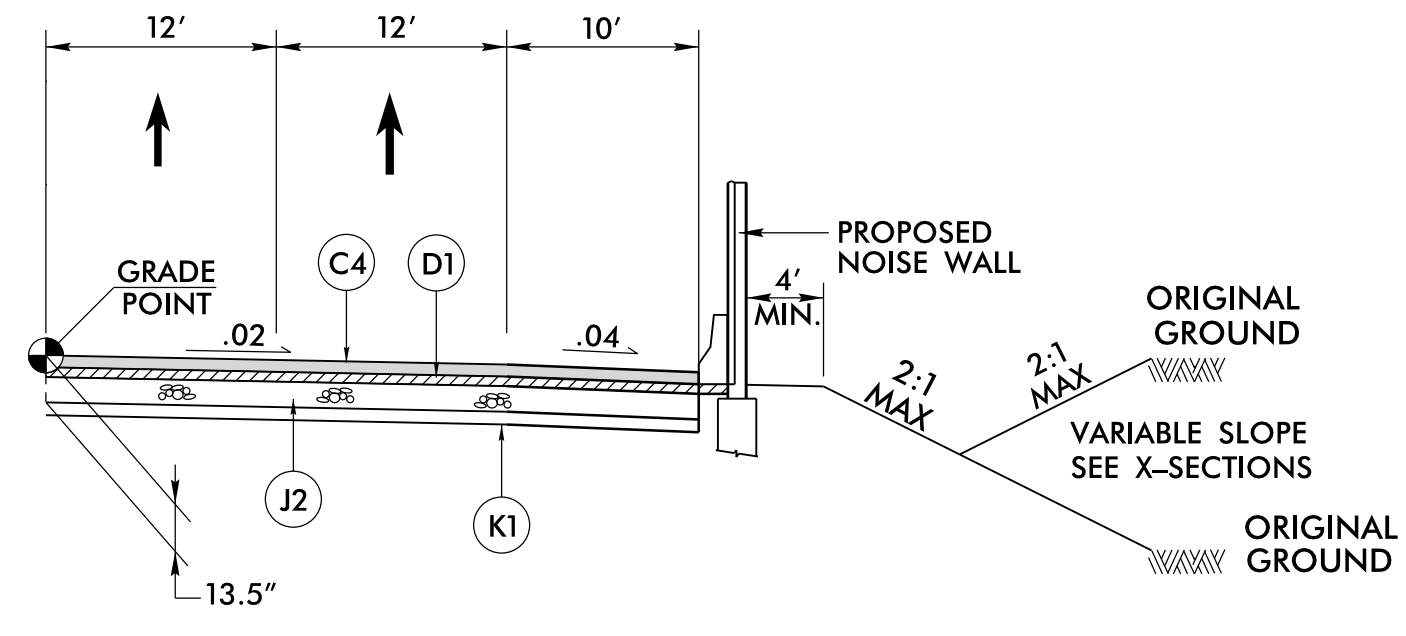
NORTHBOUND LANES

-L3- 996+27.26 TO -L3- 1004+00.00



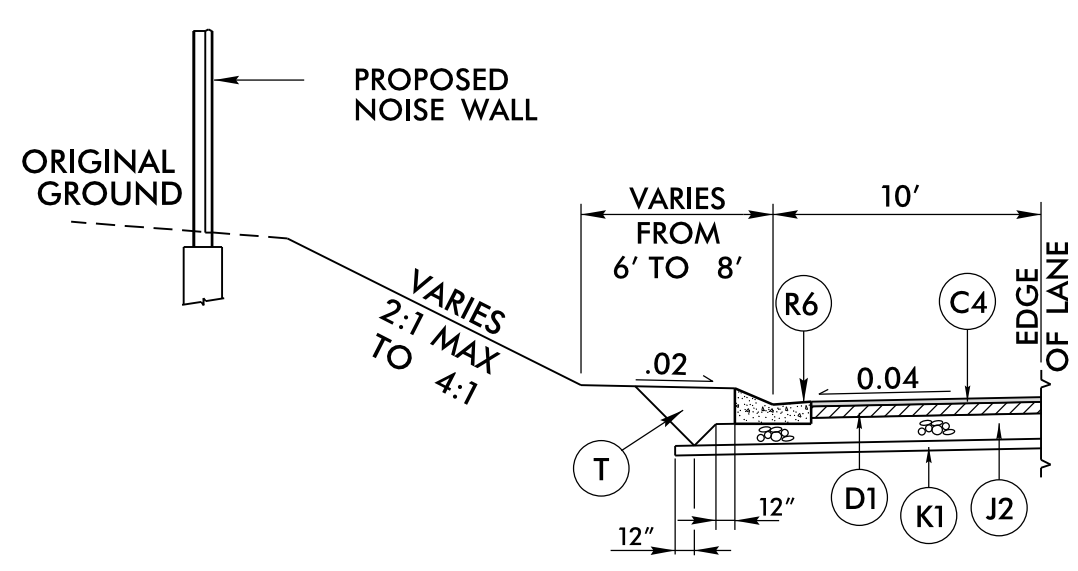
INCIDENTAL MILLING DETAIL - V1

USE IN CONJUNCTION WITH TYPICAL SECTION No. 5A
-L3- 1003+25.00 TO -L3- 1004+00.00



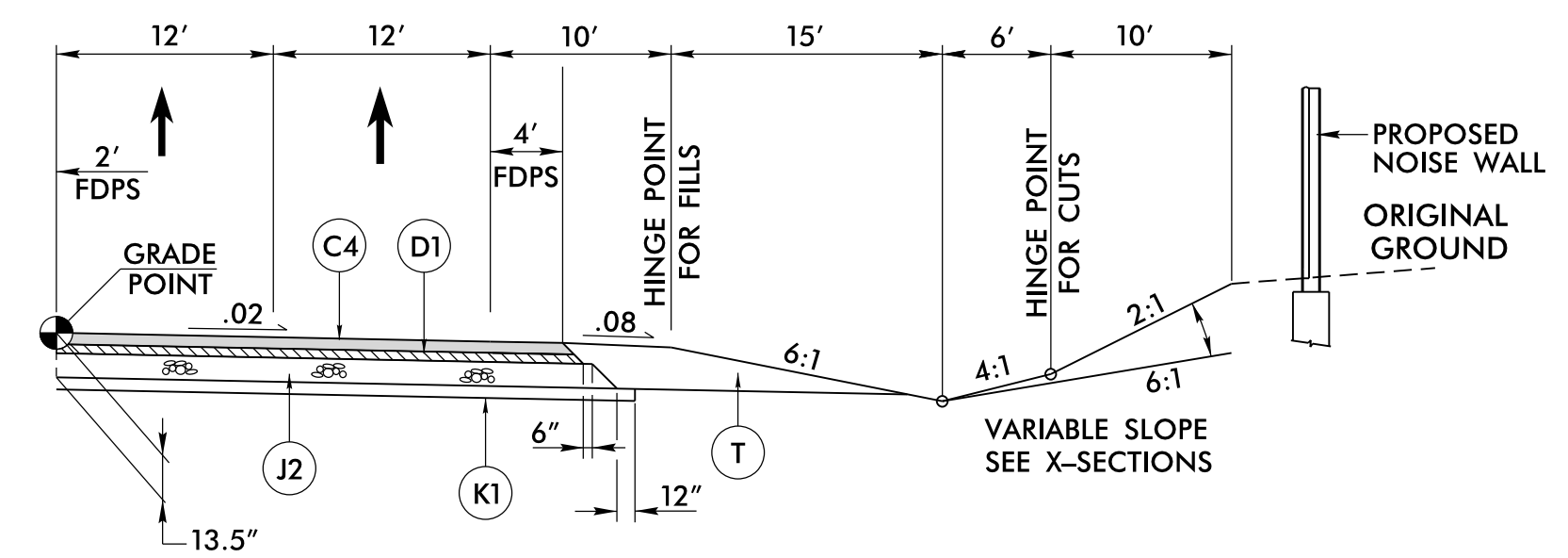
DETAIL NO. 1 FOR NOISE WALLS

USE IN CONJUNCTION WITH -L3- TYPICAL SECTION No.1



DETAIL NO. 2 FOR NOISE WALLS

USE IN CONJUNCTION WITH -L3- TYPICAL SECTION No.1



DETAIL NO. 3 FOR NOISE WALLS

USE IN CONJUNCTION WITH -L3- TYPICAL SECTION No.1

6/2/2019

8/10/2019 3:40 PM
R:\2233\338E_R0Y_TYP_2A-3.DGN
11:55:40 AM