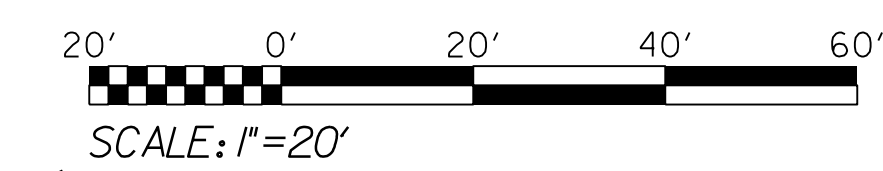


5/14/99  
12/16/2002  
U-5888.ut\_rdy5\_UC5\_psh.dgn



PROJECT REFERENCE NO. U-5888	SHEET NO. UC-5
DESIGNED BY: SS	12/16/2001
DRAWN BY: SS	
CHECKED BY: MVZ	
APPROVED BY: MVZ	NORTH CAROLINA DEPARTMENT OF TRANSPORTATION
REVISED:	UTILITIES ENGINEERING SEC. PHONE: (919) 707-6690 FAX: (919) 250-4151

**FINAL DESIGN**  
RELEASE  
FOR CONSTRUCTION

**UTILITY CONSTRUCTION**

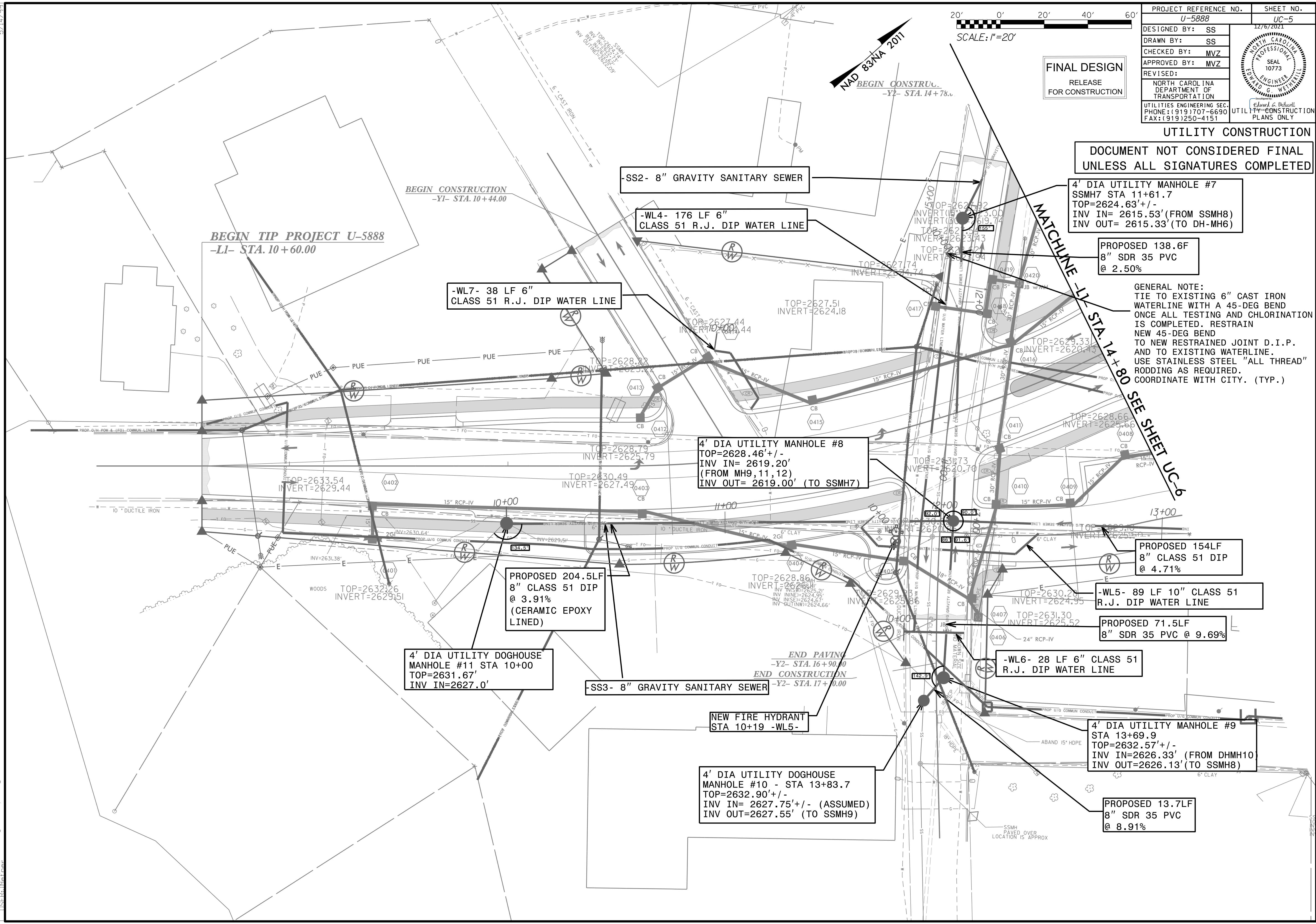
**DOCUMENT NOT CONSIDERED FINAL  
UNLESS ALL SIGNATURES COMPLETED**

**4' DIA UTILITY MANHOLE #7**  
SSMH7 STA 11+61.7  
TOP=2624.63' +/-  
INV IN= 2615.53' (FROM SSMH8)  
INV OUT= 2615.33' (TO DH-MH6)

**PROPOSED 138.6F**  
8" SDR 35 PVC  
@ 2.50%

**GENERAL NOTE:**  
TIE TO EXISTING 6" CAST IRON  
WATERLINE WITH A 45-DEG BEND  
ONCE ALL TESTING AND CHLORINATION  
IS COMPLETED. RESTRAIN  
NEW 45-DEG BEND  
TO NEW RESTRAINED JOINT D.I.P.  
AND TO EXISTING WATERLINE.  
USE STAINLESS STEEL "ALL THREAD"  
RODDING AS REQUIRED.  
COORDINATE WITH CITY. (TYP.)

**MATCHLINE -L1- STA. 14+80**  
**SEE SHEET UC-6**



**BEGIN CONSTRUCTION**  
-Y1- STA. 10+44.00

**BEGIN TIP PROJECT U-5888**  
-L1- STA. 10+60.00

**-WL7- 38 LF 6" CLASS 51 R.J. DIP WATER LINE**

**-SS2- 8" GRAVITY SANITARY SEWER**

**-WL4- 176 LF 6" CLASS 51 R.J. DIP WATER LINE**

**4' DIA UTILITY MANHOLE #8**  
TOP=2628.46' +/-  
INV IN= 2619.20'  
(FROM MH9, 11, 12)  
INV OUT= 2619.00' (TO SSMH7)

**PROPOSED 204.5LF**  
8" CLASS 51 DIP  
@ 3.91%  
(CERAMIC EPOXY  
LINED)

**4' DIA UTILITY DOGHOUSE  
MANHOLE #11 STA 10+00**  
TOP=2631.67'  
INV IN=2627.0'

**-SS3- 8" GRAVITY SANITARY SEWER**

**NEW FIRE HYDRANT  
STA 10+19 -WL5-**

**4' DIA UTILITY DOGHOUSE  
MANHOLE #10 - STA 13+83.7**  
TOP=2632.90' +/-  
INV IN= 2627.75' +/- (ASSUMED)  
INV OUT=2627.55' (TO SSMH9)

**-WL6- 28 LF 6" CLASS 51  
R.J. DIP WATER LINE**

**PROPOSED 71.5LF**  
8" SDR 35 PVC @ 9.69%

**-WL5- 89 LF 10" CLASS 51  
R.J. DIP WATER LINE**

**PROPOSED 154LF**  
8" CLASS 51 DIP  
@ 4.71%

**4' DIA UTILITY MANHOLE #9**  
STA 13+69.9  
TOP=2632.57' +/-  
INV IN=2626.33' (FROM DHMH10)  
INV OUT=2626.13' (TO SSMH8)

**PROPOSED 13.7LF**  
8" SDR 35 PVC  
@ 8.91%

**END PAVING**  
-Y2- STA. 16+90.00  
**END CONSTRUCTION**  
-Y2- STA. 17+00.00