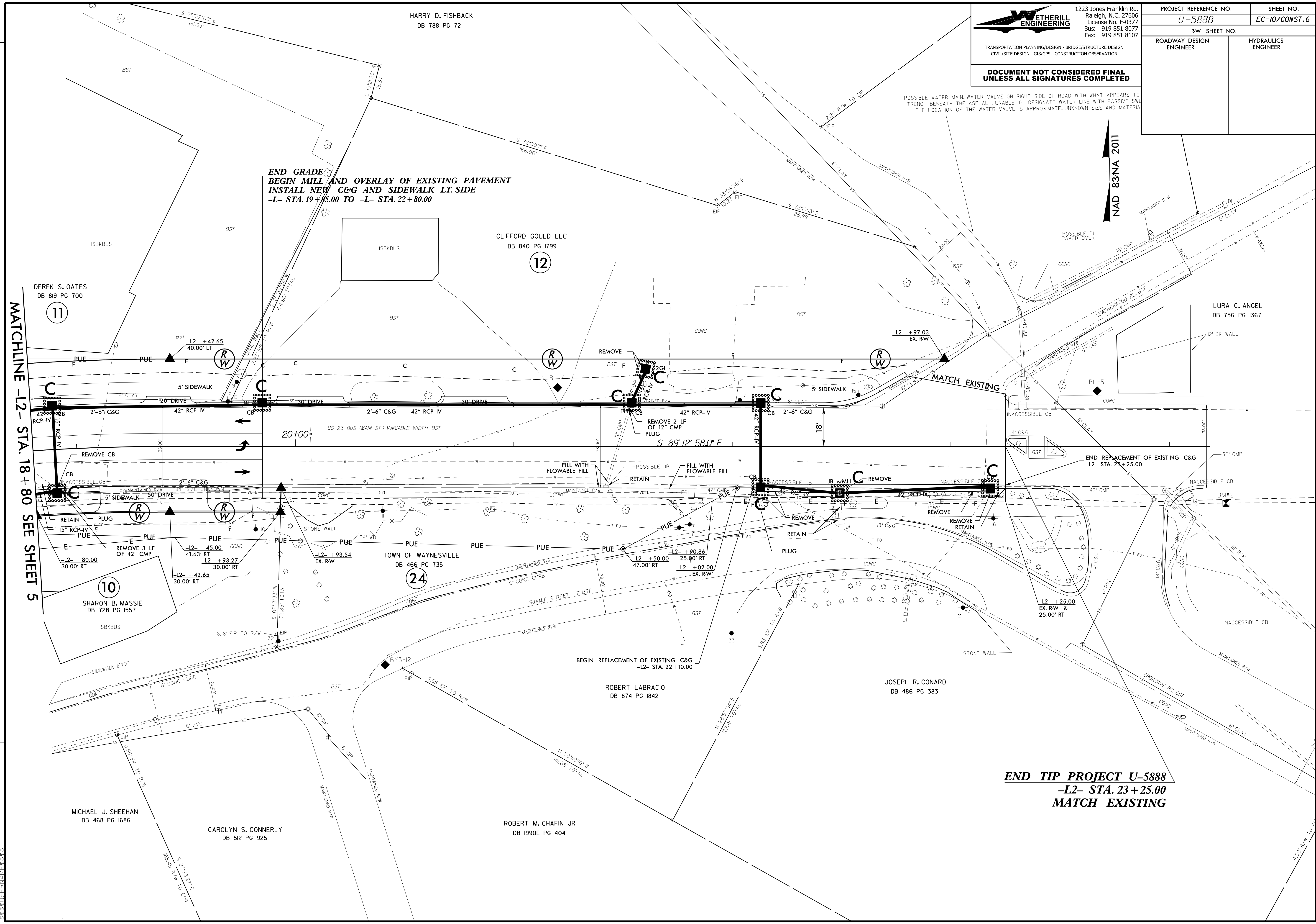


ETHERILL ENGINEERING
 1223 Jones Franklin Rd.
 Raleigh, N.C. 27606
 License No. F-0377
 Bus: 919 851 8077
 Fax: 919 851 8107

TRANSPORTATION PLANNING/DESIGN - BRIDGE/STRUCTURE DESIGN
 CIVIL/SITE DESIGN - GIS/GPS - CONSTRUCTION OBSERVATION

**DOCUMENT NOT CONSIDERED FINAL
 UNLESS ALL SIGNATURES COMPLETED**

PROJECT REFERENCE NO. U-5888		SHEET NO. EC-10/CONST.6
RW SHEET NO.		
ROADWAY DESIGN ENGINEER	HYDRAULICS ENGINEER	



REVISIONS

MATCHLINE -L- STA. 18 + 80 SEE SHEET 5

END GRADE
BEGIN MILL AND OVERLAY OF EXISTING PAVEMENT
INSTALL NEW C&G AND SIDEWALK LT. SIDE
-L- STA. 19+85.00 TO -L- STA. 22+80.00

END TIP PROJECT U-5888
-L- STA. 23 + 25.00
MATCH EXISTING

NAD 83/NA 2011

POSSIBLE WATER MAIN WATER VALVE ON RIGHT SIDE OF ROAD WITH WHAT APPEARS TO BE TRENCH BENEATH THE ASPHALT. UNABLE TO DESIGNATE WATER LINE WITH PASSIVE SWG. THE LOCATION OF THE WATER VALVE IS APPROXIMATE, UNKNOWN SIZE AND MATERIAL.

1
2
3
4
5
6
7
8
9
10
11
12
13
14
15
16
17
18
19
20
21
22
23
24
25
26
27
28
29
30
31
32
33
34
35
36
37
38
39
40
41
42
43
44
45
46
47
48
49
50
51
52
53
54
55
56
57
58
59
60
61
62
63
64
65
66
67
68
69
70
71
72
73
74
75
76
77
78
79
80
81
82
83
84
85
86
87
88
89
90
91
92
93
94
95
96
97
98
99
100