



I, Anthony K. Alford, a Professional Land Surveyor in the state of North Carolina hereby certify to the best of my knowledge and belief that the following work item(s) (R/W Staking) performed under my responsible charge meet NCDOT Survey Standards as directed in the NCDOT Location & Surveys guidelines and procedures.

I further certify that the right of way and permanent easement points shown herein and outlined in the tables shown hereon (localized coordinates, station/offset) have been checked and are accurate representations of the right of way and permanent easement points depicted on the corresponding highway plans. I also certify that the right of way and permanent easement points shown herein have been field monumented under my supervision from existing survey control provided by others; that the depicted property data shown herein were surveyed by others; and these monuments denote the right of way and easement boundaries at the time of staking which may be subject to change due to right of way revisions (See deeds for final determination).

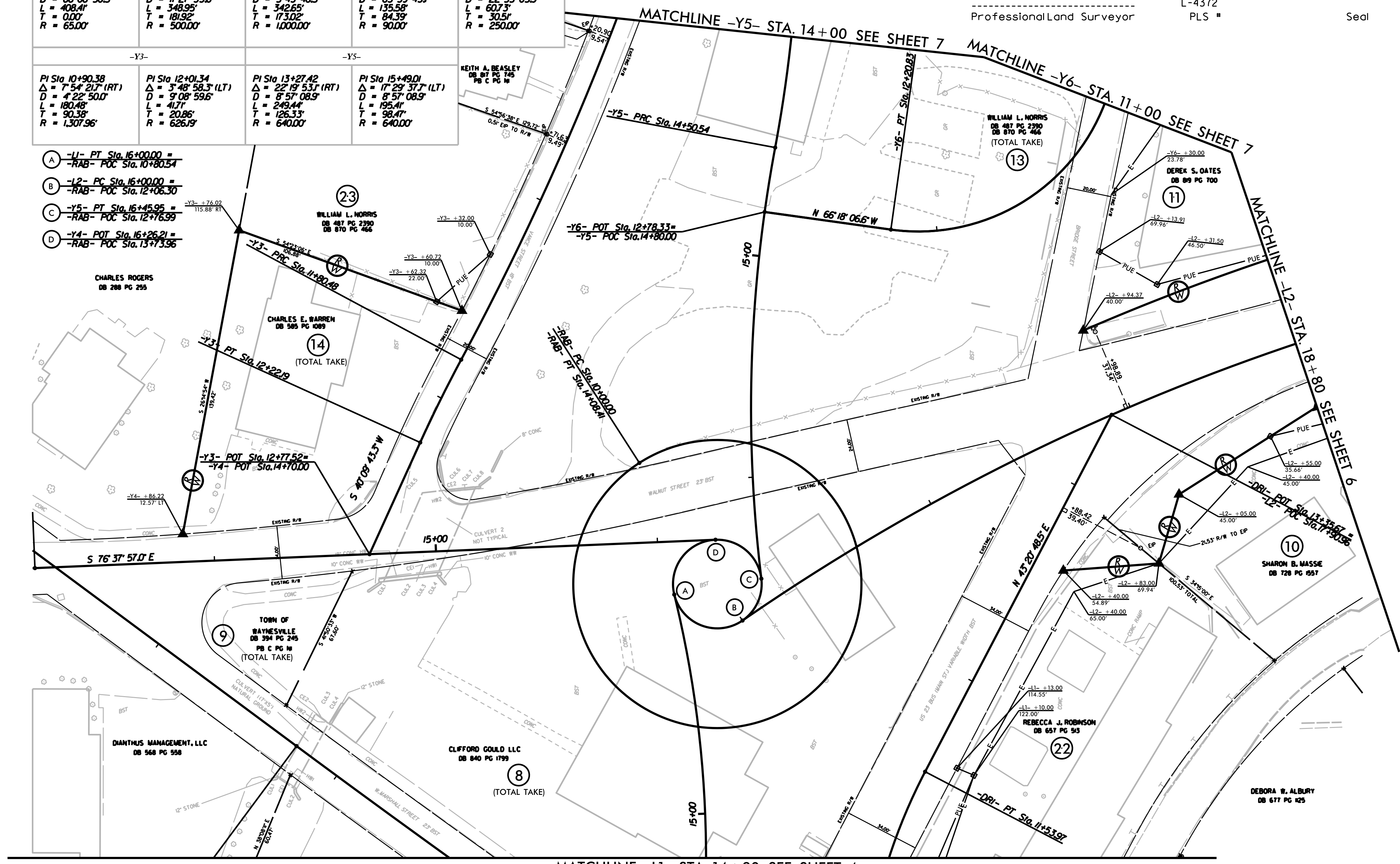
Witness my original signature, registration number and seal this 2nd day of October, 2018.

DocuSigned by:
Anthony K. Alford
228A2982F5844E...

Professional Land Surveyor L-4372
PLS # Seal

-RAB-	-L1-	-L2-	-Y6-	-DRI-
PI Sta 10+00.00 Δ = 360° 00' 00.0" (LT) D = 88° 08' 50.5" L = 408.41' T = 0.00' R = 65.00'	PI Sta 14+32.97 Δ = 39° 59' 11.5" (LT) D = 17° 27' 33.0" L = 348.95' T = 181.92' R = 500.00'	PI Sta 17+73.02 Δ = 19° 37' 56.5" (RT) D = 5° 43' 46.5" L = 342.65' T = 173.02' R = 1000.00'	PI Sta 11+69.64 Δ = 86° 18' 51.6" (RT) D = 63° 39' 43.1" L = 135.58' T = 84.39' R = 90.00'	PI Sta 11+23.76 Δ = 13° 55' 02.5" (RT) D = 22° 55' 05.9" L = 607.3' T = 305.1' R = 250.00'
-Y3-	-Y5-	KEITH A. BEASLEY DB 87 PG 745 PB C PG 14		
PI Sta 10+90.38 Δ = 7° 54' 21.7" (RT) D = 4° 22' 50.0" L = 180.48' T = 90.38' R = 1,307.96'	PI Sta 12+01.34 Δ = 3° 48' 58.3" (LT) D = 9° 08' 59.6" L = 41.71' T = 20.86' R = 626.19'	PI Sta 13+27.42 Δ = 22° 19' 53.1" (RT) D = 8° 57' 08.9" L = 249.44' T = 126.33' R = 640.00'	PI Sta 15+49.01 Δ = 17° 29' 37.7" (LT) D = 8° 57' 08.9" L = 195.41' T = 98.47' R = 640.00'	

- (A) -Y1- PT Sta. 16+00.00 =
-RAB- POC Sta. 10+80.54
- (B) -Y2- PC Sta. 16+00.00 =
-RAB- POC Sta. 12+06.30
- (C) -Y5- PT Sta. 16+45.95 =
-RAB- POC Sta. 12+16.99
- (D) -Y4- POT Sta. 16+26.21 =
-RAB- POC Sta. 13+13.96



MATCHLINE -L1- STA. 14+80 SEE SHEET 4

NOTES:

- IF FURTHER INFORMATION REGARDING PROJECT CONTROL IS NEEDED, PLEASE CONTACT THE LOCATION AND SURVEYS UNIT.
- PROJECT CONTROL WAS ESTABLISHED USING GNSS, THE GLOBAL NAVIGATION SATELLITE SYSTEM.

REVISIONS

18-0617-2018-017 Location and Surveys\U-5888 RW Staking 18201.30\80-Drawings\FOR REVIEW\Revised\101818\U5888-Ls-rw05.dgn