

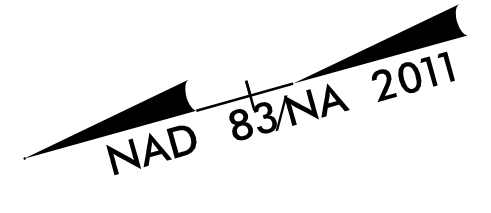
-Y5-		-Y6-	
PI Sta 10+23.34	PI Sta 11+24.13	PI Sta 13+27.42	PI Sta 11+69.64
$\Delta = 0^{\circ} 58' 56.1''$ (LT)	$\Delta = 1^{\circ} 03' 33.9''$ (LT)	$\Delta = 22^{\circ} 19' 53.1''$ (RT)	$\Delta = 86^{\circ} 18' 51.6''$ (RT)
D = 2' 06" 15.9"	D = 7' 09" 43.1"	D = 8' 57" 08.9"	D = 63' 39" 43.1"
L = 46.68'	L = 154.42'	L = 249.44'	L = 135.58'
T = 23.34'	T = 77.45'	T = 126.33'	T = 84.39'
R = 2,722.64'	R = 800.00'	R = 640.00'	R = 90.00'

**WETHERILL ENGINEERING**  
 1223 Jones Franklin Rd.  
 Raleigh, N.C. 27606  
 License No. F-0377  
 Bus: 919 851 8077  
 Fax: 919 851 8107

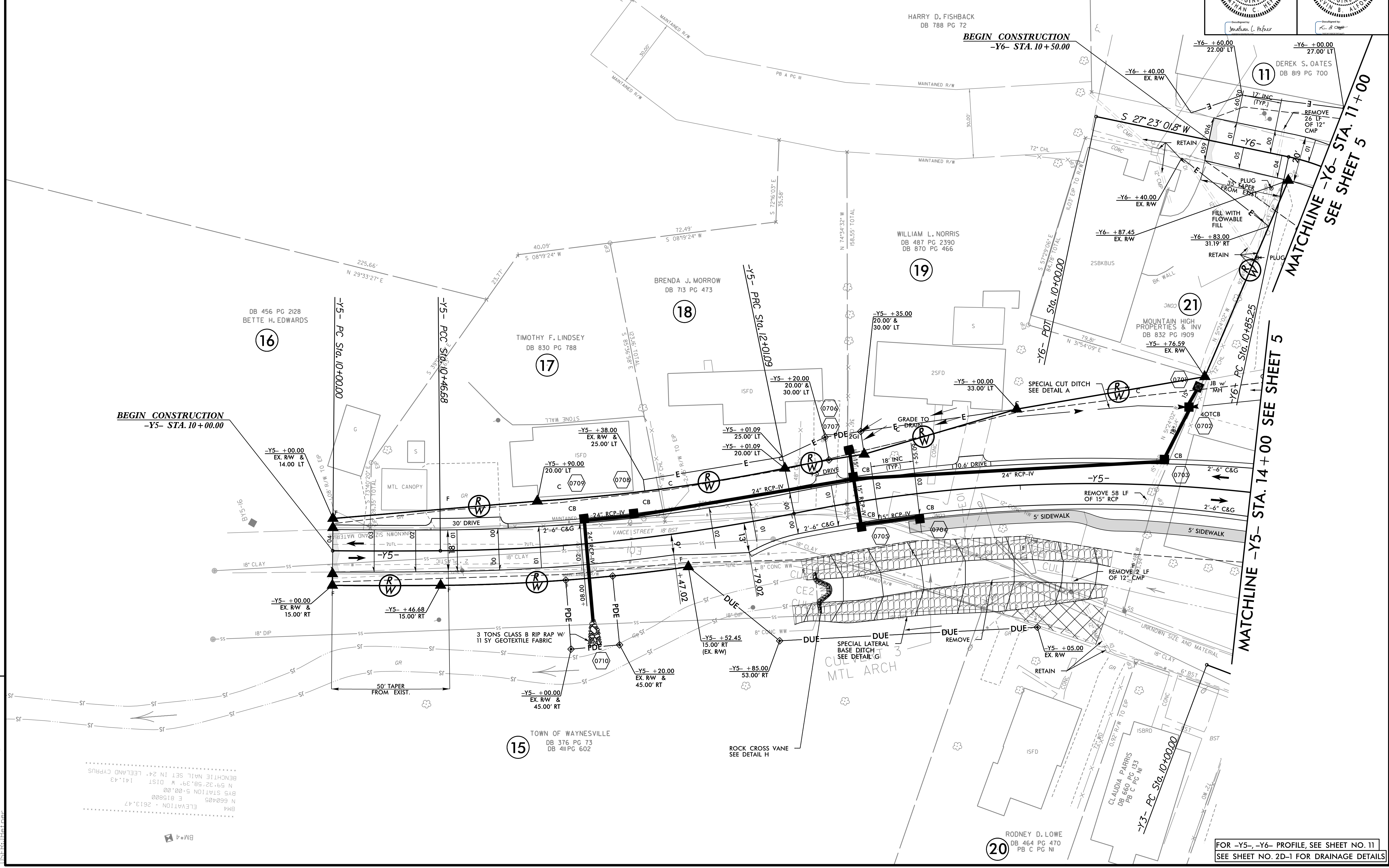
TRANSPORTATION PLANNING/DESIGN - BRIDGE/STRUCTURE DESIGN  
 CIVIL/SITE DESIGN - GIS/GPS - CONSTRUCTION OBSERVATION

**DOCUMENT NOT CONSIDERED FINAL  
 UNLESS ALL SIGNATURES COMPLETED**

PROJECT REFERENCE NO. <b>U-5888</b>	SHEET NO. <b>7</b>
RW SHEET NO. 9/30/2021	HYDRAULICS ENGINEER 9/30/2021
ROADWAY DESIGN ENGINEER SEAL 35016 KEVIN S. ALFORD	HYDRAULICS ENGINEER SEAL 31977 DEREK S. OATES



REVISIONS



9/28/2021 5888\_rdu\_psh\_07.dgn  
 I:\Projects\5888\Drawings\Sheet\5888-07.dgn

BENCH MARK SET IN 24' LEELAND CYPRESS  
 N 59° 32' 58.39" W DIST 141.43  
 BMS STATION 5+00.00  
 E 815800  
 ELEVATION = 2613.47  
 BM4

FOR -Y5-, -Y6- PROFILE, SEE SHEET NO. 11  
 SEE SHEET NO. 2D-1 FOR DRAINAGE DETAILS