

**WETHERILL ENGINEERING**  
 1223 Jones Franklin Rd.  
 Raleigh, N.C. 27606  
 License No. F-0377  
 Bus: 919 851 8077  
 Fax: 919 851 8107

TRANSPORTATION PLANNING/DESIGN - BRIDGE/STRUCTURE DESIGN  
 CIVIL/SITE DESIGN - GIS/GPS - CONSTRUCTION OBSERVATION

**DOCUMENT NOT CONSIDERED FINAL  
 UNLESS ALL SIGNATURES COMPLETED**

PROJECT REFERENCE NO. <b>U-5888</b>	SHEET NO. <b>6</b>
RW SHEET NO. 9/30/2021	HYDRAULICS ENGINEER 9/30/2021
ROADWAY DESIGN ENGINEER 9/30/2021	PROFESSIONAL ENGINEER SEAL 35016
	PROFESSIONAL ENGINEER SEAL 31977

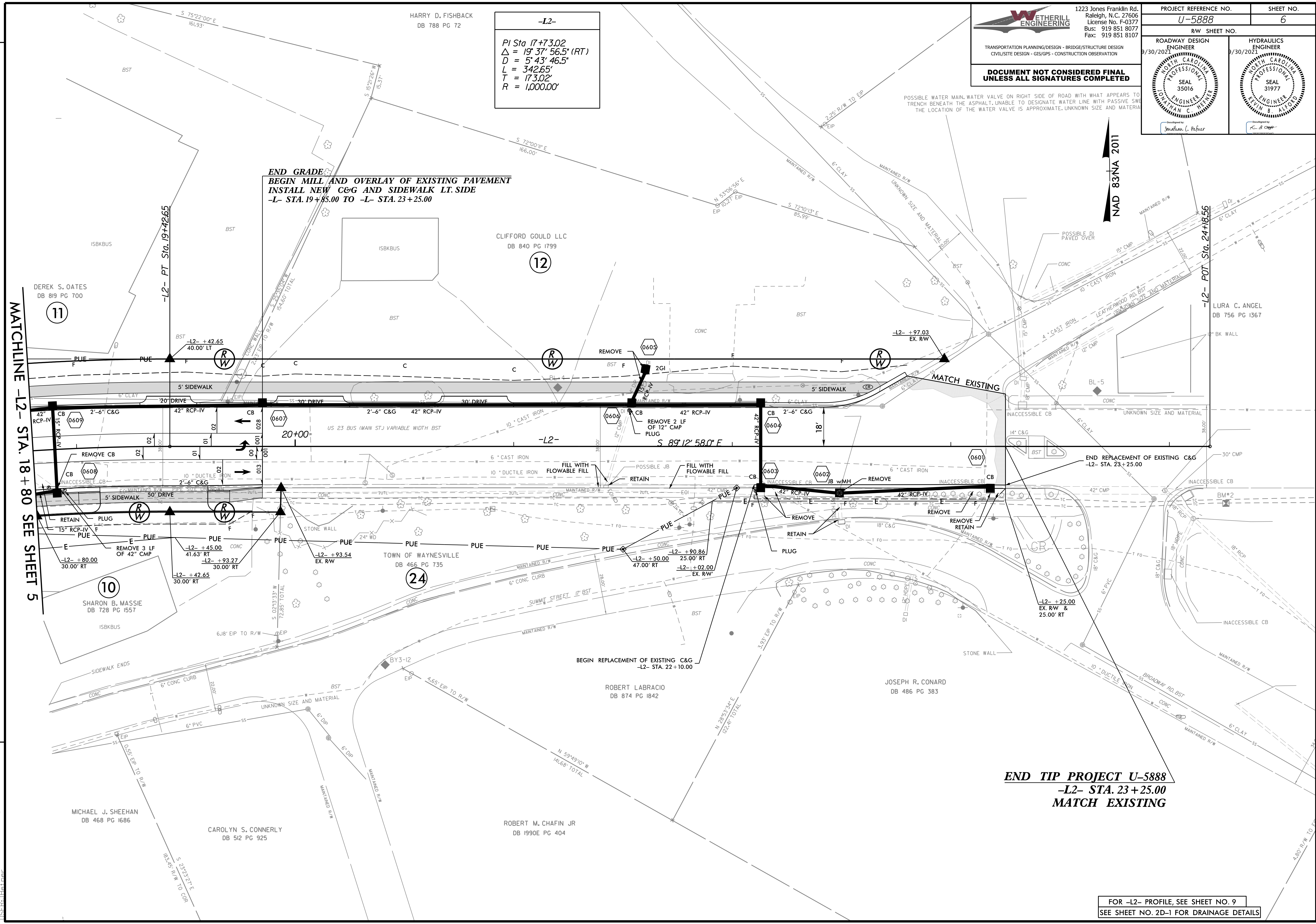
**-L2-**

PI Sta 17+73.02  
 $\Delta = 19' 37" 56.5" (RT)$   
 $D = 5' 43" 46.5"$   
 $L = 342.65'$   
 $T = 173.02'$   
 $R = 1,000.00'$

**END GRADE  
 BEGIN MILL AND OVERLAY OF EXISTING PAVEMENT  
 INSTALL NEW C&G AND SIDEWALK LT. SIDE  
 -L- STA. 19+85.00 TO -L- STA. 23+25.00**

POSSIBLE WATER MAIN WATER VALVE ON RIGHT SIDE OF ROAD WITH WHAT APPEARS TO BE TRENCH BENEATH THE ASPHALT. UNABLE TO DESIGNATE WATER LINE WITH PASSIVE SWG. THE LOCATION OF THE WATER VALVE IS APPROXIMATE. UNKNOWN SIZE AND MATERIAL.

NAD 83/NA 2011



MATCHLINE -L2- STA. 18+80 SEE SHEET 5

**END TIP PROJECT U-5888  
 -L2- STA. 23+25.00  
 MATCH EXISTING**

FOR -L2- PROFILE, SEE SHEET NO. 9  
 SEE SHEET NO. 2D-1 FOR DRAINAGE DETAILS

9/28/2021 U-5888\_rdy\_psh\_06.dgn  
 T:\S:\18\1806\1806.dgn