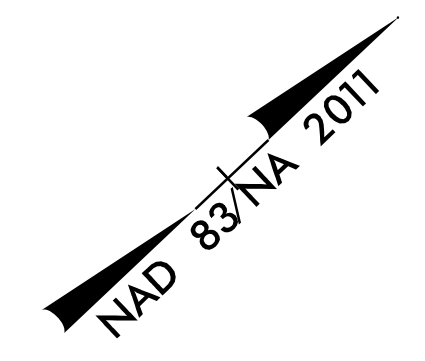
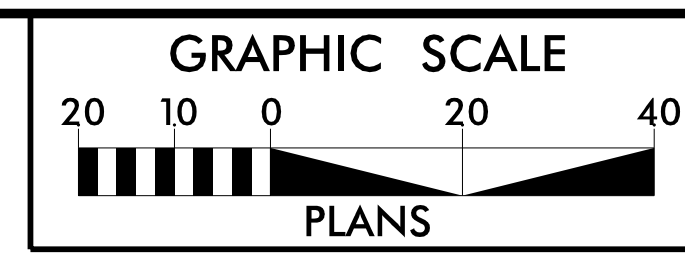
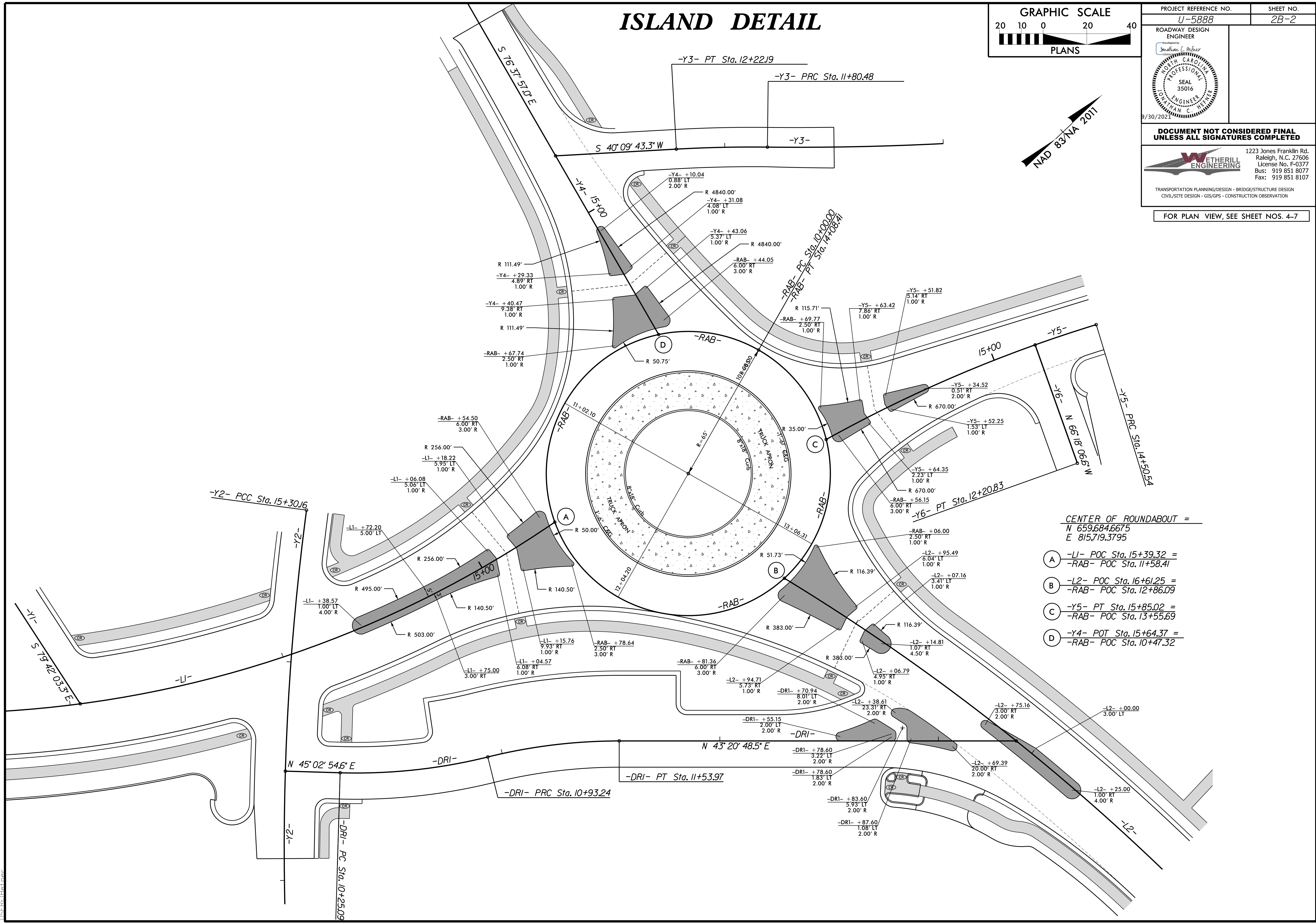


ISLAND DETAIL



PROJECT REFERENCE NO. U-5888	SHEET NO. 2B-2
ROADWAY DESIGN ENGINEER <i>Jonathan C. Heiber</i>	
<p>DOCUMENT NOT CONSIDERED FINAL UNLESS ALL SIGNATURES COMPLETED</p>	
<p>1223 Jones Franklin Rd. Raleigh, N.C. 27606 License No. F-0377 Bus: 919 851 8077 Fax: 919 851 8107</p>	
<p>TRANSPORTATION PLANNING/DESIGN - BRIDGE/STRUCTURE DESIGN CIVIL/SITE DESIGN - GIS/GPS - CONSTRUCTION OBSERVATION</p>	
<p>FOR PLAN VIEW, SEE SHEET NOS. 4-7</p>	



CENTER OF ROUNDABOUT =
N 659,684.6675
E 815,719.3795

(A) -L1- POC Sta. 15+39.32 =
-RAB- POC Sta. 11+58.41

(B) -L2- POC Sta. 16+61.25 =
-RAB- POC Sta. 12+86.09

(C) -Y5- PT Sta. 15+85.02 =
-RAB- POC Sta. 13+55.69

(D) -Y4- POT Sta. 15+64.37 =
-RAB- POC Sta. 10+47.32

9/28/2021 15:58:58_rdy_psh_02B-2.dgn
JCH