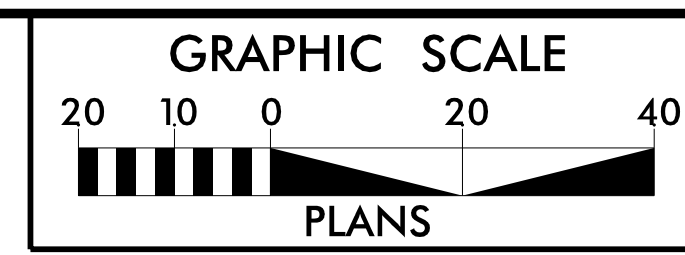


POINT INFORMATION				ELEMENT INFORMATION				
POINT NO.	CHAIN	STATION	OFFSET	ELEMENT TYPE	LENGTH (FT)	RADIUS (FT)	CHORD LENGTH (FT)	CHORD BEARING
1	L1	13+63.21	-20.00	ARC	21.00	10.00	17.35	N19°33'19.41"W
2	Y1	11+19.56	11.50					
3	Y1	11+41.80	-11.50					
4	L1	13+14.74	-20.00	ARC	11.45	10.00	10.84	N67°29'41.99"E
5	L1	13+94.96	-20.00					
6	Y2	15+72.61	10.00	ARC	11.63	10.00	10.99	N7°49'55.40"W
7	Y2	15+52.62	-10.00					
8	L1	14+42.55	-20.00	ARC	20.90	10.00	17.30	N79°55'51.00"E
9	L1	14+52.23	-20.00					
10	L1	15+40.77	-30.56	ARC	85.25	200.00	84.61	N6°43'22.63"E
11	Y4	15+37.13	29.27	ARC	74.77	100.00	73.04	N26°54'36.35"W
12	Y4	14+82.61	13.93	ARC	57.10	130.00	56.64	N60°54'48.88"W
13	Y4	14+12.15	12.00	ARC	70.50	1288.00	70.49	N75°03'51.85"W
14	Y4	14+12.15	-12.00					
15	Y4	14+52.86	-12.64	ARC	40.72	1288.00	40.72	S77°32'17.26"E
16	Y4	15+78.74	-32.89	ARC	127.85	500.00	127.50	S85°46'08.81"E
17	Y5	15+44.62	19.11	ARC	74.00	70.00	70.60	N56°37'14.28"E
18	Y5	14+50.54	12.00	LINE	96.54	N/A	N/A	N26°20'08.63"E
19	Y4	14+48.62	-12.52					
20	Y3	12+49.60	9.00	ARC	32.24	30.00	30.71	N70°57'11.95"E
21	Y3	12+37.54	-9.00					
22	Y4	15+06.37	-17.22	ARC	21.78	10.00	17.72	S22°13'10.81"E
23	Y5	14+50.54	-12.00					
24	Y5	15+30.37	-14.28	ARC	78.29	428.00	78.18	S21°05'44.34"W
25	Y5	15+79.83	-23.17	ARC	49.03	150.00	48.82	S06°29'27.22"W
26	L2	16+75.31	-36.14	ARC	24.17	20.00	22.73	S37°29'45.99"E
27	L2	17+36.05	-18.00	ARC	65.65	130.00	64.96	S86°35'09.16"E
28	Y5	14+59.35	-12.03					
29	Y6	12+55.97	10.00	ARC	15.97	10.00	14.32	S20°33'42.50"E
30	Y6	12+47.97	14.00	ARC	9.27	10.00	8.94	N87°07'59.23"E
31	Y6	12+44.23	-10.00					
32	Y5	15+12.62	-13.38	ARC	33.34	20.00	29.61	S65°56'28.40"W
33	L2	17+65.34	18.00					
34	L1	15+45.84	53.12	ARC	157.52	300.00	155.72	S65°34'38.77"W
35	L1	14+66.29	20.00	ARC	92.74	160.00	91.45	S33°55'47.51"W
36	L1	14+16.89	20.00	ARC	11.59	10.00	10.95	S10°13'25.81"E
37	Y2	16+18.99	-14.00					
38	L1	13+68.56	20.00	ARC	18.70	10.00	16.09	N82°06'30.04"E
39	Y2	16+36.82	14.00					
40	Y2	16+65.00	14.00	ARC	32.93	10.00	19.94	S48°39'15.42"W
41	Y2	16+63.53	33.89					
42	Y2	16+63.82	31.91	ARC	19.53	10.00	16.57	S87°02'09.11"W
43	L1	13+46.27	40.67					
44	Y2	16+67.77	-13.99	ARC	8.70	5.50	7.82	N0°15'15.28"W
45	DR1	10+19.62	12.00	ARC	8.72	5.50	7.84	S89°30'56.65"E
46	Y2	16+32.20	-14.00					
47	DR1	10+19.63	-12.00	ARC	8.72	5.50	7.84	S89°30'56.65"E
48	DR1	10+64.63	-12.00	ARC	7.96	5.00	7.15	N9°37'44.15"W
49	DR1	10+70.00	-17.05					

BEGIN CONSTRUCTION
-Y4- STA. 14+00.00

INTERSECTION DETAIL



PROJECT REFERENCE NO. U-5888 SHEET NO. 2B-1

ROADWAY DESIGN ENGINEER

WETHERILL ENGINEERING
1223 Jones Franklin Rd.
Raleigh, N.C. 27606
License No. F-0377
Bus: 919 851 8077
Fax: 919 851 8107

TRANSPORTATION PLANNING/DESIGN - BRIDGE/STRUCTURE DESIGN
CIVIL/SITE DESIGN - GIS/GPS - CONSTRUCTION OBSERVATION

FOR PLAN VIEW, SEE SHEET NOS. 4-7

ROUNDABOUT 1'-6" C&G BACK OF CURB INFORMATION					
CHAIN	STATION	OFFSET	NORTHING	EASTING	ELEVATION
-RAB-	10+00.00	19.50	659,728.1794	815,706.0766	2628.56
-RAB-	11+02.10	19.50	659,671.3658	815,675.8673	2631.32
-RAB-	12+04.20	19.50	659,641.1549	815,732.6801	2634.08
-RAB-	13+06.31	19.50	659,697.9736	815,762.8904	2631.32

ROUNDABOUT 8"x18" BACK OF CURB INFORMATION					
CHAIN	STATION	OFFSET	NORTHING	EASTING	ELEVATION
-RAB-	10+00.00	36.25	659,712.1613	815,710.9739	2629.39
-RAB-	11+02.10	36.25	659,676.2626	815,691.8856	2632.15
-RAB-	12+04.20	36.25	659,657.1733	815,727.7837	2634.91
-RAB-	13+06.31	36.25	659,693.0752	815,746.8727	2632.15

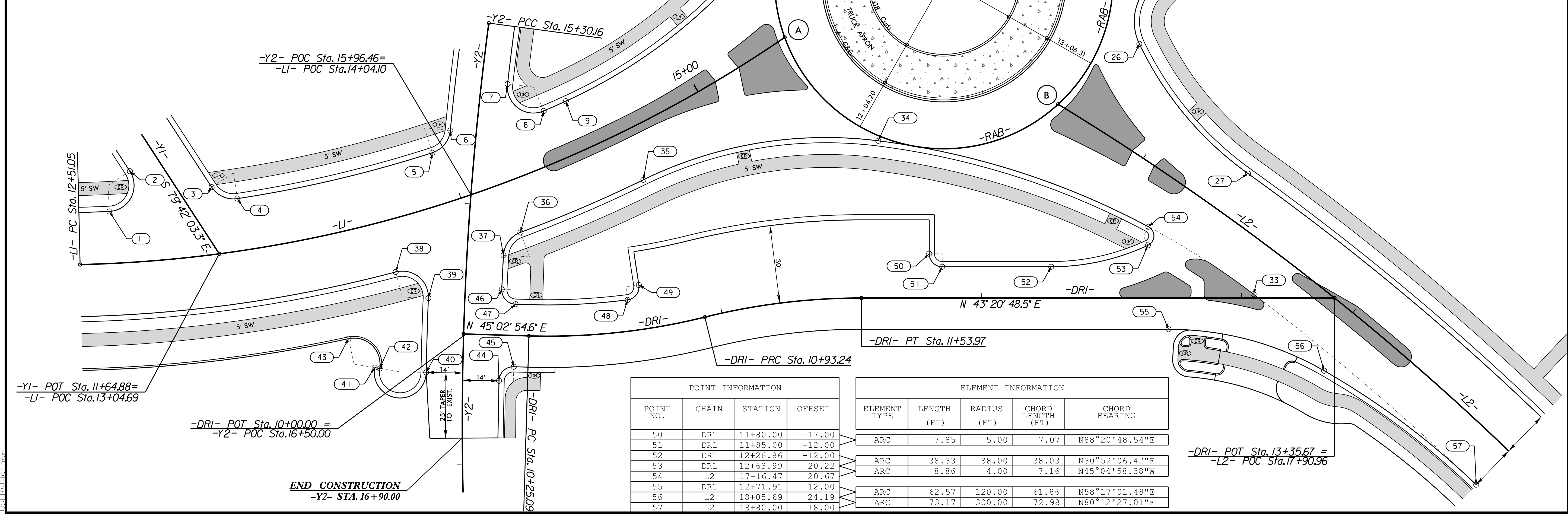
CENTER OF ROUNDABOUT =
N 659,684,6675
E 815,719,3795

A -LI- POC Sta. 15+39.32 =
-RAB- POC Sta. 11+58.41

B -L2- POC Sta. 16+61.25 =
-RAB- POC Sta. 12+86.09

C -Y5- PT Sta. 15+85.02 =
-RAB- POC Sta. 13+55.69

D -Y4- POT Sta. 15+64.37 =
-RAB- POC Sta. 10+47.32



POINT INFORMATION				ELEMENT INFORMATION				
POINT NO.	CHAIN	STATION	OFFSET	ELEMENT TYPE	LENGTH (FT)	RADIUS (FT)	CHORD LENGTH (FT)	CHORD BEARING
50	DR1	11+80.00	-17.00	ARC	7.85	5.00	7.07	N88°20'48.54"E
51	DR1	11+85.00	-12.00					
52	DR1	12+26.86	-12.00					
53	DR1	12+63.99	-20.22	ARC	38.33	88.00	38.03	N30°52'06.42"E
54	L2	17+16.47	20.67	ARC	8.86	4.00	7.16	N45°04'58.38"W
55	DR1	12+71.91	12.00					
56	L2	18+05.69	24.19	ARC	62.57	120.00	61.86	N58°17'01.48"E
57	L2	18+80.00	18.00	ARC	73.17	300.00	72.98	N80°12'27.01"E

9/28/2021 15:58:08 rdu.psh_02B-1.dgn