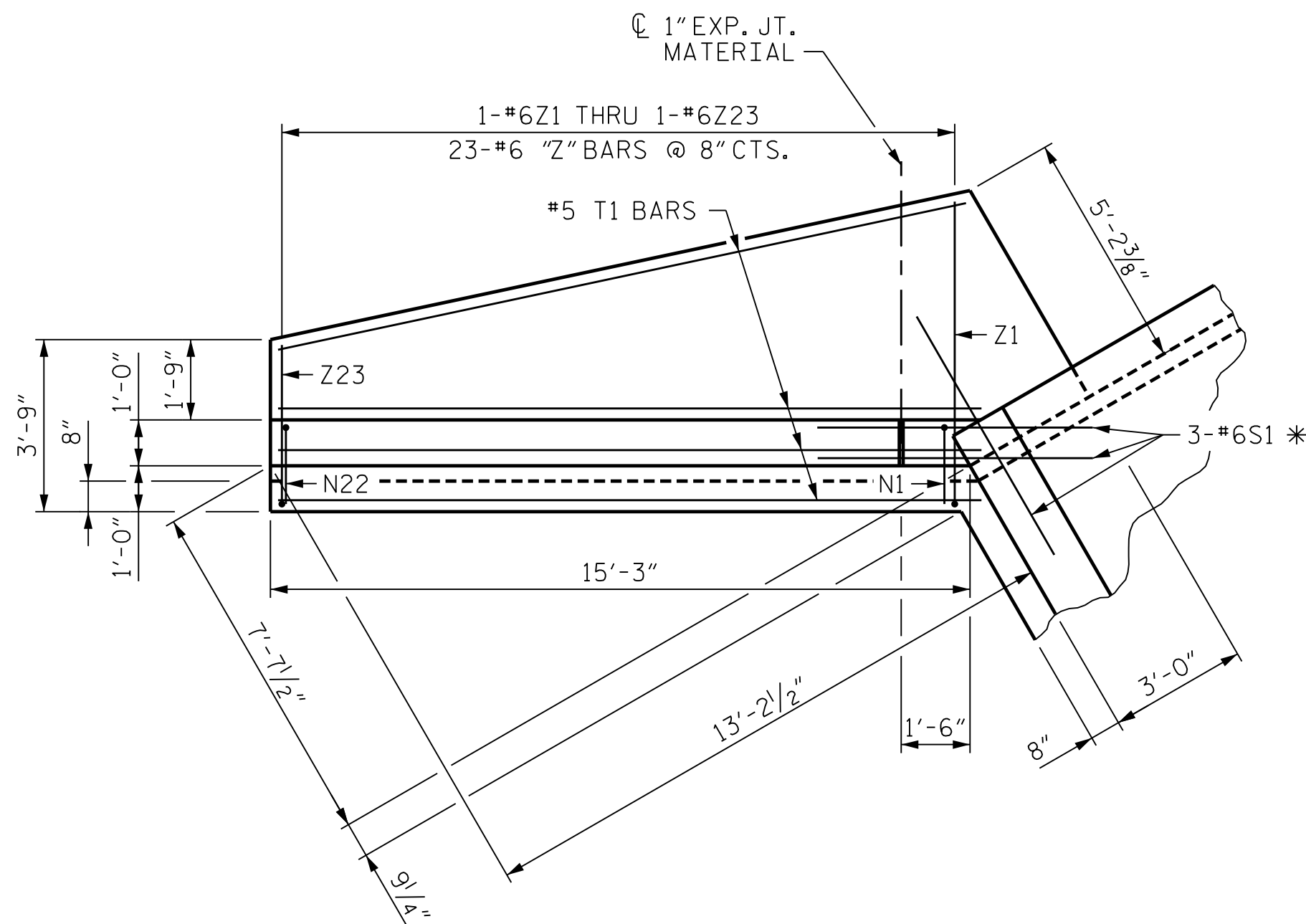
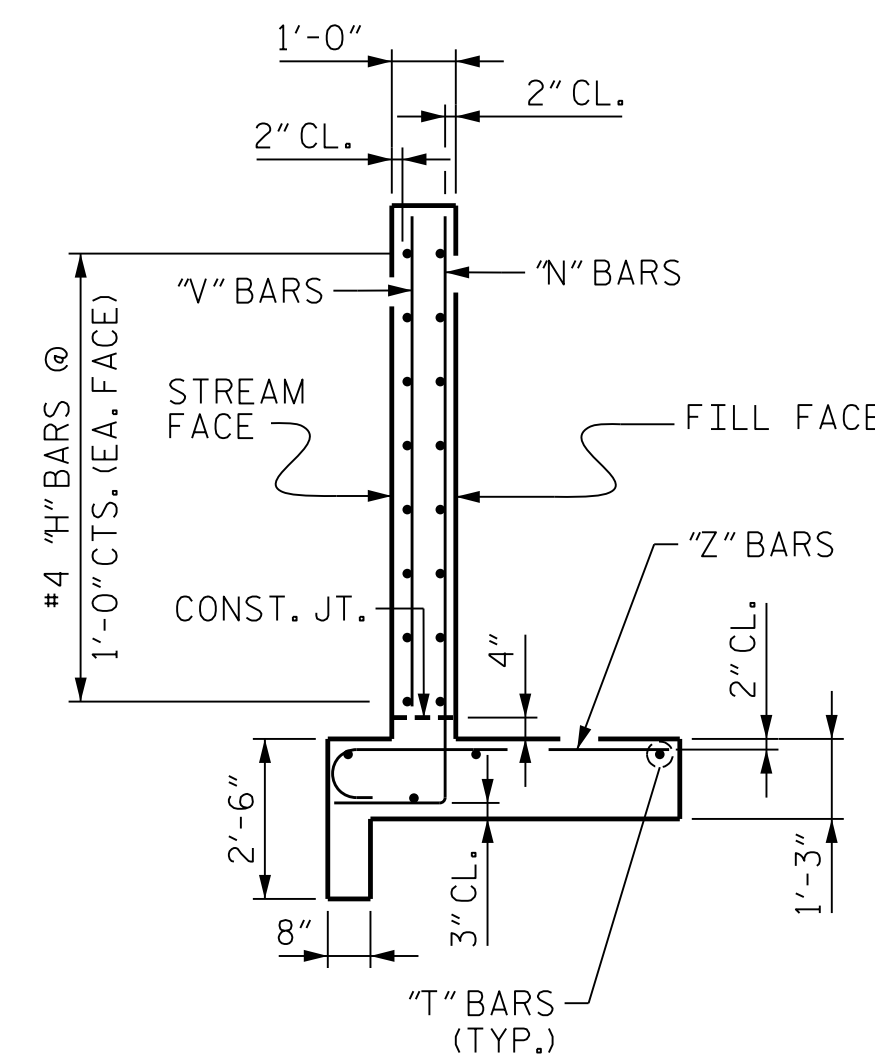


ELEVATION-W1



PLAN-W1

* BOTTOM OF FLOOR SLAB AND FOOTING



TYPICAL WING SECTION

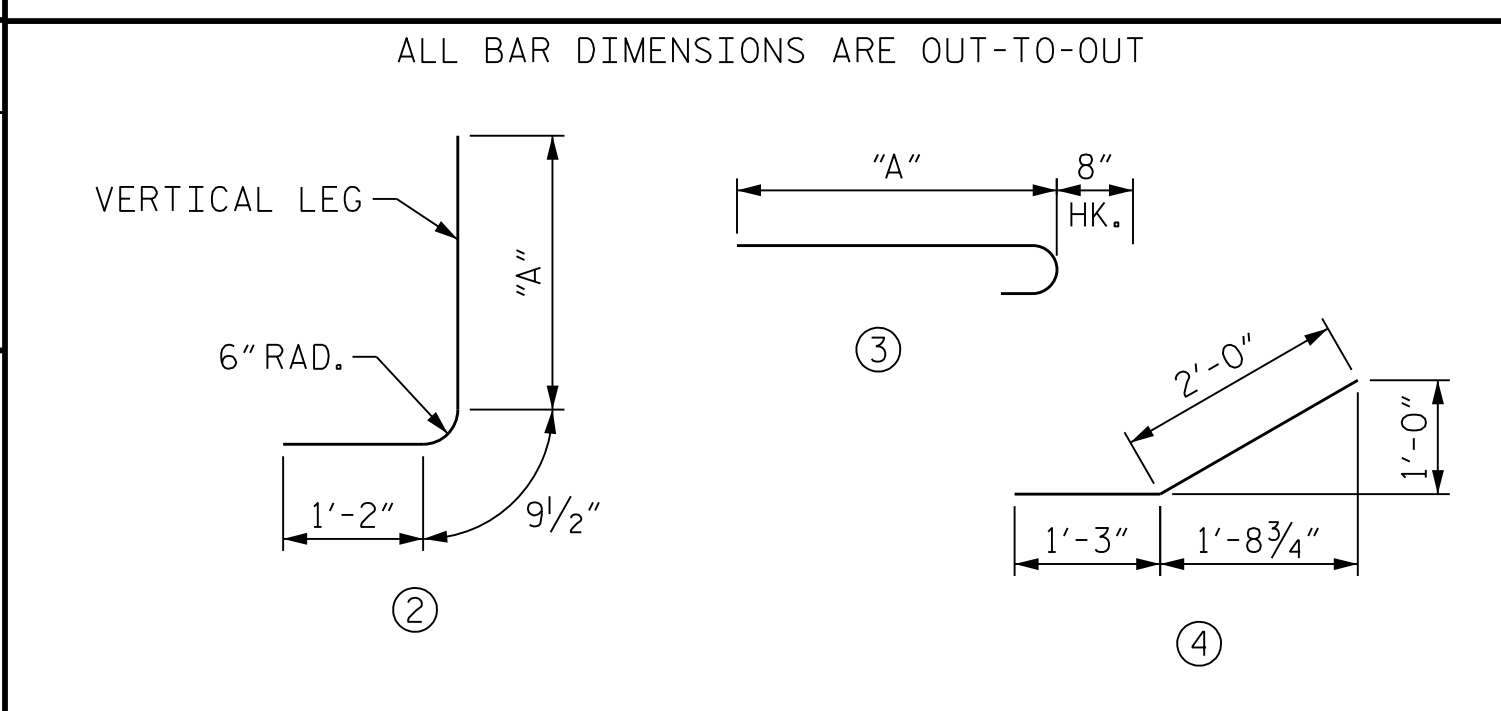
REINFORCING BAR SCHEDULE

BAR	NO.	SIZE	TYPE	DIM "A"	LENGTH	WEIGHT	BAR	NO.	SIZE	TYPE	DIM "A"	LENGTH	WEIGHT
H1	32	# 4	4	-	3' - 3"	69	V1	4	# 4	STR	-	8' - 1"	22
H2	16	# 4	STR	-	13' - 5"	143	V2	2	# 4	STR	-	7' - 11"	11
H3	4	# 4	STR	-	10' - 11"	29	V3	2	# 4	STR	-	7' - 6"	10
H4	4	# 4	STR	-	8' - 0"	21	V4	2	# 4	STR	-	7' - 2"	10
H5	4	# 4	STR	-	5' - 2"	14	V5	2	# 4	STR	-	6' - 10"	9
H6	4	# 4	STR	-	2' - 3"	6	V6	2	# 4	STR	-	6' - 6"	9
H7	4	# 4	STR	-	14' - 2"	38	V7	2	# 4	STR	-	6' - 2"	8
							V8	2	# 4	STR	-	5' - 10"	8
N1	4	# 6	2	8' - 10 1/2"	10' - 10"	65	V9	2	# 4	STR	-	5' - 5"	7
N2	2	# 6	2	8' - 8 1/2"	10' - 8"	32	V10	2	# 4	STR	-	5' - 1"	7
N3	2	# 6	2	8' - 5 1/2"	10' - 5"	31	V11	2	# 4	STR	-	4' - 9"	6
N4	2	# 6	2	8' - 2 1/2"	10' - 2"	31	V12	2	# 4	STR	-	4' - 5"	6
N5	2	# 6	2	7' - 11 1/2"	9' - 11"	30	V13	2	# 4	STR	-	4' - 1"	5
N6	2	# 6	2	7' - 9 1/2"	9' - 9"	29	V14	2	# 4	STR	-	3' - 8"	5
N7	2	# 6	2	7' - 6 1/2"	9' - 6"	29	V15	2	# 4	STR	-	3' - 4"	4
N8	2	# 6	2	7' - 3 1/2"	9' - 3"	28	Z1	2	# 6	3	6' - 7"	7' - 3"	22
N9	2	# 6	2	7' - 0 1/2"	9' - 0"	27	Z2	2	# 6	3	6' - 5"	7' - 1"	21
N10	2	# 6	2	6' - 10 1/2"	8' - 10"	27	Z3	2	# 6	3	6' - 4"	7' - 0"	21
N11	2	# 6	2	6' - 7 1/2"	8' - 7"	26	Z4	2	# 6	3	6' - 2"	6' - 10"	21
N12	2	# 6	2	6' - 4 1/2"	8' - 4"	25	Z5	2	# 6	3	6' - 0"	6' - 8"	20
N13	2	# 6	2	6' - 1 1/2"	8' - 1"	24	Z6	2	# 6	3	5' - 11"	6' - 7"	20
N14	2	# 6	2	5' - 10 1/2"	7' - 10"	24	Z7	2	# 6	3	5' - 9"	6' - 5"	19
N15	2	# 6	2	5' - 8 1/2"	7' - 8"	23	Z8	2	# 6	3	5' - 7"	6' - 3"	19
N16	2	# 6	2	5' - 5 1/2"	7' - 5"	22	Z9	2	# 6	3	5' - 6"	6' - 2"	19
N17	2	# 6	2	5' - 2 1/2"	7' - 2"	22	Z10	2	# 6	3	5' - 4"	6' - 0"	18
N18	2	# 6	2	4' - 11 1/2"	6' - 11"	21	Z11	2	# 6	3	5' - 2"	5' - 10"	18
N19	2	# 6	2	4' - 9 1/2"	6' - 9"	20	Z12	2	# 6	3	5' - 0"	5' - 8"	17
N20	2	# 6	2	4' - 6 1/2"	6' - 6"	20	Z13	2	# 6	3	4' - 11"	5' - 7"	17
N21	2	# 6	2	4' - 3 1/2"	6' - 3"	19	Z14	2	# 6	3	4' - 9"	5' - 5"	16
N22	2	# 6	2	4' - 1 1/2"	6' - 1"	18	Z15	2	# 6	3	4' - 7"	5' - 3"	16
							Z16	2	# 6	3	4' - 6"	5' - 2"	16
S1	6	# 6	STR	-	6' - 0"	54	Z17	2	# 6	3	4' - 4"	5' - 0"	15
T1	8	# 5	STR	-	15' - 4"	128	Z18	2	# 6	3	4' - 2"	4' - 10"	15
							Z19	2	# 6	3	4' - 0"	4' - 8"	14
							Z20	2	# 6	3	3' - 11"	4' - 7"	14
							Z21	2	# 6	3	3' - 9"	4' - 5"	13
							Z22	2	# 6	3	3' - 7"	4' - 3"	13
							Z23	2	# 6	3	3' - 6"	4' - 2"	13

QUANTITIES

REINFORCING STEEL FOR 2 WINGS	1619 LBS.
CLASS A CONCRETE	16.4 C.Y.
2 WINGS	0.4 C.Y.
1 HEADWALL	0.3 C.Y.
1 END CURTAIN WALL	
TOTAL	17.1 C.Y.

BAR TYPES



PROJECT NO. U-2579AB
 FORSYTH COUNTY
 STATION: 19+75.11 -Y5B-

SHEET 3 OF 5

STATE OF NORTH CAROLINA
 DEPARTMENT OF TRANSPORTATION
 RALEIGH
 WINGS FOR
 CONCRETE BOX CULVERT
 90° SKEW



10/11/2021

REVISIONS

NO.	BY:	DATE:	NO.	BY:	DATE:
1			3		
2			4		

SHEET NO. C6-3
 TOTAL SHEETS 5



DOCUMENT NOT CONSIDERED FINAL
 UNLESS ALL SIGNATURES COMPLETED

PLOT DRIVER: NCDOT STRUCTURES DEFAULT PLOTTER.plt
 USER: PPRETERO
 DATE: 5/20/2021
 TIME: 10:33:42 AM
 FILE: ... \WINGWALL VIEWS

DES BY: T. MCALEENAN	DATE: 08/19	DWG BY: T. MCALEENAN	DATE: 08/19
DES CHK: R. TURNAGE	DATE: 08/19	CHK BY: R. TURNAGE	DATE: 08/19