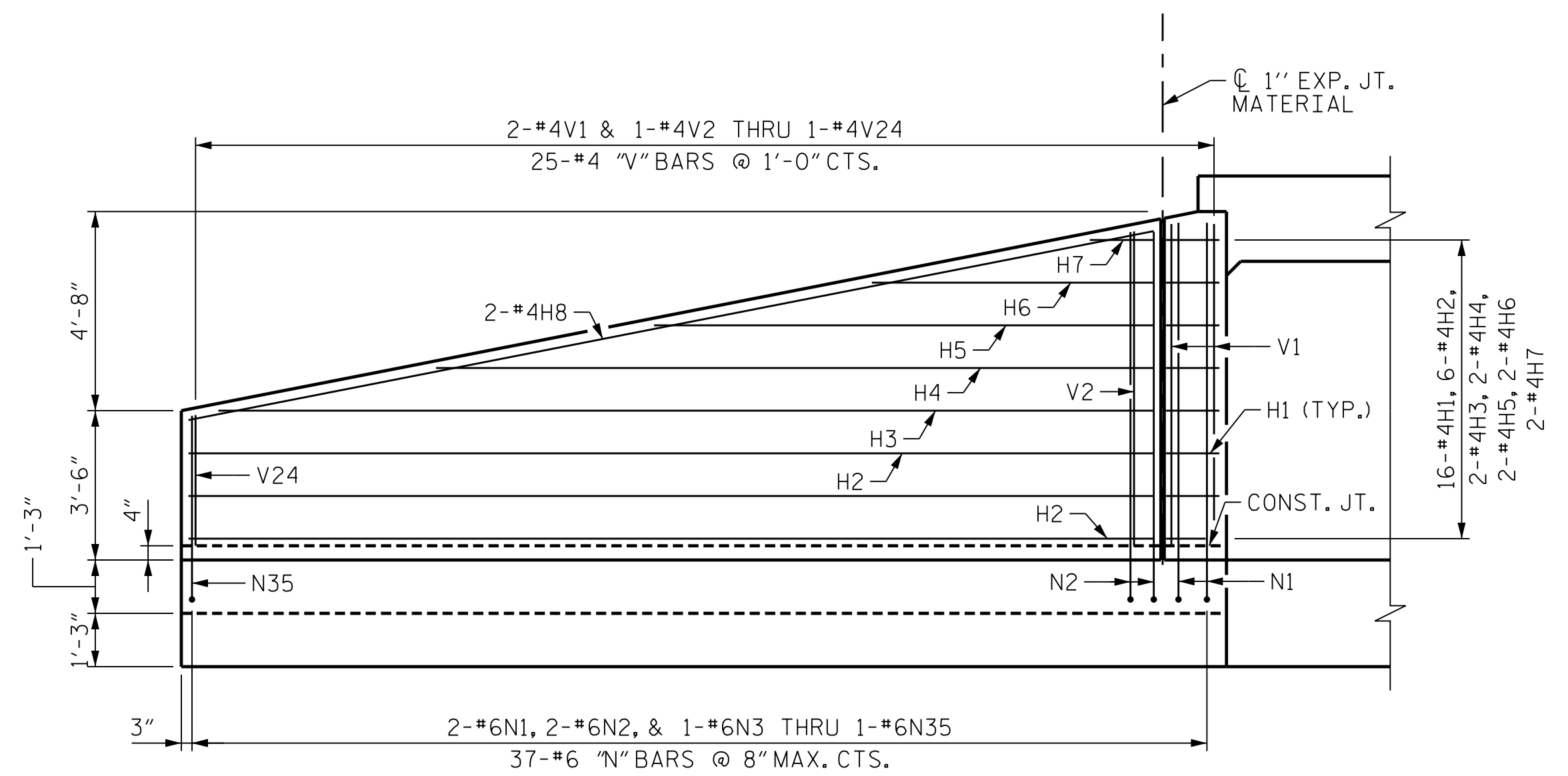
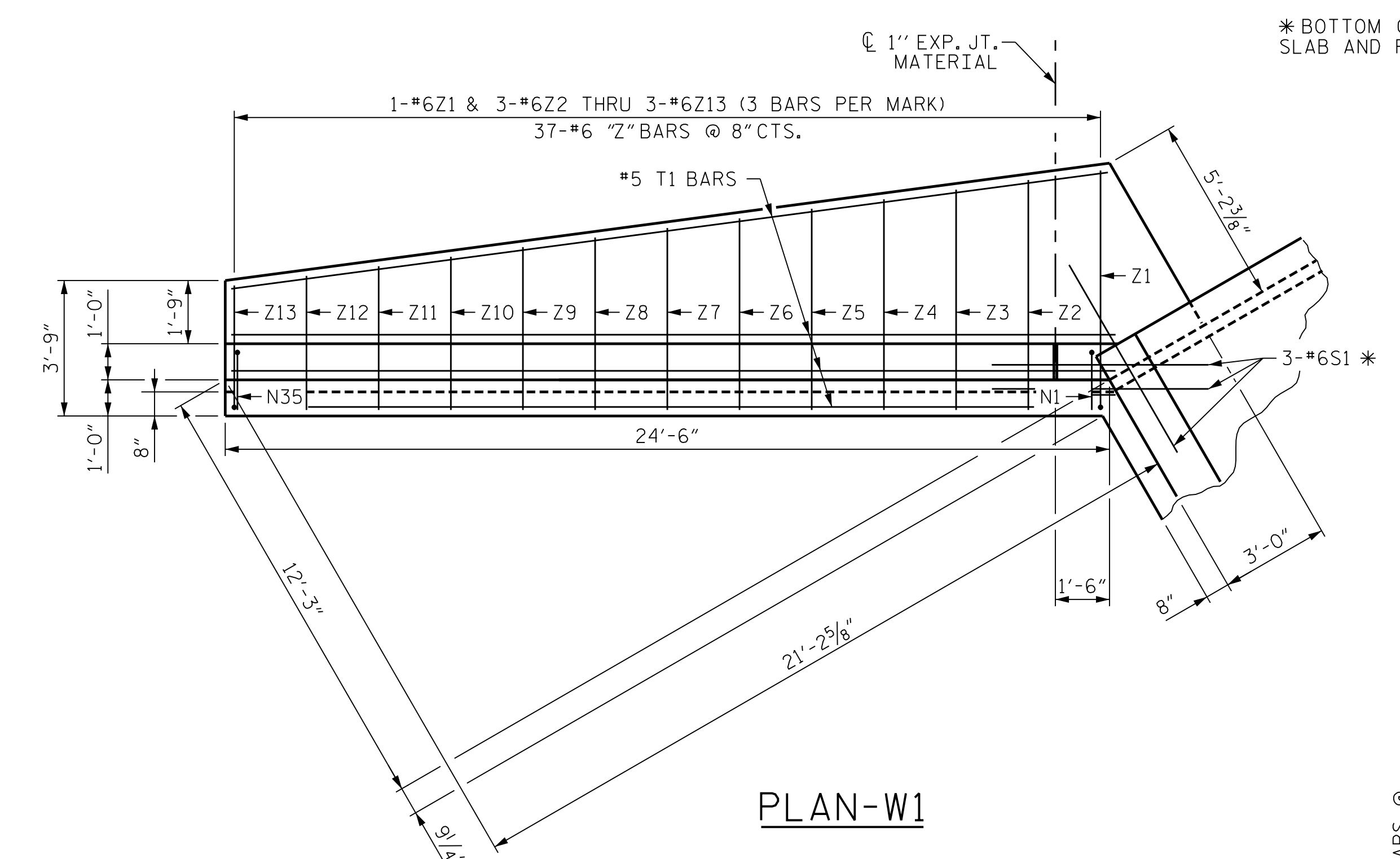


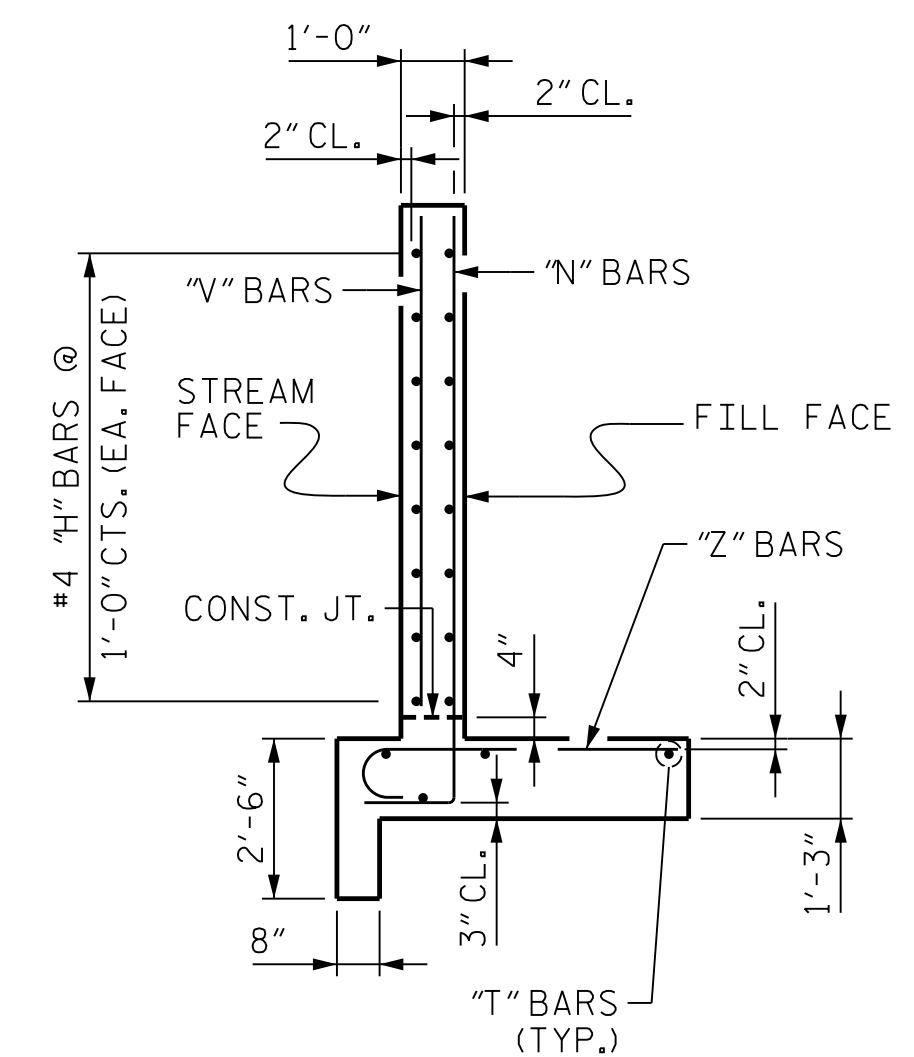
PLOT DRIVER: NCDOT.pdf_color_eng-50.ppt
 USER: PPETERSO DATE: 10/17/2021
 FILE: ... \WINGWALL VIEWS
 PENTABLE: NCDOT STRUCTURES DEFAULT (PEN.tbl)
 TIME: 8:08:14 AM



ELEVATION-W1



PLAN-W1

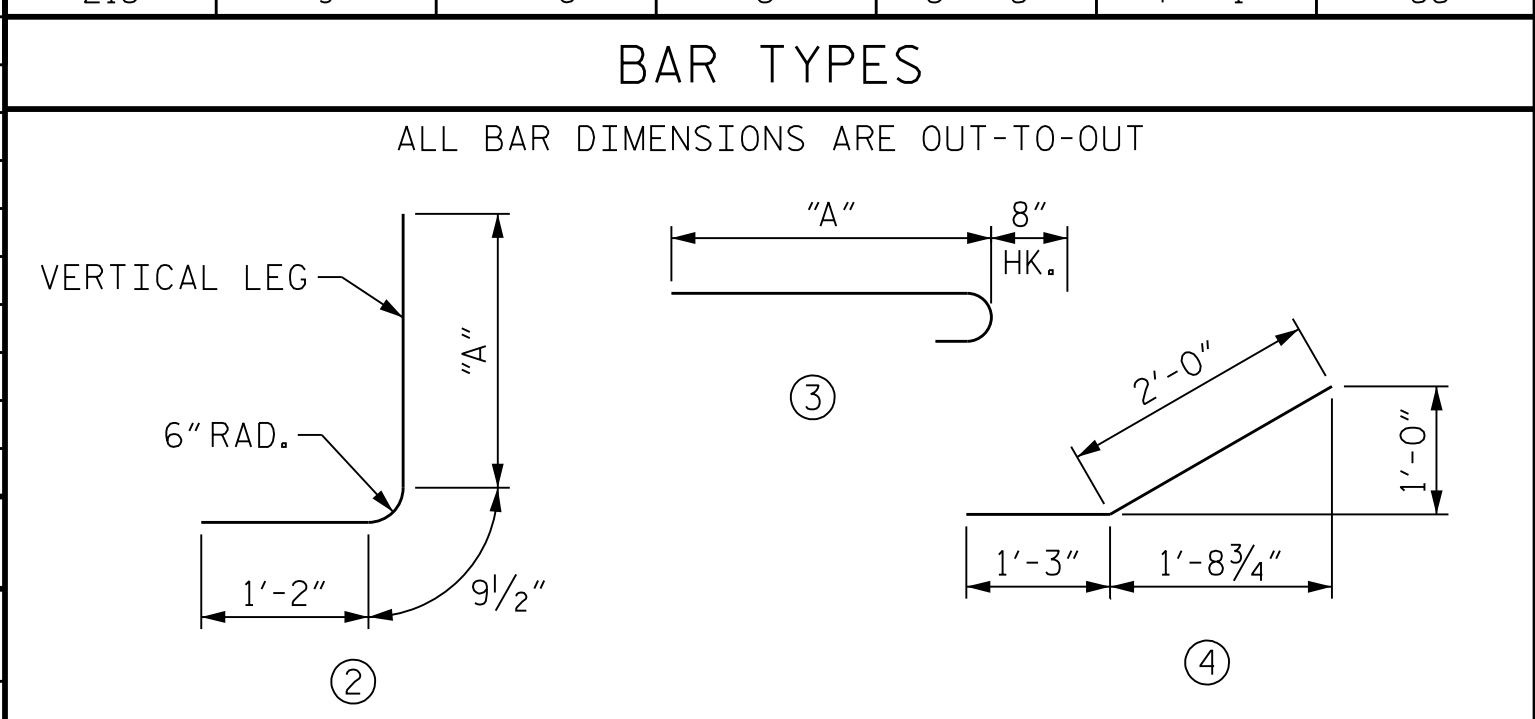


TYPICAL WING SECTION

REINFORCING BAR SCHEDULE

BAR	NO.	SIZE	TYPE	DIM "A"	LENGTH	WEIGHT	BAR	NO.	SIZE	TYPE	DIM "A"	LENGTH	WEIGHT
H1	48	# 4	4	-	3' - 3"	104	V1	6	# 4	STR	-	7' - 6"	30
H2	18	# 4	STR	-	22' - 7"	272	V2	3	# 4	STR	-	7' - 4"	15
H3	6	# 4	STR	-	21' - 11"	88	V3	3	# 4	STR	-	7' - 2"	14
H4	6	# 4	STR	-	16' - 10"	67	V4	3	# 4	STR	-	6' - 11"	14
H5	6	# 4	STR	-	11' - 8"	47	V5	3	# 4	STR	-	6' - 9"	14
H6	6	# 4	STR	-	6' - 7"	26	V6	3	# 4	STR	-	6' - 7"	13
H7	6	# 4	STR	-	1' - 6"	6	V7	3	# 4	STR	-	6' - 4"	13
H8	6	# 4	STR	-	23' - 0"	92	V8	3	# 4	STR	-	6' - 2"	12
N1	6	# 6	2	8' - 3 1/2"	10' - 3"	92	V9	3	# 4	STR	-	6' - 0"	12
N2	6	# 6	2	8' - 0 1/2"	10' - 0"	90	V10	3	# 4	STR	-	5' - 9"	12
N3	3	# 6	2	7' - 11 1/2"	9' - 11"	45	V11	3	# 4	STR	-	5' - 7"	11
N4	3	# 6	2	7' - 9 1/2"	9' - 9"	44	V12	3	# 4	STR	-	5' - 5"	11
N5	3	# 6	2	7' - 8 1/2"	9' - 8"	44	V13	3	# 4	STR	-	5' - 2"	10
N6	3	# 6	2	7' - 6 1/2"	9' - 6"	43	V14	3	# 4	STR	-	5' - 0"	10
N7	3	# 6	2	7' - 5 1/2"	9' - 5"	42	V15	3	# 4	STR	-	4' - 9"	10
N8	3	# 6	2	7' - 3 1/2"	9' - 3"	42	V16	3	# 4	STR	-	4' - 7"	9
N9	3	# 6	2	7' - 2 1/2"	9' - 2"	41	V17	3	# 4	STR	-	4' - 5"	9
N10	3	# 6	2	7' - 0 1/2"	9' - 0"	41	V18	3	# 4	STR	-	4' - 2"	8
N11	3	# 6	2	6' - 10 1/2"	8' - 10"	40	V19	3	# 4	STR	-	4' - 0"	8
N12	3	# 6	2	6' - 9 1/2"	8' - 9"	39	V20	3	# 4	STR	-	3' - 10"	8
N13	3	# 6	2	6' - 7 1/2"	8' - 7"	39	V21	3	# 4	STR	-	3' - 7"	7
N14	3	# 6	2	6' - 6 1/2"	8' - 6"	38	V22	3	# 4	STR	-	3' - 5"	7
N15	3	# 6	2	6' - 4 1/2"	8' - 4"	38	V23	3	# 4	STR	-	3' - 3"	7
N16	3	# 6	2	6' - 3 1/2"	8' - 3"	37	V24	3	# 4	STR	-	3' - 0"	6
N17	3	# 6	2	6' - 1 1/2"	8' - 1"	36	Z1	3	# 6	3	6' - 7"	7' - 3"	33
N18	3	# 6	2	5' - 11 1/2"	7' - 11"	36	Z2	9	# 6	3	6' - 4"	7' - 0"	95
N19	3	# 6	2	5' - 10 1/2"	7' - 10"	35	Z3	9	# 6	3	6' - 1"	6' - 9"	91
N20	3	# 6	2	5' - 8 1/2"	7' - 8"	35	Z4	9	# 6	3	5' - 10"	6' - 6"	88
N21	3	# 6	2	5' - 7 1/2"	7' - 7"	34	Z5	9	# 6	3	5' - 7"	6' - 3"	84
N22	3	# 6	2	5' - 5 1/2"	7' - 5"	33	Z6	9	# 6	3	5' - 3"	5' - 11"	80
N23	3	# 6	2	5' - 4 1/2"	7' - 4"	33	Z7	9	# 6	3	5' - 0"	5' - 8"	77
N24	3	# 6	2	5' - 2 1/2"	7' - 2"	32	Z8	9	# 6	3	4' - 9"	5' - 5"	73
N25	3	# 6	2	5' - 0 1/2"	7' - 0"	32	Z9	9	# 6	3	4' - 6"	5' - 2"	70
N26	3	# 6	2	4' - 11 1/2"	6' - 11"	31	Z10	9	# 6	3	4' - 3"	4' - 11"	66
N27	3	# 6	2	4' - 9 1/2"	6' - 9"	30	Z11	9	# 6	3	4' - 0"	4' - 8"	63
N28	3	# 6	2	4' - 8 1/2"	6' - 8"	30	Z12	9	# 6	3	3' - 8"	4' - 4"	59
N29	3	# 6	2	4' - 6 1/2"	6' - 6"	29	Z13	9	# 6	3	3' - 5"	4' - 1"	55
N30	3	# 6	2	4' - 5 1/2"	6' - 5"	29							
N31	3	# 6	2	4' - 3 1/2"	6' - 3"	28							
N32	3	# 6	2	4' - 2 1/2"	6' - 2"	28							
N33	3	# 6	2	4' - 0 1/2"	6' - 0"	27							
N34	3	# 6	2	3' - 10 1/2"	5' - 10"	26							
N35	3	# 6	2	3' - 9 1/2"	5' - 9"	26							
S1	9	# 6	STR	-	6' - 0"	81							
T1	12	# 5	STR	-	24' - 6"	307							

QUANTITIES	
REINFORCING STEEL FOR 3 WINGS	3639 LBS.
CLASS A CONCRETE	37.5 C.Y.
3 WINGS	0.4 C.Y.
1 HEADWALL	0.4 C.Y.
1 END CURTAIN WALL	0.4 C.Y.
TOTAL	38.3 C.Y.



PROJECT NO. U-2579AB
 FORSYTH COUNTY
 STATION: 792+88.12 -L-
 SHEET 4 OF 6



STATE OF NORTH CAROLINA
 DEPARTMENT OF TRANSPORTATION
 WINGS FOR CONCRETE BOX CULVERT
 90° SKEW

REVISIONS					
NO.	BY:	DATE:	NO.	BY:	DATE:
1			3		
2			4		

DATE: 10/11/2021

DR HDR Engineering, Inc. of the Carolinas
 555 Fayetteville St., Suite 900 Raleigh, N.C. 27601
 N.C.B.E.L.S. License Number: F-0116

DOCUMENT NOT CONSIDERED FINAL
 UNLESS ALL SIGNATURES COMPLETED

SHEET NO. C2-4
 TOTAL SHEETS 6

DES BY: T. MCALEENAN	DATE: 11/19	DWG BY: T. MCALEENAN	DATE: 11/19
DES CHK: R. TURNAGE	DATE: 11/19	CHK BY: R. TURNAGE	DATE: 11/19