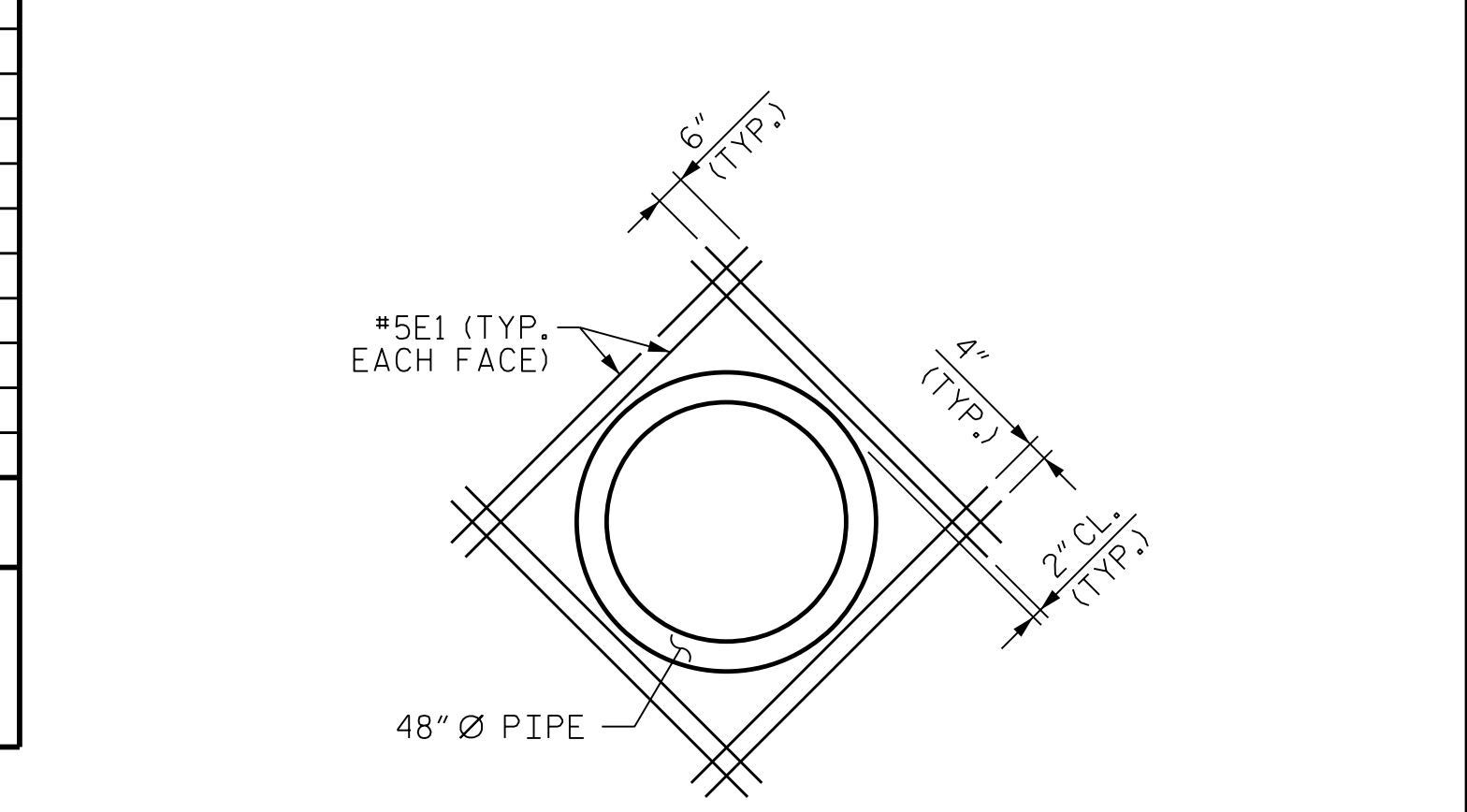
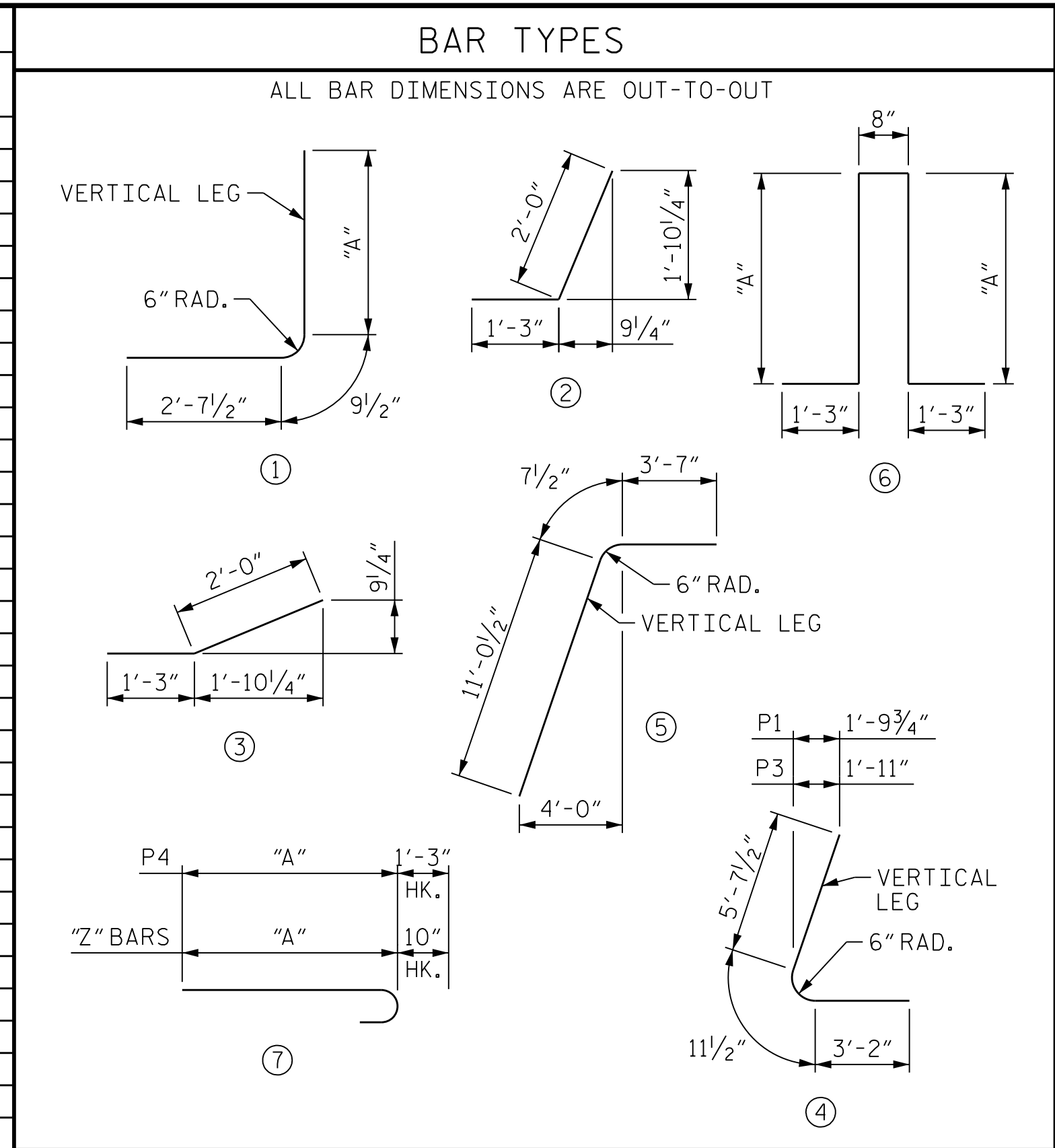


REINFORCING BAR SCHEDULE FOR WINGWALLS W1 AND W2

BAR	NO.	SIZE	TYPE	DIM "A"	LENGTH	WEIGHT	BAR	NO.	SIZE	TYPE	DIM "A"	LENGTH	WEIGHT	BAR	NO.	SIZE	TYPE	DIM "A"	LENGTH	WEIGHT
B1	4	# 4	STR	-	11' - 0"	29	N29	8	# 7	1	12' - 10"	16' - 3"	266	V10	1	# 4	STR	-	8' - 0"	5
C1	17	# 6	STR	-	10' - 0"	255	N30	8	# 7	1	12' - 7"	16' - 0"	262	V11	1	# 4	STR	-	7' - 7"	5
C2	8	# 6	STR	-	22' - 0"	264	N31	8	# 7	1	12' - 4"	15' - 9"	258	V12	1	# 4	STR	-	7' - 1"	5
E1	16	# 5	STR	-	6' - 10"	114	N32	8	# 7	1	12' - 1"	15' - 6"	253	V13	1	# 4	STR	-	6' - 8"	4
H1	24	# 4	2	-	3' - 3"	52	N33	8	# 7	1	11' - 10"	15' - 3"	249	V14	2	# 4	STR	-	12' - 5"	17
H2	14	# 4	STR	-	11' - 8"	109	N34	8	# 7	1	11' - 7"	15' - 0"	245	V15	3	# 4	STR	-	12' - 3"	25
H3	2	# 4	STR	-	10' - 5"	14	N35	8	# 7	1	11' - 4"	14' - 9"	241	V16	4	# 4	STR	-	12' - 0"	32
H4	2	# 4	STR	-	8' - 3"	11	N36	8	# 7	1	11' - 1"	14' - 6"	237	V17	4	# 4	STR	-	11' - 9"	31
H5	2	# 4	STR	-	6' - 2"	8	P1	2	# 9	4	-	9' - 9"	66	V18	4	# 4	STR	-	11' - 6"	31
H6	2	# 4	STR	-	4' - 0"	5	P2	2	# 9	5	-	15' - 3"	104	V19	4	# 4	STR	-	11' - 3"	30
H7	2	# 4	STR	-	1' - 11"	3	P3	2	# 9	4	-	9' - 9"	66	V20	4	# 4	STR	-	11' - 0"	29
H8	2	# 4	STR	-	12' - 10"	17	P4	2	# 9	7	11' - 6"	12' - 9"	87	V21	4	# 4	STR	-	10' - 9"	29
H9	26	# 4	3	-	3' - 3"	56	S1	3	# 4	STR	-	6' - 0"	27	V22	4	# 4	STR	-	10' - 6"	28
H10	22	# 4	STR	-	38' - 2"	561	S2	1	# 4	6	4' - 9"	12' - 8"	8	V23	4	# 4	STR	-	10' - 3"	27
H11	2	# 4	STR	-	35' - 7"	48	S3	1	# 4	6	4' - 5"	12' - 0"	8	V24	4	# 4	STR	-	10' - 0"	27
H12	2	# 4	STR	-	19' - 5"	26	S4	1	# 4	6	4' - 1"	11' - 4"	8	V25	2	# 4	STR	-	6' - 1"	8
H13	2	# 4	STR	-	3' - 3"	4	S5	1	# 4	6	3' - 8"	10' - 6"	7	V26	2	# 4	STR	-	10' - 6"	14
N1	2	# 7	1	13' - 2"	16' - 7"	68	S6	1	# 4	6	3' - 4"	9' - 10"	7	V79	2	# 4	STR	-	4' - 0"	5
N2	1	# 7	1	12' - 11"	16' - 4"	33	S7	1	# 4	6	3' - 0"	9' - 2"	6	V80	2	# 4	STR	-	8' - 10"	12
N3	1	# 7	1	12' - 8"	16' - 1"	33	S8	1	# 4	6	2' - 9"	8' - 8"	6	Z1	2	# 7	7	9' - 5"	10' - 3"	42
N4	1	# 7	1	12' - 6"	15' - 11"	33	S9	1	# 4	6	2' - 4"	7' - 10"	5	Z2	3	# 7	7	9' - 2"	10' - 0"	61
N5	1	# 7	1	12' - 3"	15' - 8"	32	S10	1	# 4	6	2' - 0"	7' - 2"	5	Z3	3	# 7	7	8' - 11"	9' - 9"	60
N6	1	# 7	1	12' - 0"	15' - 5"	32	S11	1	# 4	6	1' - 8"	6' - 6"	4	Z4	3	# 7	7	8' - 7"	9' - 5"	58
N7	1	# 7	1	11' - 9"	15' - 2"	31	S12	1	# 4	6	4' - 10"	12' - 10"	9	Z5	3	# 7	7	8' - 4"	9' - 2"	56
N8	1	# 7	1	11' - 6"	14' - 11"	30	S13	1	# 4	6	4' - 5"	12' - 0"	8	Z6	3	# 7	7	8' - 1"	8' - 11"	55
N9	1	# 7	1	11' - 4"	14' - 9"	30	S14	1	# 4	6	4' - 1"	11' - 4"	8	Z7	3	# 7	7	7' - 9"	8' - 7"	53
N10	1	# 7	1	11' - 1"	14' - 6"	30	S15	1	# 4	6	3' - 8"	10' - 8"	7	Z8	3	# 7	7	7' - 6"	8' - 4"	51
N11	1	# 7	1	10' - 10"	14' - 3"	29	S16	1	# 4	6	3' - 4"	9' - 10"	7	Z9	3	# 7	7	7' - 3"	8' - 1"	50
N12	1	# 7	1	10' - 7"	14' - 0"	29	S17	1	# 4	6	3' - 0"	9' - 2"	6	Z10	6	# 7	7	9' - 6"	10' - 4"	127
N13	1	# 7	1	10' - 4"	13' - 9"	28	S18	1	# 4	6	2' - 7"	8' - 4"	6	Z11	12	# 7	7	9' - 3"	10' - 1"	247
N14	1	# 7	1	10' - 1"	13' - 6"	28	S19	1	# 4	6	2' - 3"	7' - 8"	5	Z12	12	# 7	7	9' - 0"	9' - 10"	241
N15	1	# 7	1	9' - 11"	13' - 4"	27	S20	1	# 4	6	1' - 11"	7' - 0"	5	Z13	12	# 7	7	8' - 8"	9' - 6"	233
N16	1	# 7	1	9' - 8"	13' - 1"	27	S21	1	# 4	6	1' - 6"	6' - 2"	4	Z14	12	# 7	7	8' - 5"	9' - 3"	227
N17	1	# 7	1	9' - 5"	12' - 10"	26	T1	6	# 5	STR	-	13' - 6"	84	Z15	12	# 7	7	8' - 2"	9' - 0"	221
N18	1	# 7	1	9' - 2"	12' - 7"	26	T2	6	# 5	STR	-	40' - 0"	250	Z16	12	# 7	7	7' - 11"	8' - 9"	215
N19	1	# 7	1	8' - 11"	12' - 4"	25	T3	2	# 5	STR	-	13' - 2"	27	Z17	5	# 10	STR	-	8' - 8"	186
N20	1	# 7	1	8' - 9"	12' - 2"	25	V1	2	# 4	STR	-	12' - 1"	16	Z18	3	# 10	STR	-	9' - 1"	117
N21	1	# 7	1	8' - 6"	11' - 11"	24	V2	1	# 4	STR	-	11' - 8"	8	Z19	3	# 10	STR	-	9' - 4"	120
N22	1	# 7	1	8' - 3"	11' - 8"	24	V3	1	# 4	STR	-	11' - 3"	8	Z20	3	# 10	STR	-	9' - 8"	125
N23	1	# 7	1	8' - 0"	11' - 5"	23	V4	1	# 4	STR	-	10' - 9"	7	Z21	3	# 10	STR	-	10' - 0"	129
N24	1	# 7	1	7' - 9"	11' - 2"	23	V5	1	# 4	STR	-	10' - 4"	7	Z22	3	# 10	STR	-	10' - 3"	132
N25	1	# 7	1	7' - 7"	11' - 0"	22	V6	1	# 4	STR	-	9' - 10"	7	Z23	7	# 10	STR	-	9' - 7"	289
N26	2	# 7	1	13' - 6"	16' - 11"	69	V7	1	# 4	STR	-	9' - 5"	6	REINFORCING STEEL FOR BARREL AND WINGS						9,205 LBS
N27	5	# 7	1	13' - 4"	16' - 9"	171	V8	1	# 4	STR	-	8' - 11"	6	CLASS A CONCRETE						
N28	8	# 7	1	13' - 1"	16' - 6"	270	V9	1	# 4	STR	-	8' - 6"	6	2 WINGWALLS						67.4 C.Y.
													1 END CURTAIN WALL						1.8 C.Y.	
													TOTAL						69.2 C.Y.	



DETAIL OF REINFORCING AROUND 48" Ø PIPE

PROJECT NO. U-2579AB
 FORSYTH COUNTY
 STATION: 768+62.23 -L-
 SHEET 8 OF 11

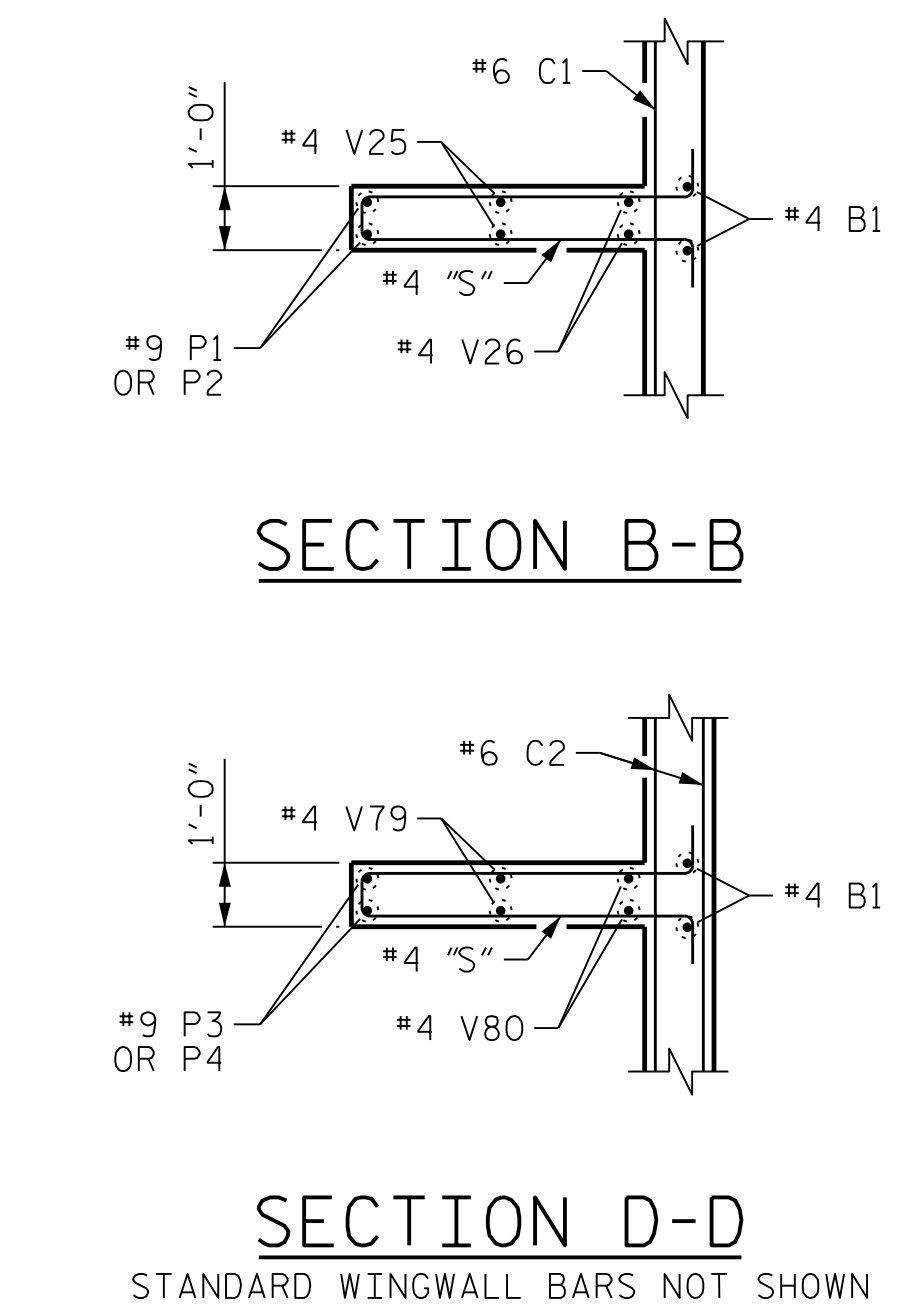
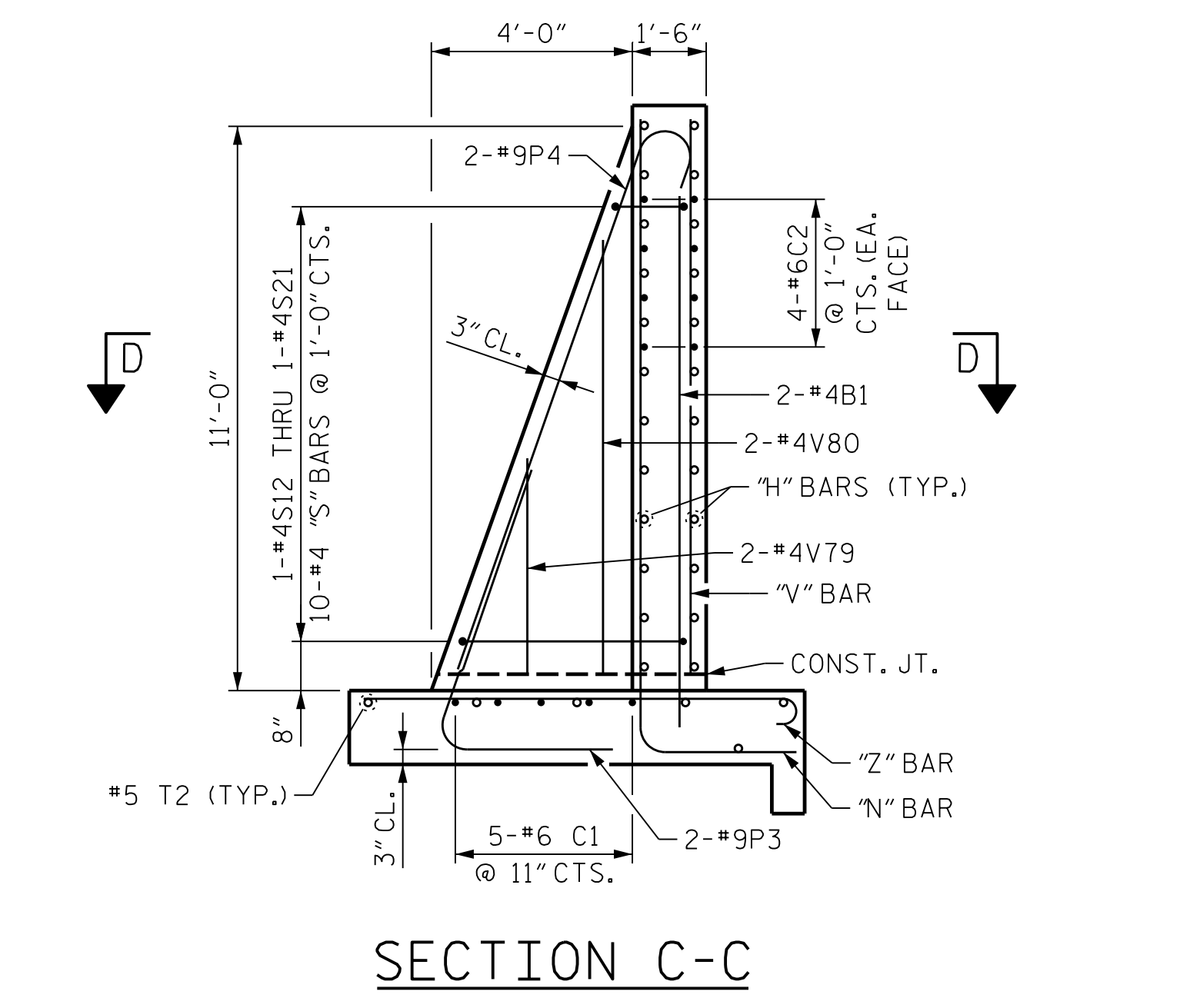
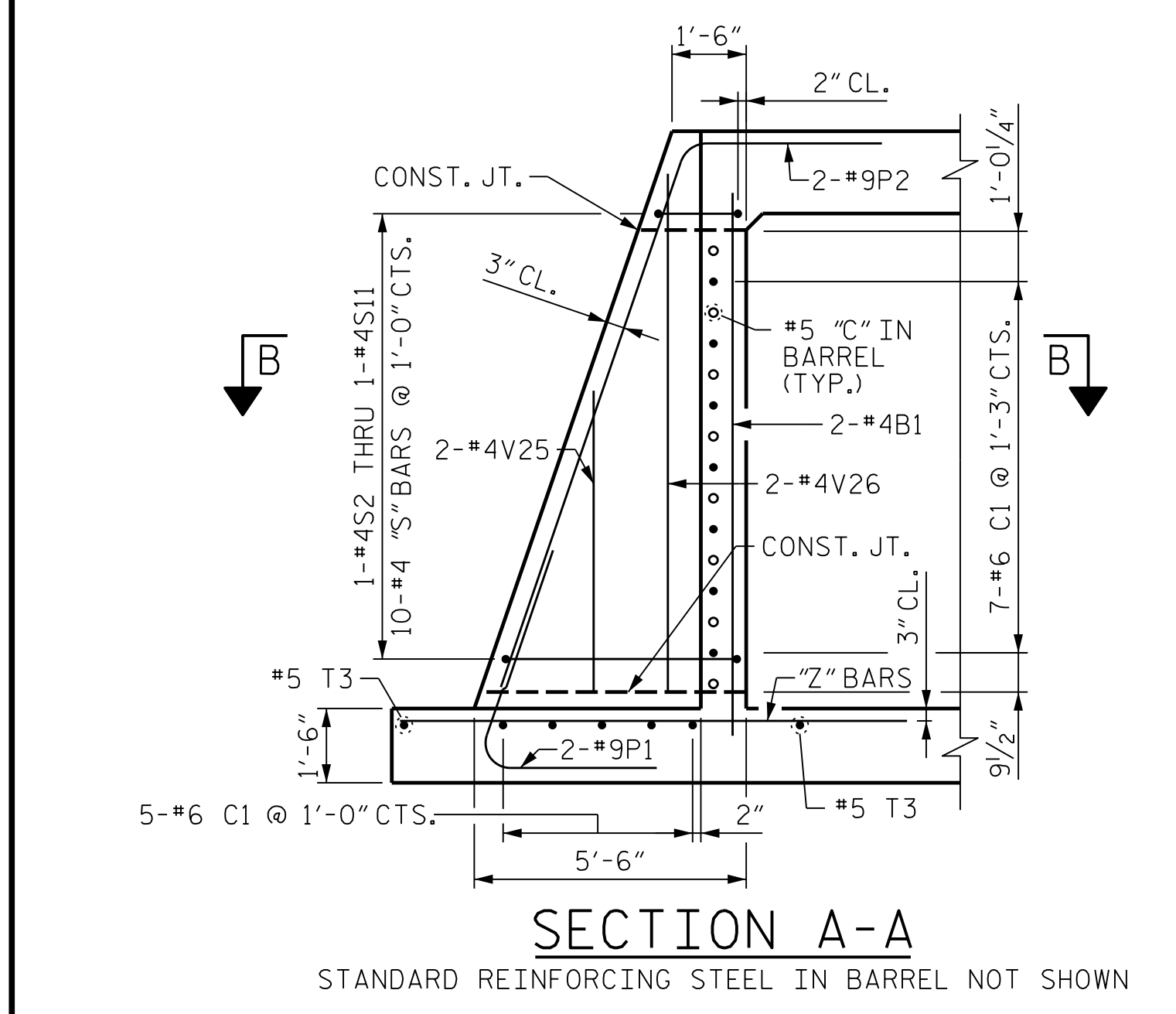
STATE OF NORTH CAROLINA
 DEPARTMENT OF TRANSPORTATION
 RALEIGH

WINGS FOR CONCRETE BOX CULVERT
 45° SKEW



10/11/2021

REVISIONS						SHEET NO. CI-8	
NO.	BY:	DATE:	NO.	BY:	DATE:	TOTAL SHEETS 11	
1			3				
2			4				



DES BY: T. MCALEENAN	DATE: 09/19	DWG BY: T. MCALEENAN	DATE: 09/19
DES CHK: R. TURNAGE	DATE: 09/19	CHK BY: R. TURNAGE	DATE: 09/19

HDR Engineering, Inc. of the Carolinas
 555 Fayetteville St., Suite 900 Raleigh, N.C. 27601
 N.C.B.E.L.S. License Number: P-0116

DOCUMENT NOT CONSIDERED FINAL
 UNLESS ALL SIGNATURES COMPLETED

PLOT DRIVER: NCDOT STRUCTURES DEFAULT PLOTTER.PHT
 USER: PPRETOSO
 DATE: 5/20/2021
 TIME: 9:55:01 AM
 FILE: ...N.BILL OF MATERIALS (WINGS 1 & 2)