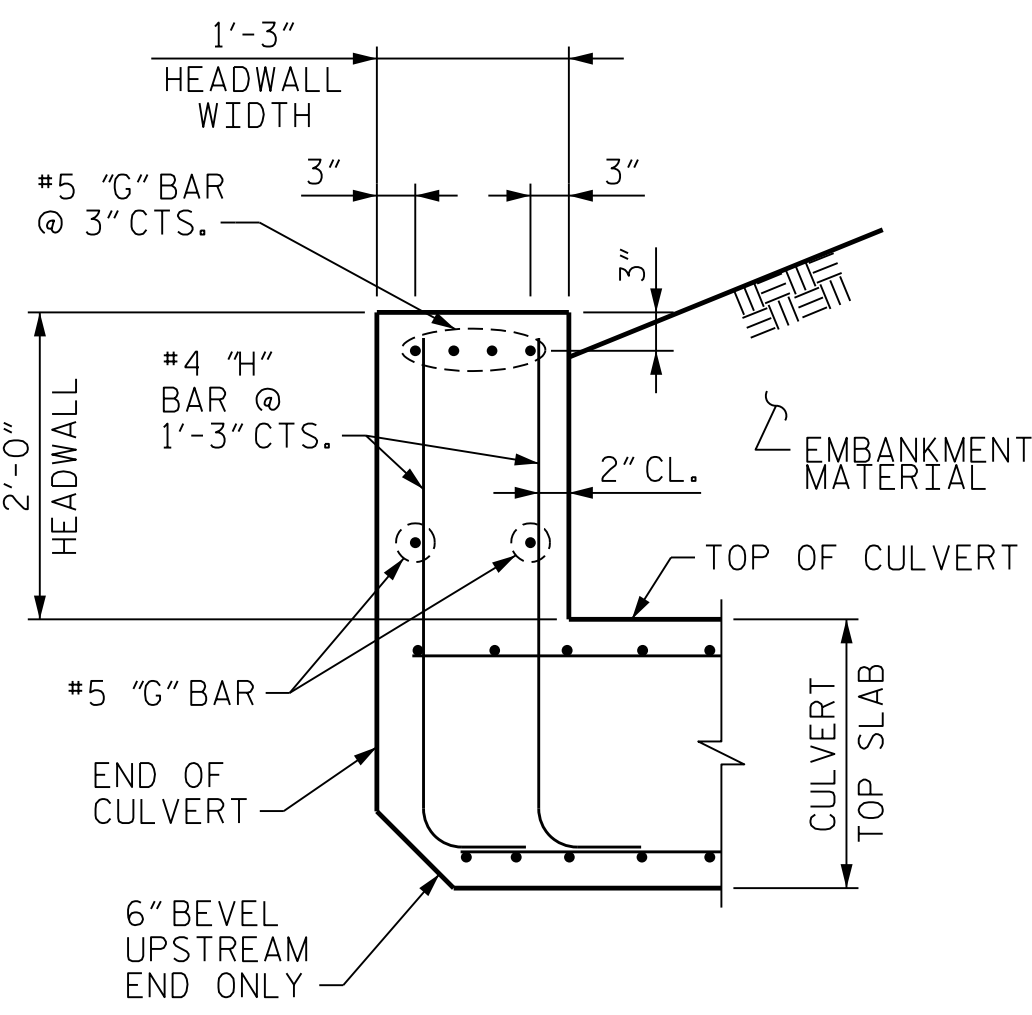
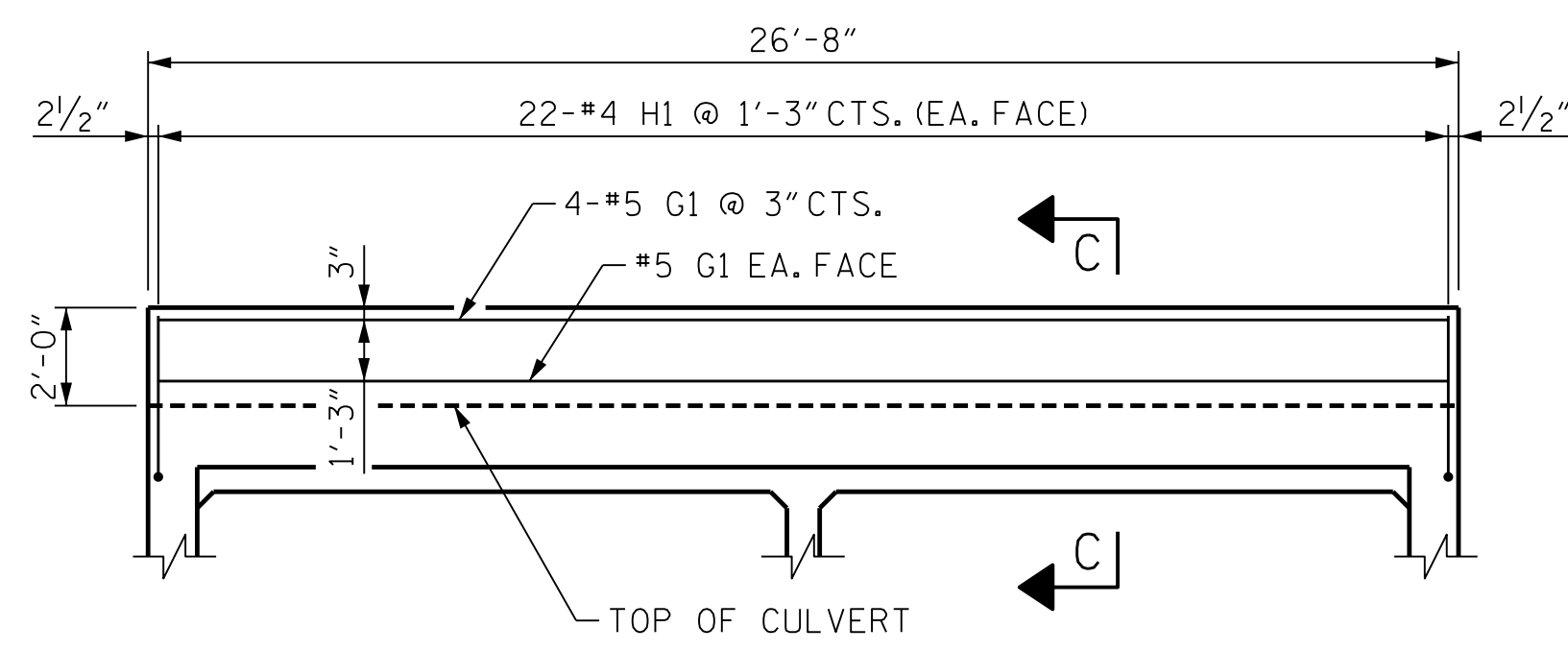


RIGHT ANGLE SECTION OF BARREL

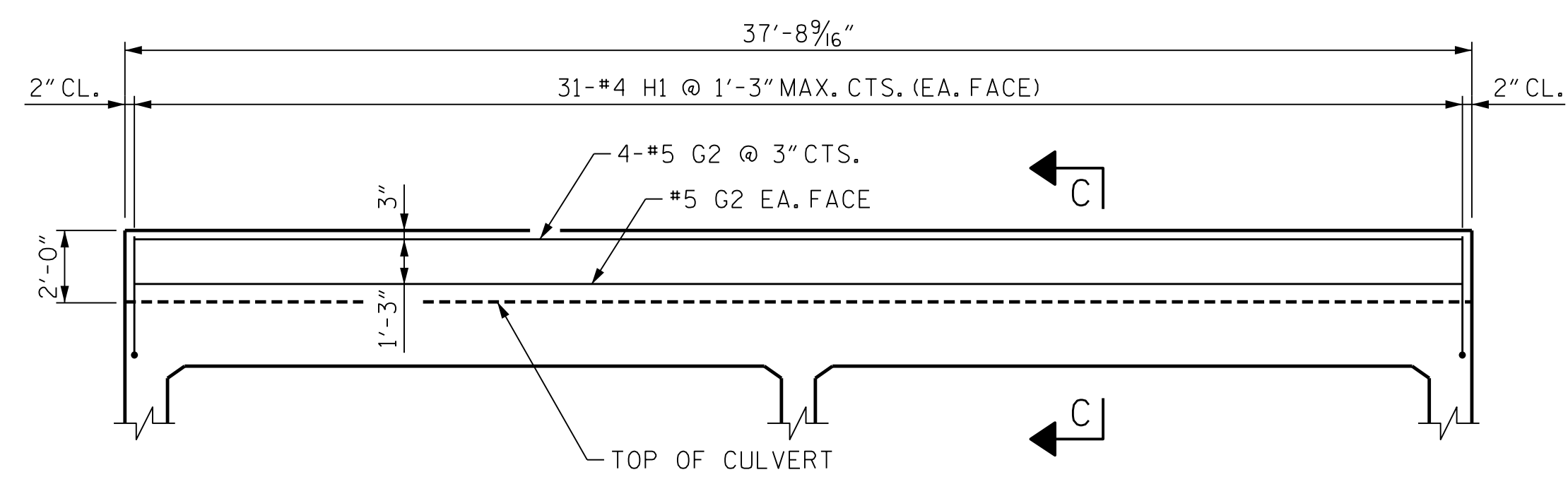
THERE ARE 162 "C" BARS IN SECTION
 * ALL CONTINUOUS HIGH CHAIR UPPER (C.H.C.U.) AND STANDEE BARS @ 3'-0" CTS.



SECTION C-C



VIEW A-A

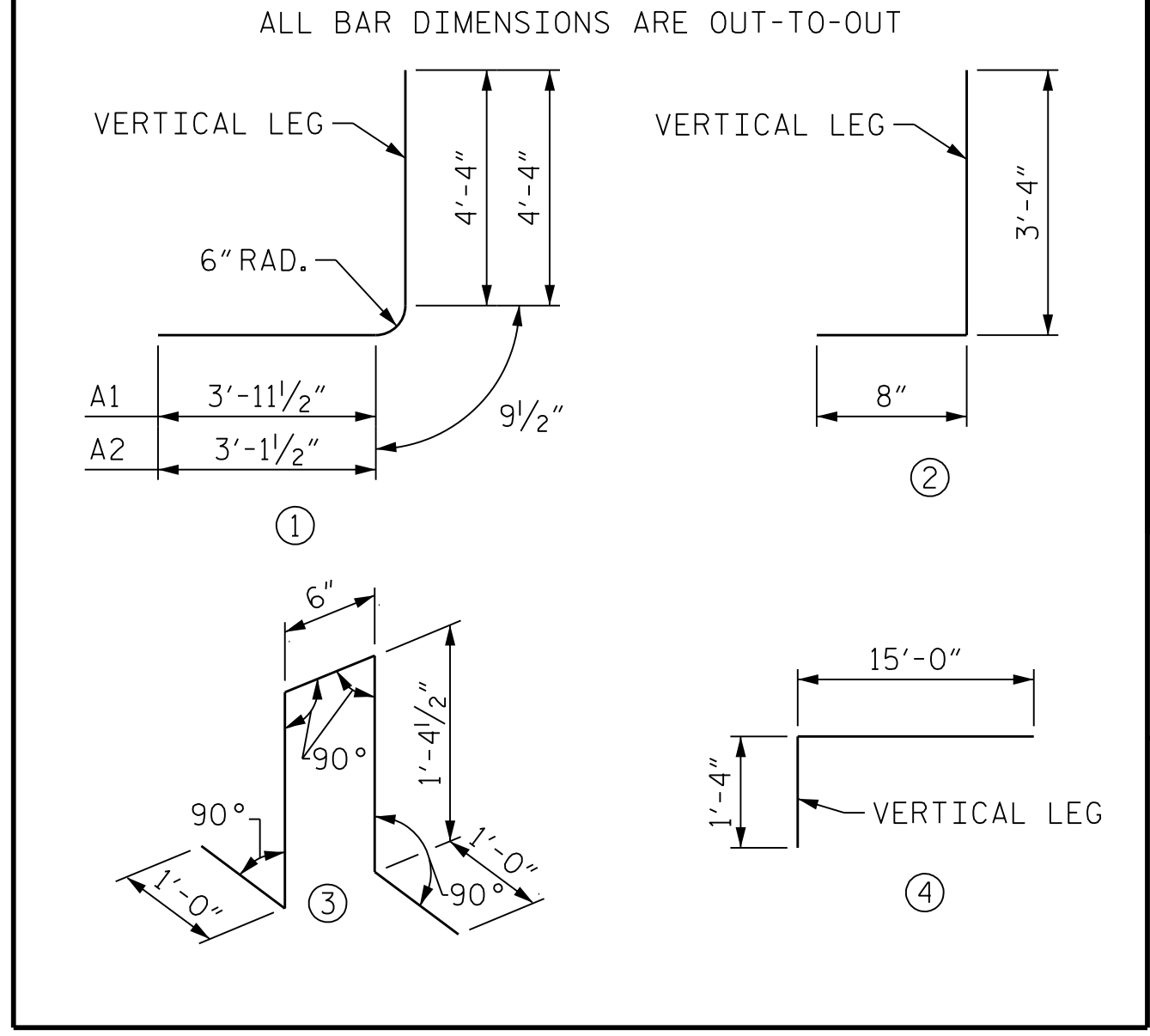


VIEW B-B

REINFORCING STEEL BAR SCHEDULE

BAR	NO.	SIZE	TYPE	LENGTH	WEIGHT	BAR	NO.	SIZE	TYPE	LENGTH	WEIGHT
A1	2258	# 6	1	9' - 1"	30806	A300	1102	# 7	STR	26' - 3"	59128
A2	2258	# 6	1	8' - 3"	27980	A301	3	# 7	STR	24' - 9"	152
A100	735	# 7	STR	26' - 3"	39436	A302	3	# 7	STR	23' - 3"	143
A101	2	# 7	STR	24' - 9"	101	A303	3	# 7	STR	21' - 9"	133
A102	2	# 7	STR	23' - 3"	95	A304	3	# 7	STR	20' - 3"	124
A103	2	# 7	STR	21' - 9"	89	A305	3	# 7	STR	18' - 9"	115
A104	2	# 7	STR	20' - 3"	83	A306	3	# 7	STR	17' - 3"	106
A105	2	# 7	STR	18' - 9"	77	A307	3	# 7	STR	15' - 9"	97
A106	2	# 7	STR	17' - 3"	71	A308	3	# 7	STR	14' - 3"	87
A107	2	# 7	STR	15' - 9"	64	A309	3	# 7	STR	12' - 9"	78
A108	2	# 7	STR	14' - 3"	58	A310	3	# 7	STR	11' - 3"	69
A109	2	# 7	STR	12' - 9"	52	A311	3	# 7	STR	9' - 9"	60
A110	2	# 7	STR	11' - 3"	46	A312	3	# 7	STR	8' - 3"	51
A111	2	# 7	STR	9' - 9"	40	A313	3	# 7	STR	6' - 9"	41
A112	2	# 7	STR	8' - 3"	34	A314	3	# 7	STR	5' - 3"	32
A113	2	# 7	STR	6' - 9"	28	A400	1102	# 7	STR	26' - 3"	59128
A114	2	# 7	STR	5' - 3"	21	A401	3	# 7	STR	24' - 9"	152
A115	2	# 7	STR	3' - 9"	15	A402	3	# 7	STR	23' - 3"	143
A116	2	# 7	STR	2' - 3"	9	A403	3	# 7	STR	21' - 9"	133
A200	735	# 7	STR	26' - 3"	39436	A404	3	# 7	STR	20' - 3"	124
A201	2	# 7	STR	24' - 9"	101	A405	3	# 7	STR	18' - 9"	115
A202	2	# 7	STR	23' - 3"	95	A406	3	# 7	STR	17' - 3"	106
A203	2	# 7	STR	21' - 9"	89	A407	3	# 7	STR	15' - 9"	97
A204	2	# 7	STR	20' - 3"	83	A408	3	# 7	STR	14' - 3"	87
A205	2	# 7	STR	18' - 9"	77	A409	3	# 7	STR	12' - 9"	78
A206	2	# 7	STR	17' - 3"	71	A410	3	# 7	STR	11' - 3"	69
A207	2	# 7	STR	15' - 9"	64	A411	3	# 7	STR	9' - 9"	60
A208	2	# 7	STR	14' - 3"	58	A412	3	# 7	STR	8' - 3"	51
A209	2	# 7	STR	12' - 9"	52	A413	3	# 7	STR	6' - 9"	41
A210	2	# 7	STR	11' - 3"	46	A414	3	# 7	STR	5' - 3"	32
A211	2	# 7	STR	9' - 9"	40						
A212	2	# 7	STR	8' - 3"	34	B1	2258	# 5	STR	13' - 4"	31401
A213	2	# 7	STR	6' - 9"	28	B2	2258	# 6	STR	9' - 2"	31089
A214	2	# 7	STR	5' - 3"	21	B3	2258	# 5	STR	13' - 4"	31401
A215	2	# 7	STR	3' - 9"	15						
A216	2	# 7	STR	2' - 3"	9						
						C1	1782	# 5	STR	55' - 3"	102689
						D1	7	# 6	STR	3' - 7"	38
						G1	6	# 5	STR	26' - 3"	164
						G2	6	# 5	STR	37' - 2"	233
						H1	53	# 4	2	4' - 0"	142
						K1	1692	# 4	3	5' - 3"	5934
						M1	5	# 8	4	16' - 4"	218
						S2	6	# 8	STR	37' - 2"	595

BAR TYPES



SPLICE LENGTH CHART

BAR	SIZE	SPLICE
B1, B3	#5	2'-4"
C1	#5	3'-0"
S2	#8	4'-9"
A200-A214	#7	4'-2"
A400-A414	#7	3'-2"



PROJECT NO. U-2579AB
 FORSYTH COUNTY
 STATION: 768+62.23 -L-
 SHEET 6 OF 11

STATE OF NORTH CAROLINA
 DEPARTMENT OF TRANSPORTATION
 RALEIGH
DOUBLE BARREL
12 FT. X 10 FT.
CONCRETE BOX CULVERT
60° 45' 00" SKEW

REVISIONS

NO.	BY:	DATE:	NO.	BY:	DATE:
1			3		
2			4		

SHEET NO. C1-6
 TOTAL SHEETS 11

PLOT DRIVER: NCDOT STRUCTURES DEFAULT PLOTTER.plt
 USER: PETERSON DATE: 5/20/2021
 FILE: ... \BILL OF MATERIALS (BARREL)

DES BY: T. MCALEENAN DATE: 09/19 DWG BY: T. MCALEENAN DATE: 09/19
 DES CHK: R. TURNAGE DATE: 09/19 CHK BY: R. TURNAGE DATE: 09/19

HDR HDR Engineering, Inc. of the Carolinas
 555 Fayetteville St., Suite 900 Raleigh, N.C. 27601
 N.C.B.E.L.S. License Number: F-0116

Dominic A. Coletti 10/11/2021
DOCUMENT NOT CONSIDERED FINAL
UNLESS ALL SIGNATURES COMPLETED