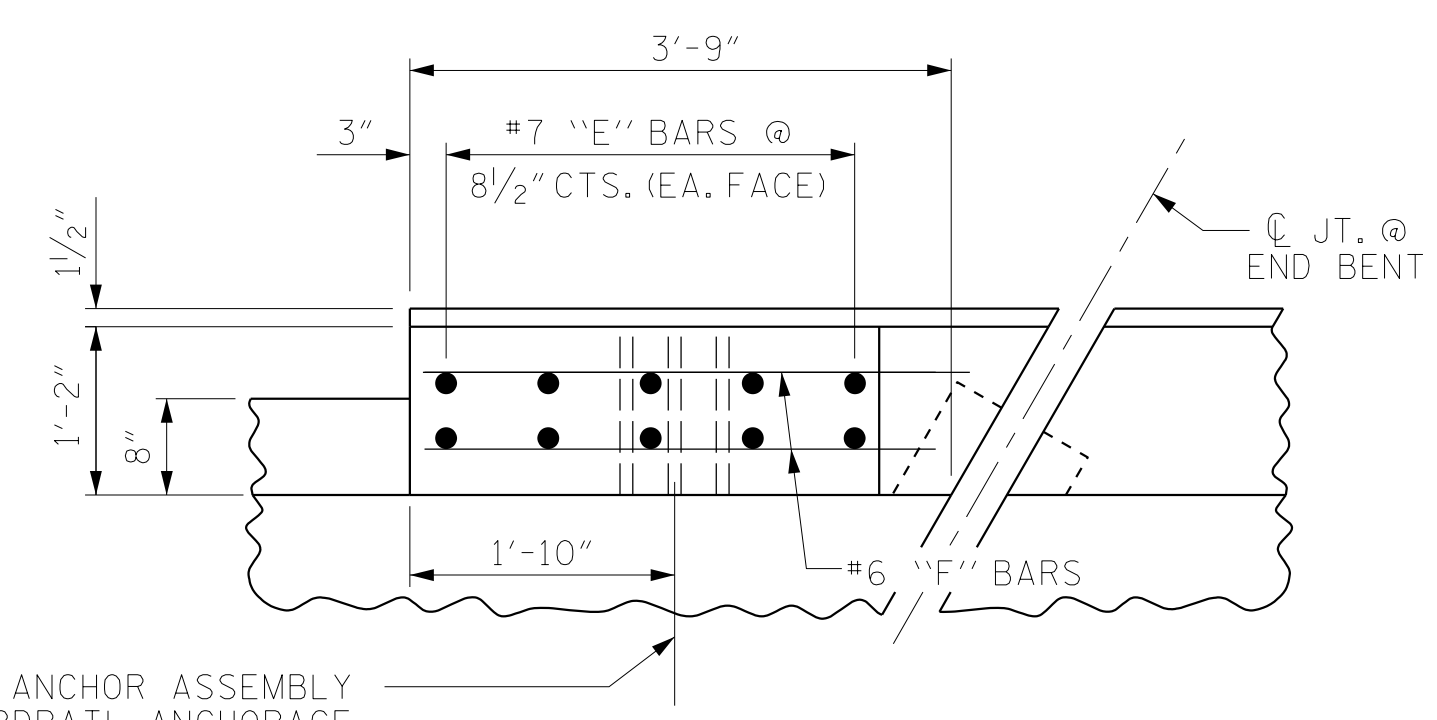
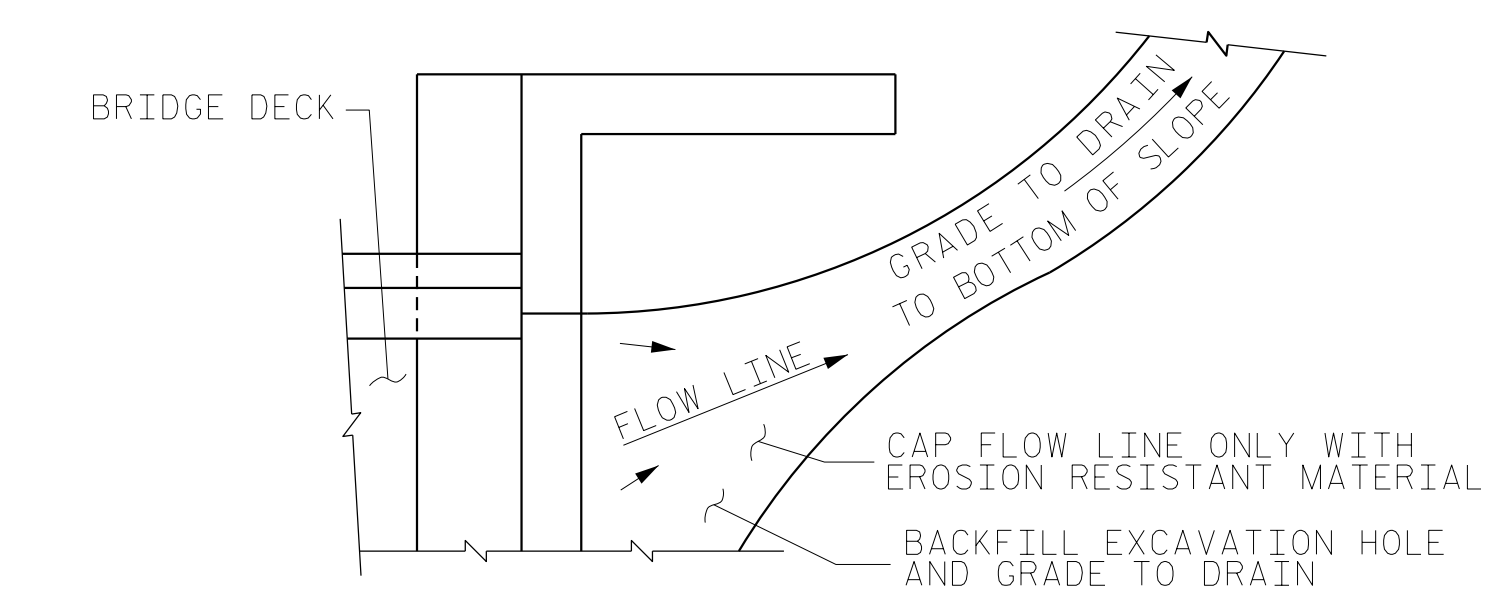


PLAN OF PARAPET

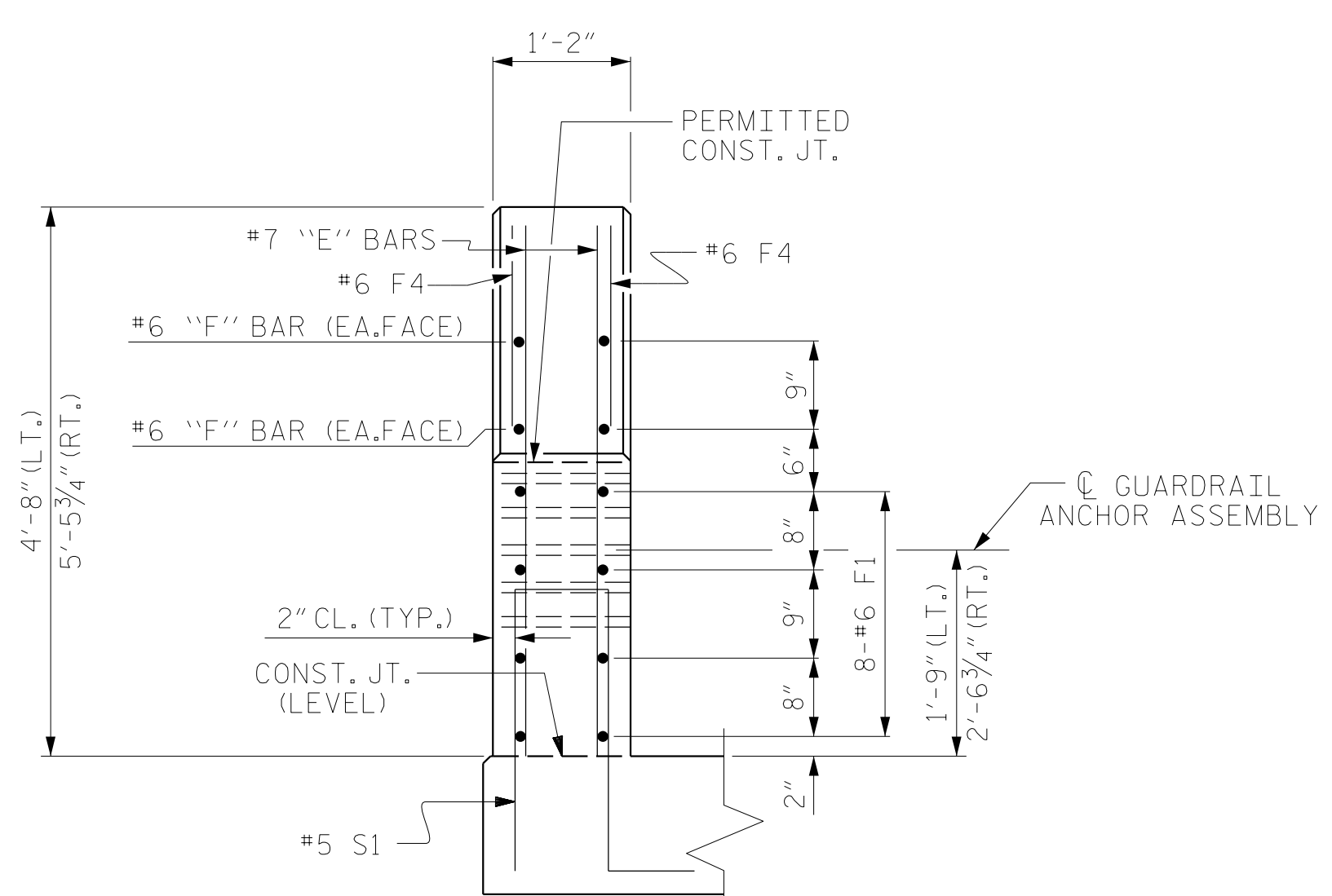


PLAN OF END POST

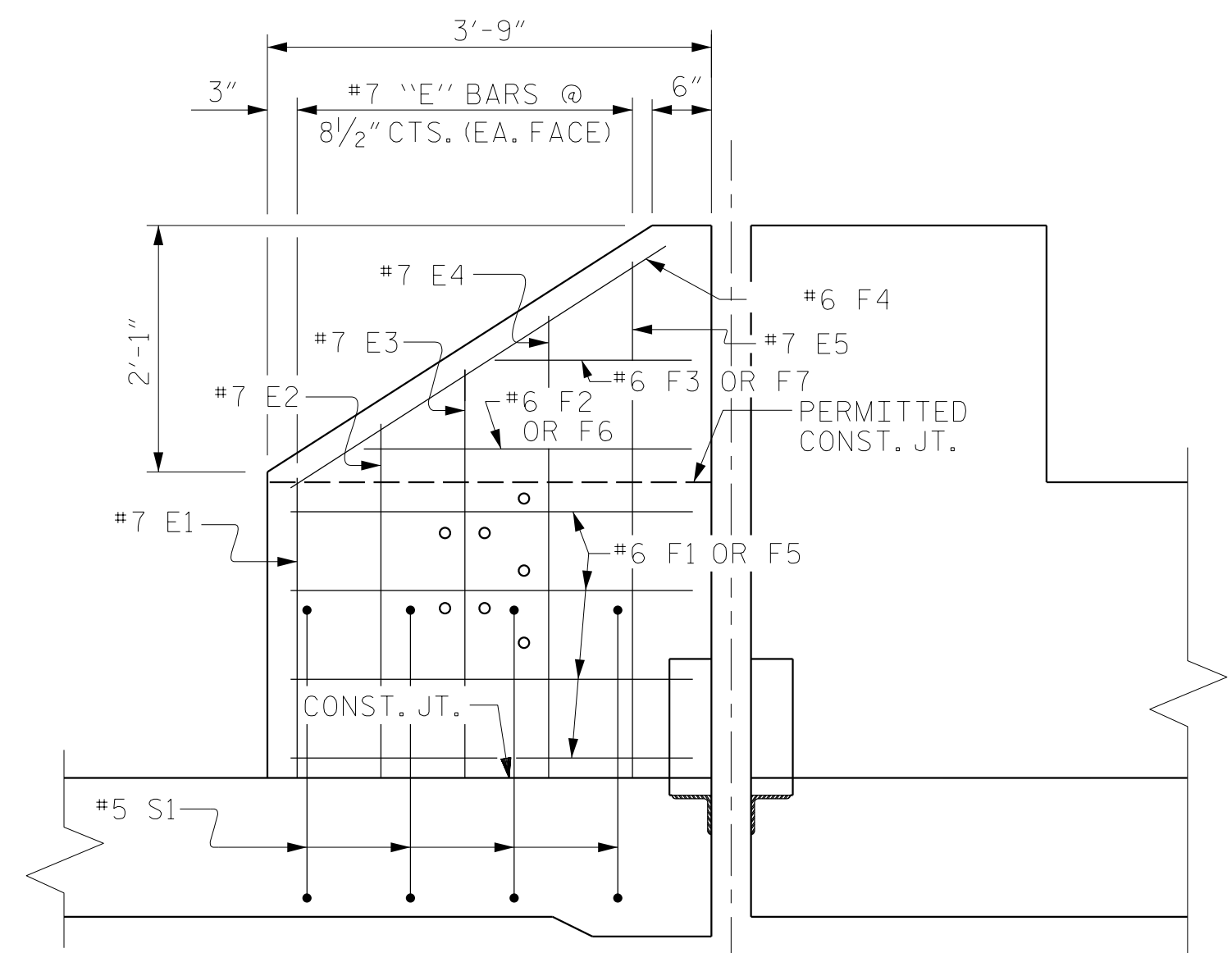


NOTE: IF THE APPROACH SLAB IS NOT CONSTRUCTED IMMEDIATELY AFTER THE BACKFILLING OF THE END BENT EXCAVATION, GRADE TO DRAIN TO THE BOTTOM OF THE SLOPE AND PROVIDE EROSION RESISTANT MATERIAL, SUCH AS FIBERGLASS ROVING OR AS DIRECTED BY THE ENGINEER TO PREVENT SOIL EROSION AND TO PROTECT THE AREA ADJACENT TO THE STRUCTURE. THE CONTRACTOR WILL BE REQUIRED TO REMOVE THESE MATERIALS PRIOR TO CONSTRUCTION OF THE APPROACH SLAB.

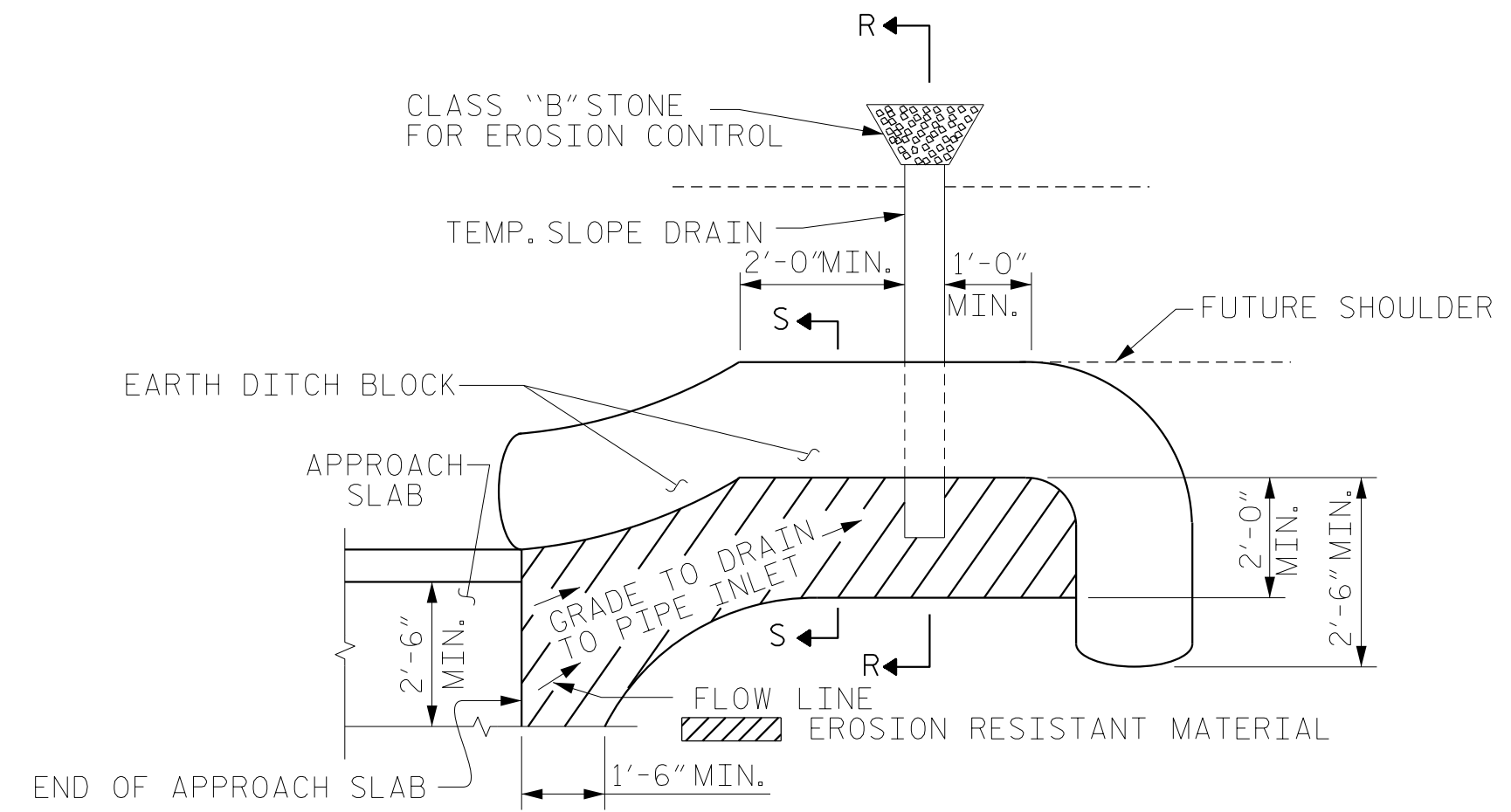
TEMPORARY DRAINAGE DETAIL



END VIEW

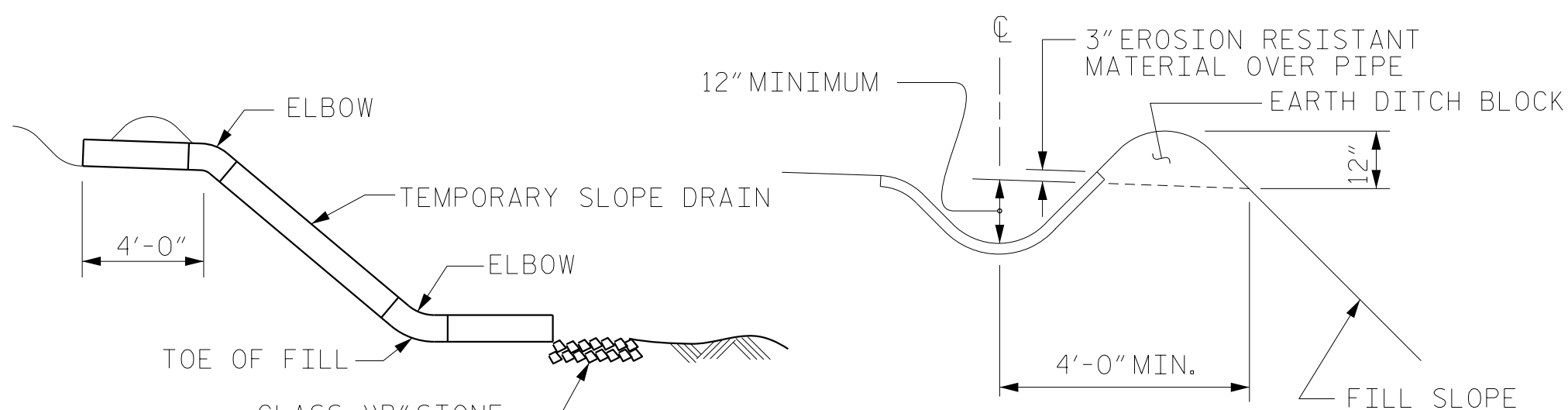


ELEVATION



PLAN VIEW

NOTE: IMMEDIATELY AFTER THE CONSTRUCTION OF THE APPROACH SLAB, THE CONTRACTOR SHALL PROVIDE TEMPORARY BERM AND SLOPE DRAIN. CONTRACTOR SHALL GRADE TO PIPE INLET AND PROVIDE EROSION RESISTANT MATERIAL AS SHOWN. THE EROSION RESISTANT MATERIAL SHALL BE EITHER 1) ASPHALT PLANT MIX, TYPE 1 OR TYPE 2, MIN. 2" DEPTH, 2) EROSION CONTROL MAT, OR 3) CONCRETE, AS DIRECTED BY THE ENGINEER. THE SLOPE DRAIN SHALL CONSIST OF A NON-PERFORATED TEMPORARY DRAINAGE PIPE, 12 INCHES IN DIAMETER.



TEMPORARY BERM AND SLOPE DRAIN DETAILS

(TO BE USED WHEN SHOULDER BERM GUTTER IS REQUIRED)

NOTES

THE COST OF THE END POST ON THE APPROACH SLAB SHALL BE INCLUDED IN THE LINEAR FOOT CONTRACT PRICE BID FOR CONCRETE PARAPET.

THE SIDEWALK AND END POST ON EACH APPROACH SLAB SHALL NOT BE CAST UNTIL ALL APPROACH SLAB CONCRETE HAS BEEN CAST AND HAS REACHED A MINIMUM COMPRESSIVE STRENGTH OF 3,000 PSI.

GROOVED CONTRACTION JOINTS, 1/2" IN DEPTH, SHALL BE TOOLED IN ALL EXPOSED FACES OF THE SIDEWALK IN ACCORDANCE WITH ARTICLE 825-10(B) OF THE STANDARD SPECIFICATIONS. THE CONTRACTION JOINTS SHALL BE LOCATED AT A SPACING OF 8 FT. TO 10 FT. BETWEEN EXPANSION JOINTS. NO CONTRACTION JOINTS WILL BE REQUIRED FOR SEGMENTS LESS THAN 10 FT. IN LENGTH.

ALL REINFORCING STEEL IN END POSTS AND SIDEWALK SHALL BE EPOXY COATED.

DOCUMENT NOT CONSIDERED FINAL UNLESS ALL SIGNATURES COMPLETED

BAR TYPES

ALL BAR DIMENSIONS ARE OUT TO OUT

BILL OF MATERIAL FOR 4 END POSTS

BAR NO.	NO.	SIZE	TYPE	LENGTH	WEIGHT
*E1	8	#7	STR	2'-6"	41
*E2	8	#7	STR	2'-11"	48
*E3	8	#7	STR	3'-5"	56
*E4	8	#7	STR	3'-10"	63
*E5	8	#7	STR	4'-4"	71
*F1	16	#6	STR	3'-5"	82
*F2	4	#6	STR	2'-5"	15
*F3	4	#6	STR	1'-4"	8
*F4	8	#6	STR	3'-8"	44
*F5	16	#6	STR	4'-7"	110
*F6	4	#6	STR	3'-7"	22
*F7	4	#6	STR	2'-6"	15
*S1	16	#5	1	7'-4"	122

*EPOXY COATED REINFORCING STEEL	697 LBS.
CLASS AA CONCRETE	2.7 CU.YDS.
1'-2" X 2'-6 3/4" CONCRETE PARAPET	9.3 LIN. FT.
1'-2" X 3'-3 3/4" CONCRETE PARAPET	9.3 LIN. FT.

SIDEWALK @ END BENT 1

BAR NO.	NO.	SIZE	TYPE	LENGTH	WEIGHT
*B11	8	#4	STR	14'-0"	75
*G1	15	#4	STR	12'-2"	122
*U1	6	#4	2	4'-8"	19

*EPOXY COATED REINFORCING STEEL	216 LBS.
CLASS AA CONCRETE	2.7 CU.YDS.

SIDEWALK @ END BENT 2

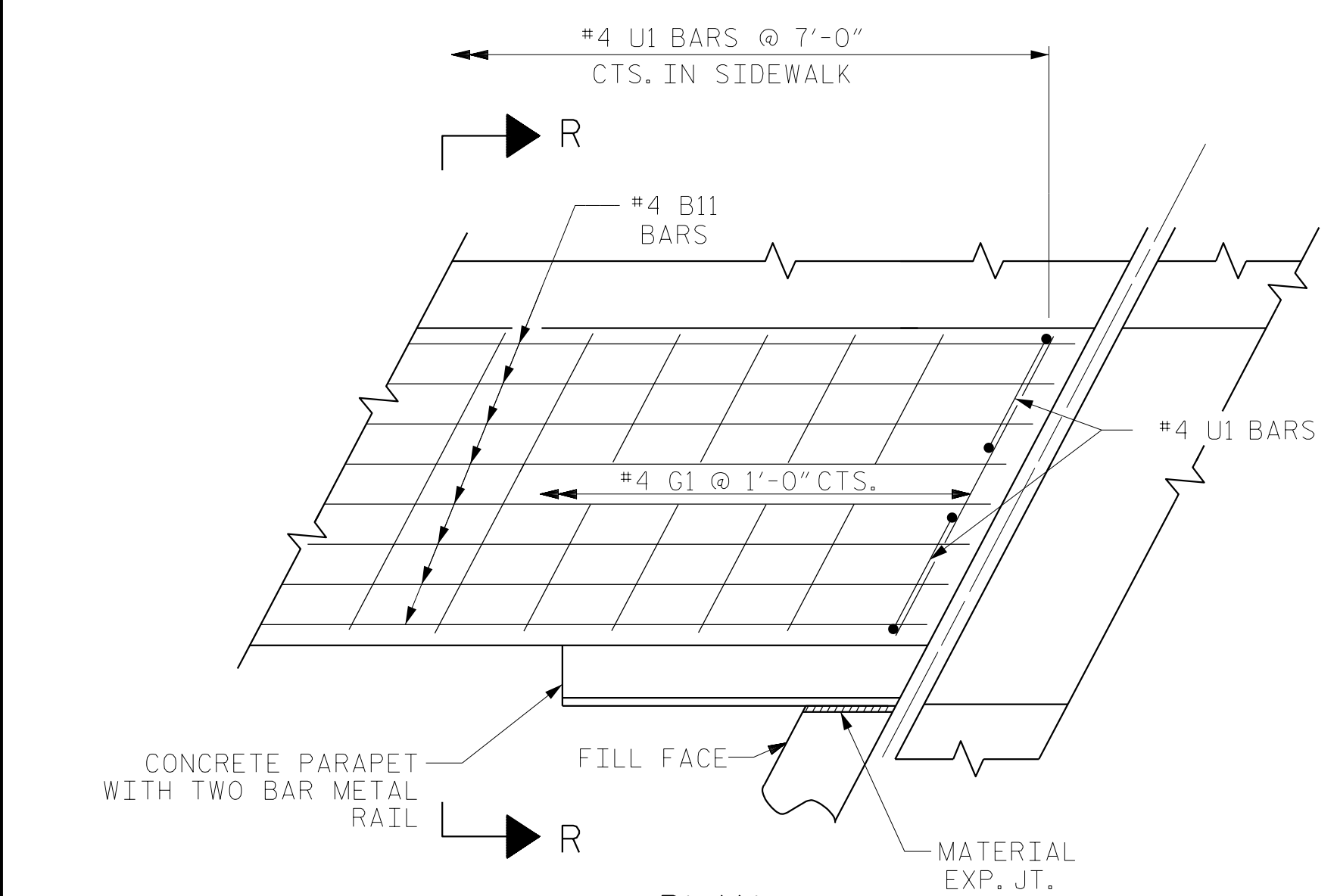
BAR NO.	NO.	SIZE	TYPE	LENGTH	WEIGHT
*B11	8	#4	STR	14'-0"	75
*G1	15	#4	STR	12'-2"	122
*U1	6	#4	2	4'-8"	19

*EPOXY COATED REINFORCING STEEL	216 LBS.
CLASS AA CONCRETE	2.7 CU.YDS.

PROJECT NO. U-2579AB
 FORSYTH COUNTY
 STATION: 23+43.03 -Y16-

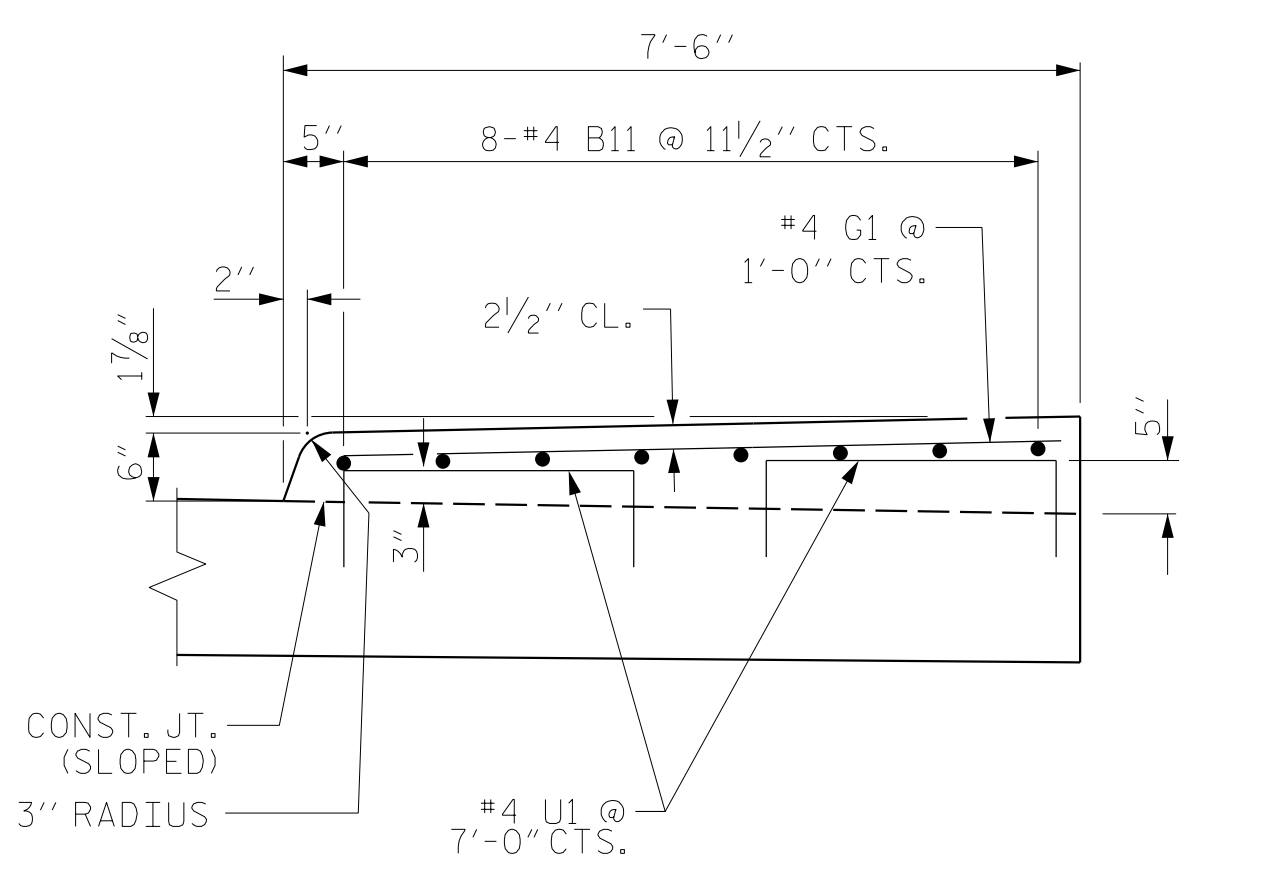
SHEET 2 OF 2

REVISIONS						SHEET NO.
NO.	BY:	DATE:	NO.	BY:	DATE:	S7-48
1			3			TOTAL SHEETS
2			4			48



PLAN

END BENT 1 SHOWN, END BENT 2 SIMILAR



SECTION R-R

U1 BARS MAY BE PUSHED INTO GREEN CONCRETE AFTER SLAB HAS BEEN SCREEDED OFF

DETAILS OF SIDEWALK ON APPROACH SLAB

ASSEMBLED BY : TWL	DATE : 08/2019
CHECKED BY : JMR	DATE : 01/2020
DRAWN BY : FCJ 11/88	REV. 6/13 MAA/GM
CHECKED BY : ARB 11/88	REV. 12/17 MAA/THC
	REV. 5/18 MAA/THC