

PLAN @ END BENT 1
 PLAN @ END BENT 2
 DIMENSIONS SHOWN ARE TYPICAL FOR BOTH APPROACH SLABS

NOTES

FOR BRIDGE APPROACH FILL INCLUDING GEOTEXTILE, 6" Ø DRAINAGE PIPE, AND SELECT MATERIAL BACKFILL, SEE ROADWAY PLANS.

GEOTEXTILE SHALL BE TYPE 1 IN ACCORDANCE WITH THE STANDARD SPECIFICATIONS SECTION 1056.

SELECT MATERIAL BACKFILL (CLASS V OR CLASS VI) SHALL BE IN ACCORDANCE WITH STANDARD SPECIFICATIONS SECTION 1016.

SELECT MATERIAL BACKFILL IS TO BE CONTINUOUS ALONG FILL FACE OF BACKWALL FROM OUTSIDE EDGE TO OUTSIDE EDGE OF APPROACH SLAB.

APPROACH SLAB SHALL NOT BE CONSTRUCTED PRIOR TO COMPLETION OF THE BRIDGE DECK.

FOR THE 6" Ø DRAINAGE PIPE OUTLET(S), SEE ROADWAY STANDARD DRAWINGS.

AREA BETWEEN THE WINGWALL AND APPROACH SLAB SHALL BE GRADED TO DRAIN THE WATER AWAY FROM THE FILL FACE OF THE BRIDGE AND SHALL BE PAVED. SEE ROADWAY PLANS.

FOR EXPANSION JOINT SEALS, SEE SPECIAL PROVISIONS.

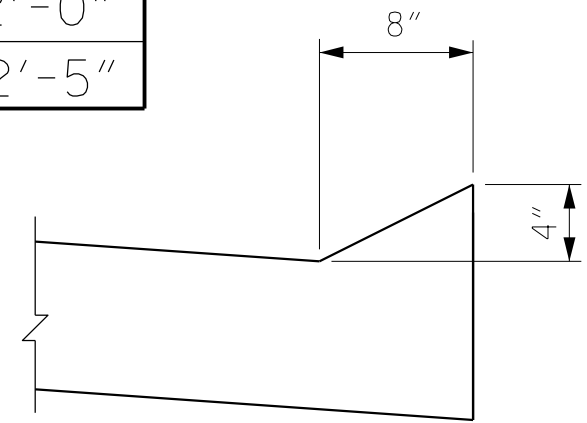
FOR SIDEWALK REINFORCING, SEE SHEET 2 OF 2.

THE QUANTITY OF #4 J1 BARS ON THE BILL OF MATERIAL IS BASED ON 1'-0" CENTERS. J1 BARS SHALL BE PLACED AT EACH VERTICAL STUD ANCHOR BOLT. IN THE EVENT THAT THE NUMBER OF VERTICAL STUD ANCHORS EXCEEDS THE NUMBER OF J1 BARS SPECIFIED, ADDITIONAL J1 BARS WILL NOT BE REQUIRED.

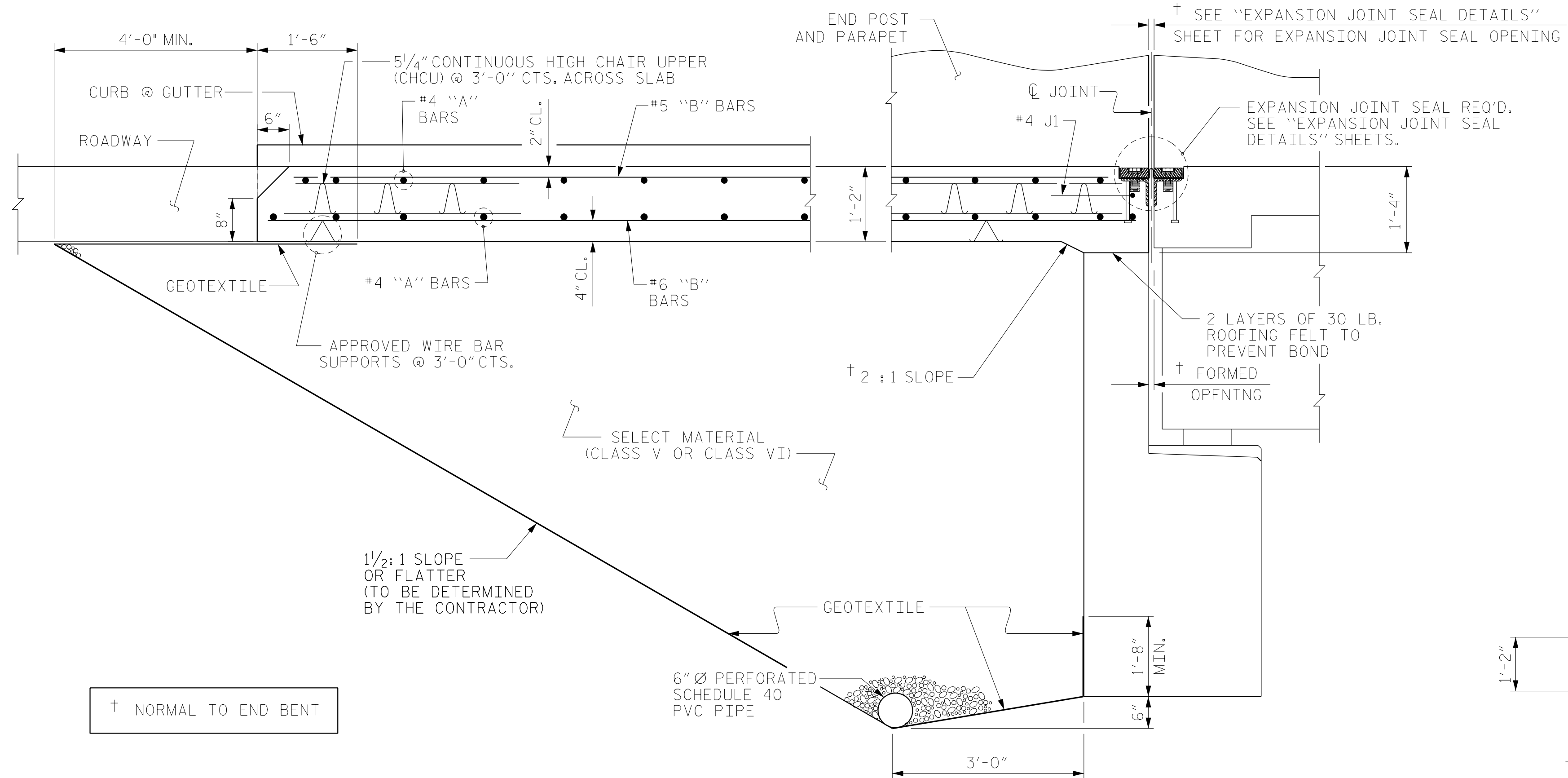
FOR SECTION R-R, SEE SHEET 2 OF 2.

SPLICE LENGTHS

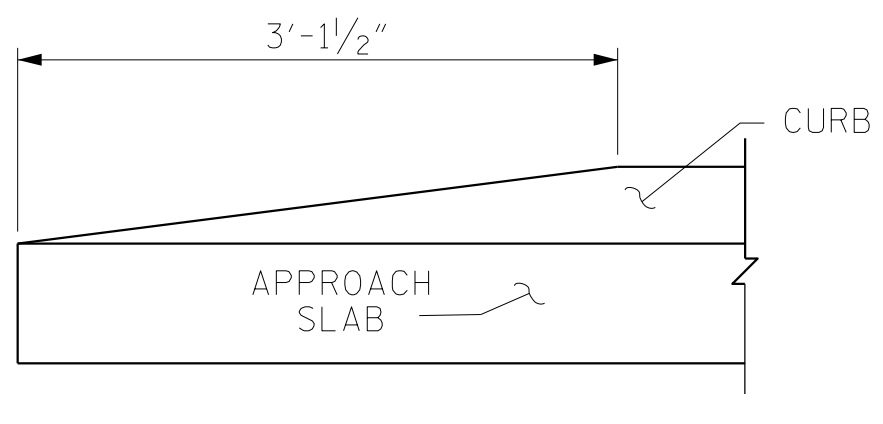
BAR SIZE	EPOXY COATED	UNCOATED
#4	1'-11"	1'-7"
#5	2'-5"	2'-0"
#6	3'-7"	2'-5"



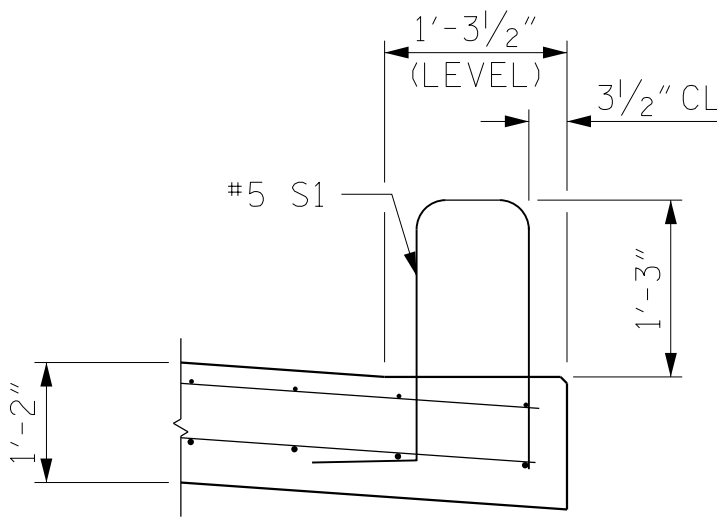
SECTION N-N



SECTION THRU SLAB
 (TYPE I - STANDARD APPROACH FILL)



END OF CURB WITHOUT SHOULDER BERM GUTTER
CURB DETAILS



SECTION K-K

BILL OF MATERIAL

APPROACH SLAB AT BENT 1

BAR	NO.	SIZE	TYPE	LENGTH	WEIGHT
*A1	30	#4	STR	31'-7"	633
A2	32	#4	STR	31'-5"	672
*B1	72	#5	STR	13'-5"	1008
B2	72	#6	STR	14'-5"	1559
*B3	1	#5	STR	3'-5"	4
B4	1	#6	STR	3'-5"	5
*B5	1	#5	STR	4'-1"	4
B6	1	#6	STR	4'-1"	6
*B7	1	#5	STR	4'-10"	5
B8	1	#6	STR	4'-10"	7
*B9	1	#5	STR	4'-6"	5
B10	1	#6	STR	4'-6"	7
*J1	65	#4	1	1'-5"	62

REINFORCING STEEL 2256 LBS.
 *EPOXY COATED REINFORCING STEEL 1721 LBS.

CLASS AA CONCRETE 24.0 C. Y.

APPROACH SLAB AT BENT 2

BAR	NO.	SIZE	TYPE	LENGTH	WEIGHT
*A1	30	#4	STR	31'-7"	633
A2	32	#4	STR	31'-5"	672
*B1	72	#5	STR	13'-5"	1008
B2	72	#6	STR	14'-5"	1559
*B3	1	#5	STR	4'-10"	5
B4	1	#6	STR	4'-10"	7
*B5	1	#5	STR	4'-1"	4
B6	1	#6	STR	4'-1"	6
*B7	1	#5	STR	3'-5"	4
B8	1	#6	STR	3'-5"	5
*B9	1	#5	STR	3'-10"	4
B10	1	#6	STR	3'-10"	6
*J1	65	#4	1	1'-5"	62

REINFORCING STEEL 2255 LBS.
 *EPOXY COATED REINFORCING STEEL 1720 LBS.

CLASS AA CONCRETE 24.0 C. Y.

BAR TYPE

ALL BAR DIMENSIONS ARE OUT TO OUT
 ** QUANTITIES FOR SIDEWALK AND END POST ARE NOT INCLUDED. SEE SHEET 2 OF 2.

PROJECT NO. U-2579AB
 FORSYTH COUNTY
 STATION: 23+43.03 -Y16-

SHEET 1 OF 2

STATE OF NORTH CAROLINA
 DEPARTMENT OF TRANSPORTATION
 RALEIGH

STANDARD
 BRIDGE APPROACH SLAB
 FOR FLEXIBLE PAVEMENT

RS&H Architects-Engineers-Planners, Inc.
 8521 Six Forks Road, Suite 400
 919-926-4100 FAX 919-846-9080
 www.rsandh.com
 North Carolina License No. 50737-0403-C&E

REVISIONS						SHEET NO.
NO.	BY:	DATE:	NO.	BY:	DATE:	SHEET NO.
1			3			57-47
2			4			TOTAL SHEETS 48

ASSEMBLED BY : TWL	DATE : 08/2019
CHECKED BY : JMR	DATE : 01/2020
DRAWN BY : EEM 3/95	REV. 6/13 MAA/GM
CHECKED BY : VAP 3/95	REV. 12/17 MAA/THC
	REV. 06/19 BNB/THC

DOCUMENT NOT CONSIDERED FINAL UNLESS ALL SIGNATURES COMPLETED