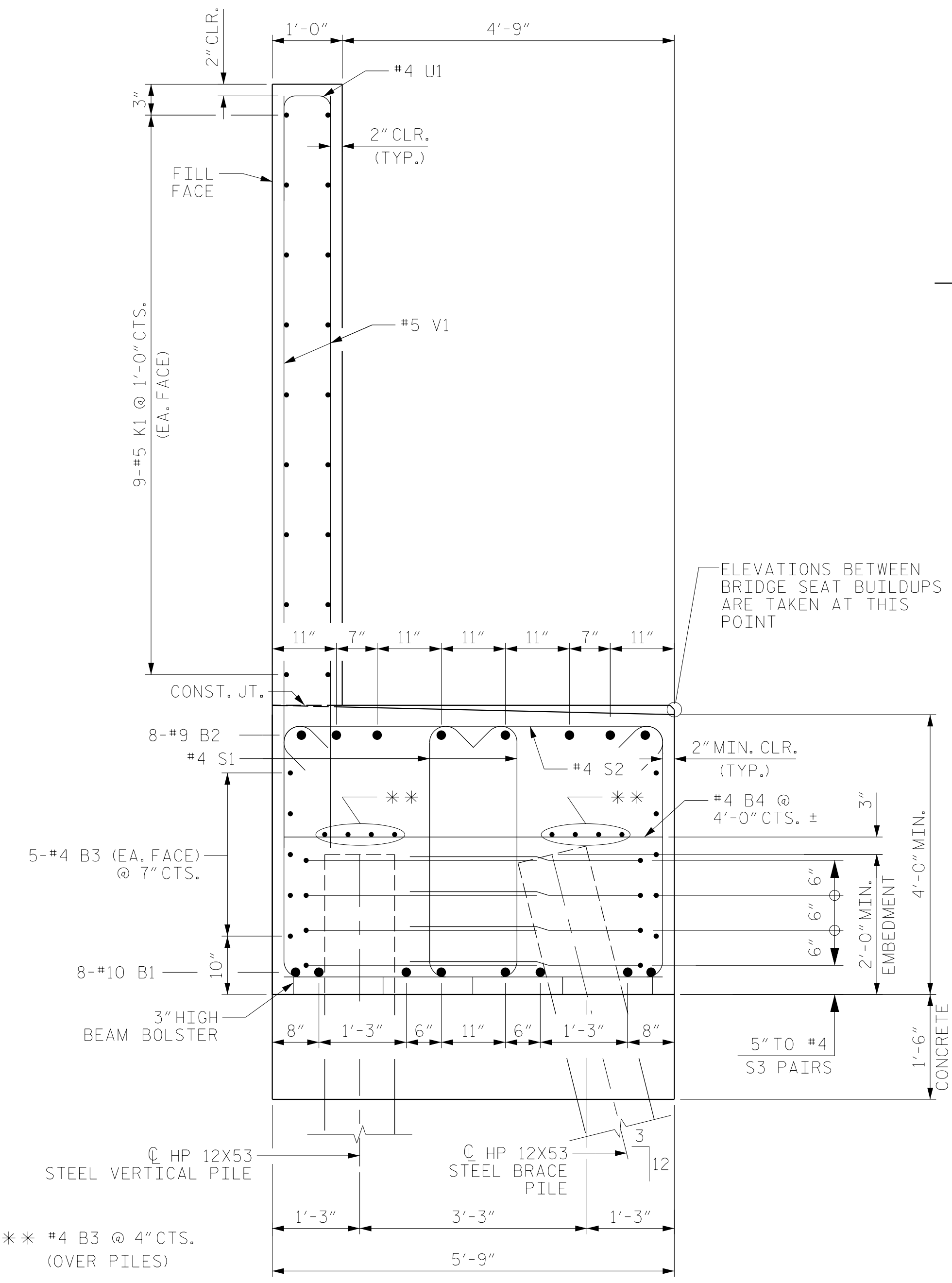


BAGGED STONE AND PIPE SHALL BE PLACED IMMEDIATELY AFTER COMPLETION OF END BENT EXCAVATION. PIPE MAY BE EITHER CONCRETE, CORRUGATED STEEL, CORRUGATED ALUMINUM ALLOY, OR CORRUGATED PLASTIC. PERFORATED PIPE WILL NOT BE ALLOWED.

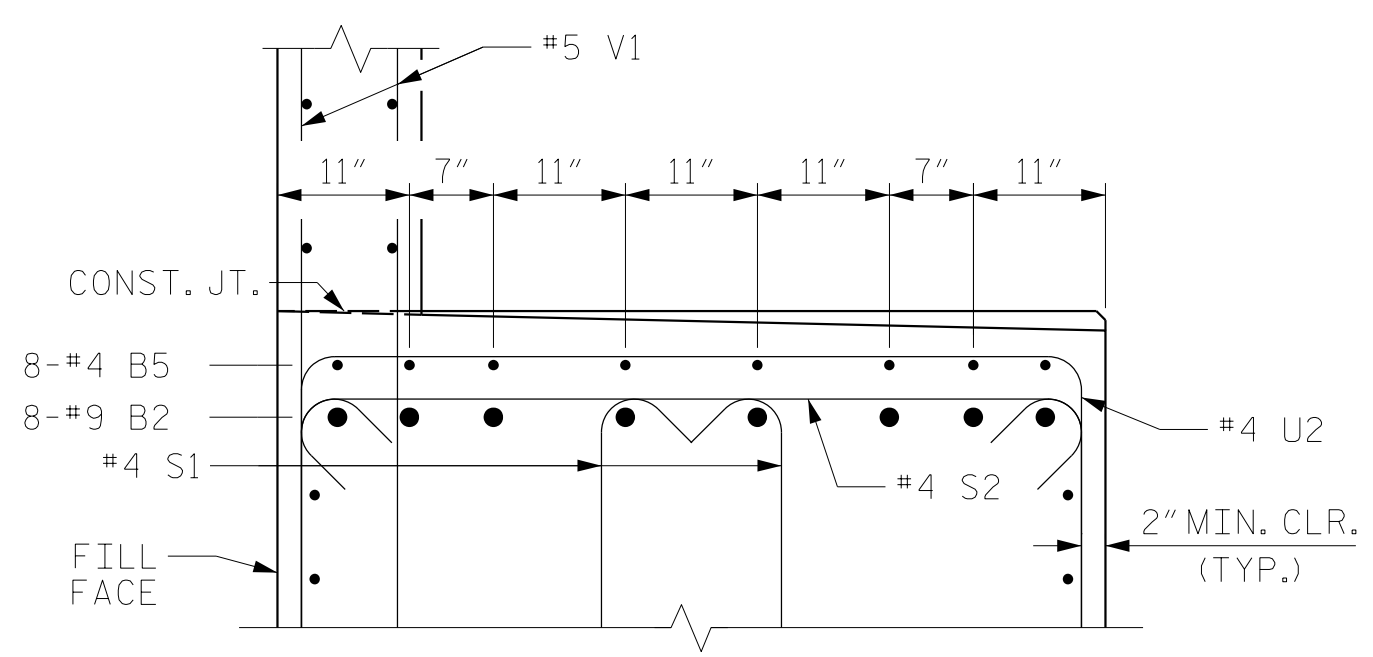
BAGGED STONE SHALL REMAIN IN PLACE UNTIL THE ENGINEER DIRECTS THAT IT BE REMOVED. THE CONTRACTOR SHALL REMOVE AND DISPOSE OF SILT ACCUMULATIONS AT BAGGED STONE WHEN SO DIRECTED BY THE ENGINEER. BAGS SHALL BE REMOVED AND REPLACED WHENEVER THE ENGINEER DETERMINES THAT THEY HAVE DETERIORATED AND LOST THEIR EFFECTIVENESS.

NO SEPARATE PAYMENT WILL BE MADE FOR THIS WORK AND THE ENTIRE COST OF THIS WORK SHALL BE INCLUDED IN THE UNIT CONTRACT PRICE BID FOR THE SEVERAL PAY ITEMS.

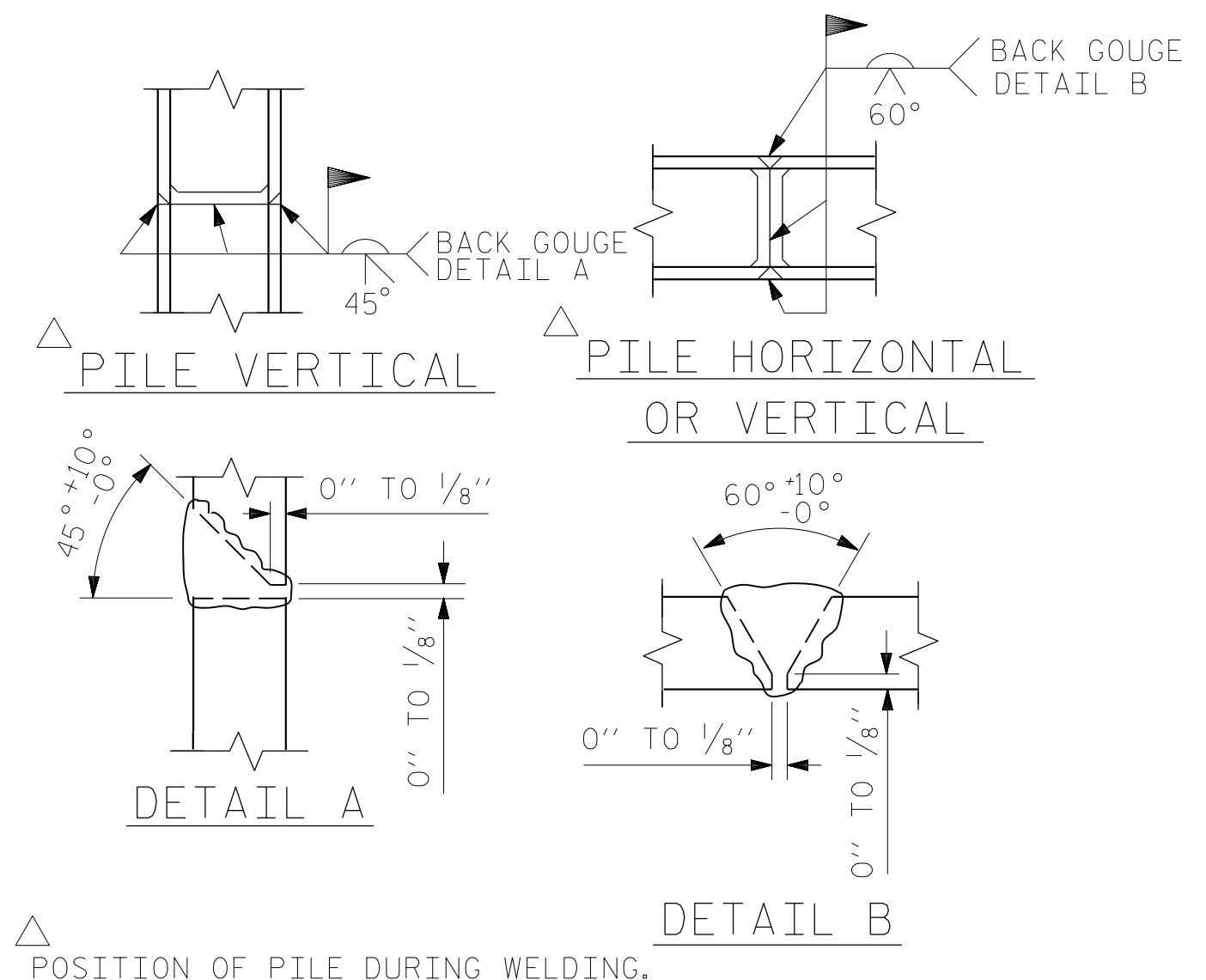
TEMPORARY DRAINAGE AT END BENT



SECTION A-A

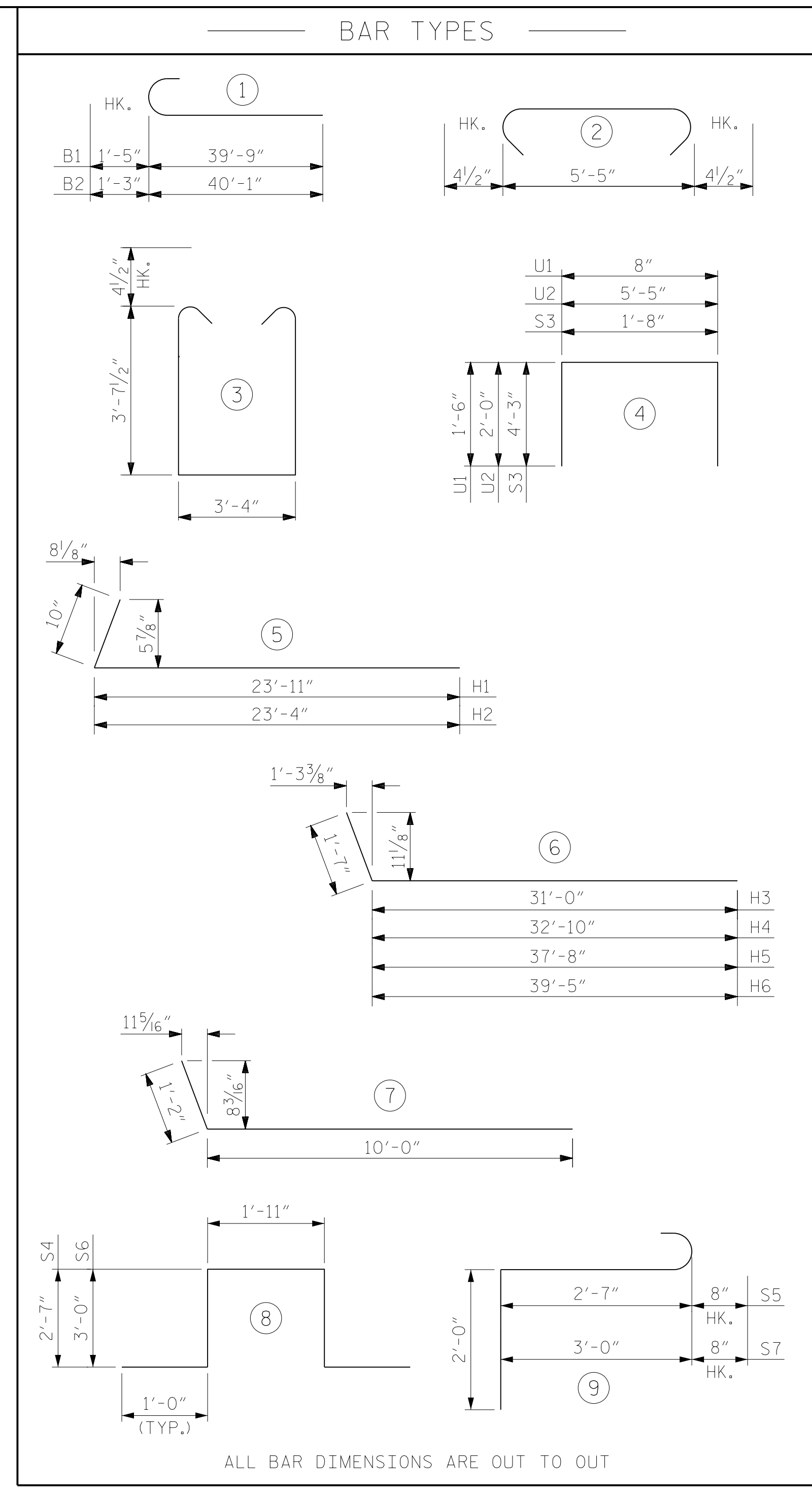


PARTIAL SECTION B-B



△ POSITION OF PILE DURING WELDING.

PILE SPLICE DETAILS



BILL OF MATERIAL					
END BENT NO. 2					
BAR	NO.	SIZE	TYPE	LENGTH	WEIGHT
B1	16	#10	1	41'-2"	2834
B2	16	#9	1	41'-4"	2249
B3	36	#4	STR	38'-8"	930
B4	17	#4	STR	5'-5"	62
B5	8	#4	STR	21'-2"	113
H1	21	#5	5	24'-9"	542
H2	21	#5	5	24'-2"	529
H3	21	#9	6	32'-7"	2326
H4	21	#9	6	34'-5"	2457
H5	8	#9	6	39'-3"	1068
H6	8	#9	6	41'-0"	1115
K1	36	#5	STR	38'-11"	1461
K2	8	#4	STR	4'-2"	22
K3	25	#7	STR	4'-2"	213
K4	17	#7	7	11'-2"	388
S1	140	#4	3	11'-4"	1060
S2	70	#4	2	6'-2"	288
S3	64	#4	4	10'-2"	435
S4	3	#6	8	9'-1"	41
S5	3	#6	9	5'-3"	24
S6	6	#6	8	9'-11"	89
S7	6	#6	9	5'-8"	51
U1	86	#4	4	3'-8"	211
U2	15	#4	4	9'-5"	94
V1	172	#5	STR	12'-3"	2198
V2	56	#5	STR	14'-8"	857
V3	124	#5	STR	14'-0"	1811
V4	11	#7	STR	14'-0"	315
REINFORCING STEEL					23,783 LBS.
CLASS A CONCRETE					
POUR #1					
CAP, COLLARS AND LOWER PART OF WINGS					82.4 C.Y.
POUR #2					
UPPER PART OF WINGS AND BACKWALL					56.4 C.Y.
TOTAL CLASS A CONCRETE					138.8 C.Y.
HP 12 X 53 STEEL PILES NO. 19					860.0 LIN. FT.
PILE DRIVING EQUIPMENT SETUP NO. 19					

PROJECT NO. U-2579AB
FORSYTH COUNTY
 STATION: 23+43.03 -Y16-

SHEET 5 OF 5



RS&H
 RS&H Architects-Engineers-Planners, Inc.
 8521 Six Forks Road, Suite 400
 919-926-4100 FAX 919-846-9080
 www.rsandh.com
 North Carolina License No. 50737-5403-1-C&E

STATE OF NORTH CAROLINA
 DEPARTMENT OF TRANSPORTATION
 RALEIGH
 SUBSTRUCTURE
 END BENT 2
 DETAILS

REVISIONS						SHEET NO.
NO.	BY:	DATE:	NO.	BY:	DATE:	S7-44
1			3			TOTAL SHEETS 48
2			4			

DOCUMENT NOT CONSIDERED FINAL UNLESS ALL SIGNATURES COMPLETED

DRAWN BY : NSC DATE : 09/2019
 CHECKED BY : MAL DATE : 12/2019
 DESIGN ENGINEER OF RECORD: JMR DATE : 12/2019