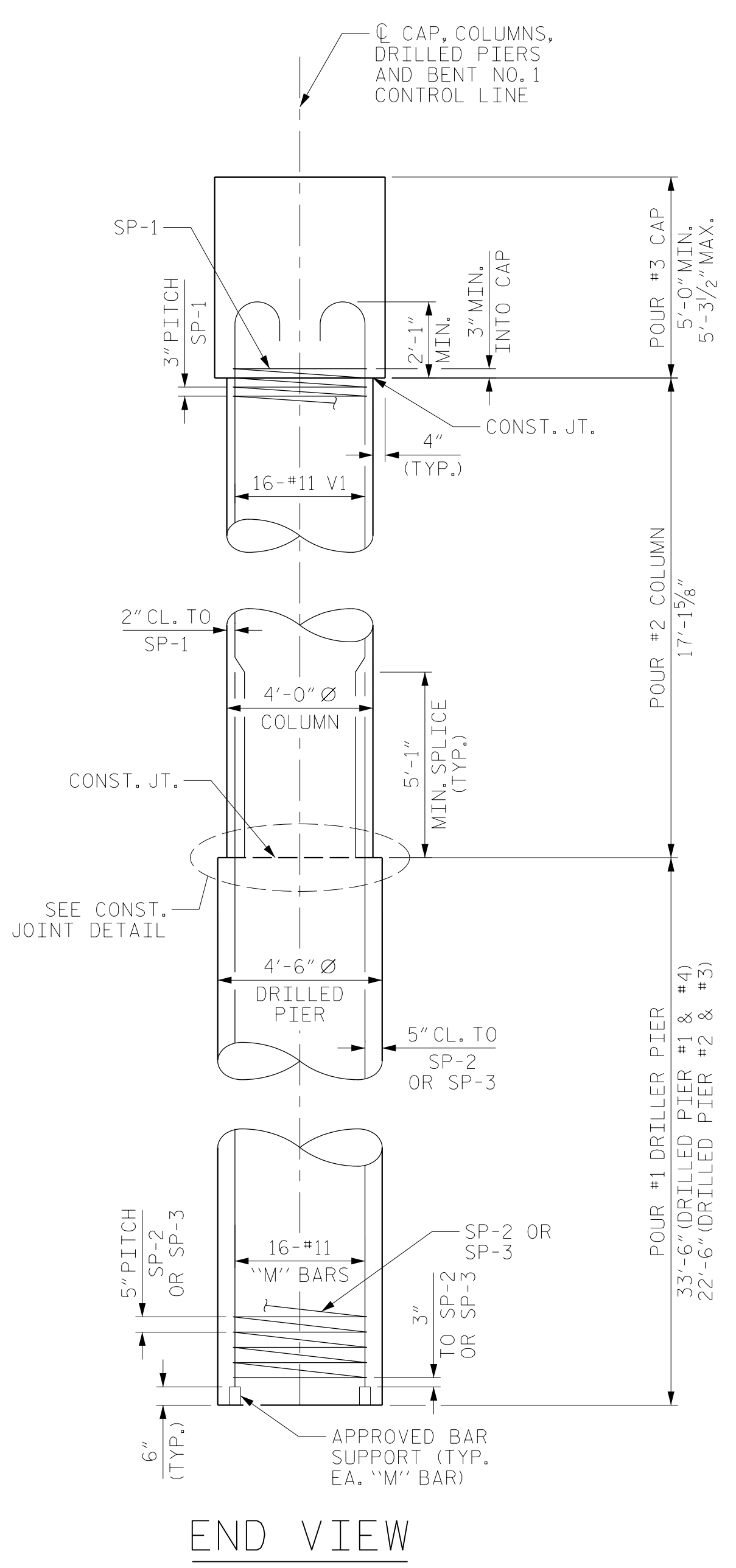
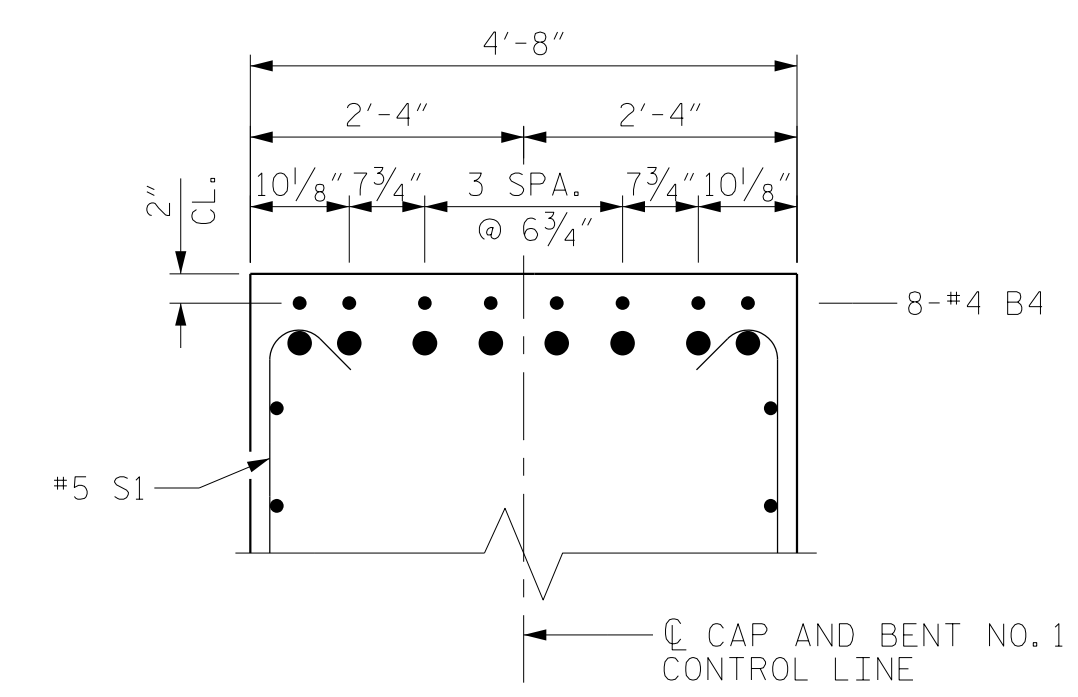


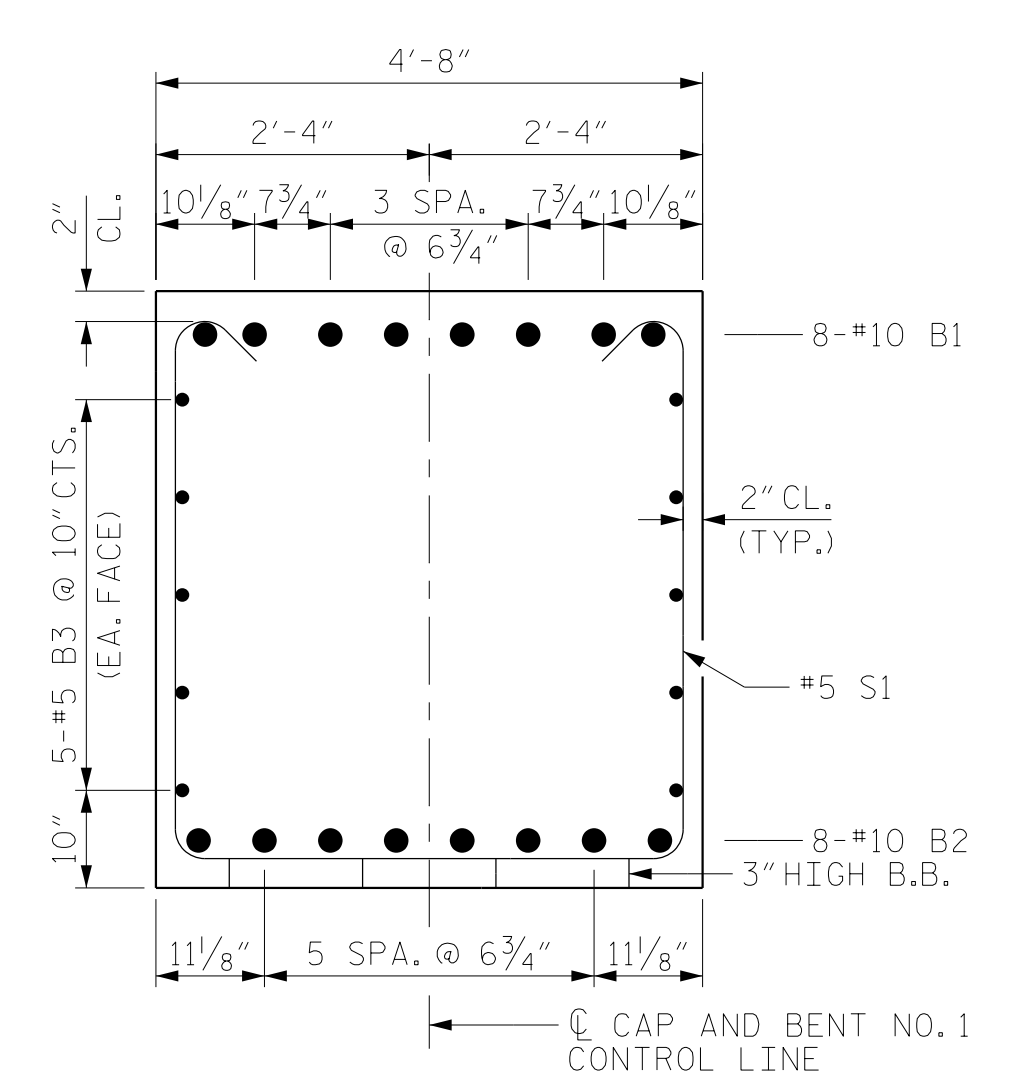
PLAN OF DRILLED PIERS & COLUMNS



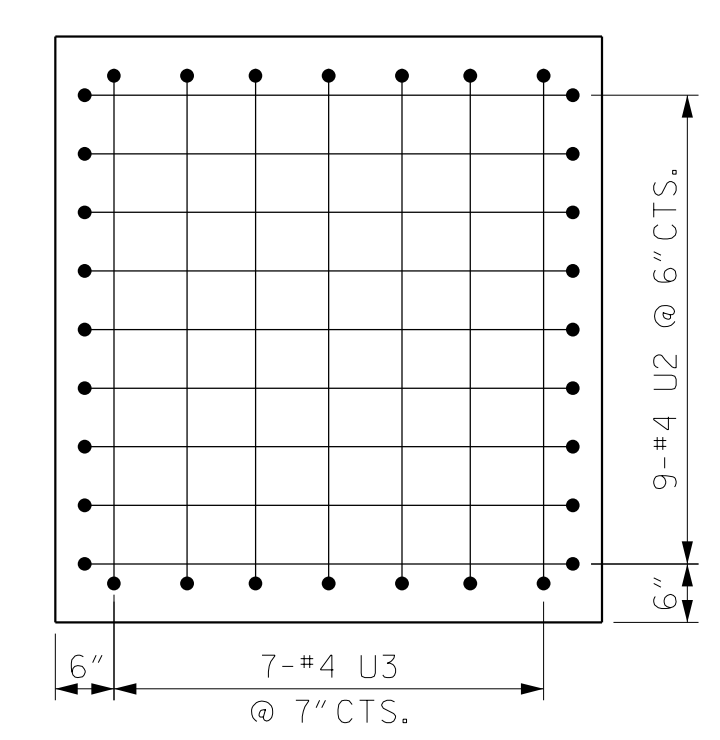
END VIEW



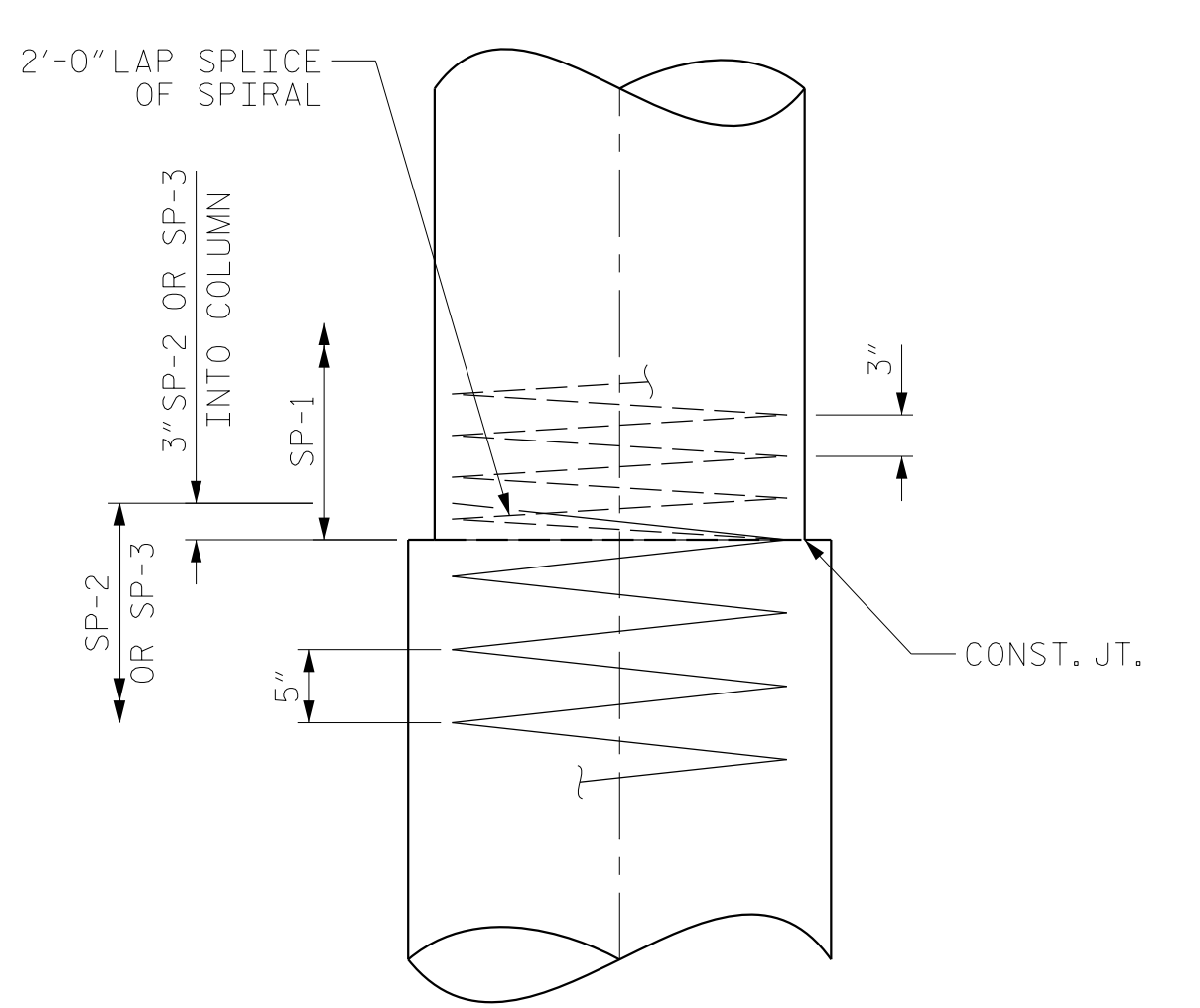
PARTIAL SECTION A-A



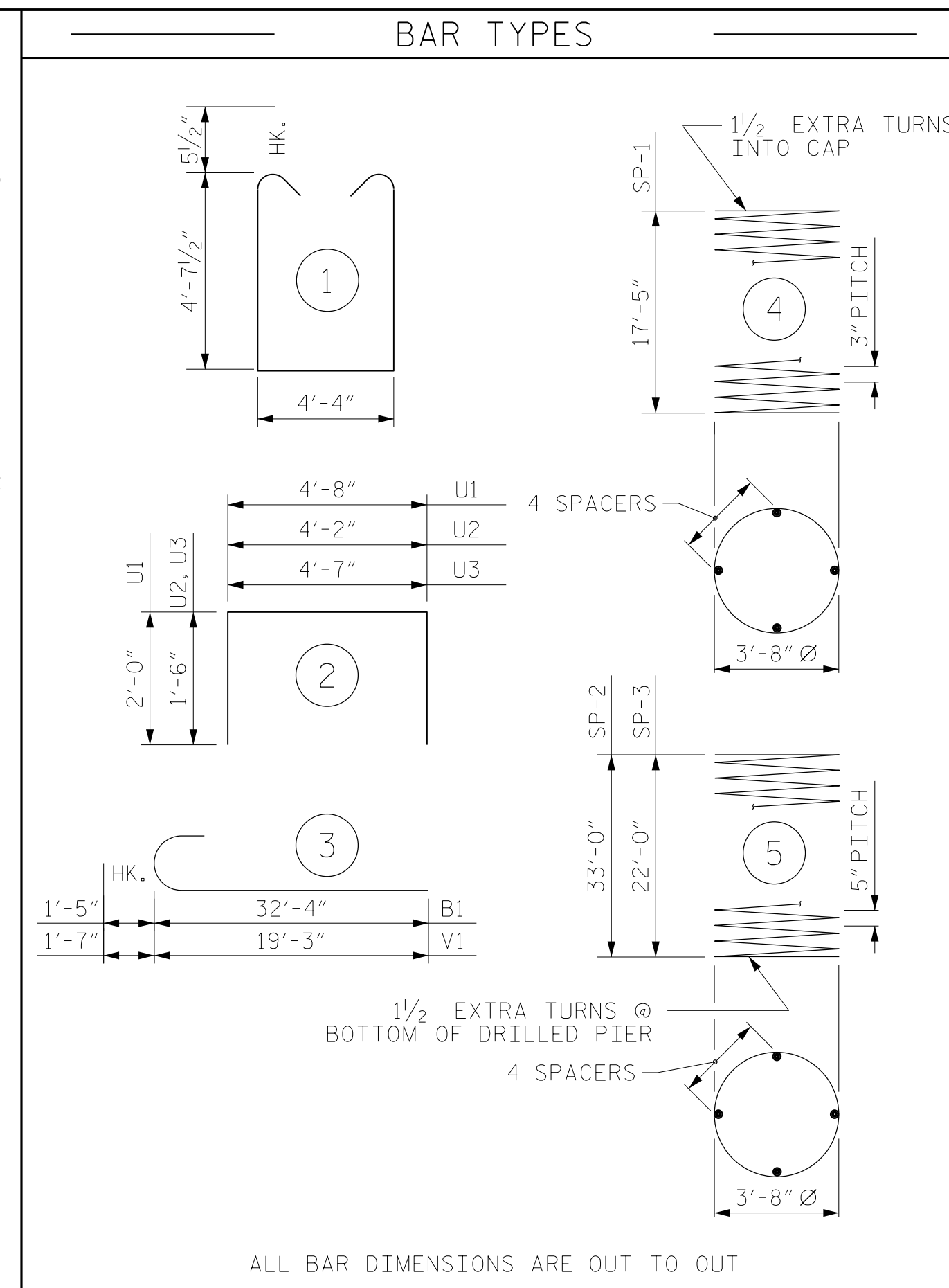
SECTION B-B



VIEW C-C



CONSTRUCTION JOINT DETAIL



BILL OF MATERIAL FOR BENT NO. 1					
BAR	NO.	SIZE	TYPE	LENGTH	WEIGHT
B1	16	#10	3	33'-9"	2324
B2	8	#10	STR.	58'-8"	2020
B3	10	#5	STR.	58'-8"	612
B4	8	#4	STR.	22'-2"	118
M1	32	#11	STR.	41'-1"	6985
M2	32	#11	STR.	30'-1"	5115
S1	46	#5	1	14'-6"	696
U1	59	#4	2	8'-8"	342
U2	18	#4	2	7'-2"	86
U3	14	#4	2	7'-7"	71
V1	64	#11	3	20'-10"	7084
REINFORCING STEEL				25,453 LBS.	
SP-1	4	*	4	811'-7"	2169
SP-2	2	**	5	917'-7"	1914
SP-3	2	**	5	619'-4"	1292
SPIRAL COLUMN REINFORCING STEEL				5,375 LBS.	
* THE SP-1 SPIRAL REINFORCING STEEL SHALL BE W20 OR D-20 COLD DRAWN WIRE OR #4 PLAIN OR DEFORMED BAR					
** THE SP-2 OR SP-3 SPIRAL REINFORCING STEEL SHALL BE W31 OR D-31 COLD DRAWN WIRE OR #5 PLAIN OR DEFORMED BAR					
CLASS A CONCRETE BREAKDOWN					
POUR #2 (COLUMNS)				31.9 C.Y.	
POUR #3 (CAP)				52.6 C.Y.	
TOTAL CLASS A CONCRETE				84.5 C.Y.	
DRILLED PIERS:					
DRILLED PIER CONCRETE POUR #1 (DRILLED PIERS)				66.0 C.Y.	
4'-6" Ø DRILLED PIER NOT IN SOIL				56.0 LIN. FT.	
4'-6" Ø DRILLED PIER IN SOIL				56.0 LIN. FT.	
Δ CSL TUBES				472.0 LIN. FT.	
Δ NO SEPARATE PAYMENT WILL BE MADE FOR CSL TUBES. CSL TUBES WILL BE INCLUDED IN THE UNIT BID PRICE FOR DRILLED PIERS.					

PROJECT NO. U-2579AB
FORSYTH COUNTY
 STATION: 23+43.03 -Y16-

SHEET 2 OF 2



STATE OF NORTH CAROLINA
 DEPARTMENT OF TRANSPORTATION
 RALEIGH
 SUBSTRUCTURE
 BENT NO. 1
 DETAILS

REVISIONS						SHEET NO.
NO.	BY:	DATE:	NO.	BY:	DATE:	S7-39
1			3			TOTAL SHEETS 48
2			4			

DRAWN BY : TWL DATE : 12/2019
 CHECKED BY : MRA DATE : 12/2019
 DESIGN ENGINEER OF RECORD: JMR DATE : 12/2019

DOCUMENT NOT CONSIDERED FINAL UNLESS ALL SIGNATURES COMPLETED