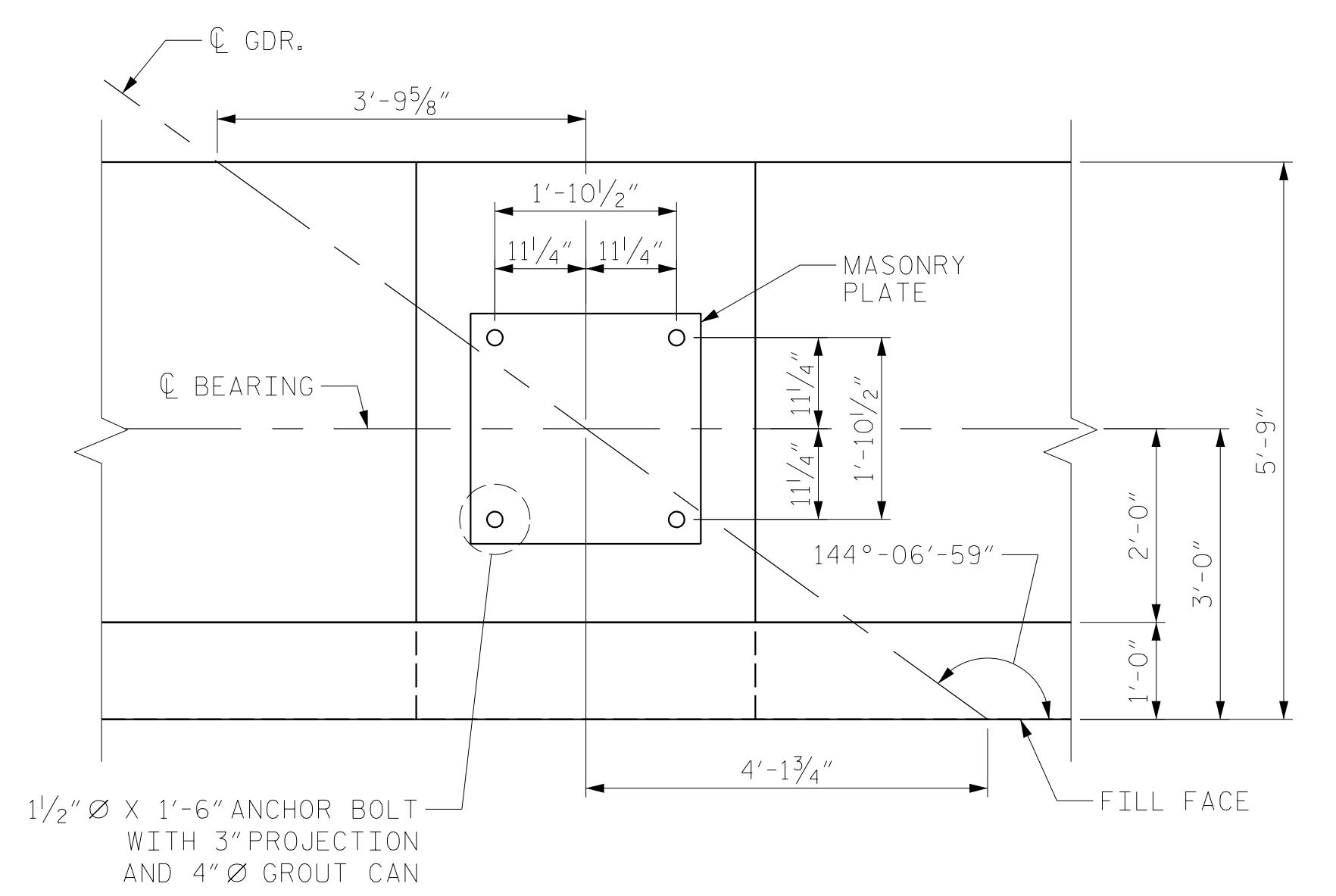


PARTIAL PLAN

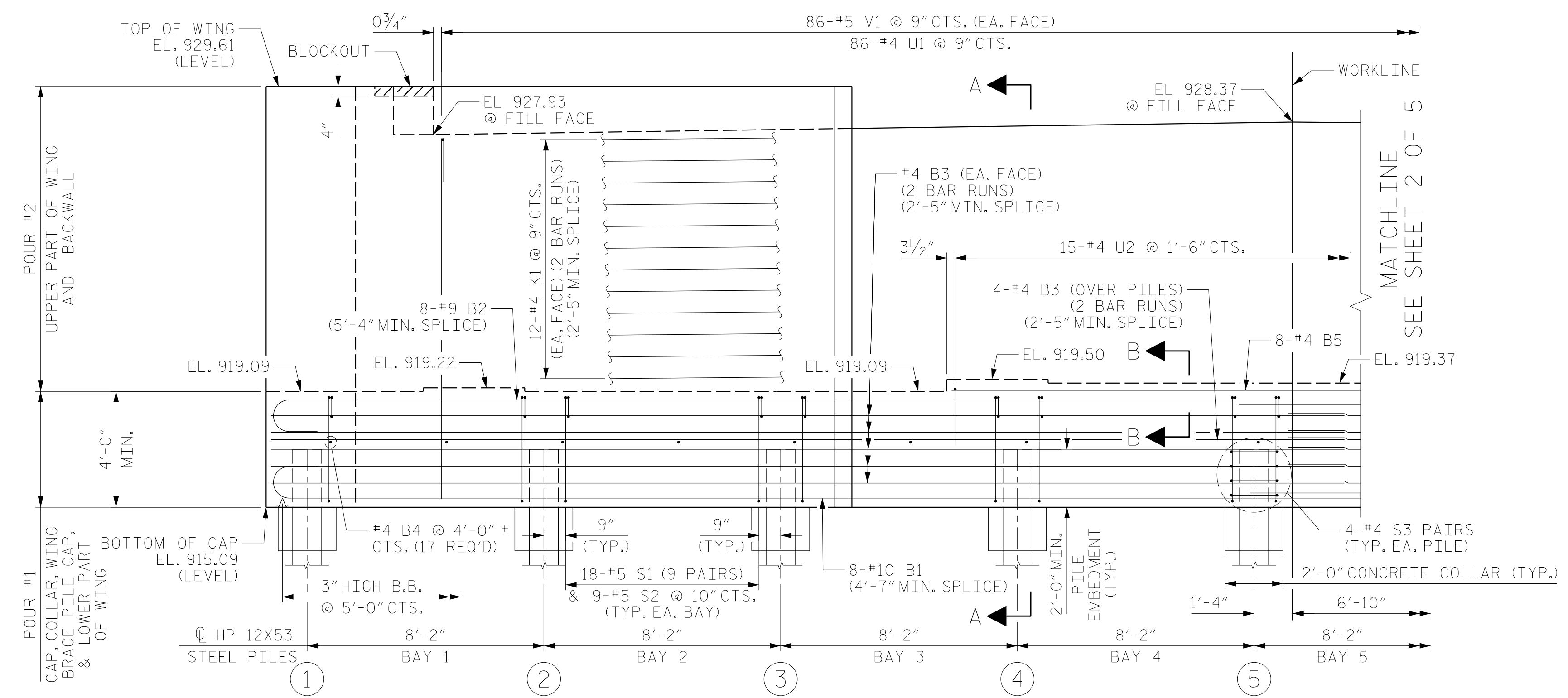
NOTES:

- FOR SECTION A-A AND PARTIAL SECTION B-B, SEE SHEET 5 OF 5.
- STIRRUPS AND #4 U2 BARS MAY BE SHIFTED AS NECESSARY TO CLEAR ANCHOR BOLTS.
- BACKWALL SHALL BE PLACED BEFORE APPLYING THE EPOXY PROTECTIVE COATING.
- THE TOP SURFACE OF THE END BENT CAP EXCEPT THE BRIDGE SEAT BUILDUPS SHALL BE SLOPED TRANSVERSELY FROM THE FILL FACE TO THE BACK FACE AT THE RATE OF 2%.
- THE TOP SURFACE OF THE END BENT CAPS SHALL BE CURED IN ACCORDANCE WITH THE STANDARD SPECIFICATIONS, EXCEPT THE MEMBRANE CURING COMPOUND METHOD SHALL NOT BE USED.



DETAIL "A"

PILES NOT SHOWN FOR CLARITY



PARTIAL ELEVATION

(BRACE PILES IN WING NOT SHOWN FOR CLARITY)

PROJECT NO. U-2579AB
 FORSYTH COUNTY
 STATION: 23+43.03 -Y16-

SHEET 1 OF 5



RS&H
 RS&H Architects-Engineers-Planners, Inc.
 8521 Six Forks Road, Suite 400
 919-926-4100 FAX 919-846-9080
 www.rsandh.com
 North Carolina License No. 50737-5403-C&E

STATE OF NORTH CAROLINA
 DEPARTMENT OF TRANSPORTATION
 RALEIGH
 SUBSTRUCTURE
 END BENT 1 PARTIAL
 PLAN AND ELEVATION

DRAWN BY : NSC	DATE : .09/2019
CHECKED BY : MAL	DATE : .12/2019
DESIGN ENGINEER OF RECORD: JMR	DATE : .12/2019

DOCUMENT NOT CONSIDERED
 FINAL UNLESS ALL
 SIGNATURES COMPLETED

REVISIONS						SHEET NO.
NO.	BY:	DATE:	NO.	BY:	DATE:	S7-33
1			3			TOTAL SHEETS 48
2			4			