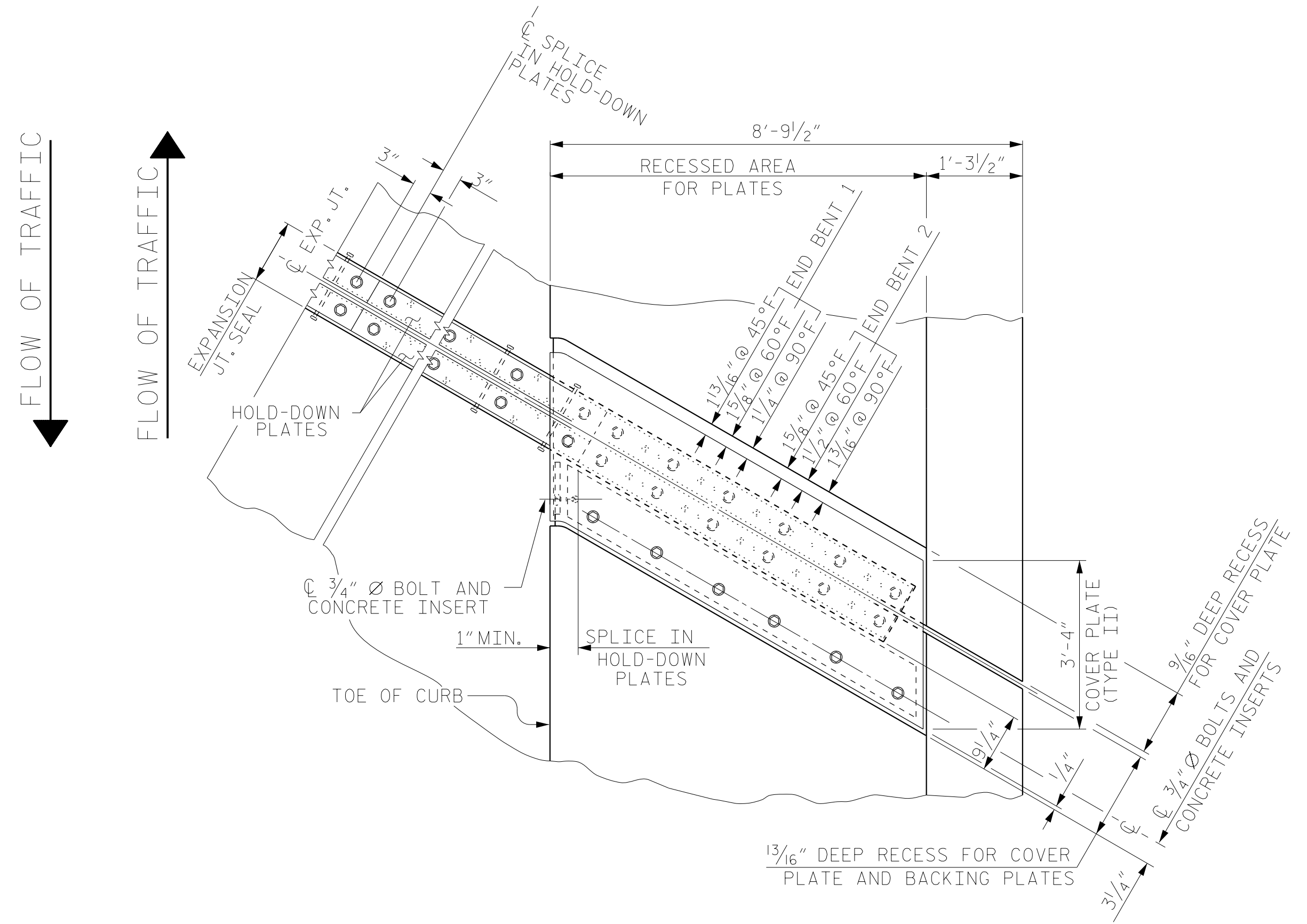
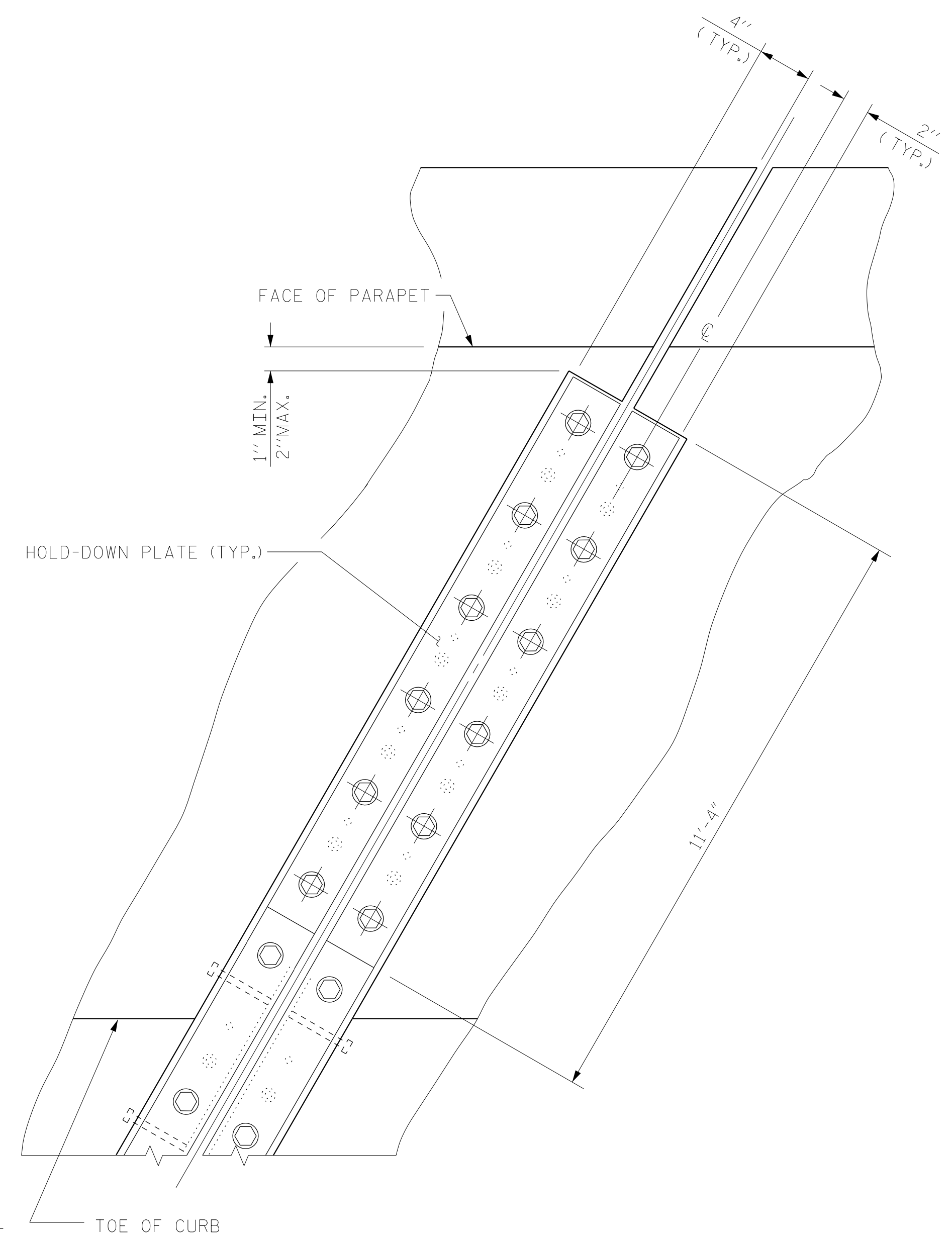


**NOTES:**

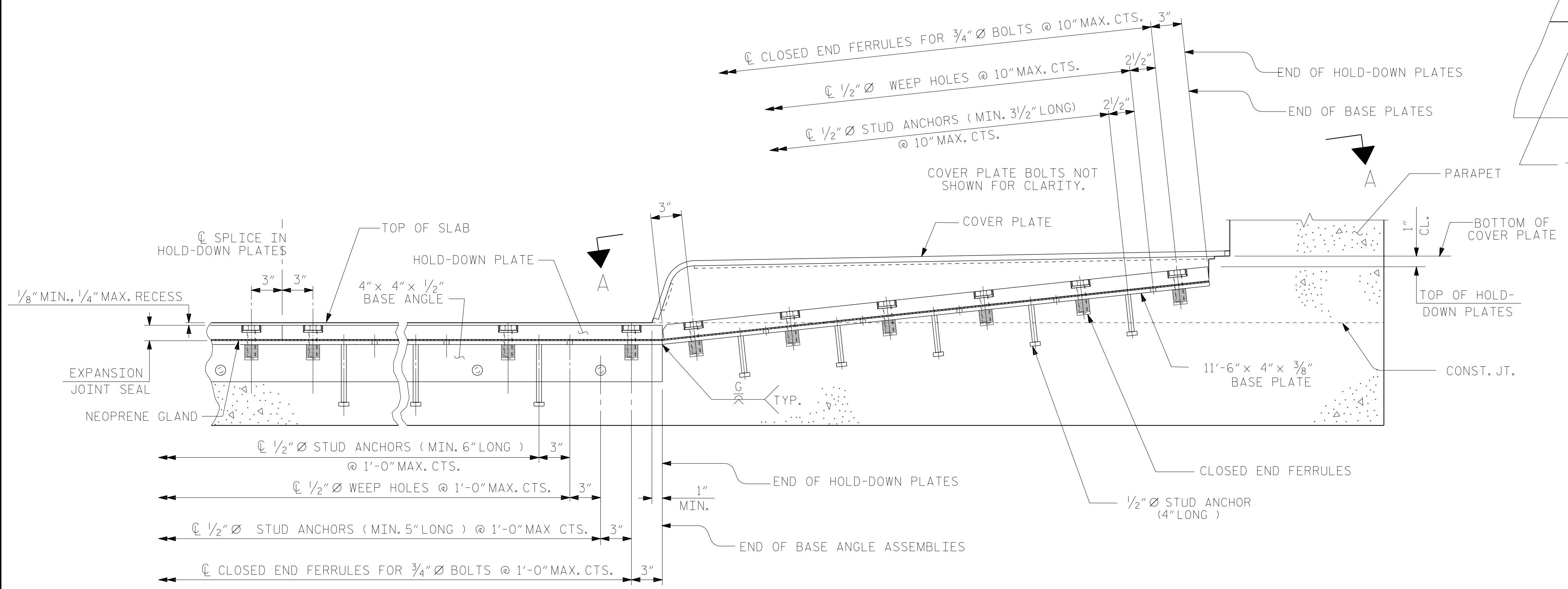
FOR SIDEWALK COVER PLATE DETAILS, SEE SHEET 4 OF 4.  
 FOR DETAILS NOT SHOWN, SEE SHEET 2 OF 4.



**PLAN OF EXPANSION JOINT SEAL - RIGHT SIDE**



**SECTION A - A**



**SECTION THRU SIDEWALK NORMAL TO JOINT**

PROJECT NO. U-2579AB  
FORSYTH COUNTY  
 STATION: 23+43.03 -Y16-

SHEET 3 OF 4



**RS&H**  
 RS&H Architects-Engineers-Planners, Inc.  
 8521 Six Forks Road, Suite 400  
 919-926-4100 FAX 919-846-9080  
 www.rsandh.com  
 North Carolina License No. 50737-5-0403-1-C&E

STATE OF NORTH CAROLINA  
 DEPARTMENT OF TRANSPORTATION  
 RALEIGH  
 STANDARD  
 EXPANSION JOINT  
 SEAL DETAILS  
 FOR SIDEWALK

REVISIONS						SHEET NO.
NO.	BY:	DATE:	NO.	BY:	DATE:	TOTAL SHEETS
1			3			48
2			4			

ASSEMBLED BY : TWL	DATE : 08/2019
CHECKED BY : MRA	DATE : 12/2019
DRAWN BY : REK 10/87	REV. 5/1/06 TLA/GM
CHECKED BY : CRK 1/88	REV. 10/1/11 MAA/GM
	REV. 12/17 MAA/THG

DOCUMENT NOT CONSIDERED  
 FINAL UNLESS ALL  
 SIGNATURES COMPLETED