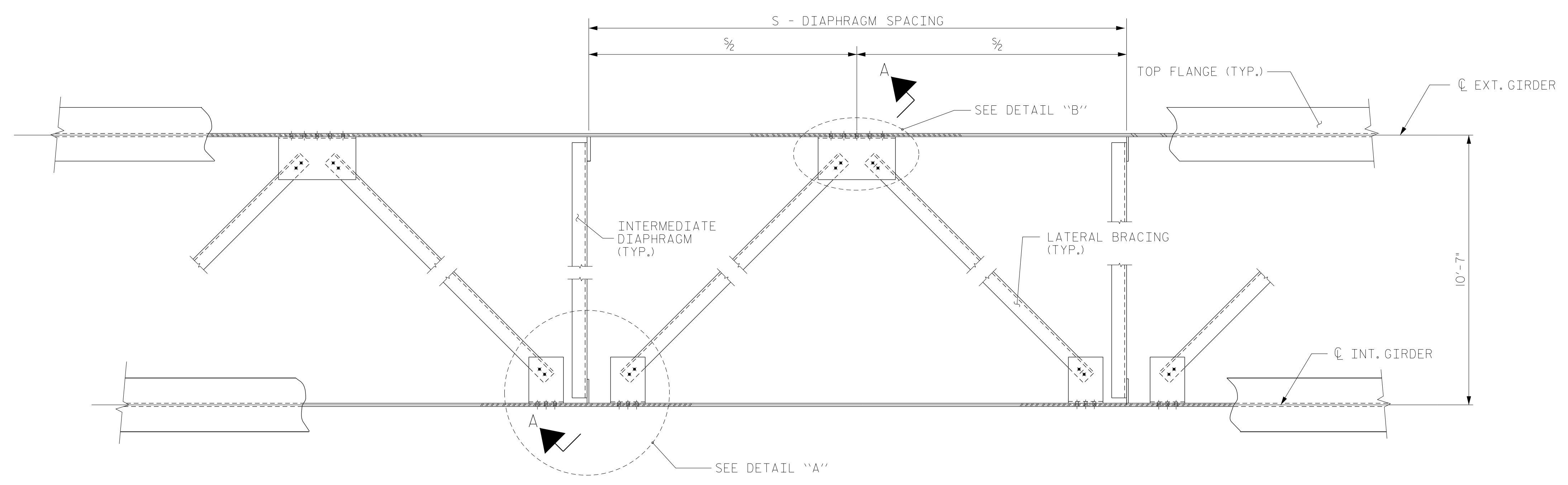


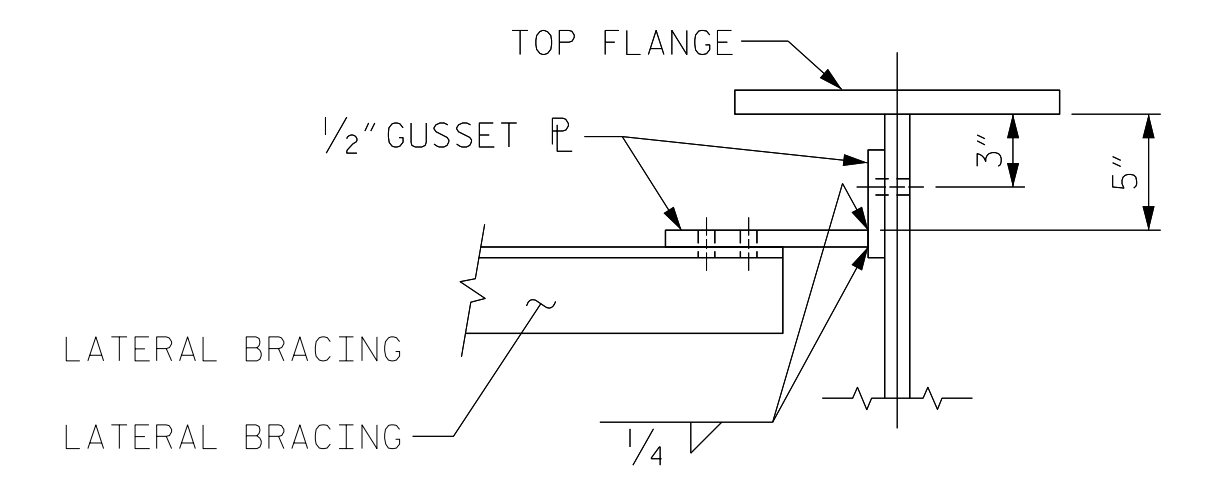
NOTES

- LATERAL BRACING ASSEMBLY SHALL COMPLY WITH SECTION 1072 OF THE STANDARD SPECIFICATIONS.
- ALL STRUCTURAL STEEL SHALL BE AASHTO M270 GRADE 50W OR APPROVED EQUAL.
- TENSION ON THE ASTM A325 BOLTS SHALL BE CALIBRATED USING DIRECT TENSION INDICATOR WASHERS IN ACCORDANCE WITH THE STANDARD SPECIFICATIONS.
- ALL BOLTED CONNECTIONS SHALL BE 7/8" Ø HIGH STRENGTH BOLTS.
- THE CONTRACTOR HAS THE OPTION TO CLIP THE PROTRUDING CORNERS OF THE GUSSET PLATES, AT NO ADDITIONAL COST TO THE DEPARTMENT.
- BENT GUSSET PLATES OR ROLLED ANGLE SHAPES MAY BE SUBSTITUTED FOR THE WELDED GUSSET PLATES DETAILED IF APPROVED BY THE ENGINEER, AT NO ADDITIONAL COST TO THE DEPARTMENT.
- INSTALL THE LATERAL BRACING AFTER ERECTING THE EXTERIOR GIRDER AND THE ADJACENT INTERIOR GIRDER AND INSTALLING THE INTERMEDIATE DIAPHRAGMS.
- THE TERMS "INTERMEDIATE DIAPHRAGMS" AND "INTERMEDIATE CROSSFRAMES" SHOULD BE USED INTERCHANGEABLY THROUGHOUT.
- SEE FRAMING PLAN FOR ADDITIONAL LATERAL BRACING DETAILS.

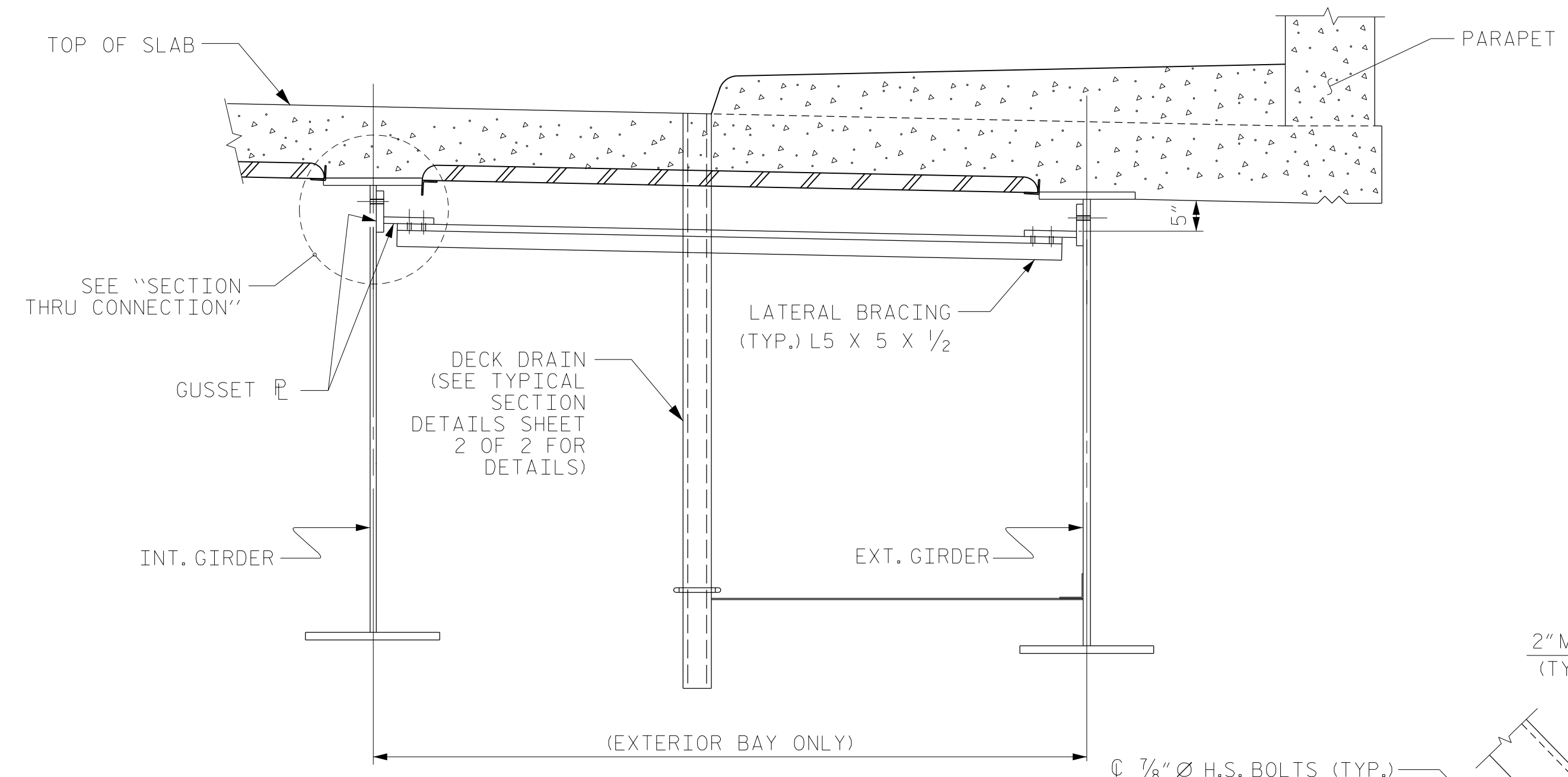


PART PLAN - NEAR TOP FLANGE LATERAL BRACING

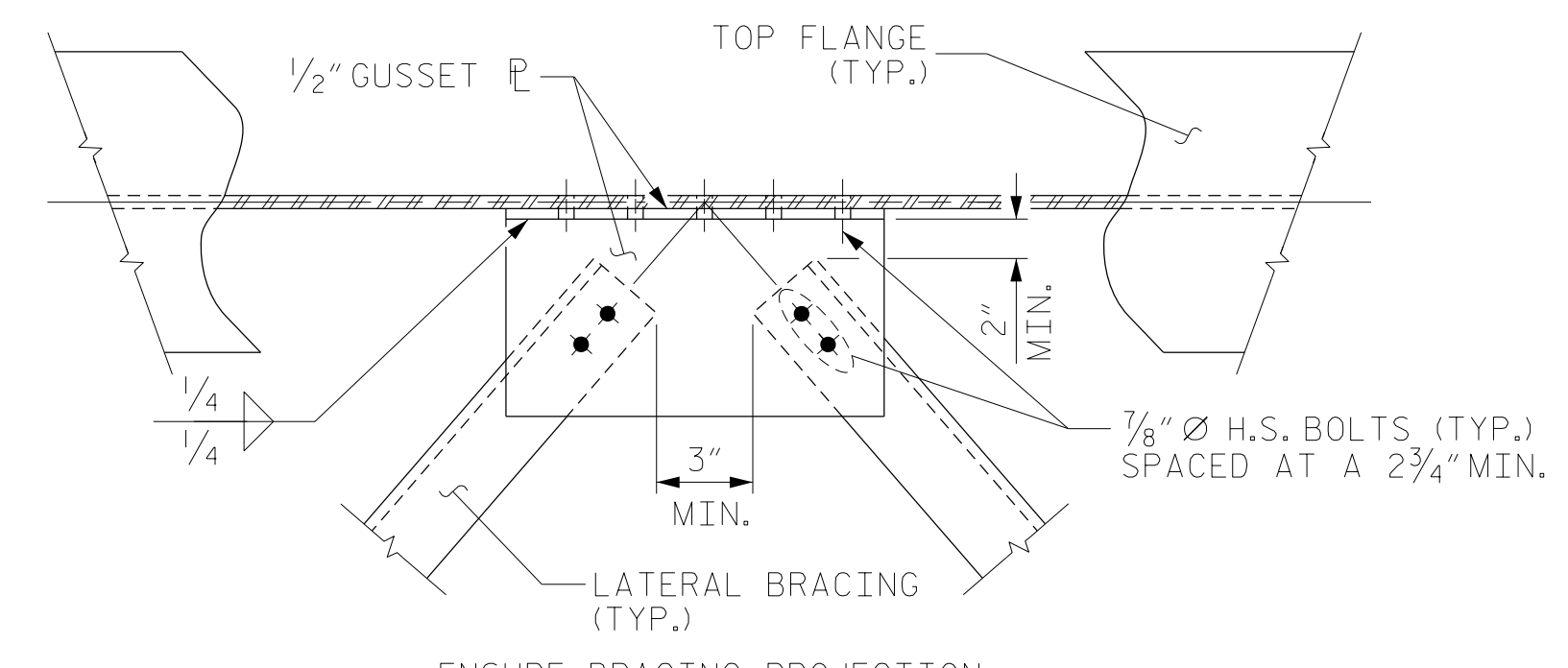
(THROUGHOUT EXTERIOR BAYS ONLY)
DECK DRAINS NOT SHOWN FOR CLARITY, SEE PLAN OF SPAN SHEETS FOR LOCATIONS



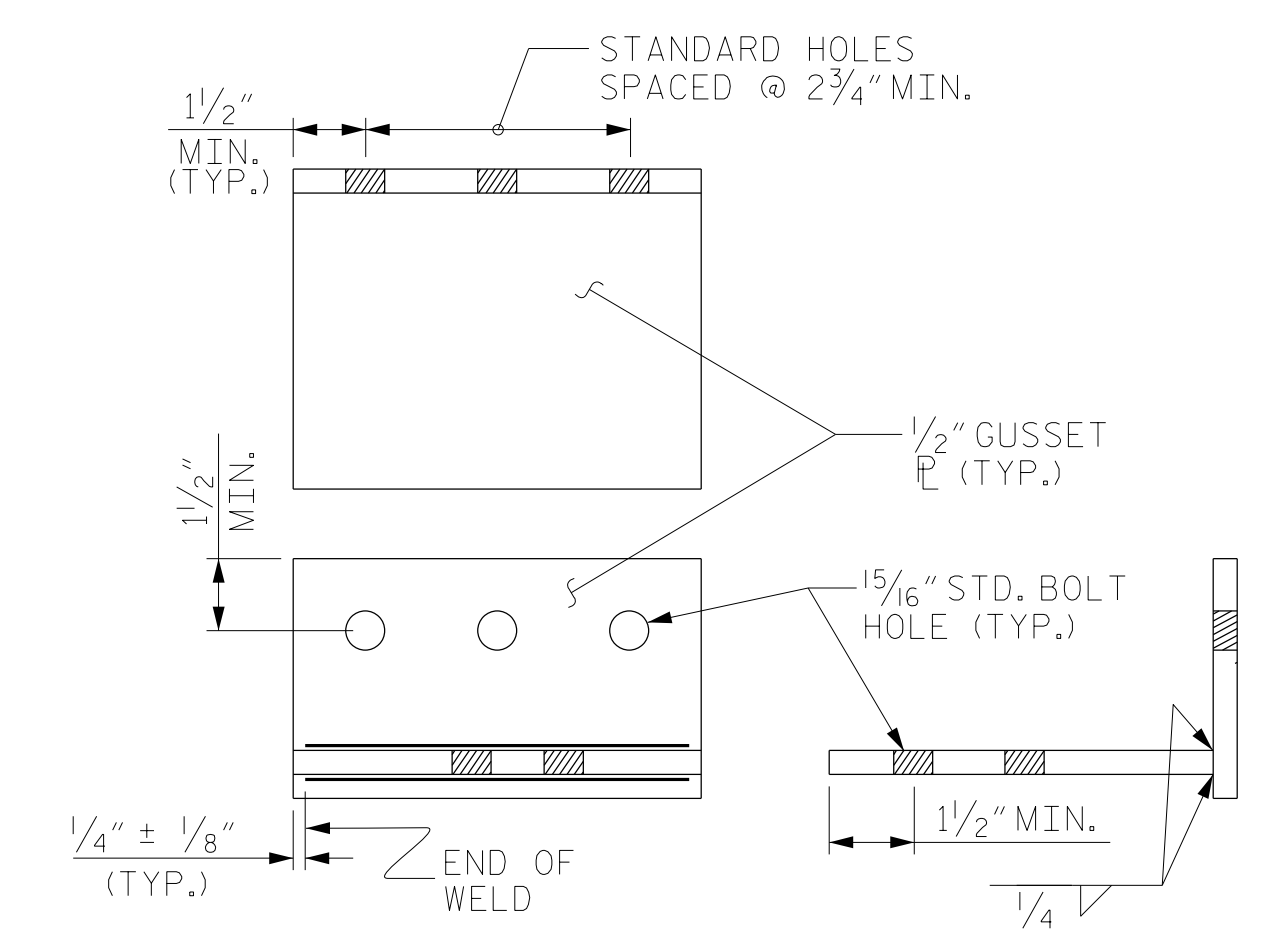
SECTION THRU CONNECTION



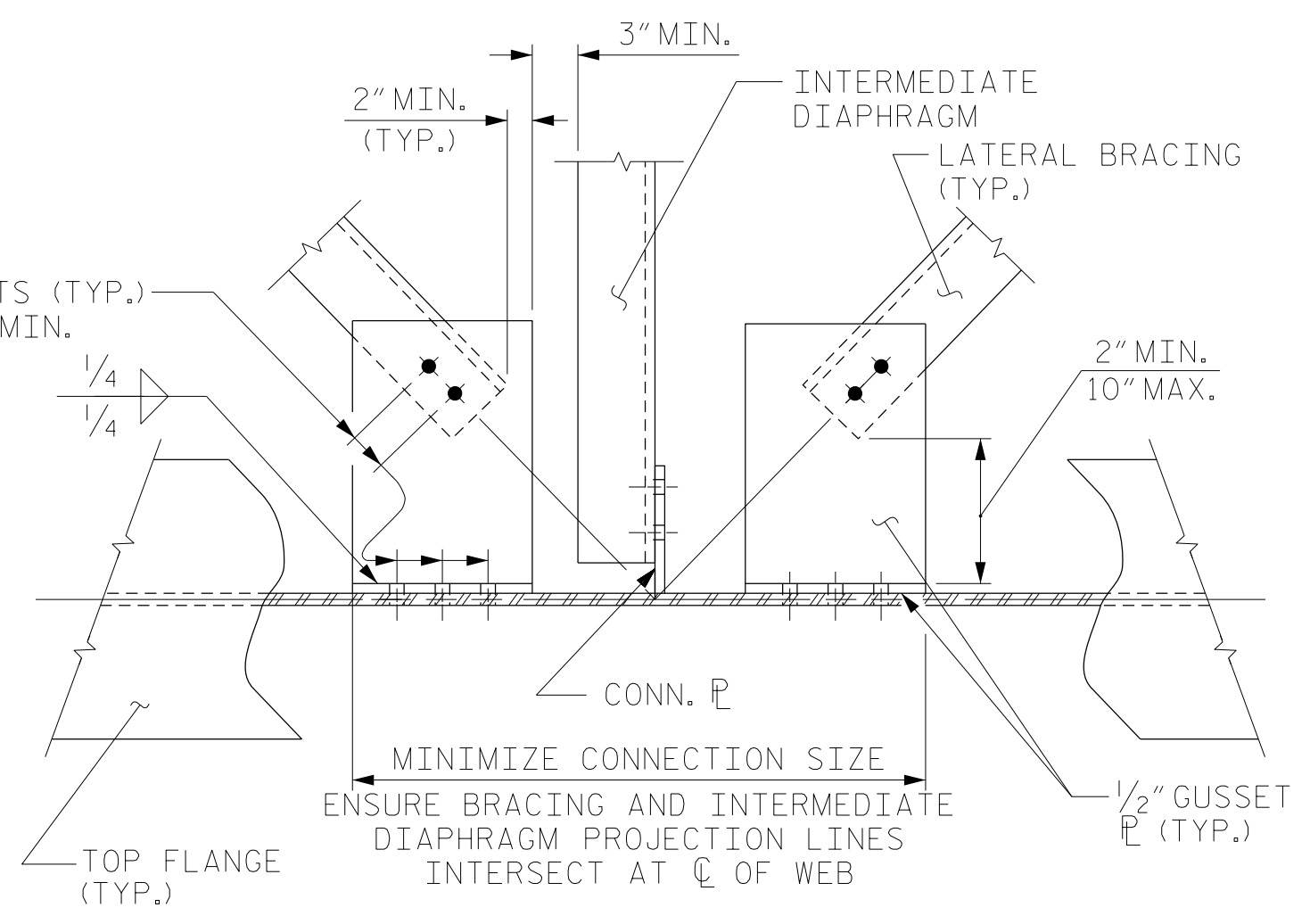
SECTION A-A



DETAIL "B"



CONNECTION DETAIL



DETAIL "A"

PROJECT NO. U-2579AB
FORSYTH COUNTY
STATION: 23+43.03 -Y16-

RS&H
RS&H Architects-Engineers-Planners, Inc.
8521 Six Forks Road, Suite 400
919-926-4100 FAX 919-846-9080
www.rsandh.com
North Carolina License No. 9073-F-0403-C-28

STATE OF NORTH CAROLINA DEPARTMENT OF TRANSPORTATION RALEIGH					
STANDARD LATERAL BRACING					
SHEET NO. ST-17					
TOTAL SHEETS 48					
REVISIONS					
NO.	BY:	DATE:	NO.	BY:	DATE:
1			3		
2			4		

ASSEMBLED BY: TRM	DATE: 12/2019
CHECKED BY: MAL	DATE: 12/2019
DRAWN BY: WMC 6/11	REV. 12/17 MAA/THC
CHECKED BY: GM 6/11	

DOCUMENT NOT CONSIDERED FINAL UNLESS ALL SIGNATURES COMPLETED