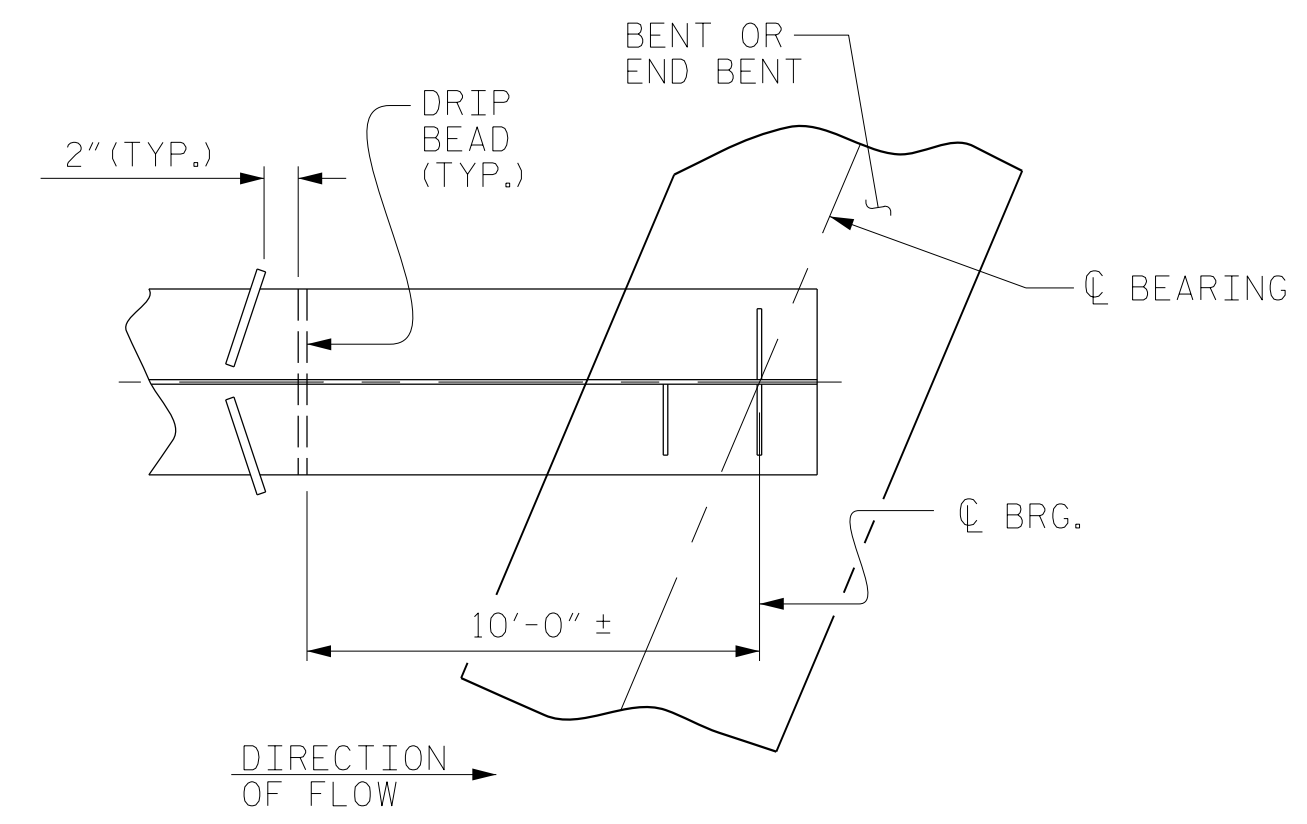


GIRDER MAKE-UP

CHARPY V-NOTCH TESTS FOR CONTINUOUS PLATE GIRDERS

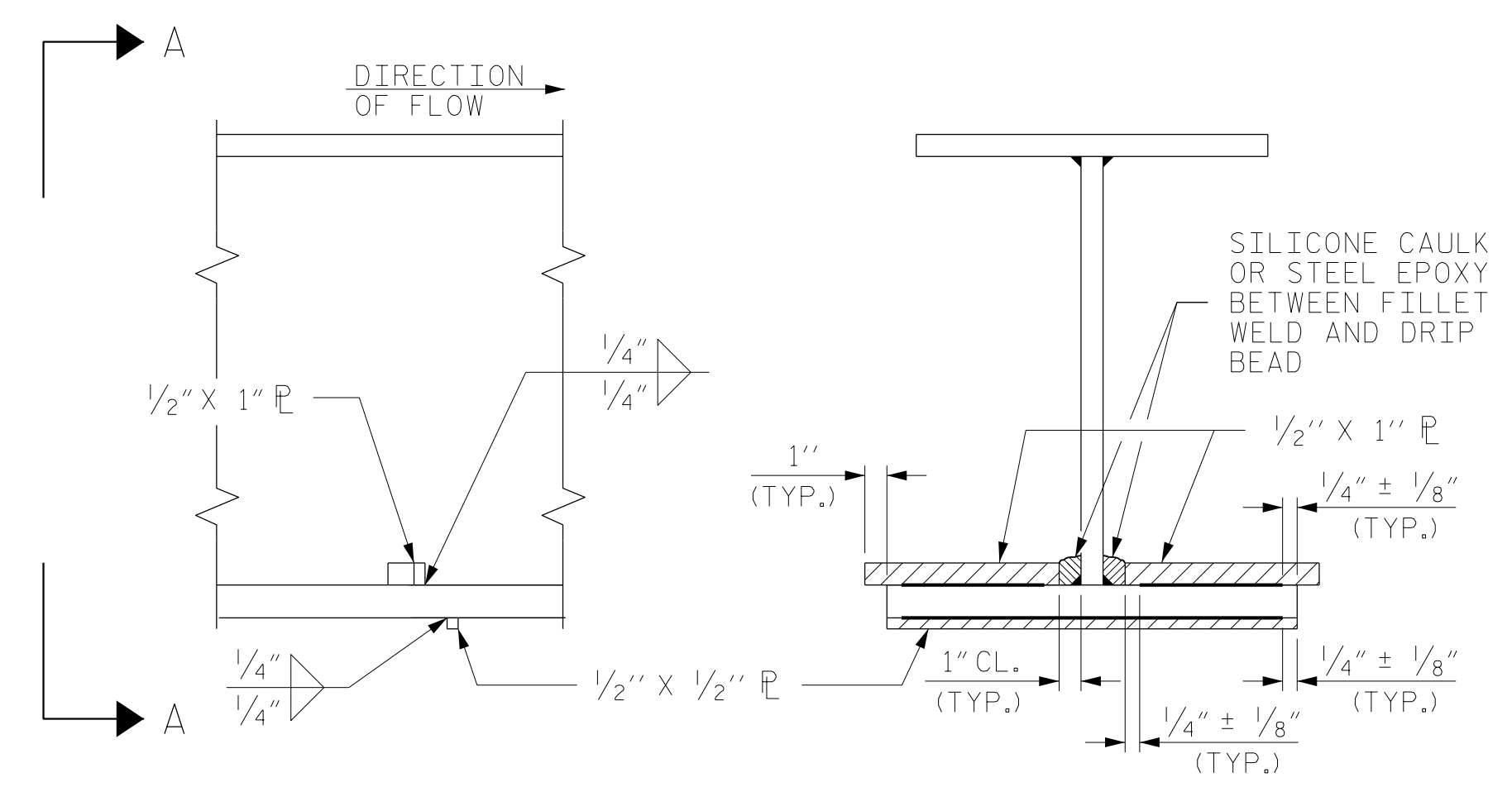
NOTES

1. CHARPY V-NOTCH TEST ARE REQUIRED FOR ALL TOP OR BOTTOM FLANGE PLATES WHICH FALL WITHIN THESE LIMITS, ALL WEB PLATES, AND ALL SPLICE PLATES. IF A PERMITTED SHOP FLANGE SPLICE IS NOT USED, CHARPY V-NOTCH TEST WILL BE REQUIRED FOR THE ENTIRE FLANGE PLATE. FOR CHARPY V-NOTCH TESTS, SEE ARTICLE 1072-7 OF THE STANDARD SPECIFICATIONS.
2. NO WELDING OF FORMS OR FALSEWORK TO THE TOP FLANGE WILL BE PERMITTED IN THIS REGION.



PART PLAN - BOTTOM FLANGE

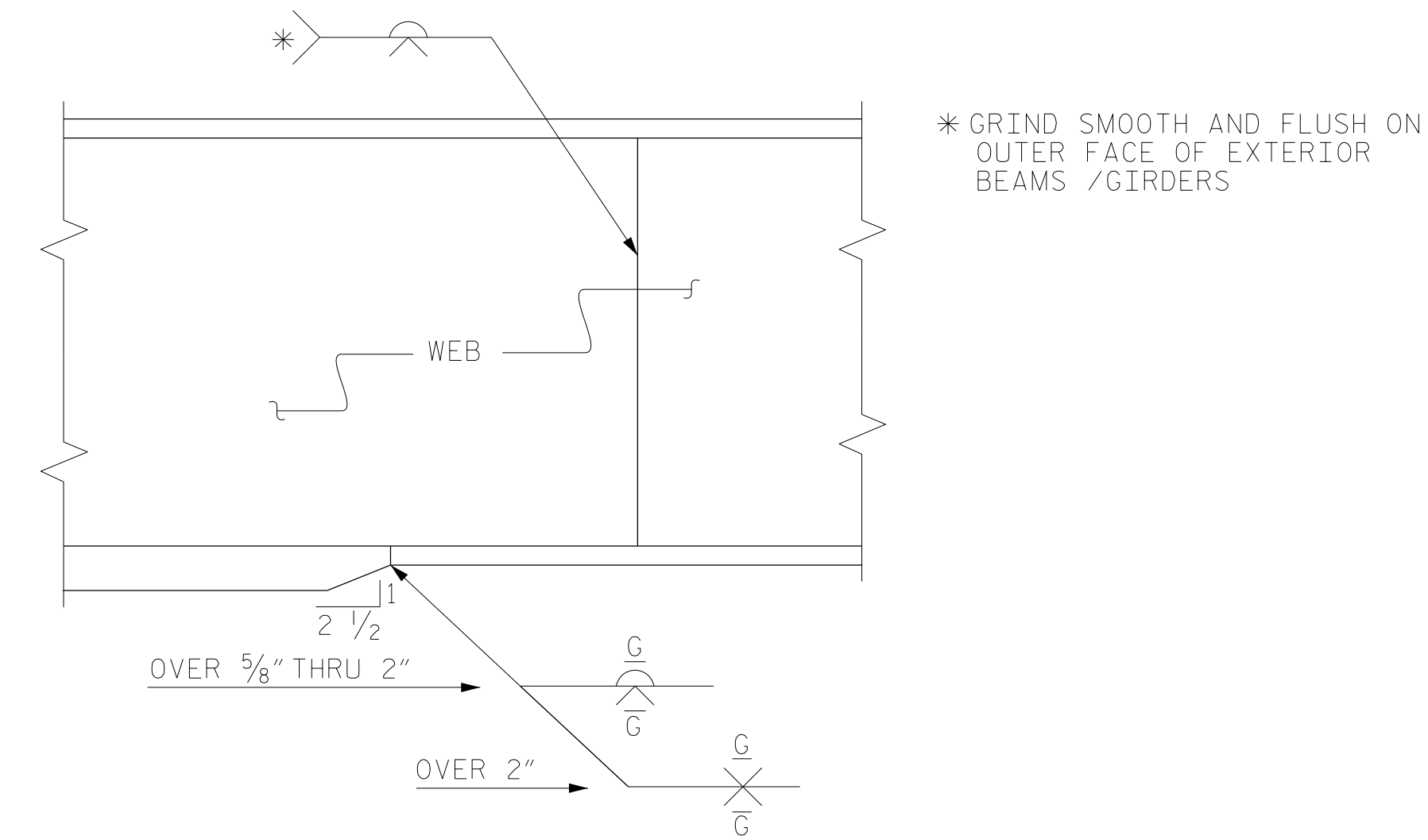
END BENT 2 SHOWN, BENT 1 SIMILAR
CROSSFRAMES AND BEARING ASSEMBLY NOT SHOWN FOR CLARITY



SECTION

VIEW A-A

DRIP BEAD DETAILS



ELEVATION

TYPICAL FLANGE AND WEB BUTT JOINT

PROJECT NO. U-2579AB
FORSYTH COUNTY
STATION: 23+43.03 -Y16-

SHEET 3 OF 5



RS&H
RS&H Architects-Engineers-Planners, Inc.
8521 Six Forks Road, Suite 400
919-926-4100 FAX 919-846-9080
www.rsandh.com
North Carolina License No. 50737-F-0403-C-28

STATE OF NORTH CAROLINA
DEPARTMENT OF TRANSPORTATION
RALEIGH
SUPERSTRUCTURE
STRUCTURAL STEEL
DETAILS

REVISIONS						SHEET NO.
NO.	BY:	DATE:	NO.	BY:	DATE:	ST-14
1			3			TOTAL SHEETS
2			4			48

DRAWN BY : TRM DATE : 10/2019
CHECKED BY : MAL DATE : 12/2019
DESIGN ENGINEER OF RECORD: JMR DATE : 12/2019

DOCUMENT NOT CONSIDERED FINAL UNLESS ALL SIGNATURES COMPLETED