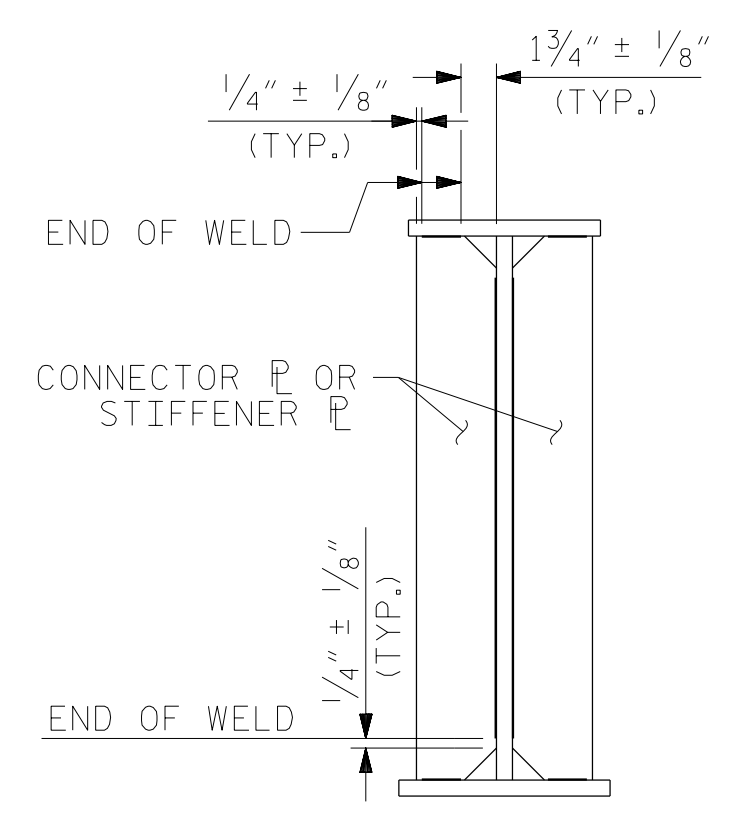
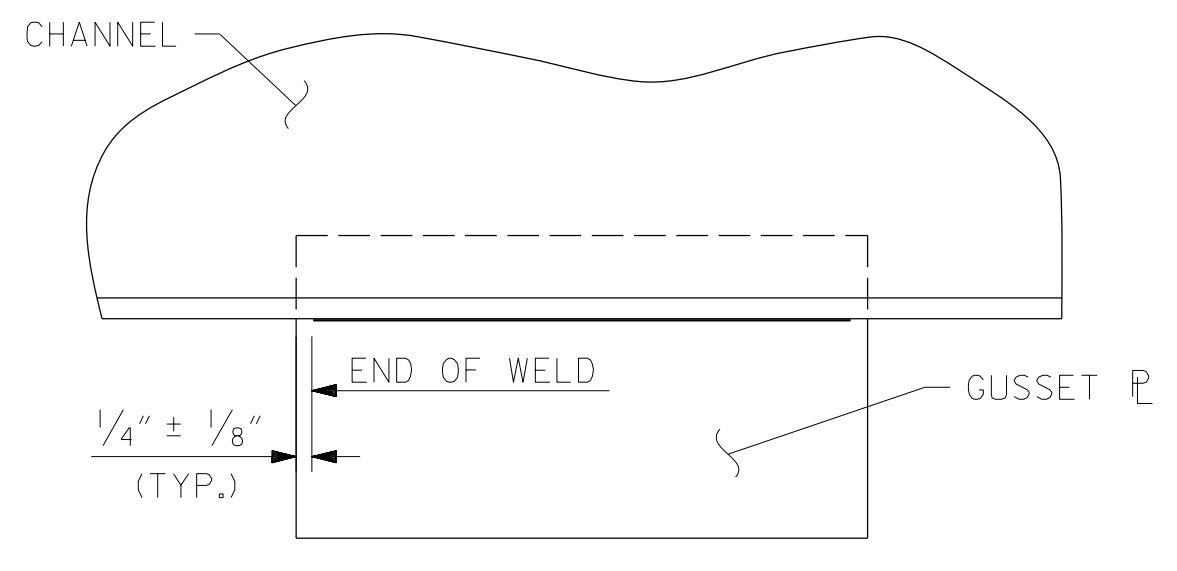


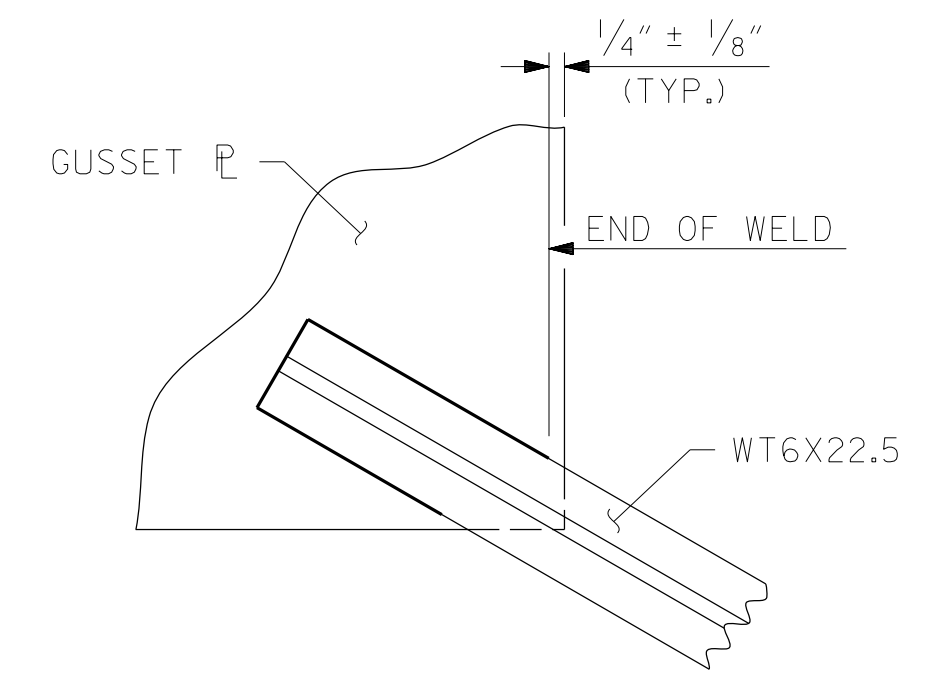
TYPICAL END CROSSFRAME



TYPICAL STIFFENER OR CONNECTOR PLATE CONNECTIONS
(INTERIOR GIRDER SHOWN, HOLES NOT SHOWN)



TYPICAL GUSSET PLATE CONNECTION



TYPICAL TEE TO GUSSET PLATE CONNECTION

NOTES:

ALL STRUCTURAL STEEL SHALL BE AASHTO M270 GRADE 50W AND PAINTED IN ACCORDANCE WITH SYSTEM 5 OR SYSTEM 6 OF THE STRUCTURAL STEEL SHOP COATINGS PROGRAMS AND SECTION 442-8 OF THE STANDARD SPECIFICATIONS UNLESS OTHERWISE NOTED ON THE PLANS.

ALL DIMENSIONS SHOWN ARE HORIZONTAL OR VERTICAL, UNLESS OTHERWISE NOTED.

ALL FIELD CONNECTIONS TO BE 7/8" DIA. F3125 GRADE A325 HIGH STRENGTH BOLTS, UNLESS OTHERWISE NOTED.

ENDS OF GIRDERS SHALL BE PLUMB.

STUDS ON GIRDERS MAY BE SHIFTED UP TO 1 INCH IF NECESSARY TO CLEAR FLANGE SPLICE WELD.

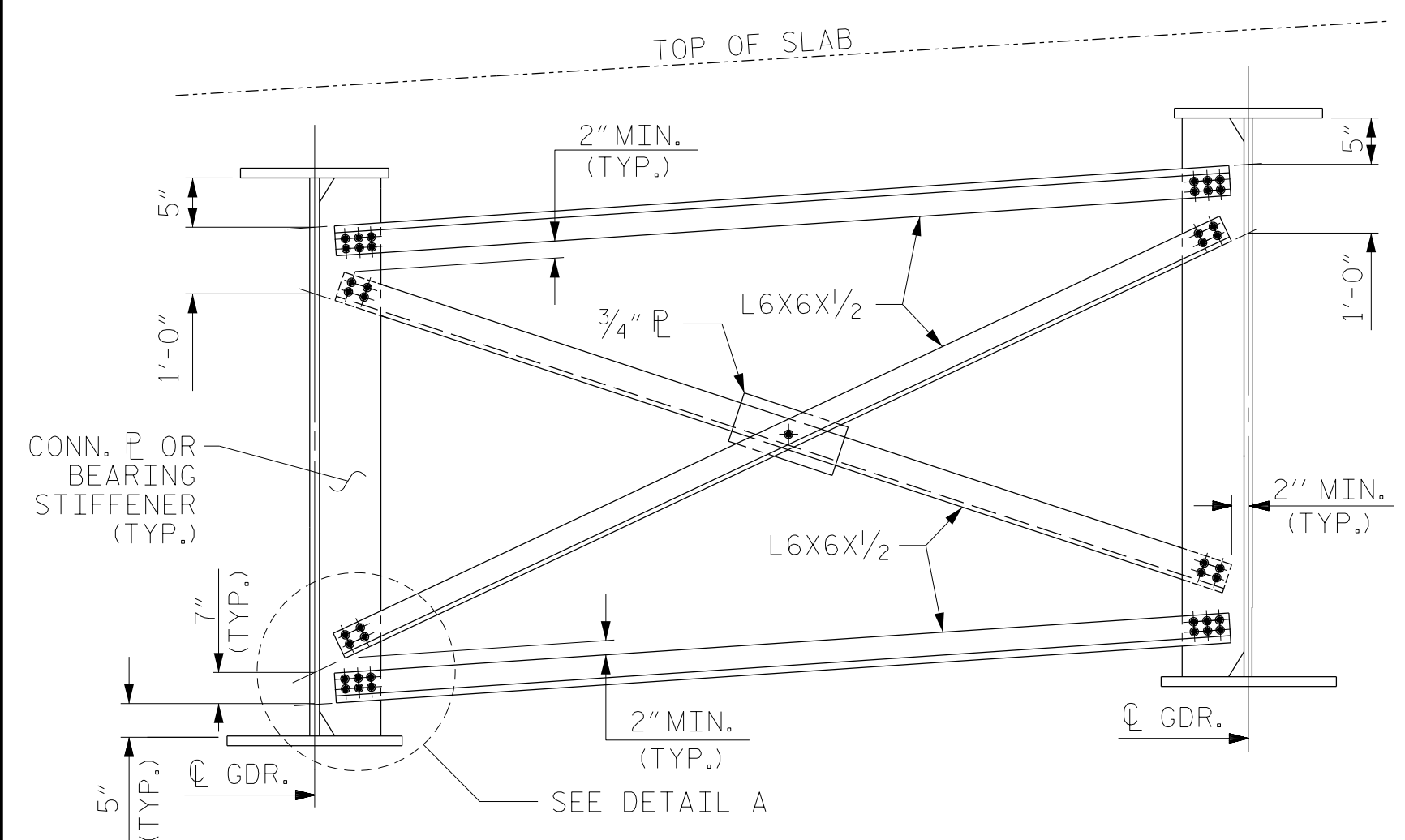
TENSION ON THE ASTM F3125 GRADE A325 BOLTS SHALL BE CALIBRATED USING DIRECT TENSION INDICATOR WASHERS IN ACCORDANCE WITH ARTICLE 440-8 OF THE STANDARD SPECIFICATIONS.

STRUCTURAL STEEL ERECTION IN A CONTINUOUS UNIT SHALL BE COMPLETE BEFORE FALSEWORK OR FORMS ARE PLACED ON THE UNIT.

PERMITTED FLANGE AND WEB SHOP SPLICES SHALL NOT BE LOCATED WITHIN 15 FEET OF MAXIMUM DEAD LOAD DEFLECTION NOR WITHIN 15 FEET OF INTERMEDIATE BEARINGS. KEEP 2 FEET MINIMUM BETWEEN WEB AND FLANGE SHOP SPLICES. KEEP 6" MINIMUM BETWEEN CONNECTOR PLATE OR TRANSVERSE STIFFENER WELDS AND WEB OR FLANGE SHOP SPLICES.

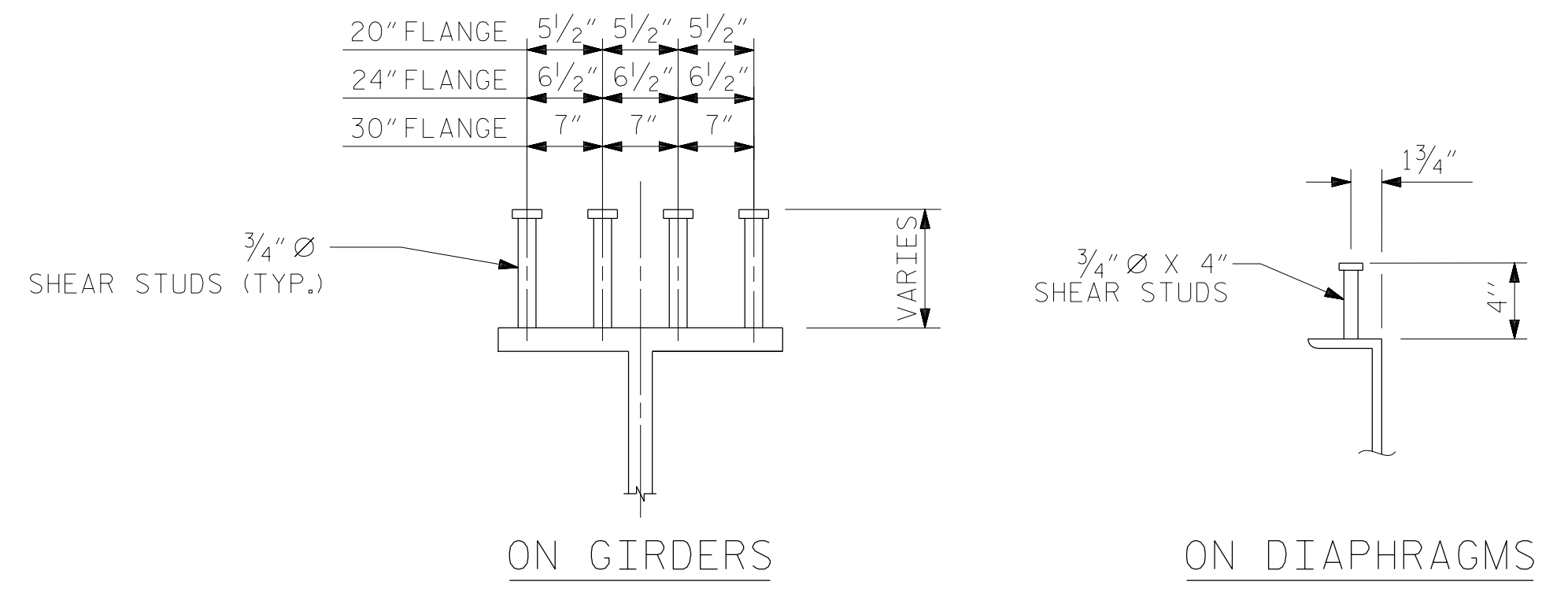
BEARING STIFFENERS ARE TO BE PLACED NORMAL TO THE WEB OF THE GIRDER AND SHALL BE PLUMB.

FABRICATOR SHALL DETAIL CROSSFRAME MEMBERS AND CONNECTIONS FOR STEEL DEAD LOAD FIT-UP. GIRDERS SHALL BE PLUMB AFTER THE FULL AMOUNT OF DEAD LOAD IS APPLIED.



TYPICAL INTERMEDIATE CROSSFRAME

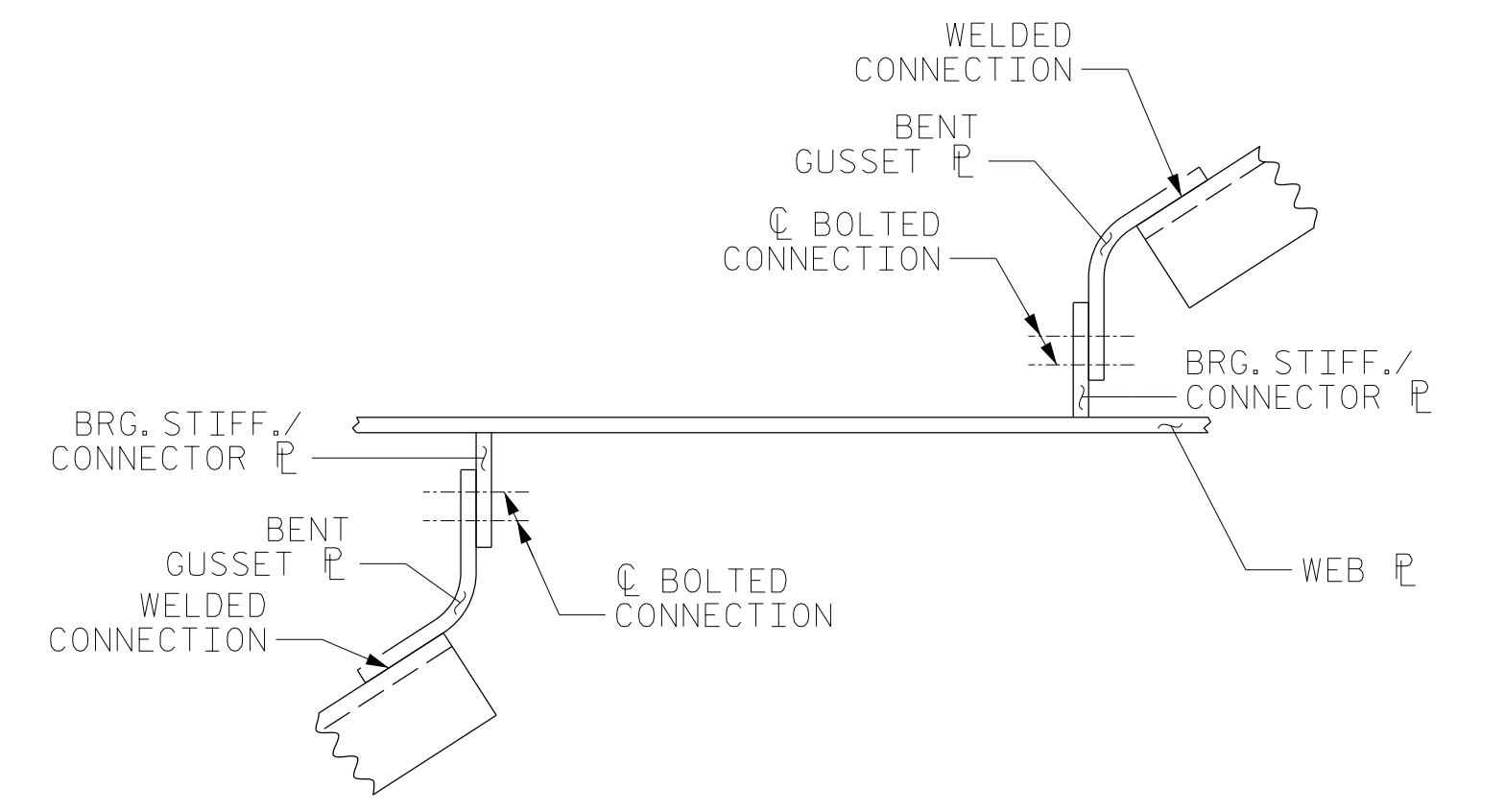
WELD TERMINATION DETAILS



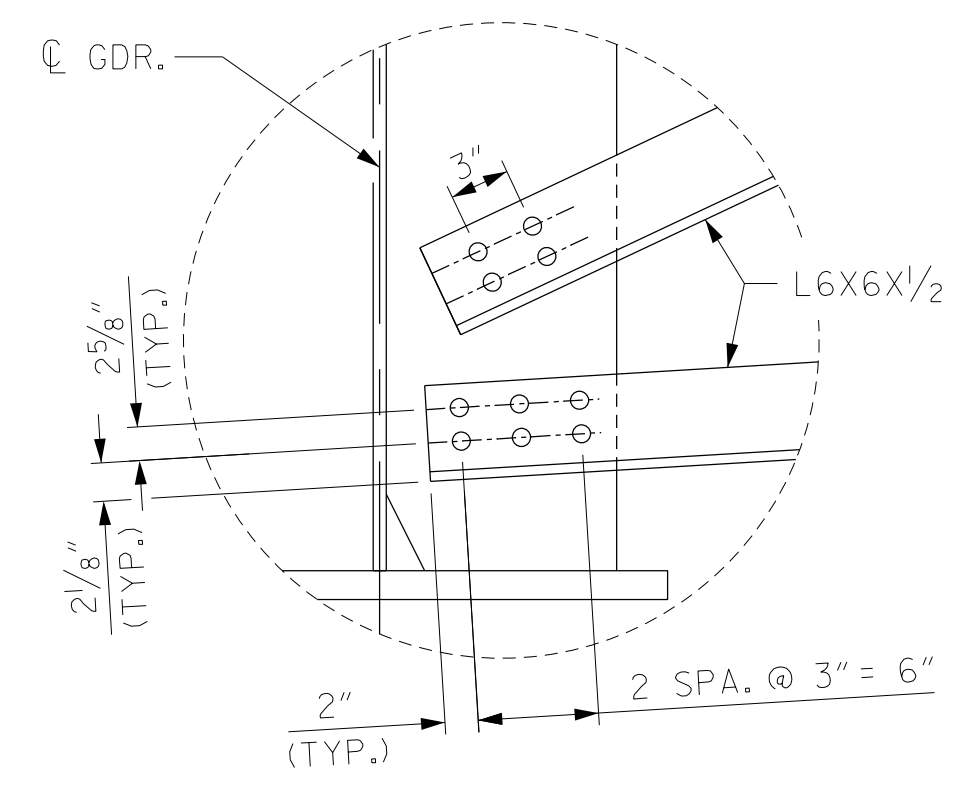
ON GIRDERS **ON DIAPHRAGMS**

FOR STUD HEIGHTS, SEE STRUCTURAL STEEL DETAILS SHEET 1 OF 5. SHEAR STUDS ARE CENTERED ABOUT Q GIRDER

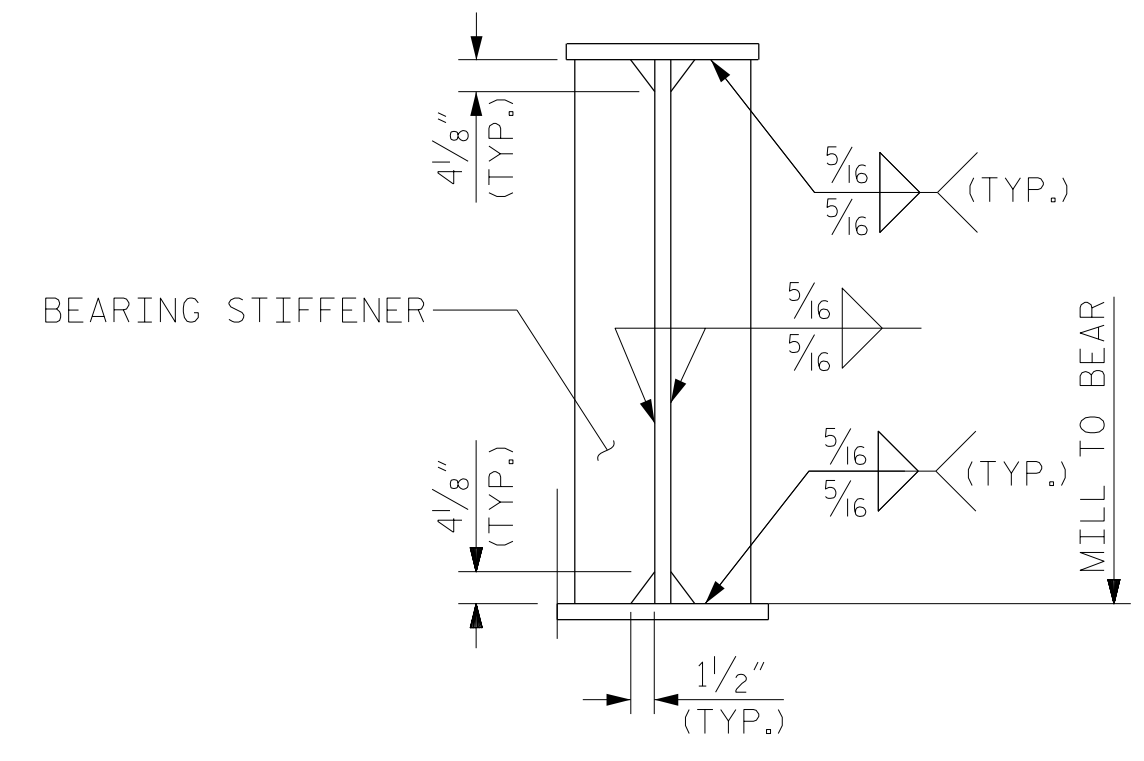
SHEAR STUD DETAILS



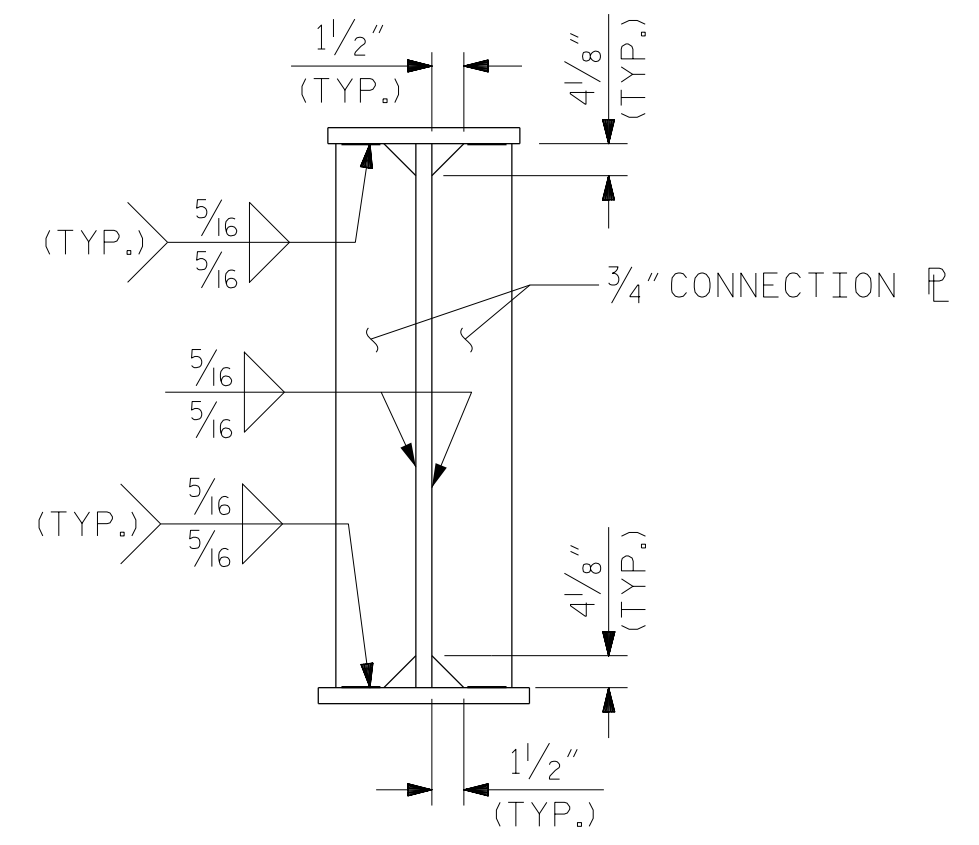
BENT GUSSET PL



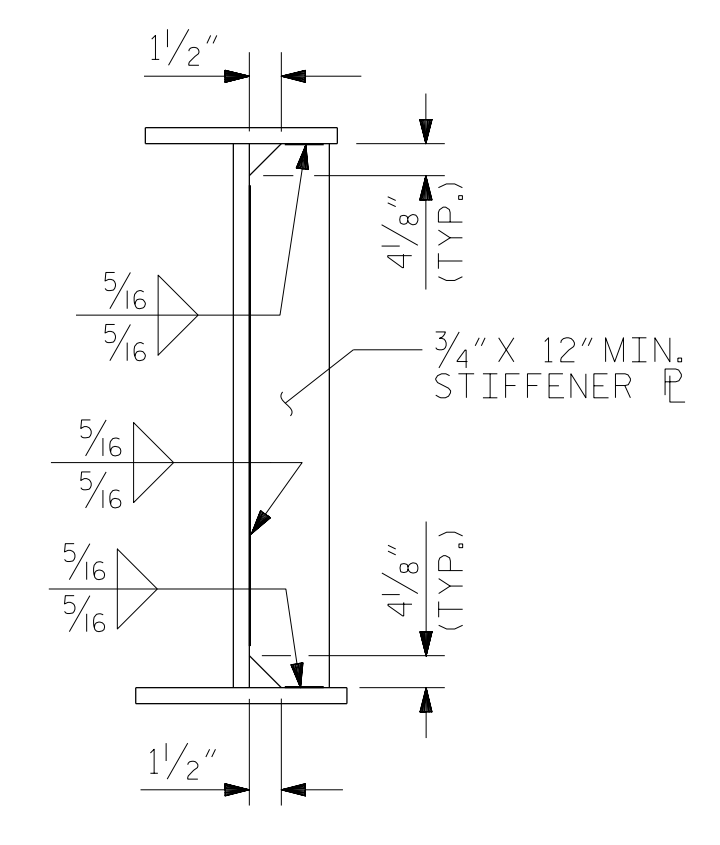
DETAIL A



BEARING STIFFENER



CONNECTOR PLATE



INTERMEDIATE STIFFENER

EXTERIOR GIRDER SHOWN

PROJECT NO. U-2579AB
FORSYTH COUNTY
 STATION: 23+43.03 -Y16-

SHEET 2 OF 5

RS&H
 RS&H Architects-Engineers-Planners, Inc.
 8521 Six Forks Road, Suite 400
 919-926-4100 FAX 919-846-9080
 www.rsandh.com
 North Carolina License No. 50737-F-0403-C-28

STATE OF NORTH CAROLINA
 DEPARTMENT OF TRANSPORTATION
 RALEIGH
 SUPERSTRUCTURE
 STRUCTURAL STEEL
 DETAILS

REVISIONS						SHEET NO.
NO.	BY:	DATE:	NO.	BY:	DATE:	SHEET NO.
1			3			TOTAL SHEETS
2			4			48

DRAWN BY : TRM DATE : 10/2019
 CHECKED BY : MAL DATE : 12/2019
 DESIGN ENGINEER OF RECORD: JMR DATE : 12/2019

DOCUMENT NOT CONSIDERED FINAL UNLESS ALL SIGNATURES COMPLETED