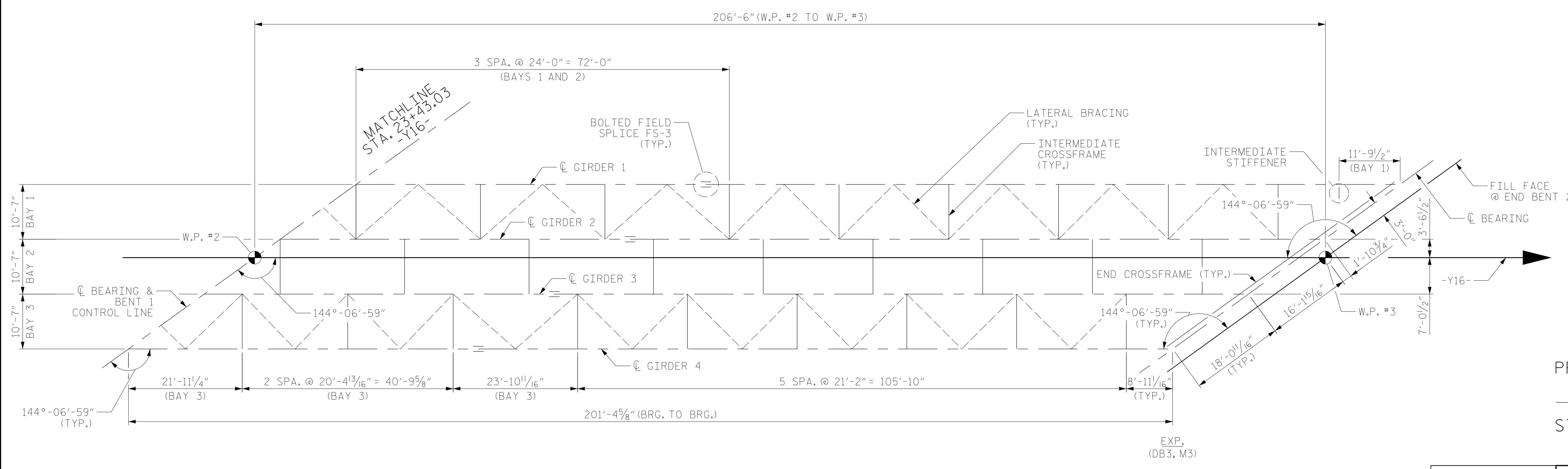


FRAMING PLAN - SPAN A



FRAMING PLAN - SPAN B

NOTES:
 FOR DIMENSIONS TO ϕ BOLTED FIELD SPLICE, SEE "STRUCTURAL STEEL DETAILS", SHEET 1 OF 5.
 CROSSFRAME SPACINGS ARE TYPICAL EACH BAY, UNLESS NOTED OTHERWISE.
 FOR PLACEMENT OF END CROSSFRAMES, SEE "TYPICAL SECTION" SHEETS.
 FOR DETAILS ABOUT LATERAL BRACING, SEE "LATERAL BRACING" SHEET.
 IN THE EVENT OF CONFLICT WITH LATERAL BRACING COMPONENT AND GIRDER DETAILS, LATERAL BRACING CONNECTION MAY BE SHIFTED SLIGHTLY.

| | | | |
|----------------------------|-----|--------|---------|
| DRAWN BY : | NSC | DATE : | 10/2019 |
| CHECKED BY : | MAL | DATE : | 12/2019 |
| DESIGN ENGINEER OF RECORD: | JMR | DATE : | 12/2019 |

PROJECT NO. U-2579AB
FORSYTH COUNTY
 STATION: 23+43.03 -Y16-



RS&H
 RS&H Architects-Engineers-Planners, Inc.
 8521 Six Forks Road, Suite 400
 919-926-4100 FAX 919-846-9080
 www.rsandh.com
 North Carolina License No. 50737-F-0403-C-28

| | | | | | |
|--------------------------------------------------------------------|-----|-------|-----|-----|--------------------|
| STATE OF NORTH CAROLINA DEPARTMENT OF TRANSPORTATION RALEIGH | | | | | |
| SUPERSTRUCTURE FRAMING PLAN SPANS A & B | | | | | |
| REVISIONS | | | | | |
| NO. | BY: | DATE: | NO. | BY: | DATE: |
| 1 | | | 3 | | |
| 2 | | | 4 | | |
| SHEET NO. ST-11 | | | | | TOTAL SHEETS 48 |

DOCUMENT NOT CONSIDERED FINAL UNLESS ALL SIGNATURES COMPLETED