

PLAN OF SPAN A

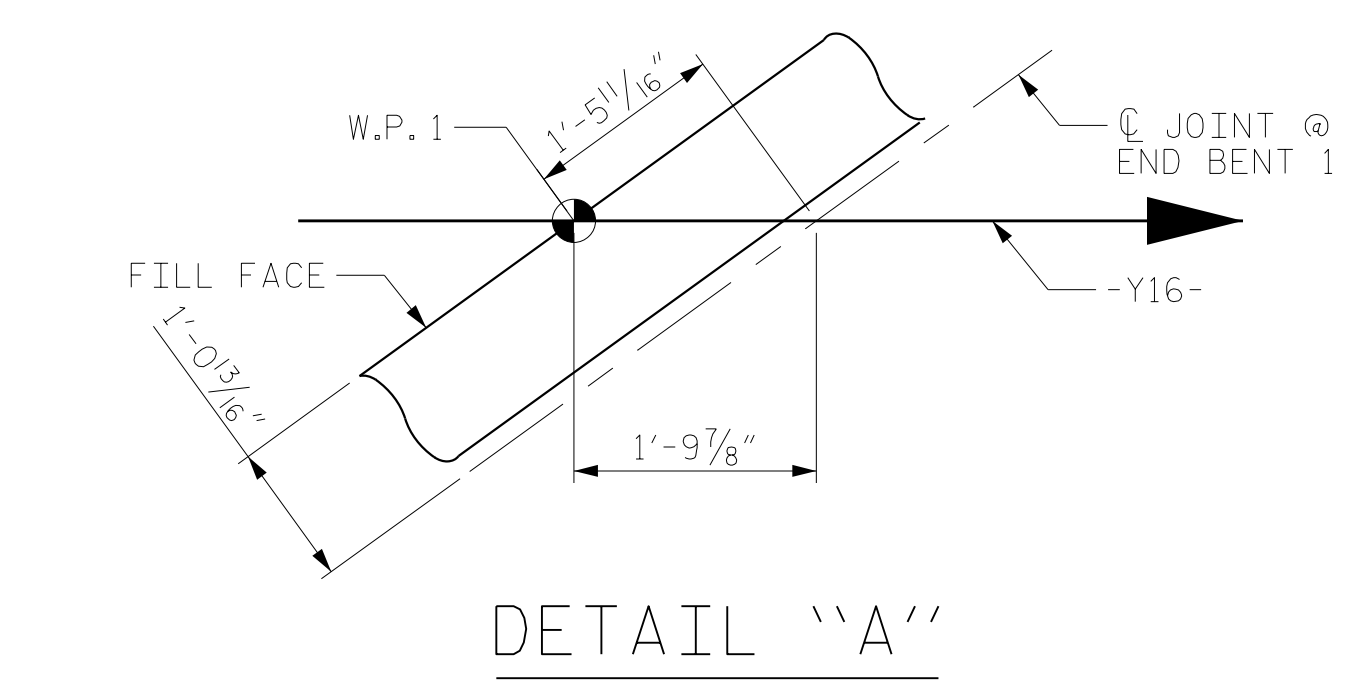
* DIMENSIONS MEASURED ALONG C/J JOINT

NOTES:

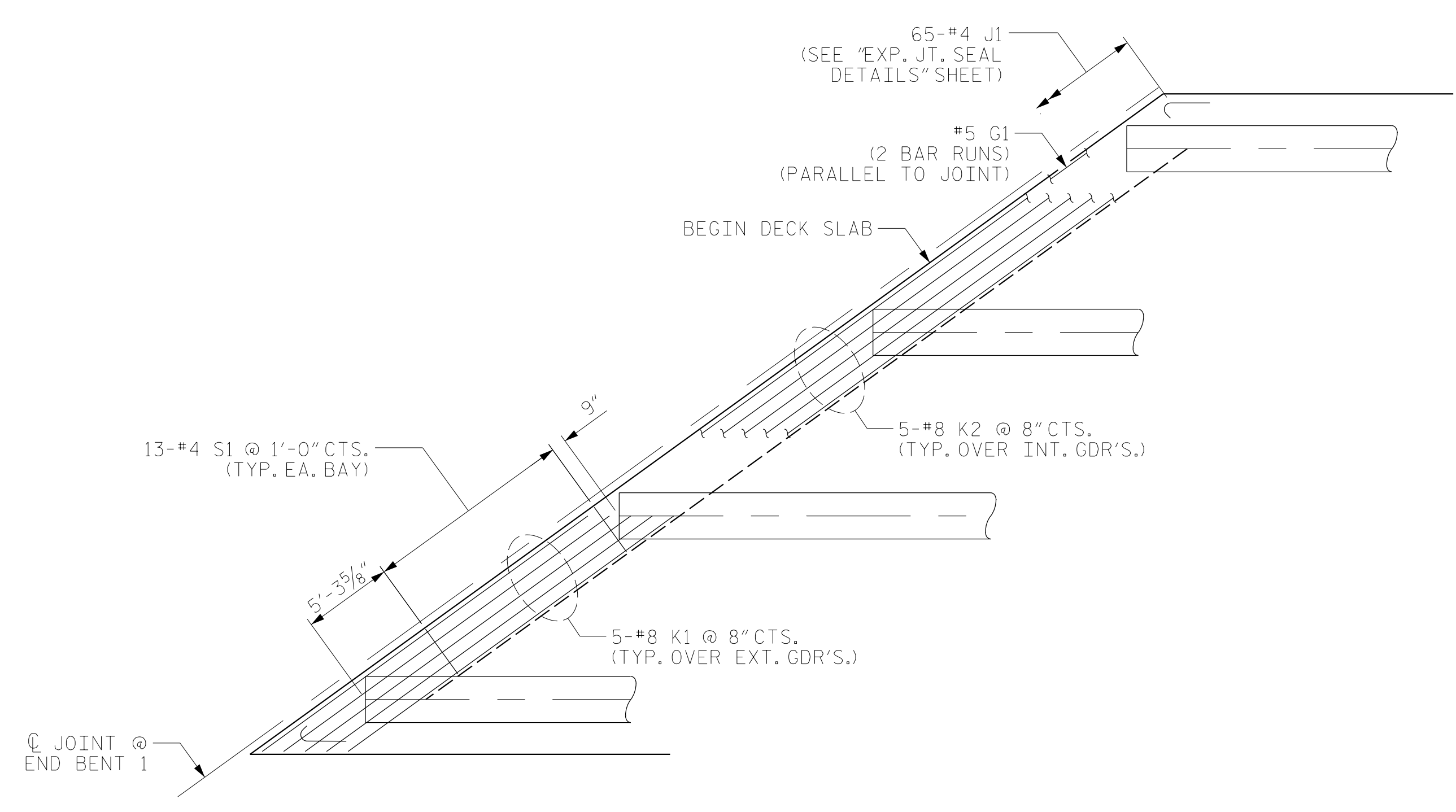
- FOR SPLICE LENGTHS NOT SHOWN, REFER TO THE MINIMUM SPLICE LENGTH TABLE ON "SUPERSTRUCTURE BILL OF MATERIAL" SHEET 1 OF 2.
- FOR END BENT DIAPHRAGM BARS, SEE "TYPICAL SECTION DETAILS".
- INTERMEDIATE DIAPHRAGMS NOT SHOWN FOR CLARITY, FOR LOCATIONS, SEE "FRAMING PLAN" SHEET.
- FOR PARAPET REINFORCING STEEL, SEE PARAPET SHEETS.
- FOR SIDEWALK REINFORCING STEEL, SEE "SIDEWALK DETAILS" SHEET.
- FOR POURING SEQUENCE, SEE "SUPERSTRUCTURE BILL OF MATERIAL" SHEET 2 OF 2.
- LIMITS OF THICKENED END SLAB EXTEND TO OUTSIDE EDGE OF DECK.
- T.O.S. = TOP OF SLAB
- B.O.S. = BOTTOM OF SLAB

PROJECT NO. U-2579AB
 FORSYTH COUNTY
 STATION: 23+43.03 -Y16-

SHEET 1 OF 2

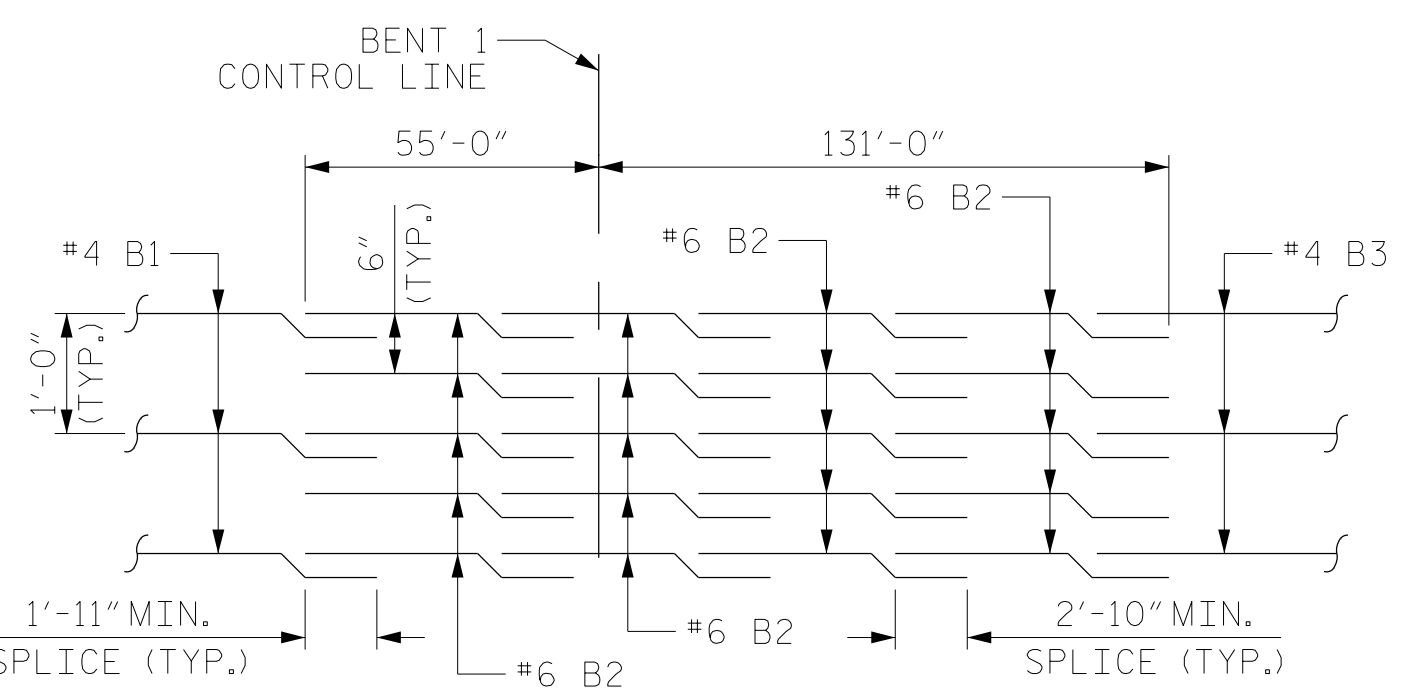


DETAIL "A"



END BENT 1 DIAPHRAGM REINFORCING DETAILS

#5 G1 MAY BE SHIFTED SLIGHTLY, AS NECESSARY, TO CLEAR REINFORCING STEEL AND STIRRUPS



TOP OF SLAB REINFORCING STEEL LAYOUT

DRAWN BY :	MRA	DATE :	12/2019
CHECKED BY :	JMR	DATE :	12/2019
DESIGN ENGINEER OF RECORD:	JMR	DATE :	12/2019

DOCUMENT NOT CONSIDERED FINAL UNLESS ALL SIGNATURES COMPLETED

STATE OF NORTH CAROLINA DEPARTMENT OF TRANSPORTATION RALEIGH						SHEET NO. S7-8	
SUPERSTRUCTURE PLAN OF SPAN A						TOTAL SHEETS 48	
REVISIONS							
NO.	BY:	DATE:	NO.	BY:	DATE:		
1			3				
2			4				