

NOTES:

PVC DECK DRAINS SHALL BE PAINTED WITH TWO COATS OF BROWN PRIMER MEETING THE REQUIREMENTS OF ARTICLE 1080-09 OF THE STANDARD SPECIFICATIONS. EACH COATS SHALL BE 2 DRY MILLS THICK. DECK DRAINS SHALL BE ROUGHENED PRIOR TO PAINTING. NO SEPARATE PAYMENT SHALL BE MADE FOR PAINTING PVC DECK DRAINS AS THIS IS CONSIDERED INCIDENTAL TO THE PAY ITEM FOR REINFORCED CONCRETE SLAB.

TOP OF FLOOR DRAIN TO BE SET $\frac{3}{8}$ " BELOW SURFACE OF SLAB.

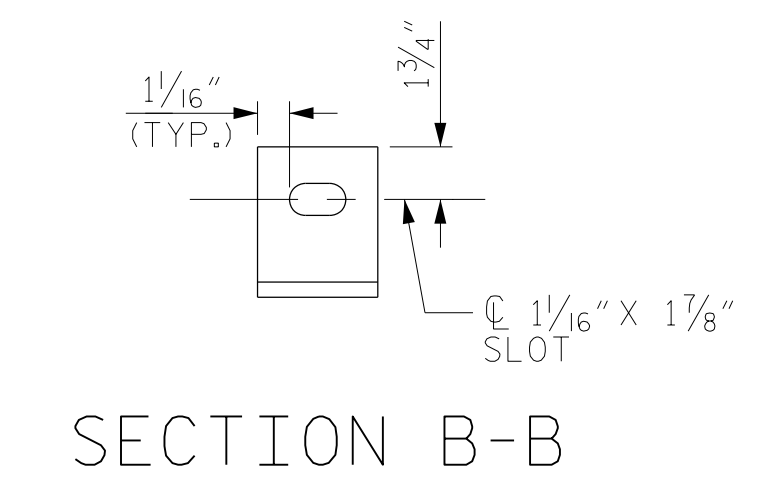
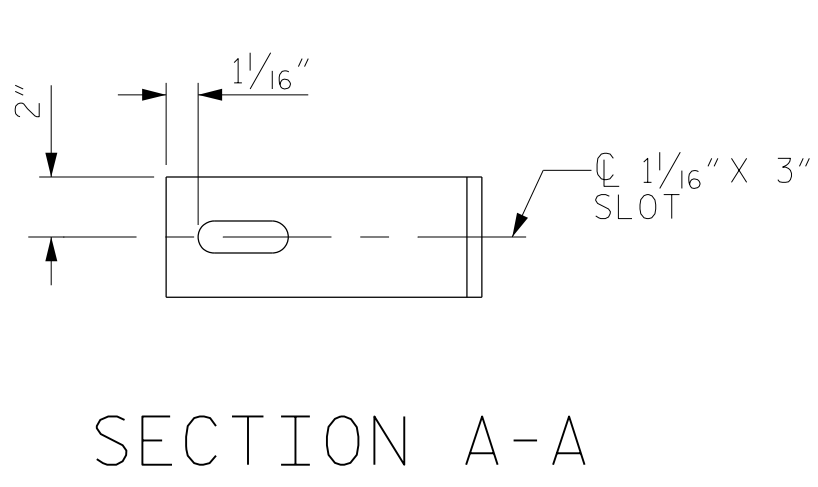
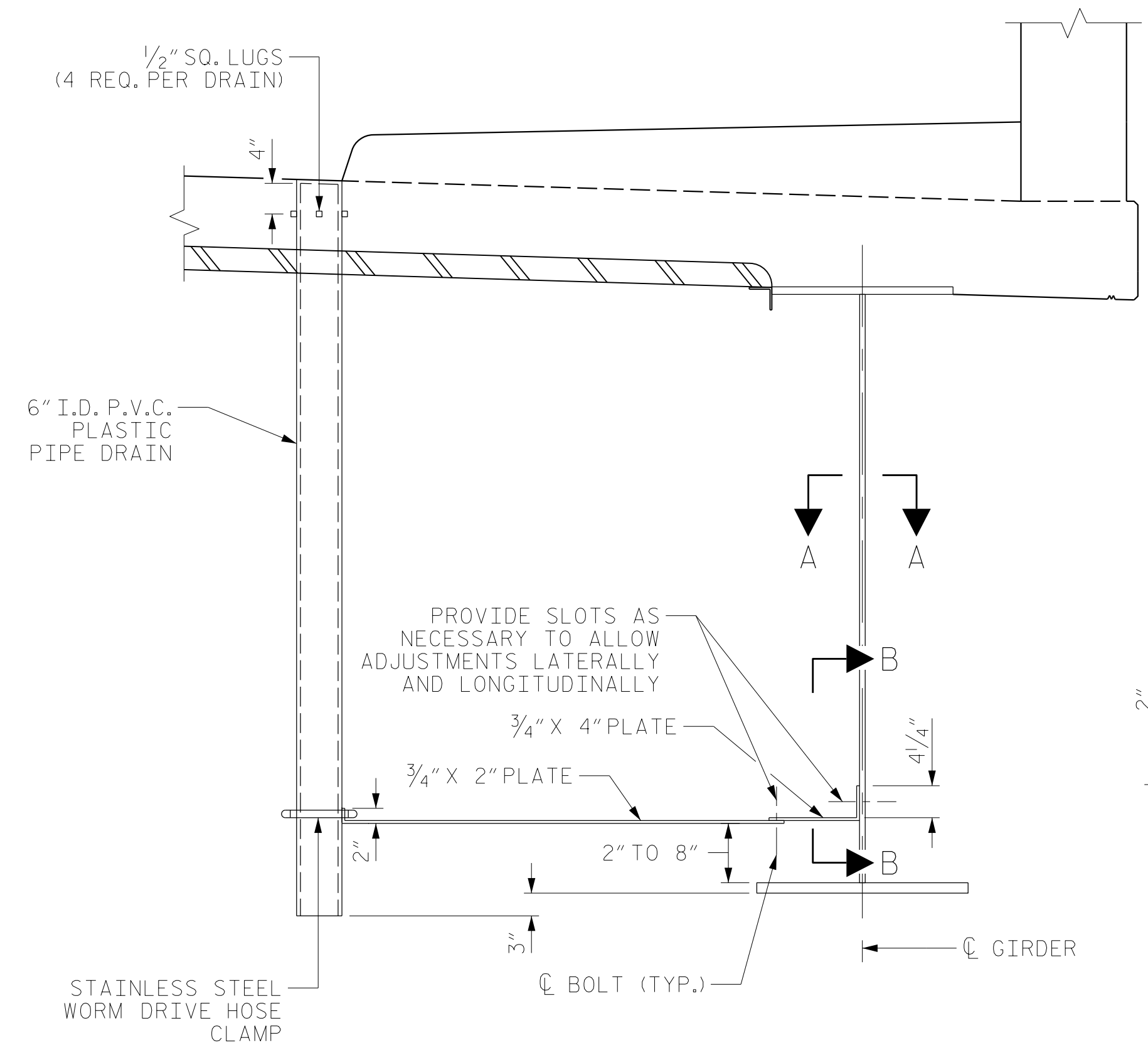
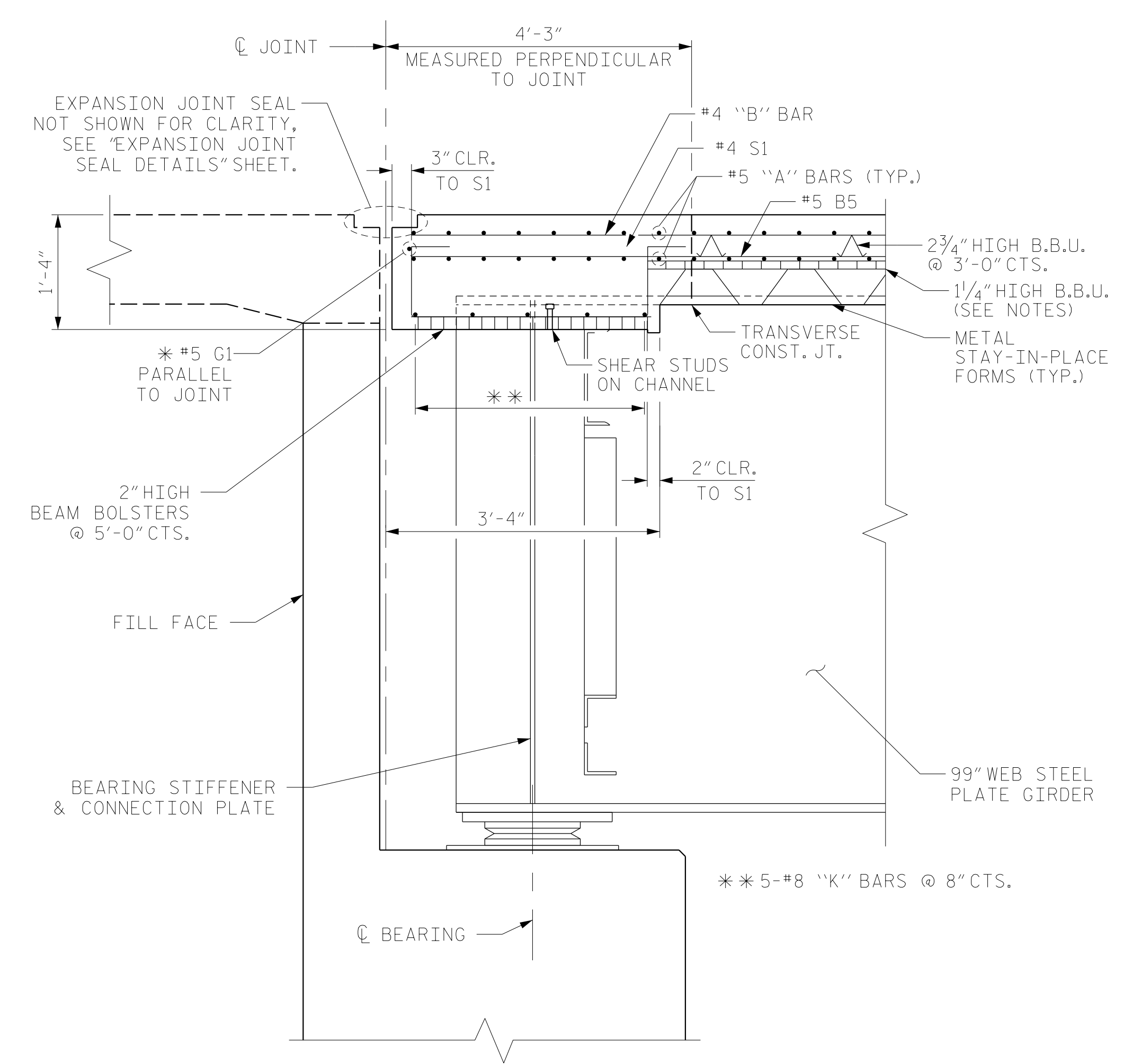
4 - $\frac{1}{2}$ " SQUARE LUGS TO BE GLUED TO THE PVC PLASTIC PIPE AT EQUAL SPACES AROUND THE PIPE DRAIN APPROXIMATELY 4" FROM THE TOP OF THE PIPE

BOLT SIZE TO BE SAME AS DIAPHRAGMS AND CROSSFRAME CONNECTIONS. STAINLESS STEEL WORM DRIVE HOSE CLAMP SHALL BE COMMERCIAL QUALITY.

THE 6" DIA. PVC PIPE AND FITTINGS SHALL BE SCHEDULE 40 AND CONFORM TO ASTM D1785.

PLATES SHALL CONFORM TO AASHTO M270 GRADE 50W STEEL OR APPROVED EQUAL.

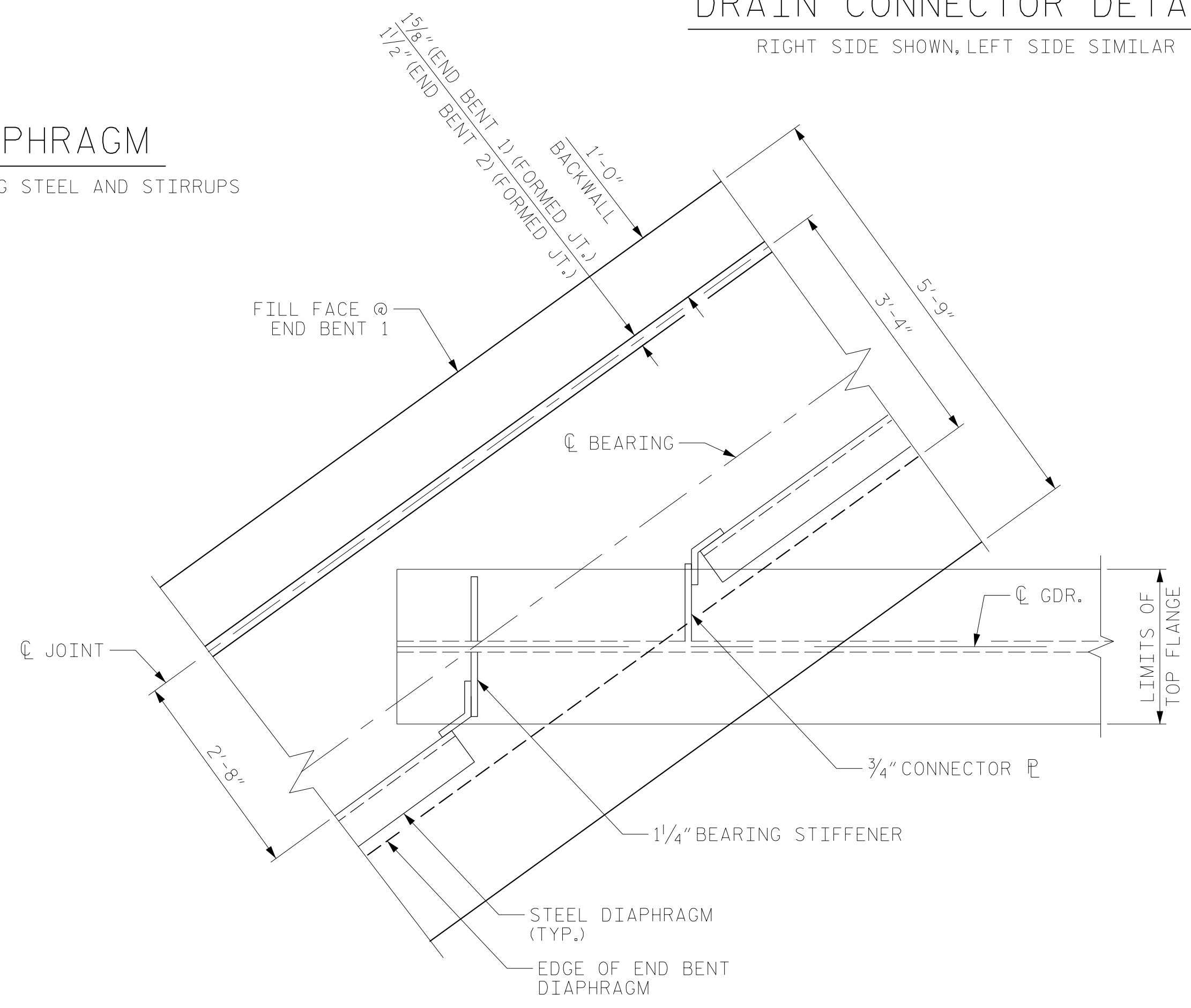
FOR ADDITIONAL NOTES, SEE SHEET 1 OF 2.



DRAIN CONNECTOR DETAIL
RIGHT SIDE SHOWN, LEFT SIDE SIMILAR

SECTION THROUGH END BENT DIAPHRAGM

* #5 G1 MAY BE SHIFTED SLIGHTLY, AS NECESSARY, TO CLEAR REINFORCING STEEL AND STIRRUPS
END BENT 1 SHOWN, END BENT 2 SIMILAR



PLAN OF END BENT DIAPHRAGM
END BENT 1 SHOWN, END BENT 2 SIMILAR

PROJECT NO. U-2579AB
FORSYTH COUNTY
STATION: 23+43.03 -Y16-

SHEET 2 OF 2

STATE OF NORTH CAROLINA DEPARTMENT OF TRANSPORTATION RALEIGH						SHEET NO.
SUPERSTRUCTURE TYPICAL SECTION DETAILS						S7-7
REVISIONS						TOTAL SHEETS
NO.	BY:	DATE:	NO.	BY:	DATE:	48
1			3			
2			4			

DRAWN BY :	MRA	DATE :	12/2019
CHECKED BY :	JMR	DATE :	12/2019
DESIGN ENGINEER OF RECORD:	JMR	DATE :	12/2019

DOCUMENT NOT CONSIDERED FINAL UNLESS ALL SIGNATURES COMPLETED