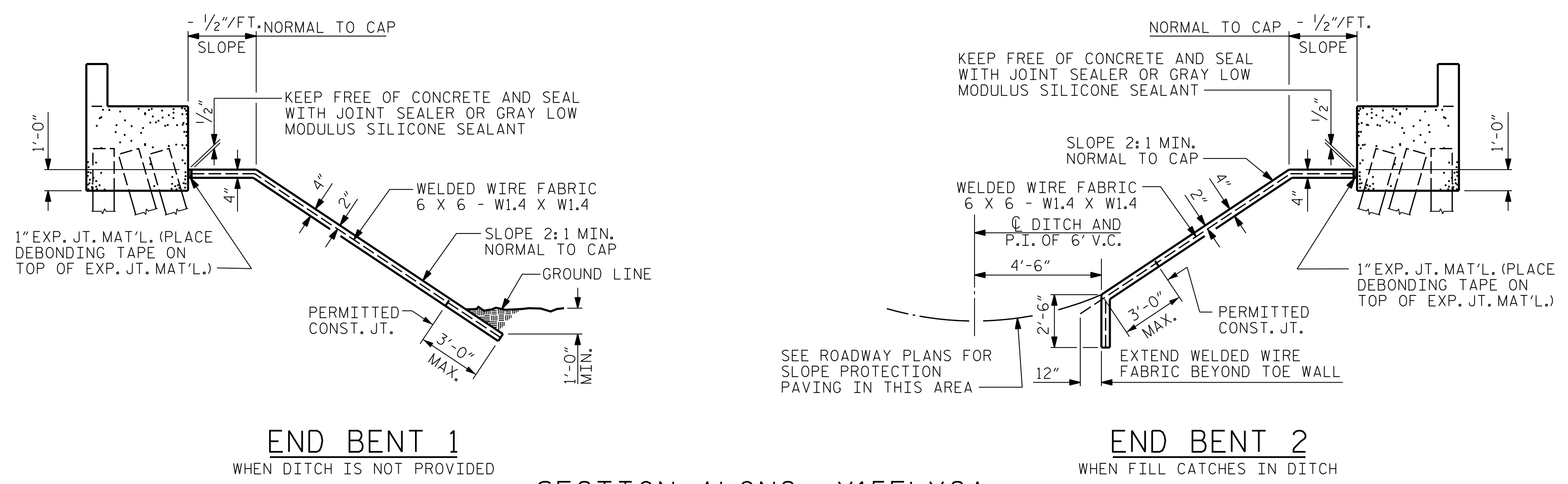
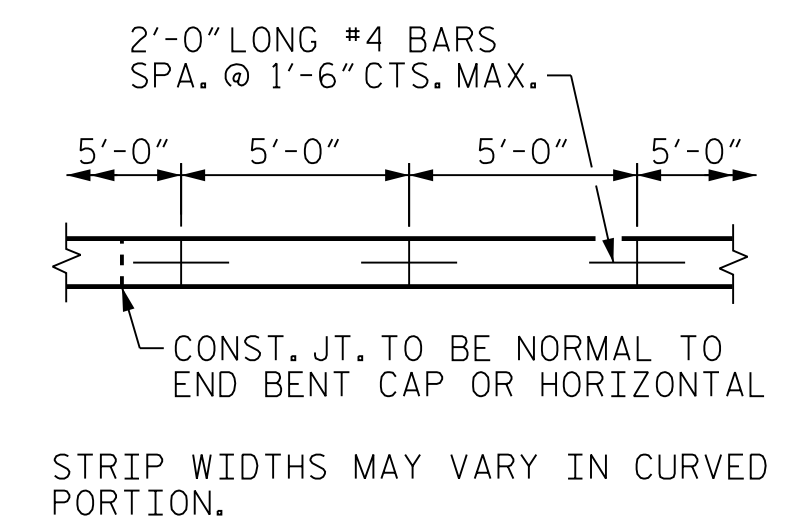


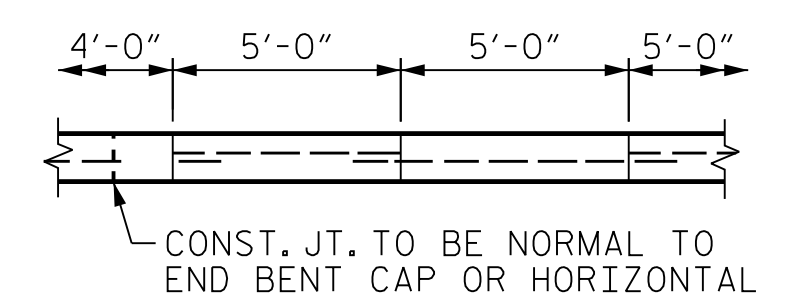
PLAN



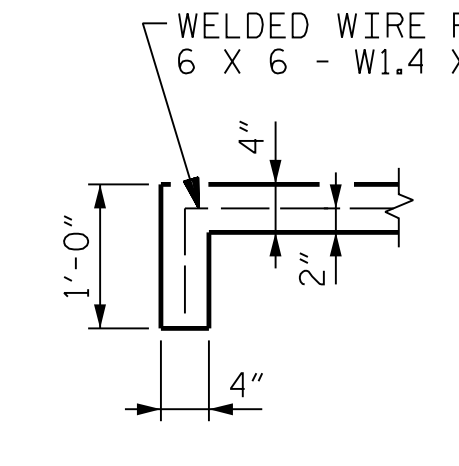
SECTION ALONG -Y15FLYCA-



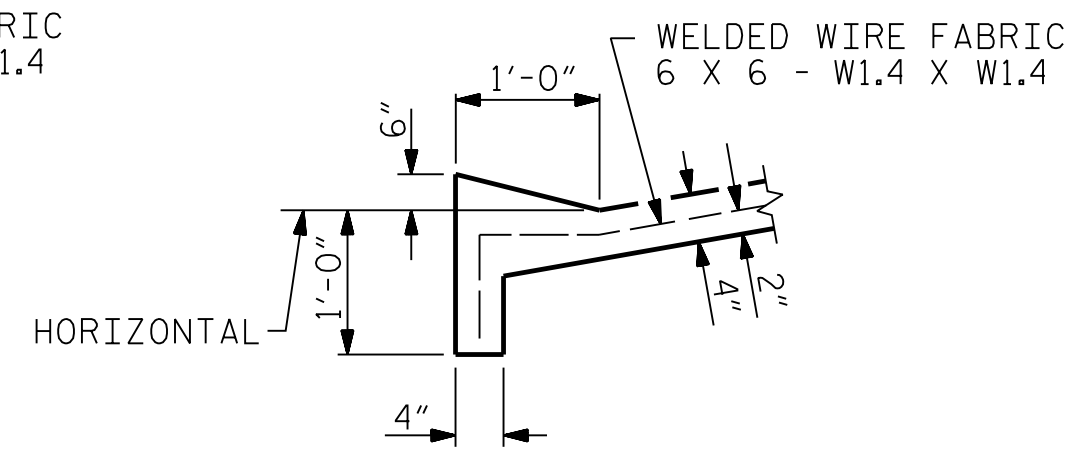
POURING DETAIL



OPTIONAL POURING DETAIL



SECTION A-A



SECTION B-B

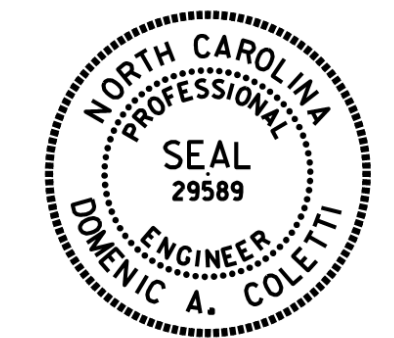
NOTES
 SLOPE PROTECTION SHALL BE PLACED UNDER THE ENDS OF THE BRIDGE AS SHOWN IN THE DETAILS. STRAIGHT EDGING WILL NOT BE REQUIRED UNLESS, IN THE OPINION OF THE ENGINEER, VISUAL INSPECTION INDICATES A NEED FOR IT. MEASUREMENT AND PAYMENT SHALL BE PRESCRIBED IN SECTION 462 OF THE STANDARD SPECIFICATIONS.
 SLOPE PROTECTION SHALL CONSIST OF 4" POURED-IN-PLACE CONCRETE PAVING AS SHOWN IN THE DETAILS ON THIS SHEET. CONCRETE SHALL BE CLASS "B". THE CONCRETE SURFACE SHALL BE FLOATED WITH A WOODEN FLOAT AND FINISHED. WELDED WIRE FABRIC REINFORCING SHALL BE 6 X 6 - W1.4 X W1.4, 60" WIDE. SLOPE PROTECTION SHALL BE POURED IN 5' STRIPS AS SHOWN IN THE "POURING DETAIL" WITH 2'-0" LONG #4 BARS PLACED ALONG THE SLOPE BETWEEN STRIPS AT 1'-6" MAXIMUM SPACING. SLOPE PROTECTION MAY BE POURED IN ALTERNATE 4' AND 5' STRIPS AS SHOWN IN THE "OPTIONAL POURING DETAIL" WITH ADJACENT RUNS OF WELDED WIRE FABRIC LAPPING AT LEAST 6". THE COST OF THE WELDED WIRE FABRIC AND #4 BARS, IF USED, SHALL BE INCLUDED IN THE CONTRACT UNIT PRICE BID PER SQUARE YARD FOR SLOPE PROTECTION.

BRIDGE @ STA. 58+33.94 -Y15FLYCA-	4 INCH SLOPE PROTECTION SQUARE YARDS	WELDED WIRE FABRIC 60 INCHES WIDE APPROX. L.F.
END BENT 1	417	750
END BENT 2	245	441

* QUANTITY SHOWN IS BASED ON 5'-0" POURS.

PROJECT NO. U-2579AB
 FORSYTH COUNTY
 STATION: 58+33.94 -Y15FLYCA-

STATE OF NORTH CAROLINA
 DEPARTMENT OF TRANSPORTATION
 RALEIGH
CONCRETE SLOPE PROTECTION DETAILS



10/15/2021

REVISIONS						SHEET NO. 506-126 TOTAL SHEETS 129
NO.	BY:	DATE:	NO.	BY:	DATE:	
1	--	--	3	--	--	
2	--	--	4	--	--	

PLOT DRIVER: NCDOT... PENTABLE: NCDOT STRUCTURES DEFAULT PEN.tbl
 USER: PPETERSO DATE: 10/14/2021 TIME: 5:25:58 PM
 FILE: ... \CONCRE

DES BY: S. NIFONG	DATE: 10/19	DWG BY: B. PETERSON	DATE: 07/19
DES CHK: M. NEIHEISEL	DATE: 10/19	CHK BY: M. NEIHEISEL	DATE: 10/19

DOCUMENT NOT CONSIDERED FINAL UNLESS ALL SIGNATURES COMPLETED