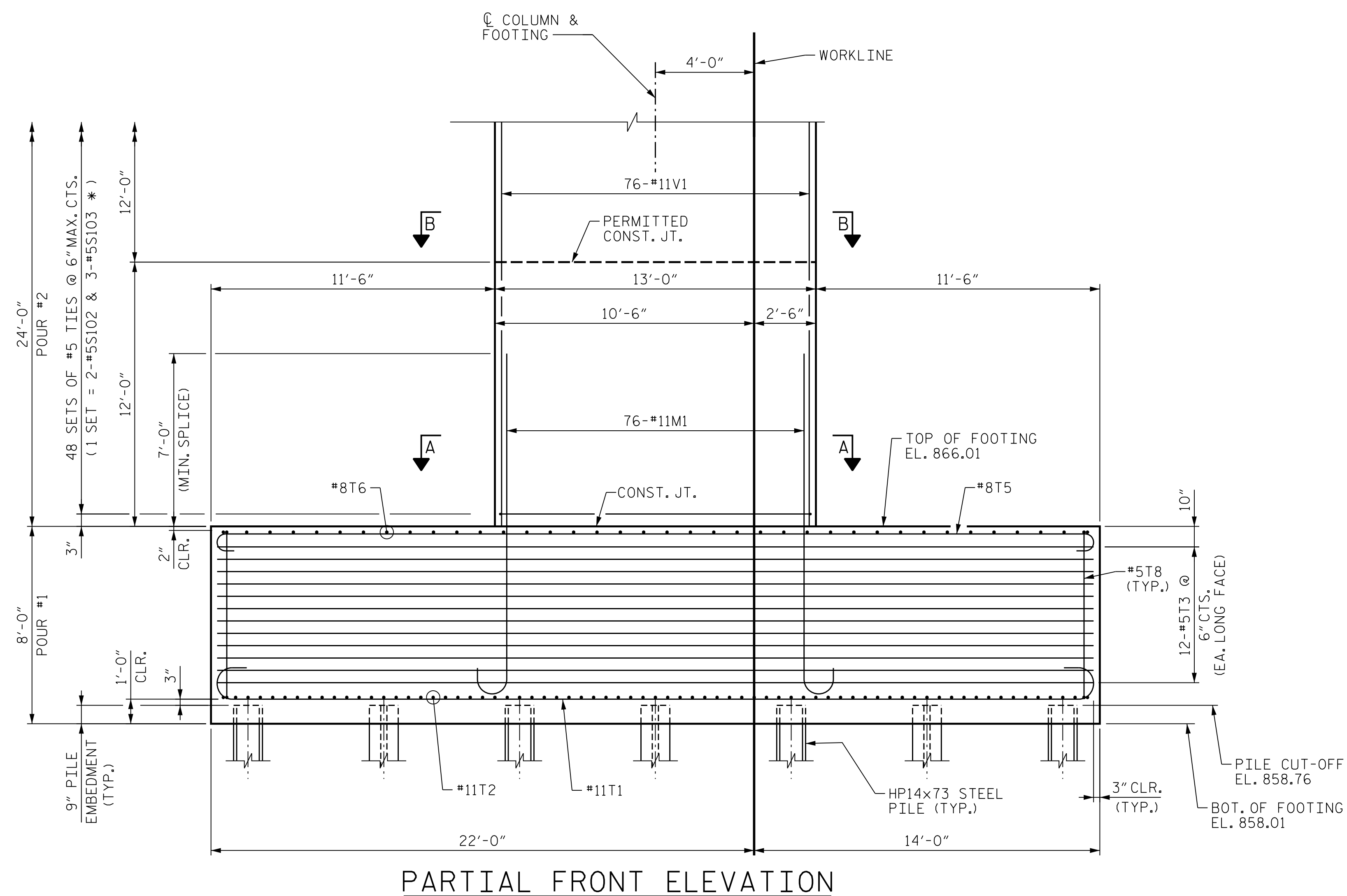


NOTES

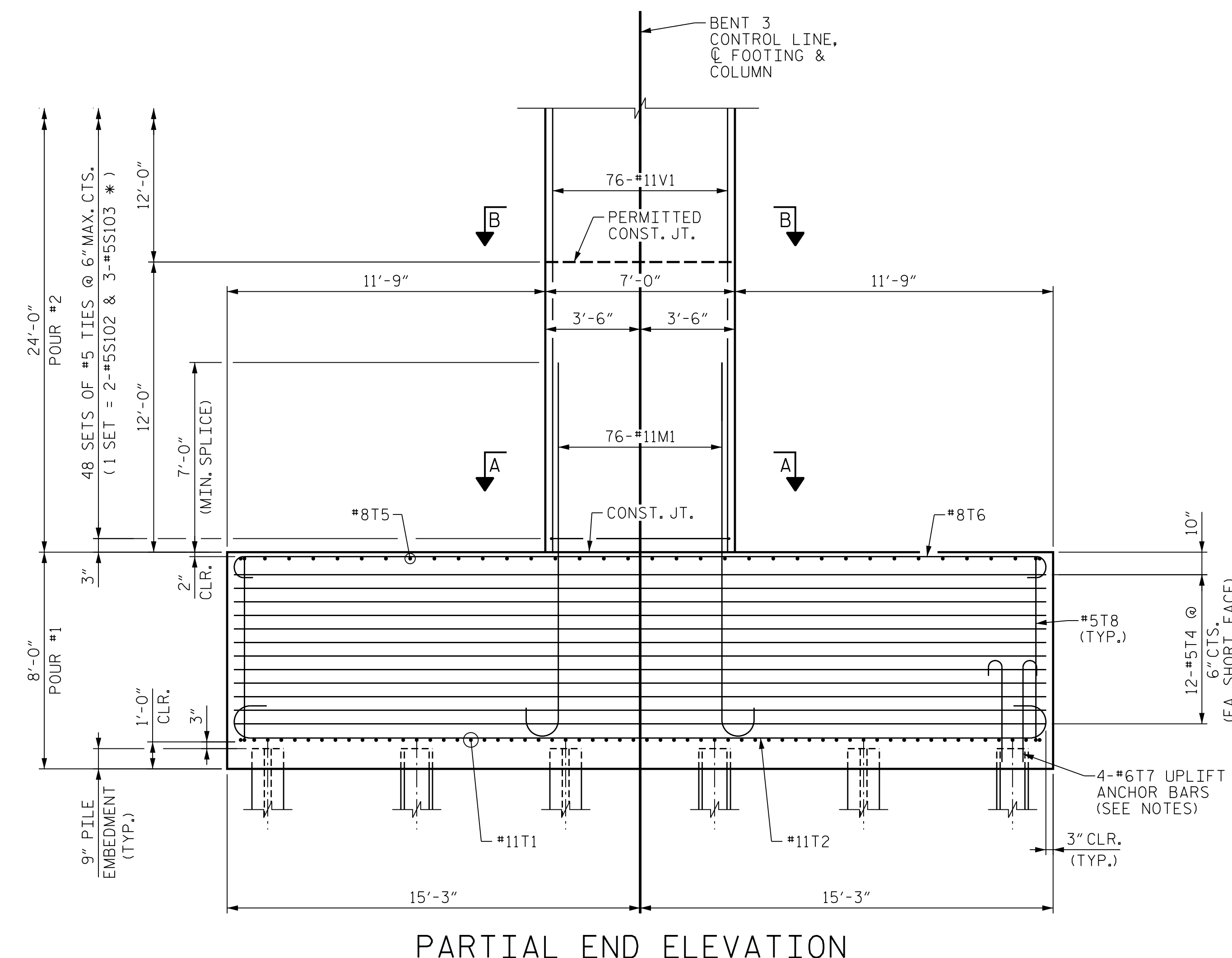
FOR FOOTING PLAN, SECTION A-A AND SECTION B-B, SEE "SUBSTRUCTURE BENT 3 FOOTING & COLUMN DETAILS", SHEET 3 OF 6.

4-#6T7 UPLIFT ANCHOR BARS AT NOTED PILES - SEE "SUBSTRUCTURE BENT 3 FOOTING & COLUMN DETAILS", SHEET 3 OF 6 FOR LOCATIONS.

FOR ADDITIONAL NOTES AND PILE UPLIFT ANCHOR DETAIL, SEE "SUBSTRUCTURE BENT 1 ELEVATIONS", SHEET 1 OF 6.



PARTIAL FRONT ELEVATION



PARTIAL END ELEVATION

* INVERT ORIENTATION OF ALTERNATE #5S103 TIES

PROJECT NO. U-2579AB
FORSYTH COUNTY
STATION: 58+33.94 -Y15FLYCA-

SHEET 1 OF 6

STATE OF NORTH CAROLINA
DEPARTMENT OF TRANSPORTATION
RALEIGH

SUBSTRUCTURE
BENT 3
ELEVATIONS



Dominic A. Coletti 10/15/2021

REVISIONS

NO.	BY:	DATE:	NO.	BY:	DATE:
1	--	--	3	--	--
2	--	--	4	--	--

SHEET NO. S06-095
TOTAL SHEETS 129



DOCUMENT NOT CONSIDERED FINAL UNLESS ALL SIGNATURES COMPLETED

PLOT DRIVER: NCDOT... PENTABLE: NCDOT... USER: PPETERSO... DATE: 10/14/2021... FILE: ...SUBSTR

DES BY: K. OLIVER	DATE: 11/19	DWG BY: B. PETERSON	DATE: 12/19
DES CHK: N. LIU	DATE: 11/19	CHK BY: N. LIU	DATE: 01/20