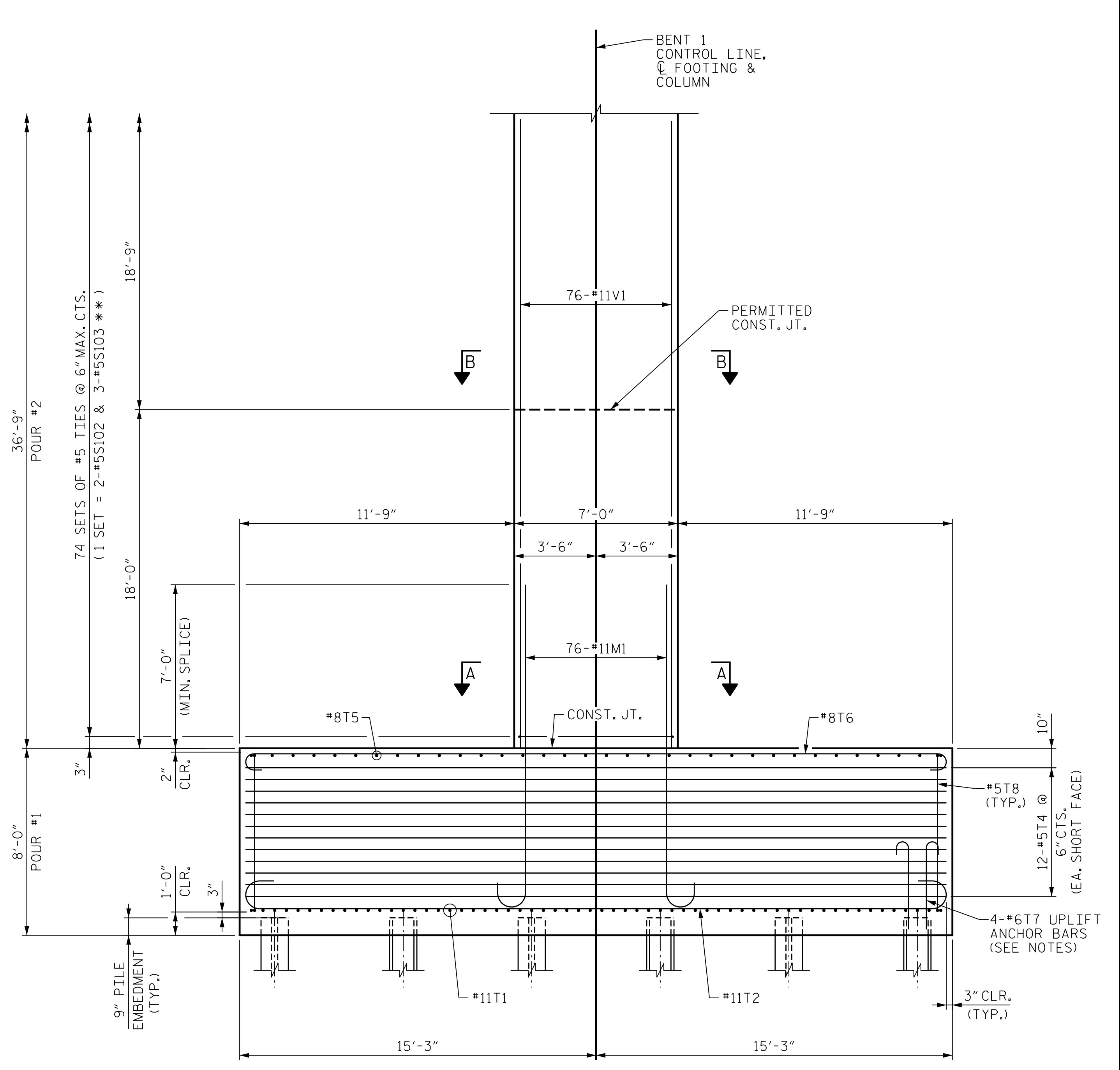
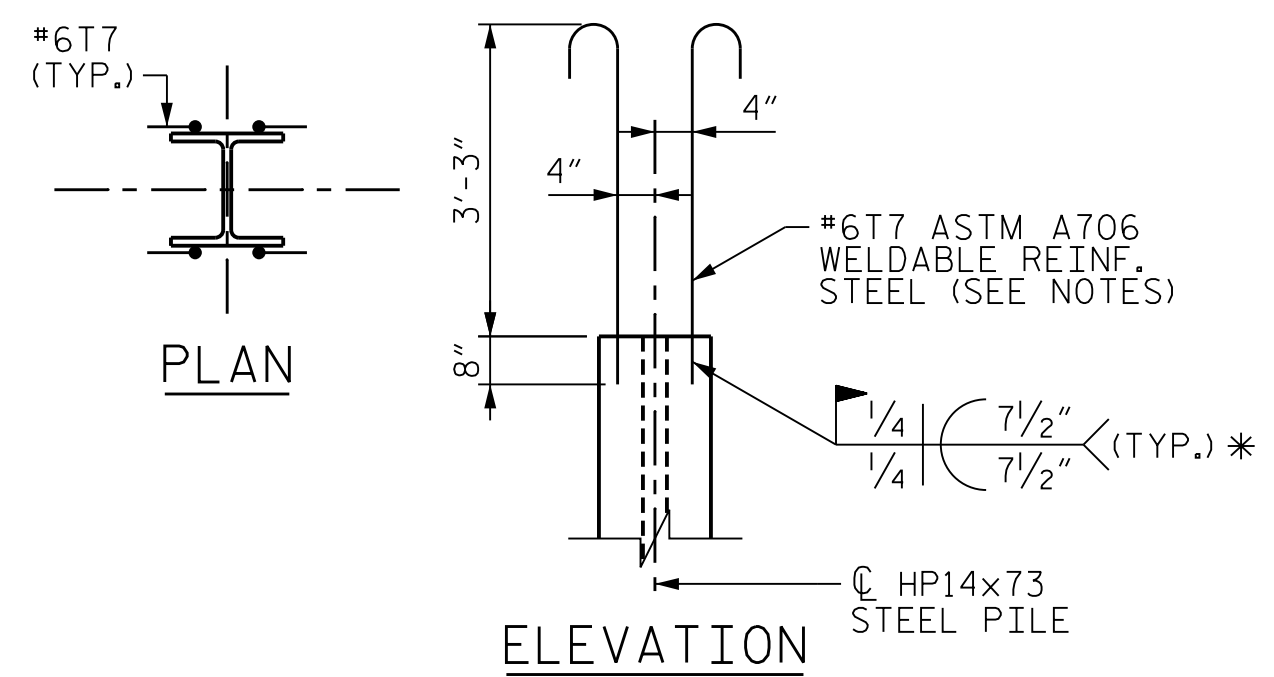


PARTIAL FRONT ELEVATION



PARTIAL END ELEVATION

** INVERT ORIENTATION OF ALTERNATE #5S103 TIES



PILE UPLIFT ANCHOR DETAILS
(TYP. AT PILES NOTED THUS: # ON SUBSTRUCTURE FOOTING & COLUMN DETAILS SHEET)

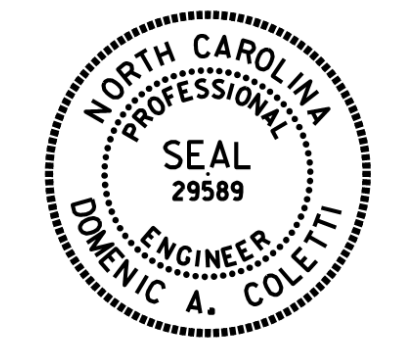
NOTES FOR BENTS 1, 2, 3, 5, 6, AND 7

HOOKS ON M1 AND T7 BARS MAY BE TURNED AS NECESSARY FOR PLACING REINFORCING STEEL.
 "T" BARS IN TOP OF FOOTING MAY BE SHIFTED AS NECESSARY, WITHOUT VIOLATING THE 1'-0" MAXIMUM SPACING, TO CLEAR M1 BARS EXTENDING INTO COLUMN.
 FOR MASS CONCRETE, SEE SPECIAL PROVISIONS.
 FOR PILE SPLICE DETAILS, SEE "SUBSTRUCTURE END BENT 1", SHEET 4 OF 4.
 PLANS AND CALCULATIONS FOR ANY TEMPORARY SUPPORTS ATTACHED TO FOOTINGS, COLUMNS OR BENT CAPS SHALL BE SUBMITTED FOR REVIEW AND APPROVAL BY THE ENGINEER PRIOR TO START OF BENT CONSTRUCTION. ANY ATTACHMENT PROVISIONS SHALL BE REMOVED AFTER USE AND THE FOOTINGS, COLUMNS OR BENT CAPS REPAIRED IN SUCH A WAY AS TO NOT COMPROMISE THE INTEGRITY OF THE BENT.
 DETAILED DRAWINGS FOR FALSEWORK AND FORMS FOR ALL HAMMERHEAD BENTS SHALL BE SUBMITTED FOR REVIEW AND APPROVAL BY THE ENGINEER. SEE SPECIAL PROVISIONS FOR FORMWORK AND FALSEWORK.

NOTES FOR BENT 1

FOR FOOTING PLAN, SECTION A-A AND SECTION B-B, SEE "SUBSTRUCTURE BENT 1 FOOTING & COLUMN DETAILS", SHEET 3 OF 6.
 4-#6T7 UPLIFT ANCHOR BARS AT NOTED PILES - SEE "SUBSTRUCTURE BENT 1 FOOTING & COLUMN DETAILS", SHEET 3 OF 6 FOR LOCATIONS.

PROJECT NO. U-2579AB
 FORSYTH COUNTY
 STATION: 58+33.94 -Y15FLYCA-
 SHEET 1 OF 6

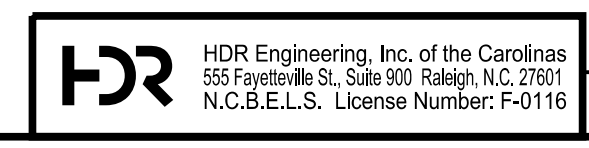


STATE OF NORTH CAROLINA
 DEPARTMENT OF TRANSPORTATION
 RALEIGH

SUBSTRUCTURE BENT 1 ELEVATIONS

REVISIONS						SHEET NO.	
NO.	BY:	DATE:	NO.	BY:	DATE:	TOTAL SHEETS	
1	--	--	3	--	--	506-083	
2	--	--	4	--	--	129	

PLOT DRIVER: NCDOT.pdf_color_eng-50dpi
 USER: PPETERSO DATE: 10/14/2021
 FILE: ...SUBSTR
 PENTABLE: NCDOT STRUCTURES DEFAULT PEN.tbl
 TIME: 5:18:51 PM



DOCUMENT NOT CONSIDERED FINAL
 UNLESS ALL SIGNATURES COMPLETED

DES BY: <u>K. OLIVER</u>	DATE: <u>11/19</u>	DWG BY: <u>B. PETERSON</u>	DATE: <u>12/19</u>
DES CHK: <u>N. LIU</u>	DATE: <u>11/19</u>	CHK BY: <u>N. LIU</u>	DATE: <u>01/20</u>