

SECTION A-A

NOTES:

FOR PIPE INSERT DETAILS, SEE BEARING SHEETS.

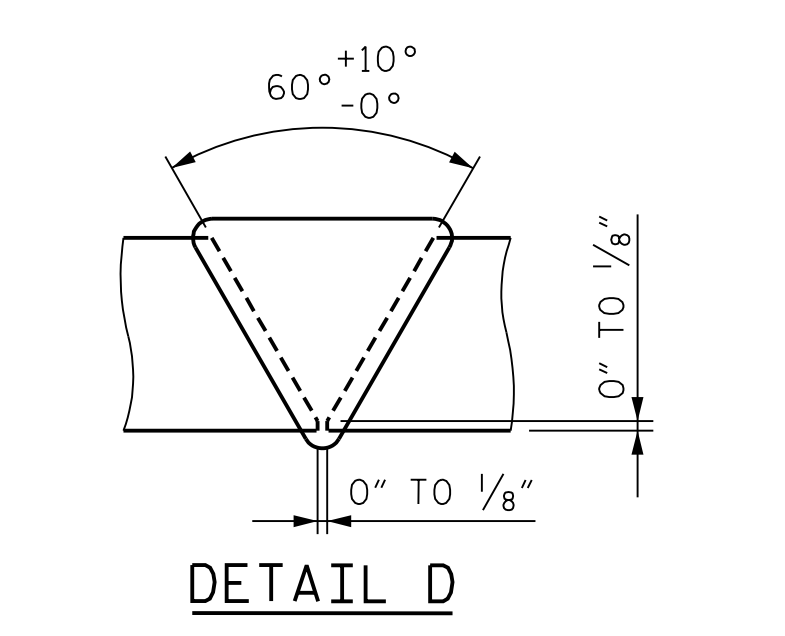
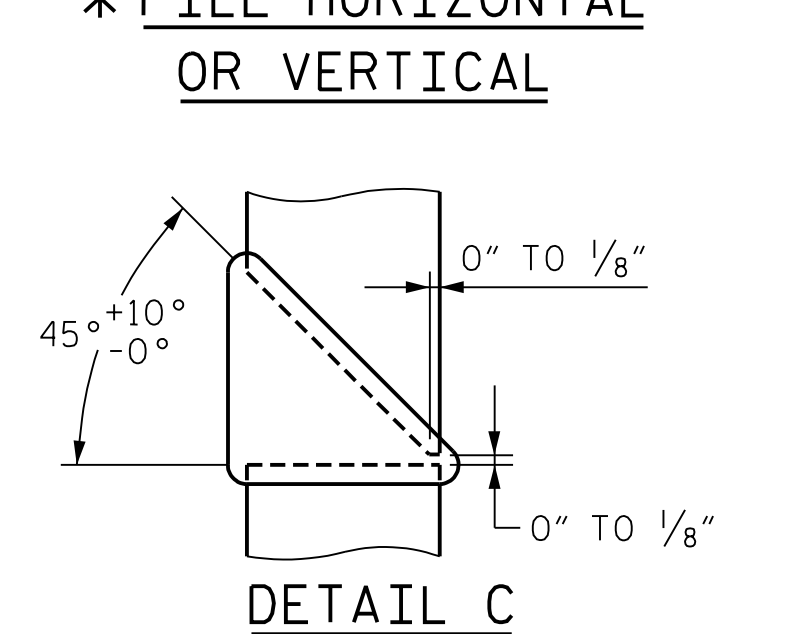
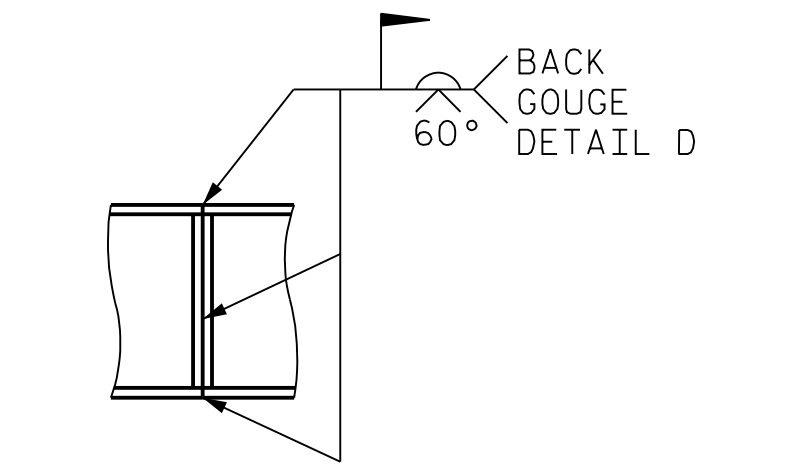
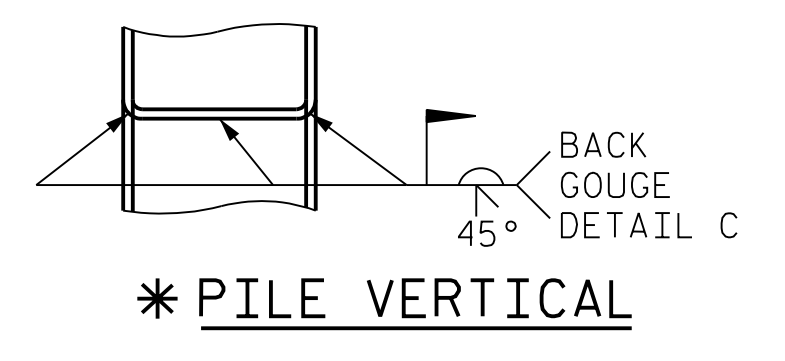
THE TOP SURFACE AREAS OF THE END BENT CAP SHALL BE CURED IN ACCORDANCE WITH THE STANDARD SPECIFICATIONS EXCEPT THAT THE MEMBRANE CURING COMPOUND METHOD SHALL NOT BE USED.

BACKWALL SHALL BE PLACED BEFORE APPLYING THE EPOXY PROTECTIVE COATING.

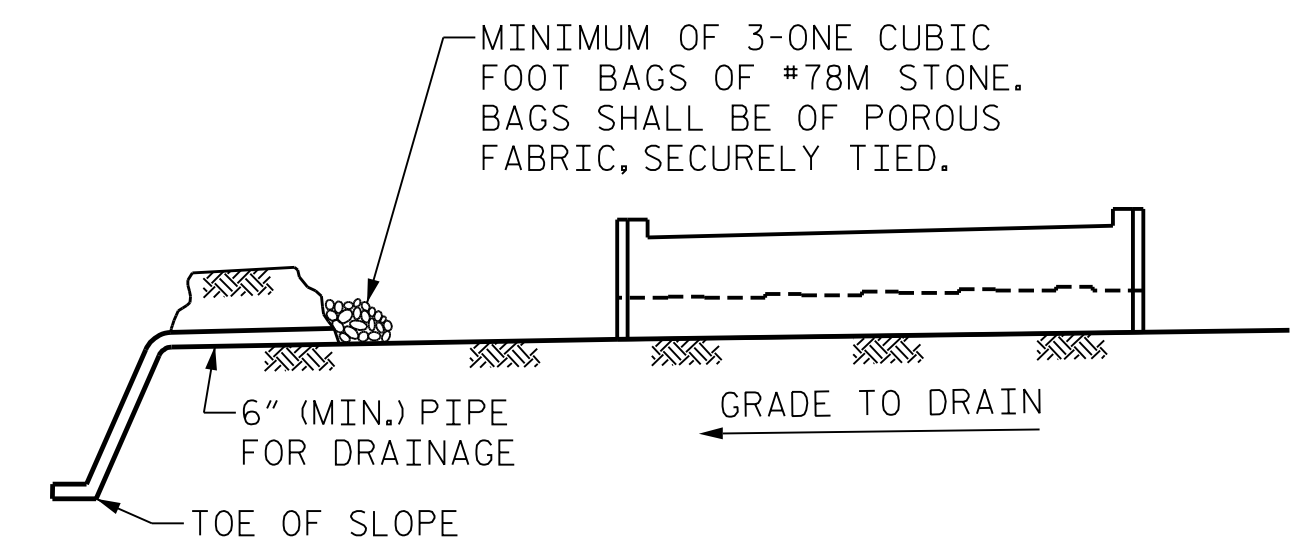
THE TOP SURFACE OF THE END BENT CAP, EXCEPT THE BRIDGE SEAT BUILDUPS, SHALL BE SLOPED TRANSVERSELY FROM THE FILL FACE TO THE BACK FACE AT THE RATE OF 2%.

STIRRUPS IN CAP MAY BE SHIFTED AS NECESSARY TO CLEAR ANCHOR BOLTS.

SEE GENERAL DRAWING "FOUNDATION LAYOUT" FOR ADDITIONAL NOTES FOR DRIVING PILES.



PILE SPLICE DETAILS
* = POSITION OF PILE DURING WELDING



NOTES:

BAGGED STONE AND PIPE SHALL BE PLACED IMMEDIATELY AFTER COMPLETION OF END BENT EXCAVATION. PIPE MAY BE EITHER CONCRETE, CORRUGATED STEEL, CORRUGATED ALUMINUM ALLOY OR CORRUGATED PLASTIC. PERFORATED PIPE WILL NOT BE ALLOWED.

BAGGED STONE SHALL REMAIN IN PLACE UNTIL THE ENGINEER DIRECTS THAT IT BE REMOVED. THE CONTRACTOR SHALL REMOVE AND DISPOSE OF SILT ACCUMULATIONS AT BAGGED STONE WHEN SO DIRECTED BY THE ENGINEER. BAGS SHALL BE REMOVED AND REPLACED WHENEVER THE ENGINEER DETERMINES THAT THEY HAVE DETERIORATED AND LOST THEIR EFFECTIVENESS.

NO SEPARATE PAYMENT WILL BE MADE FOR THIS WORK AND THE ENTIRE COST OF THIS WORK SHALL BE INCLUDED IN THE UNIT CONTRACT PRICE FOR THE SEVERAL PAY ITEMS.

TEMPORARY DRAINAGE AT END BENT

BAR TYPES		BILL OF MATERIAL				
(ALL DIMENSIONS ARE OUT TO OUT)		BAR NO.	SIZE	TYPE	LENGTH	WEIGHT
HK (TYP.)	①	B1	#9	1	51'-4"	2443
1'-3" (TYP.)	48'-10"	B2	#6	STR	49'-0"	736
		B3	#4	STR	25'-9"	482
		B4	#4	STR	6'-2"	54
		H1	#6	5	28'-1"	1013
		H2	#6	5	22'-8"	2179
		K1	#4	STR	25'-9"	757
		K2	#4	STR	2'-7"	14
		K3	#4	STR	22'-9"	61
		M1	#4	STR	2'-8"	58
		M2	#4	4	9'-2"	74
		S1	#5	2	7'-1"	436
		S2	#5	3	12'-1"	593
		S3	#4	4	3'-8"	108
		S4	#4	4	8'-4"	401
		S5	#6	8	9'-1"	82
		S6	#6	7	5'-5"	49
		S7	#5	3	11'-6"	636
		S8	#4	2	1'-10"	108
		S9	#5	3	10'-6"	66
		S10	#4	6	7'-7"	183
		U1	#7	4	8'-10"	253
		U2	#5	4	6'-6"	82
		U3	#7	4	7'-0"	29
		U4	#7	4	3'-10"	8
		V1	#5	STR	13'-5"	1232
		V2	#5	STR	15'-4"	160
		V3	#5	STR	15'-3"	128
		V4	#5	STR	15'-2"	127
		V5	#5	STR	15'-0"	126
		V6	#5	STR	14'-11"	125
		V7	#5	STR	14'-10"	124
		V8	#5	STR	14'-3"	119
		V9	#5	STR	14'-4"	120
		V10	#5	STR	14'-6"	121
		V11	#5	STR	14'-7"	122
		V12	#5	STR	14'-8"	123
		V13	#5	STR	14'-9"	31
		V14	#5	STR	14'-10"	124
		REINFORCING STEEL		LBS.		13,687
		CLASS 'A' CONCRETE				
		POUR 1: COLLARS, CAP & LOWER PART OF WINGS		CU. YDS.		61.5
		POUR 2: BACKWALL & UPPER PART OF WINGS		CU. YDS.		40.5
		TOTAL		CU. YDS.		102.0
		HP 14x73 STEEL PILES		NO.		20
				LF		1800
		PILE DRIVING EQUIPMENT SETUP FOR HP 14x73 STEEL PILES		EA.		20



Domini A. Coletti 10/15/2021

PROJECT NO. U-2579AB
 FORSYTH COUNTY
 STATION: 58+33.94 -Y15FLYCA-
 SHEET 4 OF 4

STATE OF NORTH CAROLINA
 DEPARTMENT OF TRANSPORTATION
 RALEIGH
**SUBSTRUCTURE
 END BENT 1
 SECTION & DETAILS**

REVISIONS						SHEET NO.
NO.	BY:	DATE:	NO.	BY:	DATE:	S06-082
1	--	--	3	--	--	TOTAL SHEETS 129
2	--	--	4	--	--	

PLOT DRIVER: NCDOT.pdf_color_eng-50.ppt
 USER: PPETERSO DATE: 10/14/2021
 FILE: ...SUBSTR

DES BY: M. BARNES	DATE: 07/19	DWG BY: B. PETERSON	DATE: 07/19
DES CHK: J. EARNEST	DATE: 07/19	CHK BY: J. EARNEST	DATE: 08/19



DOCUMENT NOT CONSIDERED FINAL
 UNLESS ALL SIGNATURES COMPLETED