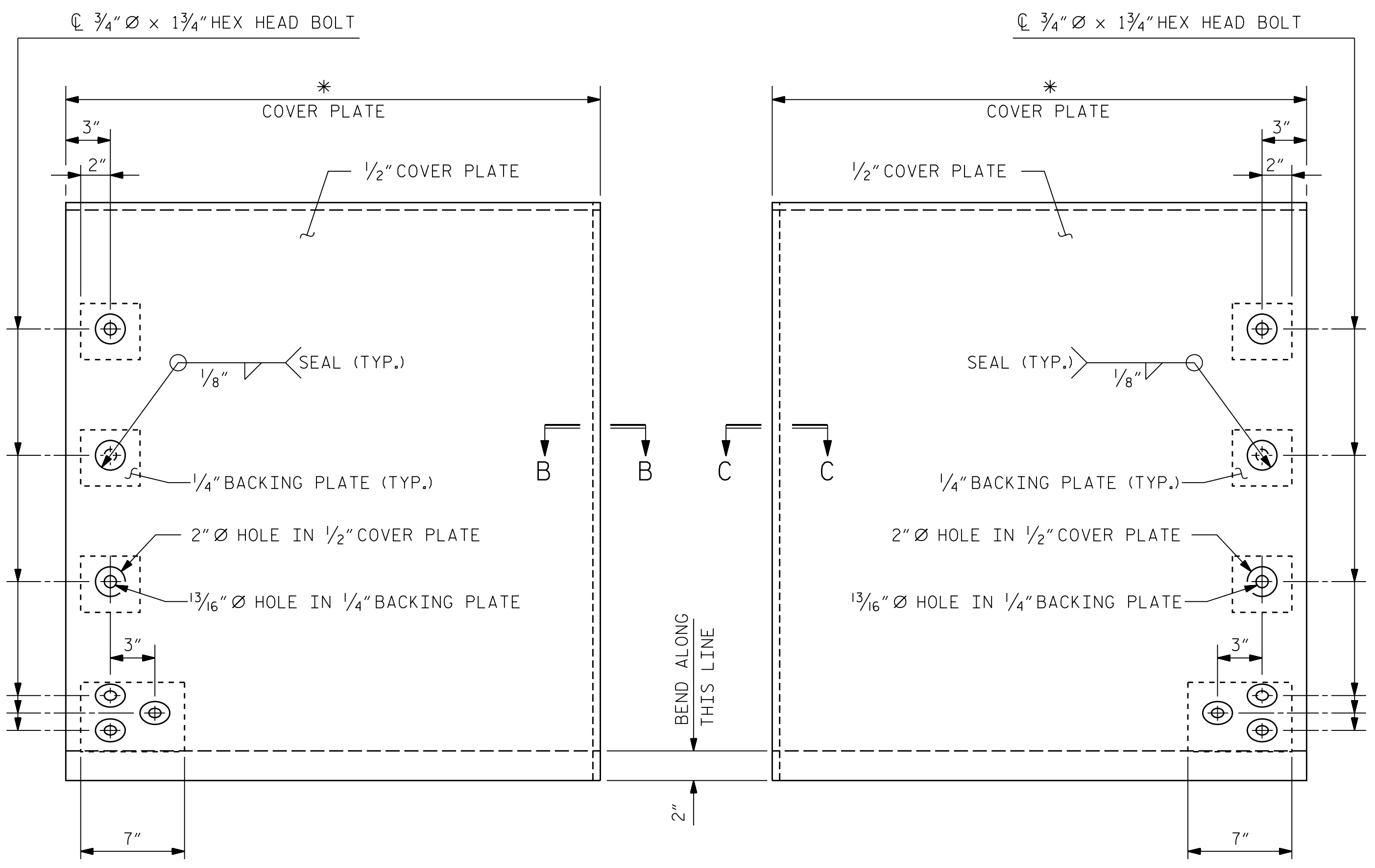


END VIEW



TYPE I - ELEVATION VIEW

TYPE II - ELEVATION VIEW

NOTES

FOR MODULAR EXPANSION JOINT SEALS, SEE SPECIAL PROVISIONS.

THE STEEL PLATES SHALL CONFORM TO AASHTO M270 GRADE 36 OR APPROVED EQUAL AND BE PAINTED IN ACCORDANCE WITH THE STANDARD SPECIFICATIONS. AT THE CONTRACTOR'S OPTION, THE PLATES MAY BE METALLIZED AFTER FABRICATION. SEE SPECIAL PROVISIONS FOR THERMAL SPRAYED COATINGS (METALLIZATION).

THE 3/4" Ø HEX HEAD BOLTS SHALL CONFORM TO ASTM F593 ALLOY 304 STAINLESS STEEL.

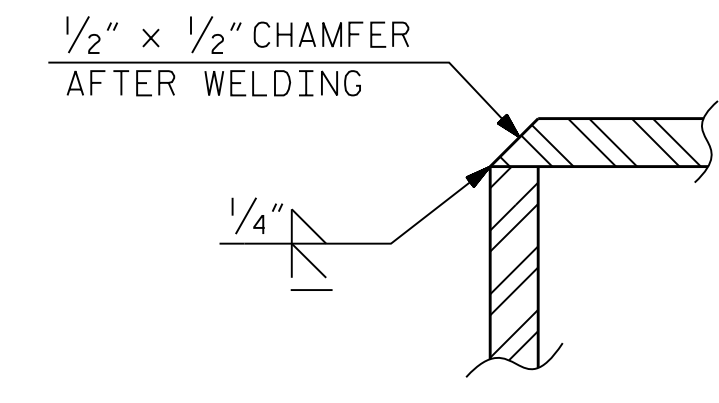
THE 3/4" CONCRETE INSERTS SHALL BE CLOSED-END FERRULES WITH LOOPED WIRE STRUTS ATTACHED TO THEM. THE INSERTS SHALL CONFORM TO AASHTO M169, GRADE 12L14 AND SHALL HAVE A TENSILE WORKING LOAD CAPACITY OF 3000 LBS.

APPLY A BOND BREAKER COATING TO THE INSIDE SURFACES OF THE STEEL COVER AND BACKING PLATES.

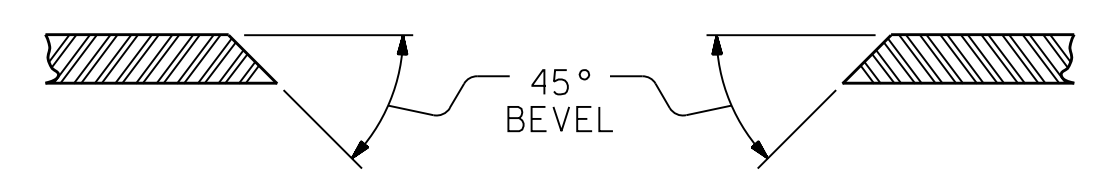
NO SEPARATE PAYMENT WILL BE MADE FOR FURNISHING AND INSTALLING THE COVER PLATE. THE ENTIRE COST OF THIS WORK SHALL BE INCLUDED IN THE LUMP SUM PRICE FOR "MODULAR EXPANSION JOINT SEALS".

FOR PAVEMENT MARKING ALIGNMENT SKETCH, SEE EXPANSION JOINT SEAL DETAILS SHEET.

LOCATION	SKIEW ANGLE	TOTAL MOVEMENT ALONG C ROADWAY
END BENT 1	90°00'00"	4 1/8"
BENT 5	90°00'00"	9 3/8"

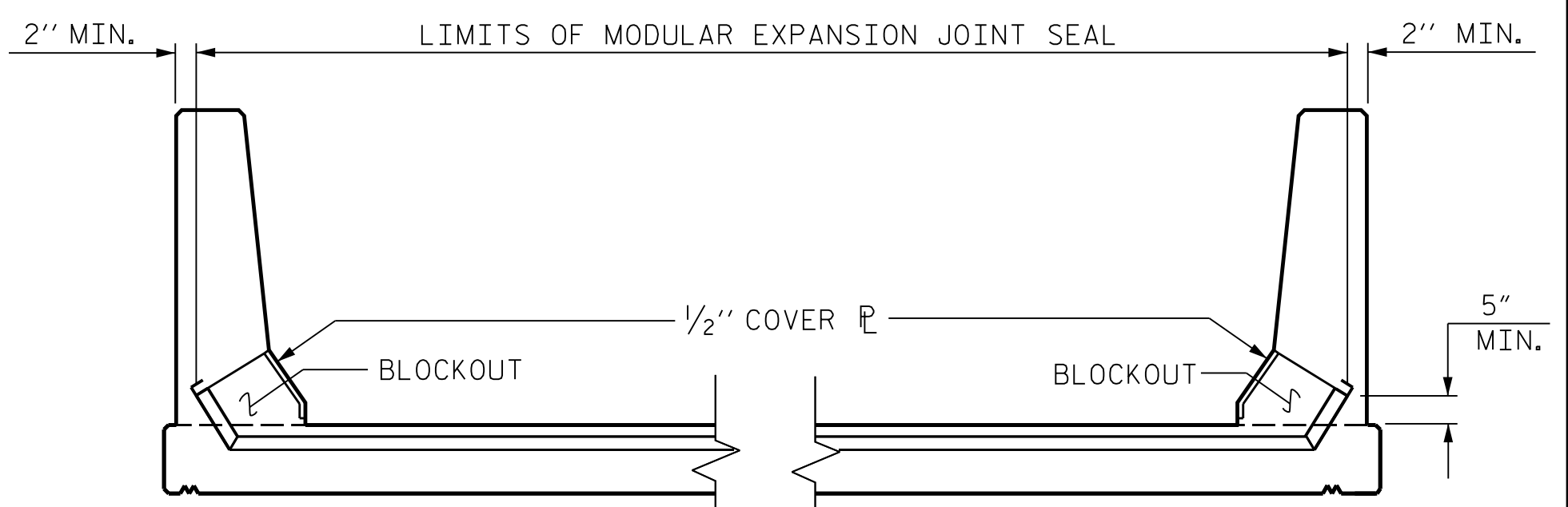


WELD DETAIL



SECTION B-B

SECTION C-C



SKETCH SHOWING LIMITS OF MODULAR EXPANSION JOINT SEAL-BARRIER RAIL

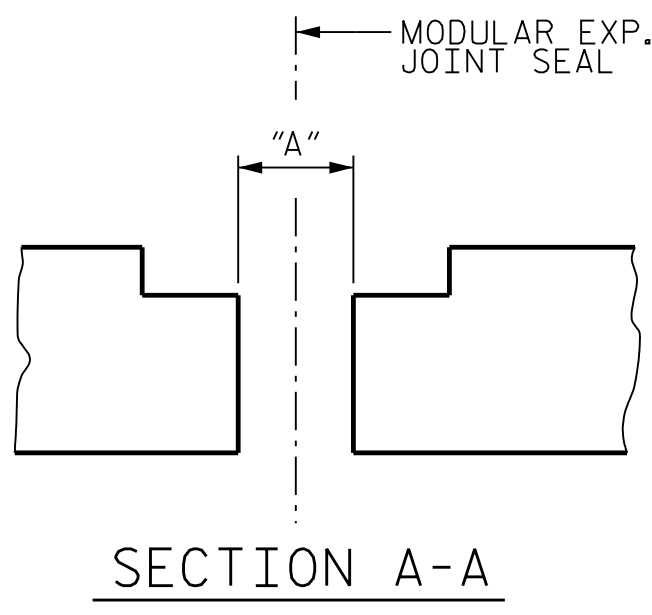
▲ = OUTSIDE DIMENSIONS OF COVER PLATE TO MATCH OUTSIDE DIMENSIONS OF CONCRETE BARRIER RAIL
 # = 1/4" x 6" x 7" BACKING PLATE

COVER PLATE DETAILS

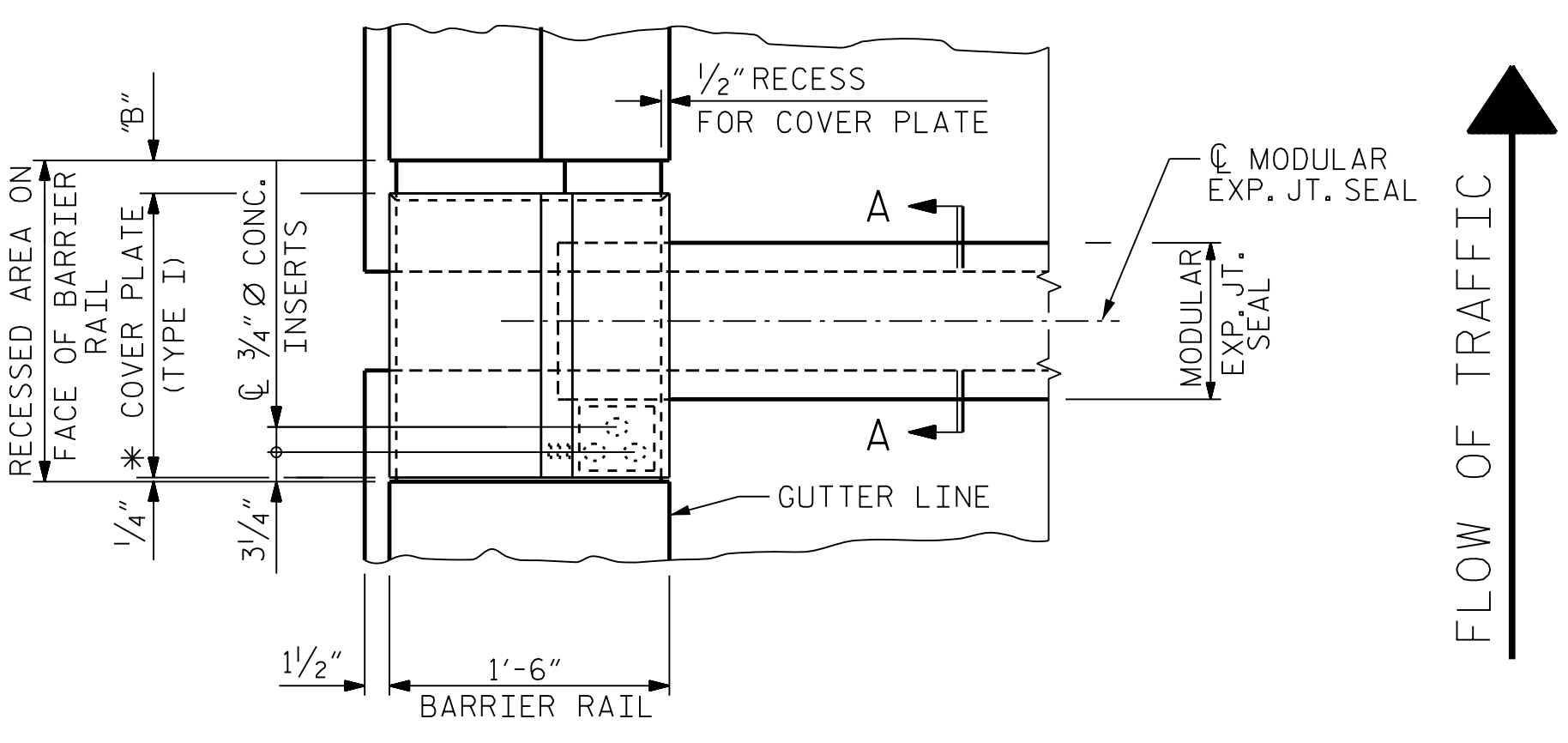
* = DETAILS OF COVER PLATES ARE SUBJECT TO CHANGE DEPENDING ON THE DETAILS OF THE MODULAR EXPANSION JOINT SEALS FURNISHED.

LOCATION	"A" (in.)		
	45° F	60° F	90° F
END BENT 1	3 1/16"	3 1/16"	1 3/16"
BENT 5	7 1/16"	5 1/16"	2 7/8"

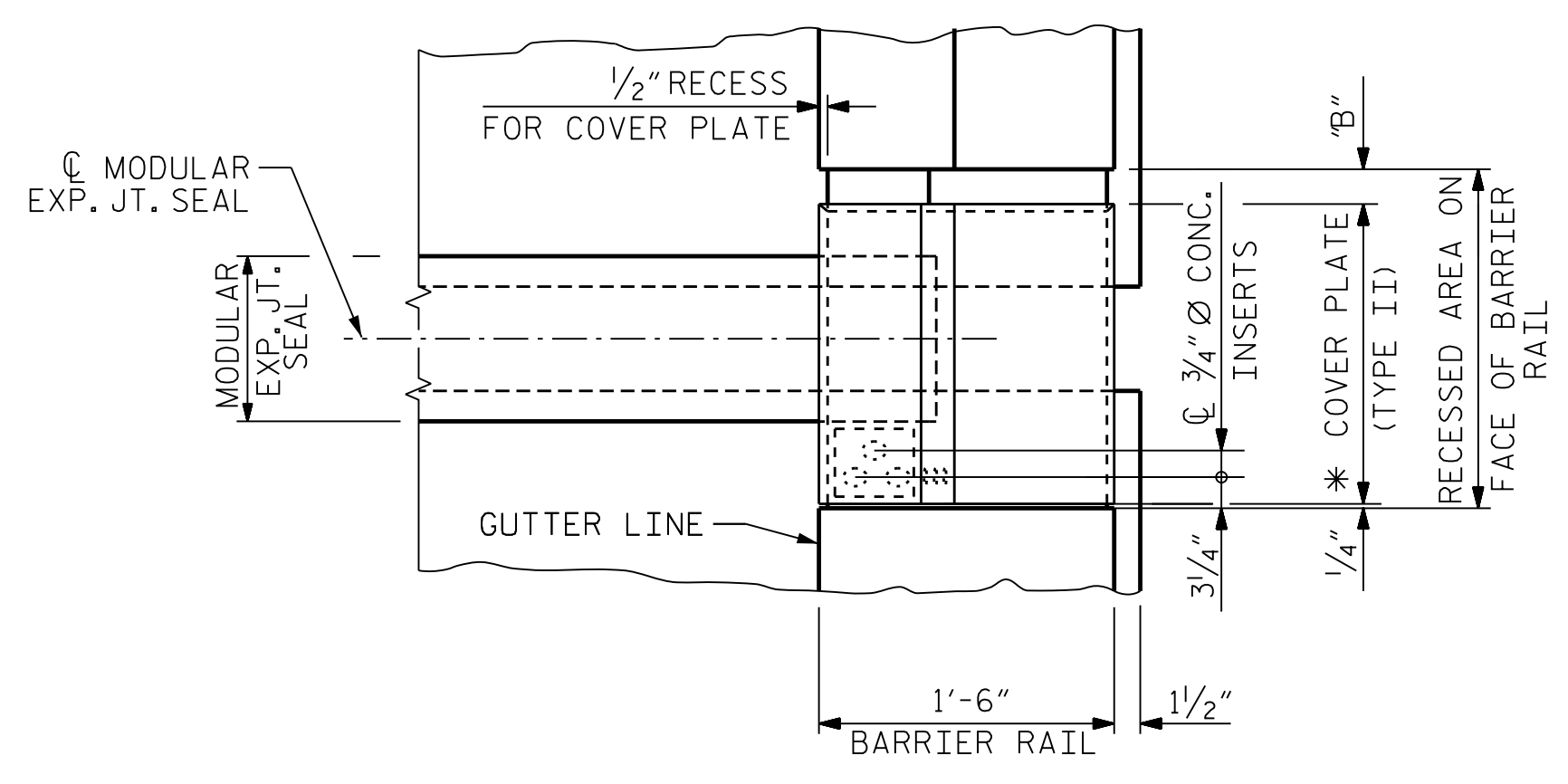
LOCATION	"B" (in.)		
	45° F	60° F	90° F
END BENT 1	3 1/16"	3 1/16"	1 3/16"
BENT 5	7 1/16"	5 1/16"	2 7/8"



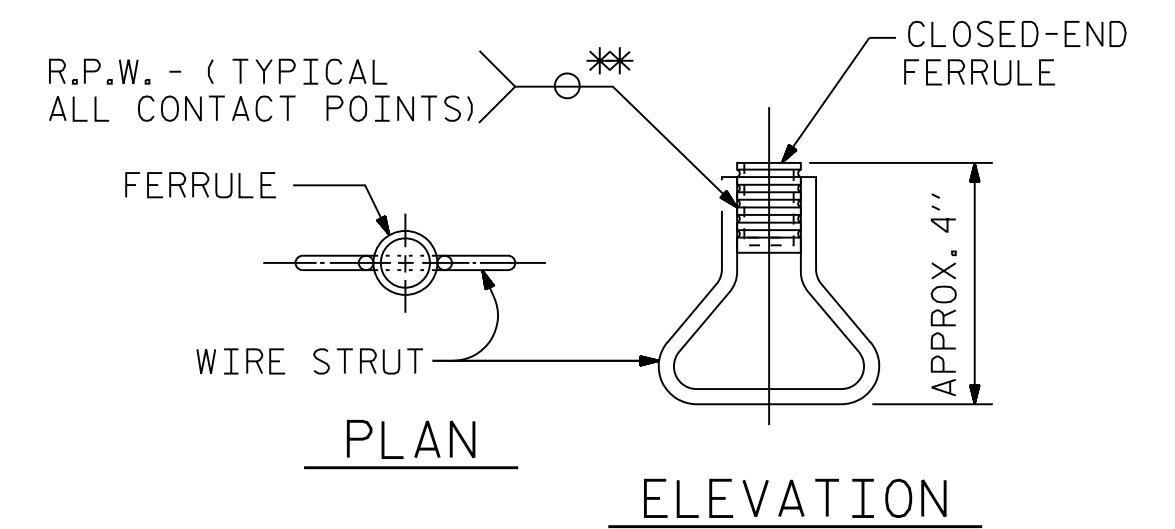
SECTION A-A



PLAN OF MODULAR EXPANSION JOINT SEAL - LEFT SIDE

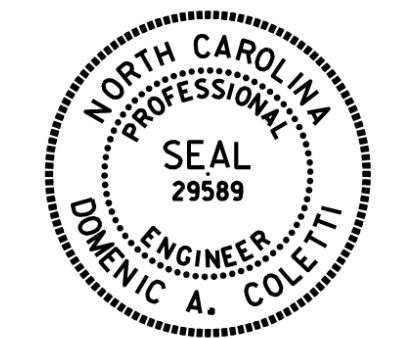


PLAN OF MODULAR EXPANSION JOINT SEAL - RIGHT SIDE



CONCRETE INSERT

* EACH WELDED ATTACHMENT OF WIRE TO FERRULE SHALL DEVELOP THE TENSILE STRENGTH OF THE WIRE.



PROJECT NO. U-2579AB
 FORSYTH COUNTY
 STATION: 58+33.94 -Y15FLYCA-

STATE OF NORTH CAROLINA
 DEPARTMENT OF TRANSPORTATION
 RALEIGH
 MODULAR EXPANSION JOINT SEAL DETAILS FOR BARRIER RAIL

REVISIONS						SHEET NO. 506-077
NO.	BY:	DATE:	NO.	BY:	DATE:	
1	--	--	3	--	--	TOTAL SHEETS 129
2	--	--	4	--	--	

PLOT DRIVER: NCDOT.pdf_color_eng-50.ppt
 USER: PPRETOSO
 FILE: ... \SUPERS
 PENTABLE: NCDOT STRUCTURES DEFAULT .PEN.tbl
 TIME: 5:18:03 PM
 DATE: 10/14/2021

DES BY: G. SCHMITZ DATE: 10/19
 DES CHK: D. OLDS DATE: 10/19
 DWG BY: T. SAS DATE: 10/19
 CHK BY: D. OLDS DATE: 12/19



DOCUMENT NOT CONSIDERED FINAL
 UNLESS ALL SIGNATURES COMPLETED
 10/15/2021