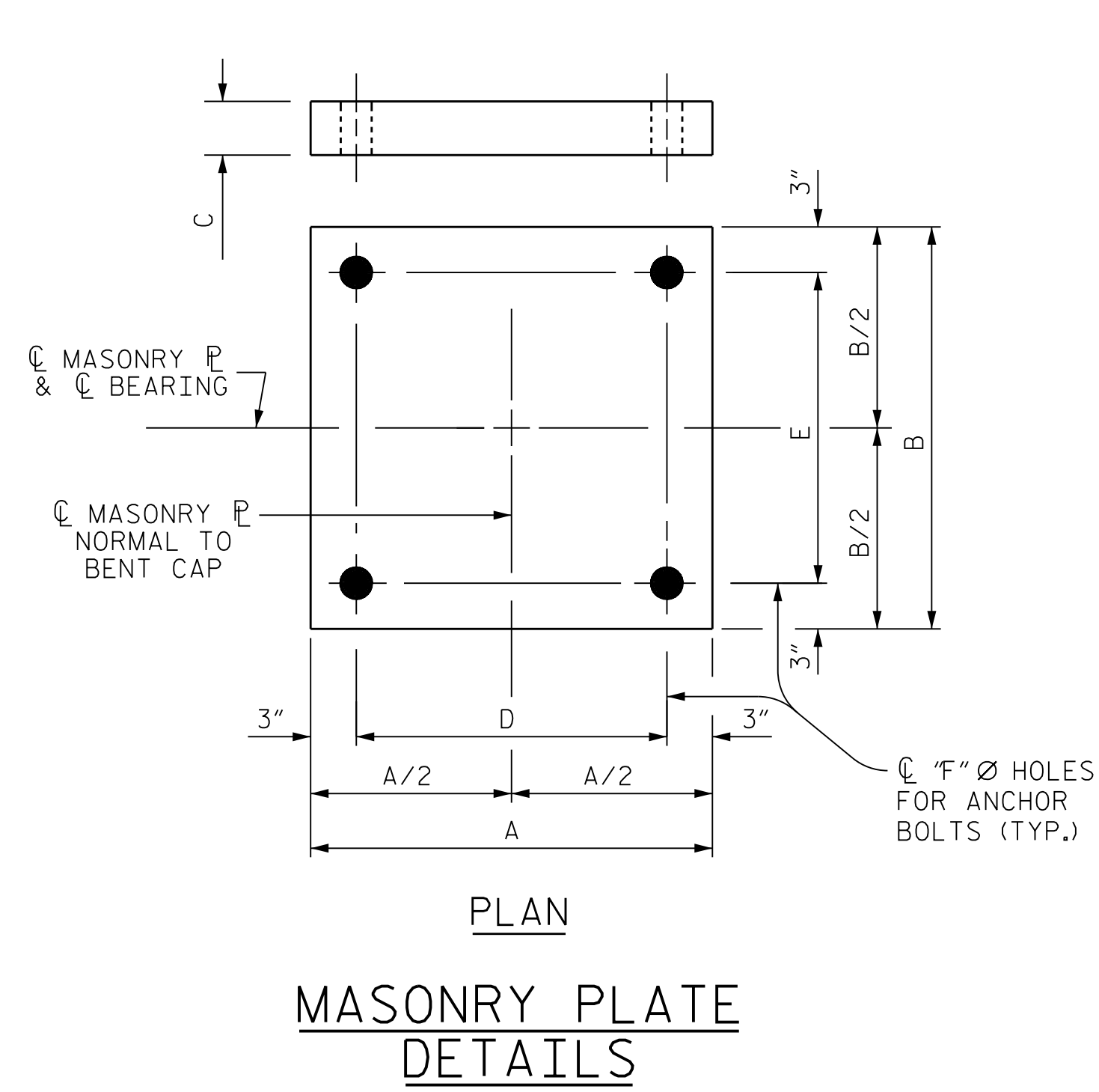


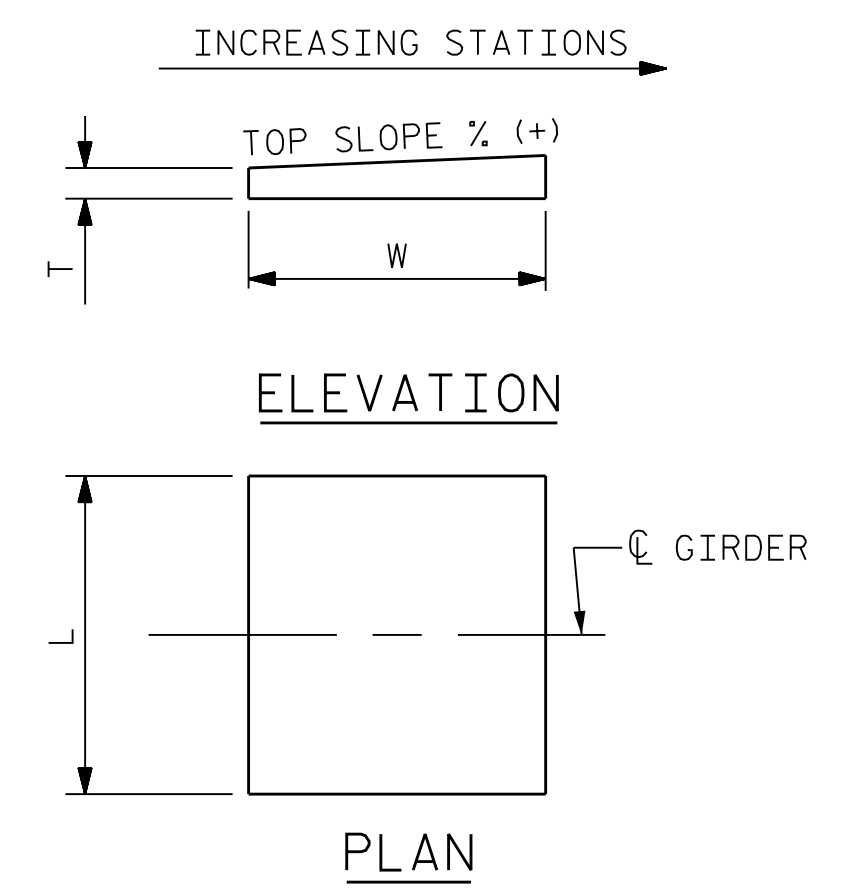
DESIGNATIONS		LOCATION	NUMBER OF BEARINGS	DIMENSIONS											LOADS AND MOVEMENT					
BEARINGS	MASONRY			BEARING	MASONRY PLATE						SOLE PLATE TOP SLOPE (%)	ANCHOR BOLT DIAMETER (IN.)	ANCHOR BOLT PROJECTION	TOTAL ANCHOR BOLT LENGTH	4" Ø STD. PIPE LENGTH	UNFACTORED VERTICAL LOAD (KIPS)			FACTORED HORIZONTAL LOAD (KIPS)	** ONE-WAY MOVEMENT
					H	A	B	C	D	E						F	DEAD	LIVE		
DB1 (EXP.)	M1	END BENT 1	4	6 1/4"	2'-3"	2'-3"	3/4"	1'-9"	1'-9"	1 15/16"	2.7500	1 1/2"	2 1/8"	1'-6"	1'-3 1/4"	192	24	140	72	2 3/8"
DB2 (FIX.)	M2	BENT 1	4	7 5/8"	2'-6"	2'-6"	1"	2'-0"	2'-0"	2 7/16"	2.7500	2"	2 1/2"	1'-10"	N/A	549	66	279	189	0"
DB3 (FIX.)	M3	BENT 2	4	7 3/8"	2'-4 1/2"	2'-4 1/2"	1"	1'-10 1/2"	1'-10 1/2"	2 7/16"	2.1600	2"	2 1/2"	1'-10"	N/A	461	55	280	164	0"
DB4 (EXP.)	M4	BENT 3	4	9 5/8"	3'-4"	3'-4"	1 1/4"	2'-10"	2'-10"	2 7/16"	0.7700	2"	2 1/2"	1'-10"	1'-6 1/4"	672	75	311	226	2 3/16"
DB5 (EXP.)	M5	BENT 4	4	10 1/8"	3'-8"	3'-8"	1 1/4"	3'-2"	3'-2"	2 11/16"	-1.0800	2 1/4"	2 3/4"	2'-1 1/2"	1'-9 1/4"	871	96	331	284	4 3/8"
DB6 (EXP.)	M6	BENT 5 BK	4	7"	2'-4 1/2"	2'-4 1/2"	3/4"	1'-10 1/2"	1'-10 1/2"	1 5/16"	-2.7500	1 1/2"	2 1/8"	1'-6"	1'-3 1/4"	276	33	166	98	6 5/16"
DB7 (EXP.)	M6	BENT 5 AHD	4	6 5/8"	2'-4 1/2"	2'-4 1/2"	3/4"	1'-10 1/2"	1'-10 1/2"	1 5/16"	-2.7600	1 1/2"	2 1/8"	1'-6"	1'-3 1/4"	169	21	138	65	3 3/16"
DB8 (EXP.)	M7	BENT 6	4	9 1/2"	3'-2"	3'-2"	1 1/4"	2'-8"	2'-8"	2 7/16"	-3.9300	2"	2 1/2"	1'-10"	1'-6 1/4"	585	70	283	200	1 13/16"
DB9 (FIX.)	M8	BENT 7	4	8 1/4"	2'-8"	2'-8"	1 1/4"	2'-2"	2'-2"	2 7/16"	-5.0000	2"	2 1/2"	1'-10"	N/A	610	73	287	207	0"
DB10 (EXP.)	M1	END BENT 2	4	6 1/2"	2'-3"	2'-3"	3/4"	1'-9"	1'-9"	1 5/16"	-5.0000	1 1/2"	2 1/8"	1'-6"	1'-3 1/4"	177	22	137	67	1 7/16"

** "ONE-WAY MOVEMENT" REPRESENTS THE FULL MOVEMENT RANGE EXPECTED TO OCCUR OVER A TEMPERATURE RANGE FROM 10° F TO 110° F. THE BEARING SOLE PLATE AND UPPER SLIDING SURFACE SHOULD BE CENTERED ON THE BEARING AT 60° F. SEE TABLE FOR "PLATE SETTING DATA" ON SHEET 1 OF 3 FOR SETTING DATA FOR OTHER TEMPERATURES.

▲ ANCHOR BOLT PROJECTION IS MEASURED ABOVE TOP OF BEARING SEAT CONCRETE.



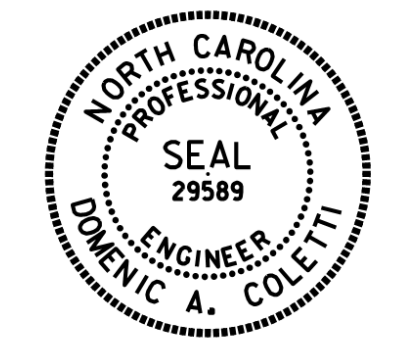
MASONRY PLATE DETAILS



NOTE: DIMENSIONS "L", "W", AND "T" SHALL BE DETERMINED BY THE BEARING MANUFACTURER. SET DIMENSION "L" SUCH THAT THE MINIMUM EDGE DISTANCE TO THE GIRDER FLANGE IS 1".

SOLE PLATE DETAILS

PROJECT NO. U-2579AB
 FORSYTH COUNTY
 STATION: 58+33.94 -Y15FLYCA-
 SHEET 2 OF 3

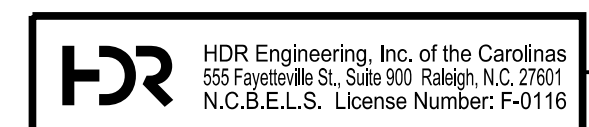


10/15/2021

STATE OF NORTH CAROLINA
 DEPARTMENT OF TRANSPORTATION
 RALEIGH

**SUPERSTRUCTURE
 DISC BEARING
 DETAILS**

REVISIONS						SHEET NO. S06-055
NO.	BY:	DATE:	NO.	BY:	DATE:	
1	--	--	3	--	--	TOTAL SHEETS 129
2	--	--	4	--	--	



DOCUMENT NOT CONSIDERED FINAL UNLESS ALL SIGNATURES COMPLETED

PLOT DRIVER: NCDOT.pdf_color_eng-50.ppt
 USER: PPETERSO DATE: 10/14/2021
 FILE: ... \SUPERS

DES BY: <u>M. NEIHEISEL</u>	DATE: <u>10/19</u>	DWG BY: <u>B. PETERSON</u>	DATE: <u>10/19</u>
DES CHK: <u>D. OLDS</u>	DATE: <u>10/19</u>	CHK BY: <u>G. SCHMITZ</u>	DATE: <u>12/19</u>