

**NOTES**

PROVIDE 1/4" HIGH BEAM BOLSTER UPPER (BBU) AT 4'-0" MAX. CENTERS ATOP THE METAL STAY-IN-PLACE FORMS TO SUPPORT THE BOTTOM MAT OF "A" BARS. WHEN USING REMOVABLE FORMS, PROVIDE CONTINUOUS HIGH CHAIRS FOR METAL DECK (C.H.C.M.) @ 4'-0" MAX. CENTERS WITH HEIGHT TO SUPPORT THE BOTTOM MAT OF "A" BARS A CLEAR DISTANCE OF 2 1/2" ABOVE THE TOP OF THE REMOVABLE FORM.

FOR EXPANSION JOINT SEALS, SEE SPECIAL PROVISIONS.

METAL STAY-IN-PLACE FORMS SHALL NOT BE WELDED TO GIRDER FLANGES IN THE ZONES REQUIRING CHAPPY V-NOTCH TEST. SEE STRUCTURAL STEEL DETAILS SHEETS.

PREVIOUSLY CAST CONCRETE IN A CONTINUOUS UNIT SHALL HAVE ATTAINED A MINIMUM COMPRESSIVE STRENGTH OF 3,000 PSI BEFORE ADDITIONAL CONCRETE IS CAST IN THE UNIT.

STRUCTURAL STEEL ERECTION IN A CONTINUOUS UNIT SHALL BE COMPLETE BEFORE FALSEWORK OR FORMS ARE PLACED ON THE UNIT.

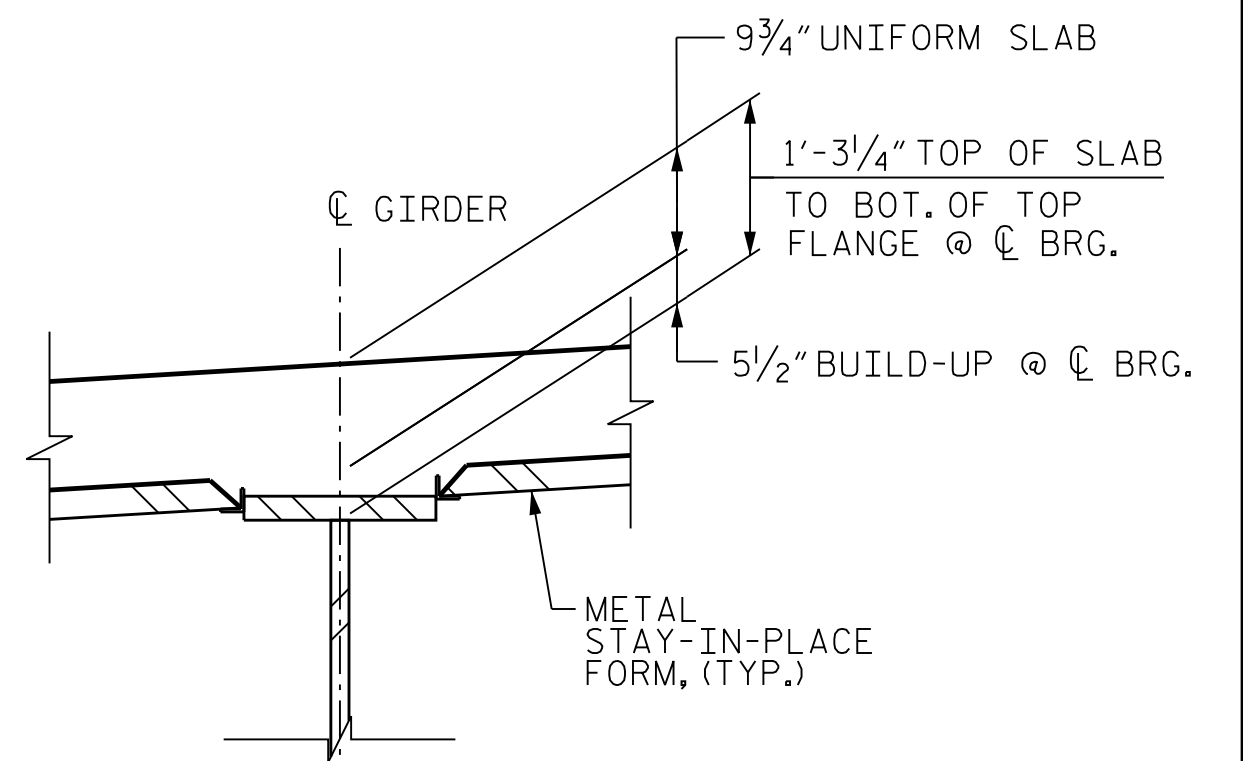
THE CONTRACTOR MAY, WHEN NECESSARY, PROPOSE A SCHEME FOR AVOIDING INTERFERENCE BETWEEN METAL STAY-IN-PLACE FORM SUPPORTS OR FORMS AND BEAM/GIRDERS STIFFENERS OR CONNECTOR PLATES. THE PROPOSAL SHALL BE INDICATED, AS APPROPRIATE, ON EITHER THE STEEL WORKING DRAWINGS OR THE METAL STAY-IN-PLACE FORM WORKING DRAWINGS.

BARRIER RAIL IN A CONTINUOUS UNIT SHALL NOT BE CAST UNTIL ALL SLAB CONCRETE IN THAT UNIT HAS BEEN CAST AND HAS REACHED A MINIMUM COMPRESSIVE STRENGTH OF 3,000 PSI.

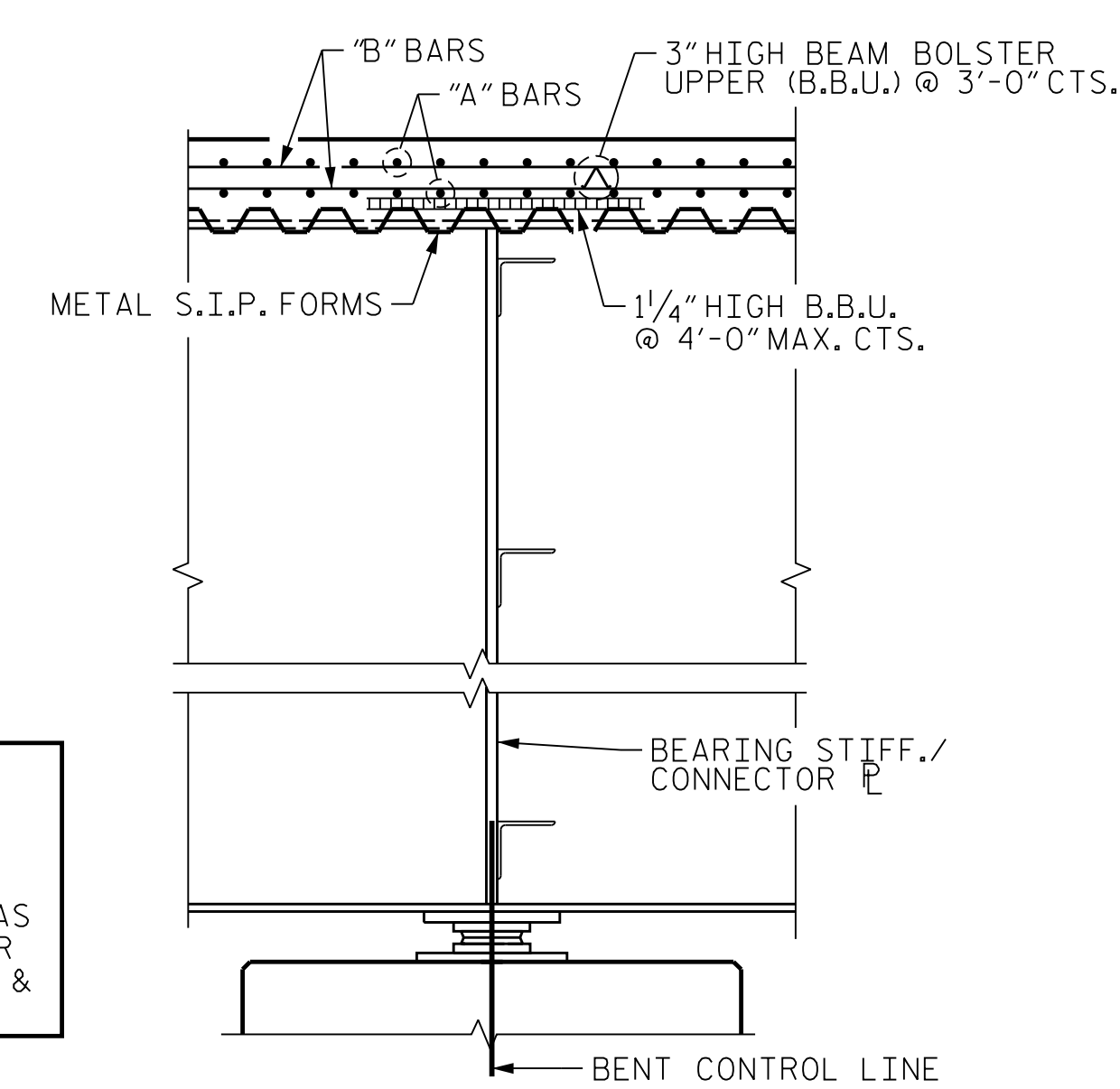
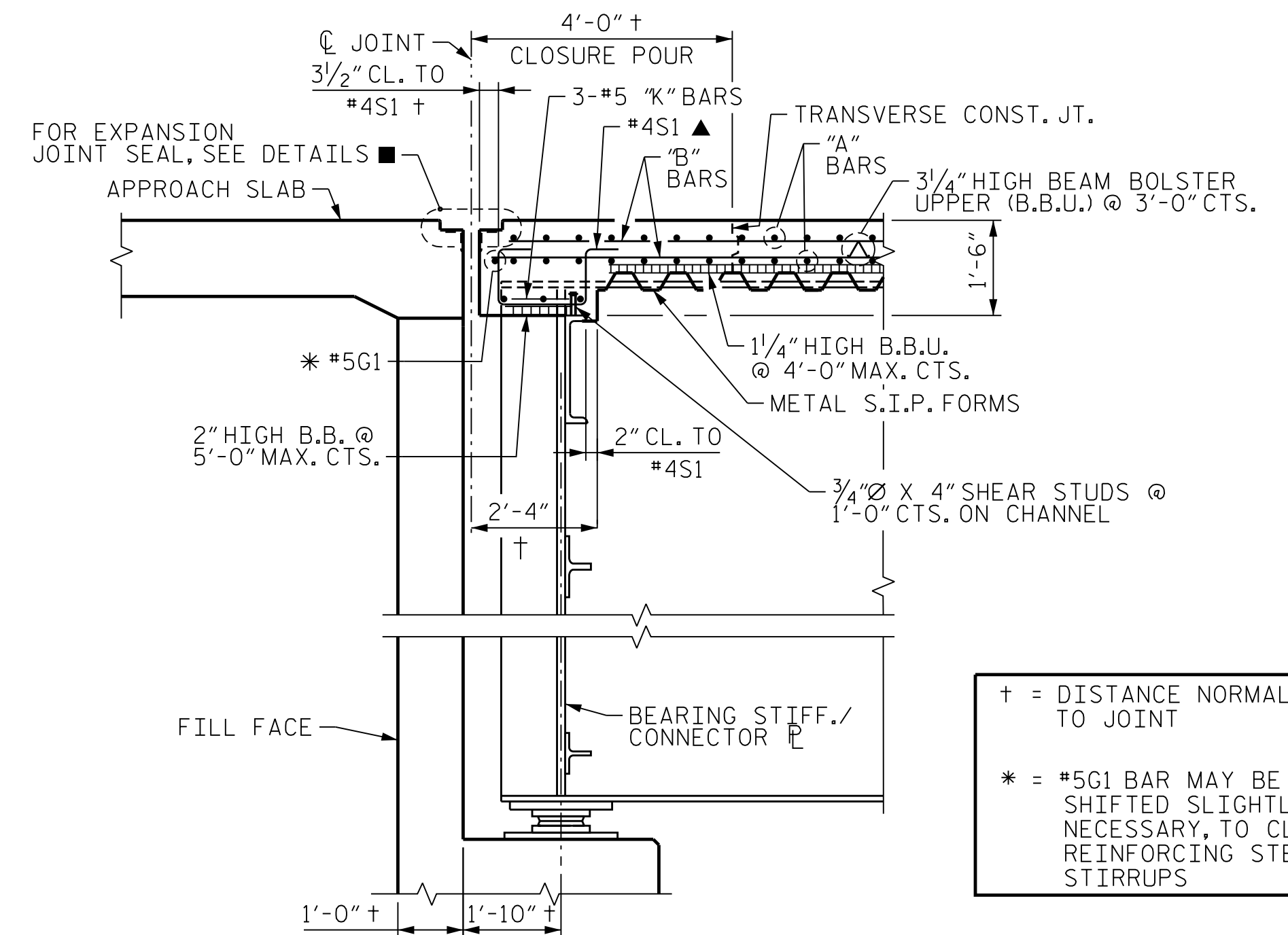
PLOT DRIVER: NCDOT... PENTABLE: NCDOT... USER: PETERSON... DATE: 10/14/2021... FILE: ...SUPERS

SECTION AT INTERMEDIATE & BENT DIAPHRAGM (TYP. @ BENTS 1, 2, 3, 4, 6 & 7)      SECTION AT END BENT DIAPHRAGM (@ END BENT 2)

**TYPICAL SECTION**



**DETAIL "A"**



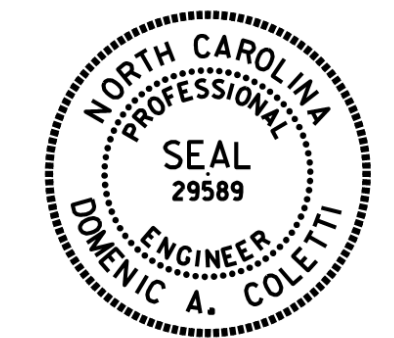
SECTION D-D (@ END BENT 2)

SECTION B-B (TYP. @ BENTS 1, 2, 3, 4, 6 & 7)

■ = SEE "EXPANSION JOINT SEAL DETAILS" SHEET  
 ▲ = SEE "APPROACH SLAB PLAN AND SECTION" SHEET

† = DISTANCE NORMAL TO JOINT  
 \* = #5G1 BAR MAY BE SHIFTED SLIGHTLY, AS NECESSARY, TO CLEAR REINFORCING STEEL & STIRRUPS

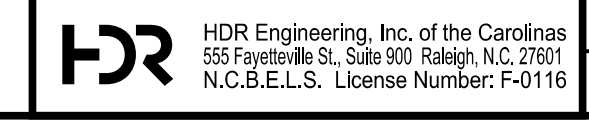
PROJECT NO. U-2579AB  
 FORSYTH COUNTY  
 STATION: 58+33.94 -Y15FLYCA-  
 SHEET 1 OF 2



STATE OF NORTH CAROLINA  
DEPARTMENT OF TRANSPORTATION  
RALEIGH

**SUPERSTRUCTURE TYPICAL SECTION**

DES BY: G. SCHMITZ	DATE: 08/19	DWG BY: B. PETERSON	DATE: 06/19
DES CHK: D. OLDS	DATE: 08/19	CHK BY: M. NEIHEISEL	DATE: 01/20



REVISIONS

NO.	BY:	DATE:	NO.	BY:	DATE:
1	--	--	3	--	--
2	--	--	4	--	--

10/15/2021

SHEET NO. 506-016
TOTAL SHEETS 129

DOCUMENT NOT CONSIDERED FINAL UNLESS ALL SIGNATURES COMPLETED