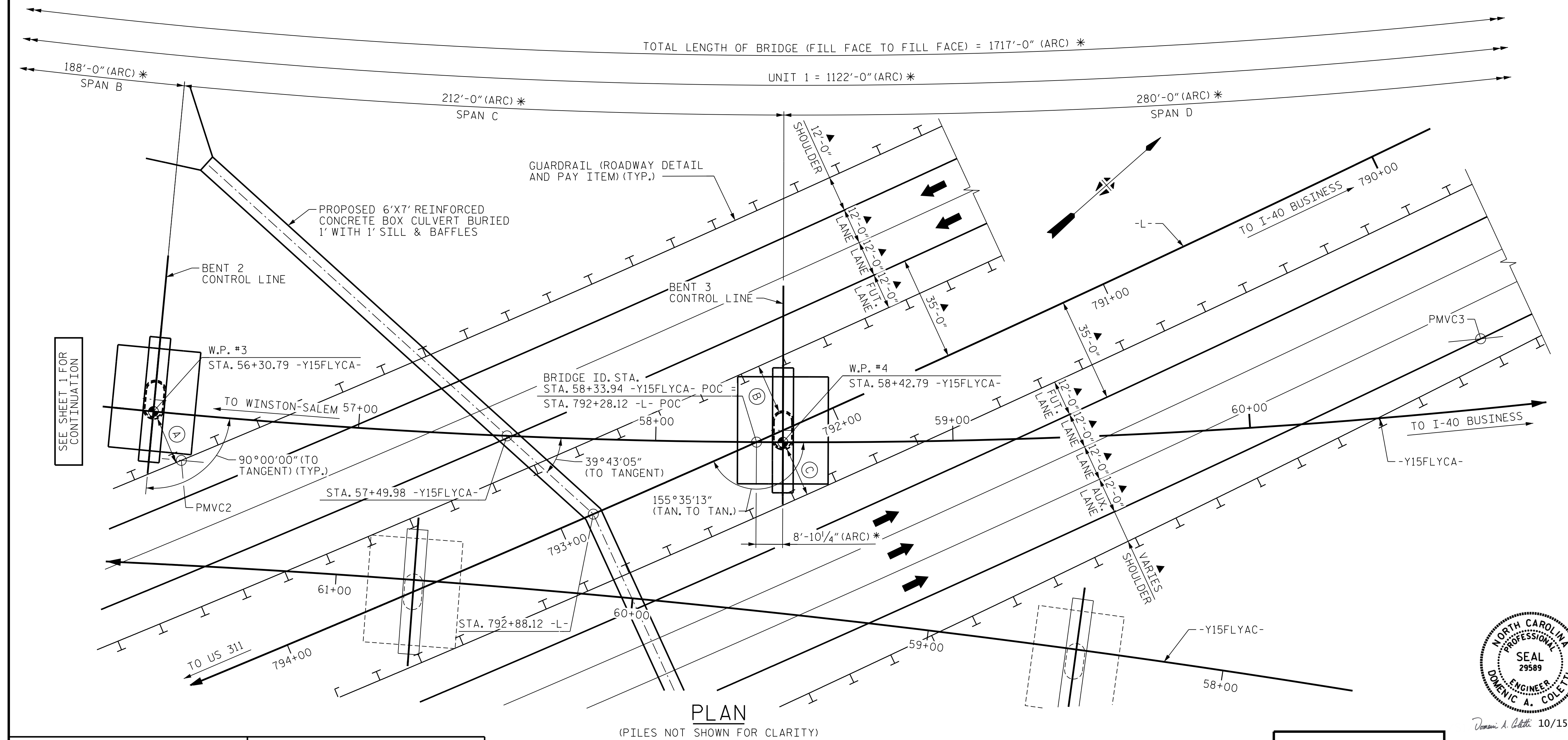


+2.7484% -5.0000%  
 PVI STA. 61+30.00  
 PVI EL. = 942.25  
 VC = 1175.00'  
 GRADE DATA  
 -Y15FLYCA-

LOCATION	ROADWAY ABOVE		ELEV. ON ROADWAY ABOVE	ROADWAY BELOW		ELEV. ON ROADWAY BELOW
	STATION	OFFSET		STATION	OFFSET	
PMVC2	56+41.61 -Y15FLYCA-	15.50' (RT)	929.43	794+09.00 -L-	71.00' (RT)	874.87
PMVC3	60+80.13 -Y15FLYCA-	23.50' (LT)	929.94	789+93.71 -L-	71.00' (LT)	869.29



(A)	16'-1" MIN. HORIZ. CLEAR TO FACE OF COLUMN ▲
(B)	16'-9" MIN. HORIZ. CLEAR TO FACE OF COLUMN ▲
(C)	16'-9" MIN. HORIZ. CLEAR TO FACE OF COLUMN ▲

**HORIZONTAL CURVE DATA -Y15FLYCA-**  
 PI STA. 65+16.52  
 $\Delta = 103^\circ 35' 56.2''$  (LT.)  
 D = 02°28'10.7"  
 L = 4,194.89'  
 T = 2,948.14'  
 R = 2,320.00'

**HORIZONTAL CURVE DATA -L-**  
 PI STA. 795+15.62  
 $\Delta = 29^\circ 47' 50.6''$  (RT.)  
 D = 00°44'58.0"  
 L = 3,975.88'  
 T = 2,033.99'  
 R = 7,645.00'

\* = DIMENSION MEASURED ALONG -Y15FLYCA-  
 ▲ = RADIAL DIMENSION

PROJECT NO. U-2579AB  
 FORSYTH COUNTY  
 STATION: 58+33.94 -Y15FLYCA-  
 SHEET 2 OF 10

STATE OF NORTH CAROLINA  
 DEPARTMENT OF TRANSPORTATION  
 RALEIGH

**GENERAL DRAWING**  
 BRIDGE ON -Y15FLYCA- IN INTERCHANGE CONNECTING WINSTON-SALEM NORTHERN BELTWAY AND I-40 BYPASS BETWEEN SR 4315 AND SR 2679

NO.	BY:	DATE:	NO.	BY:	DATE:
1	--	--	3	--	--
2	--	--	4	--	--

SHEET NO. S06-002  
 TOTAL SHEETS 129



10/15/2021

**HDR** HDR Engineering, Inc. of the Carolinas  
 555 Fayetteville St., Suite 900 Raleigh, N.C. 27601  
 N.C.B.E.L.S. License Number: F-0116

DOCUMENT NOT CONSIDERED FINAL UNLESS ALL SIGNATURES COMPLETED

PLOT DRIVER: NCDOT\_pdf\_color\_eng-50.ppt  
 USER: PPEIERSO DATE: 10/14/2021  
 PENTABLE: NCDOT\_STRUCTURES\_DEFAULT\_PEN.tbl  
 TIME: 5:10:02 PM  
 FILE: ... \GENERA

DES BY: S. NIFONG	DATE: 06/19	DWG BY: B. PETERSON	DATE: 06/19
DES CHK: M. NEIHEISEL	DATE: 06/19	CHK BY: S. NIFONG	DATE: 06/19