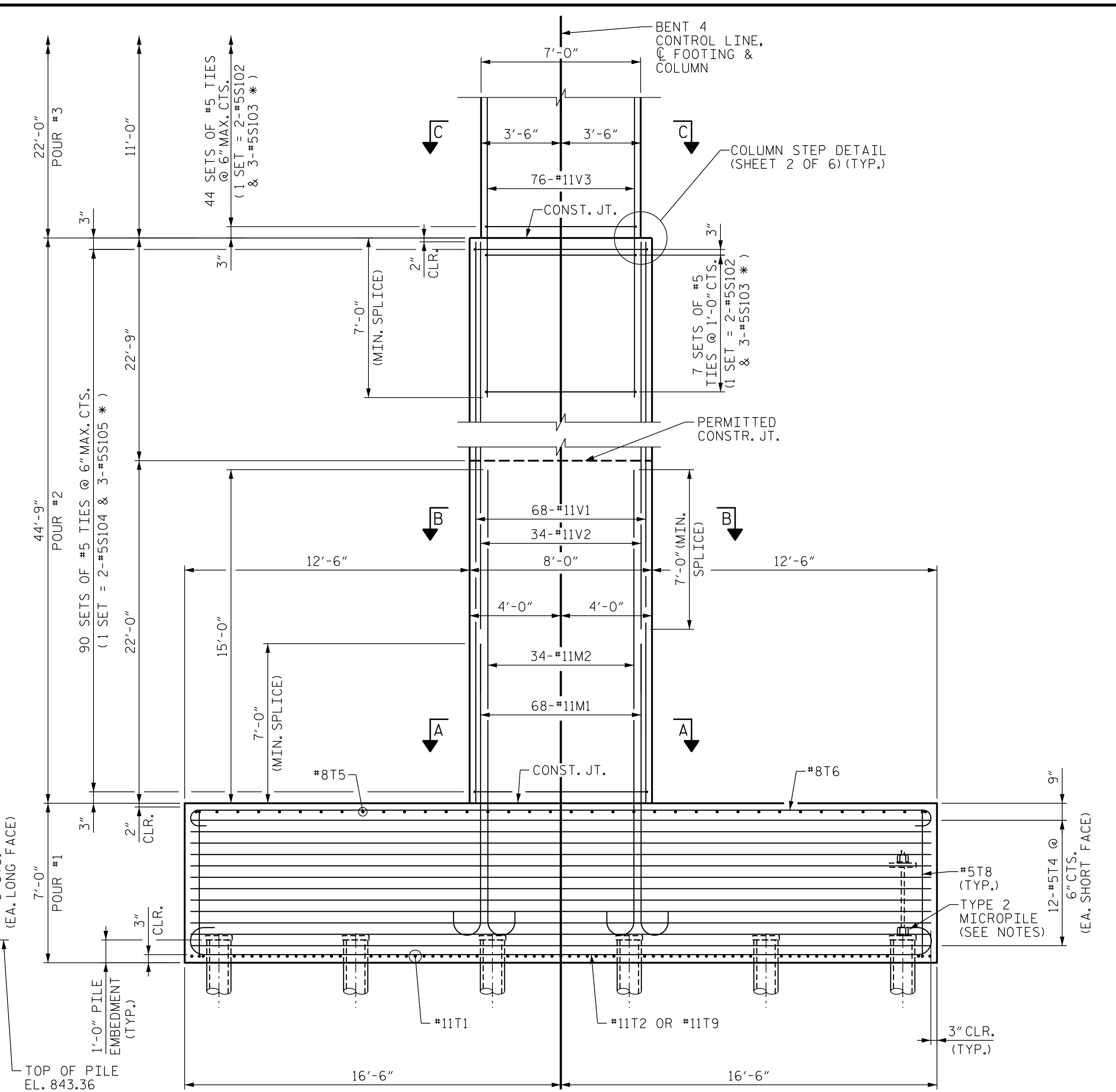


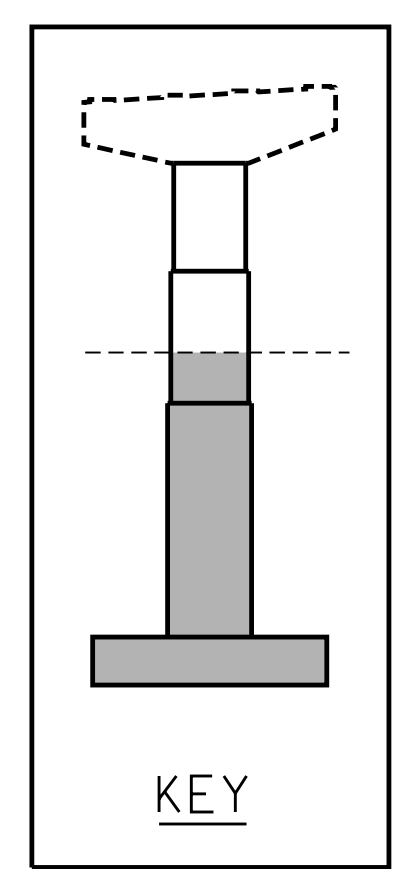
PARTIAL FRONT ELEVATION



PARTIAL END ELEVATION

\* INVERT ORIENTATION OF ALTERNATE #5S103 AND #5S105 TIES

- NOTES**
- FOR FOOTING PLAN, SECTION A-A AND SECTION B-B, SEE "SUBSTRUCTURE BENT 4 FOOTING & COLUMN DETAILS", SHEET 3 OF 6.
  - FOR ADDITIONAL NOTES, SEE "SUBSTRUCTURE BENT 1 ELEVATIONS", SHEET 1 OF 5.
  - FOR SECTION C-C, SEE "SUBSTRUCTURE BENT 4 BENT CAP DETAILS", SHEET 5 OF 6.
  - FOR MICROPILE DETAILS, SEE "SUBSTRUCTURE MICROPILE DETAILS" SHEET.
  - FOR LOCATIONS OF TYPE 2 MICROPILES, SEE "SUBSTRUCTURE BENT 4 FOOTING & COLUMN DETAILS", SHEET 3 OF 6.



PROJECT NO. U-2579AB  
 FORSYTH COUNTY  
 STATION: 47+63.62 -Y15FLYBD-  
 SHEET 1 OF 6



STATE OF NORTH CAROLINA  
 DEPARTMENT OF TRANSPORTATION  
 RALEIGH

**SUBSTRUCTURE BENT 4 ELEVATIONS**

PLOT DRIVER: NCDOT.pdf\_color\_eng-50dpi  
 USER: PPETERSO DATE: 10/11/2021  
 FILE: ...SUBSTR

DES BY: K. OLIVER	DATE: 11/19	DWG BY: B. PETERSON	DATE: 11/19
DES CHK: N. LIU	DATE: 11/19	CHK BY: N. LIU	DATE: 12/19



REVISIONS						SHEET NO. S05-092 TOTAL SHEETS 116
NO.	BY:	DATE:	NO.	BY:	DATE:	
1	--	--	3	--	--	
2	--	--	4	--	--	

DOCUMENT NOT CONSIDERED FINAL UNLESS ALL SIGNATURES COMPLETED