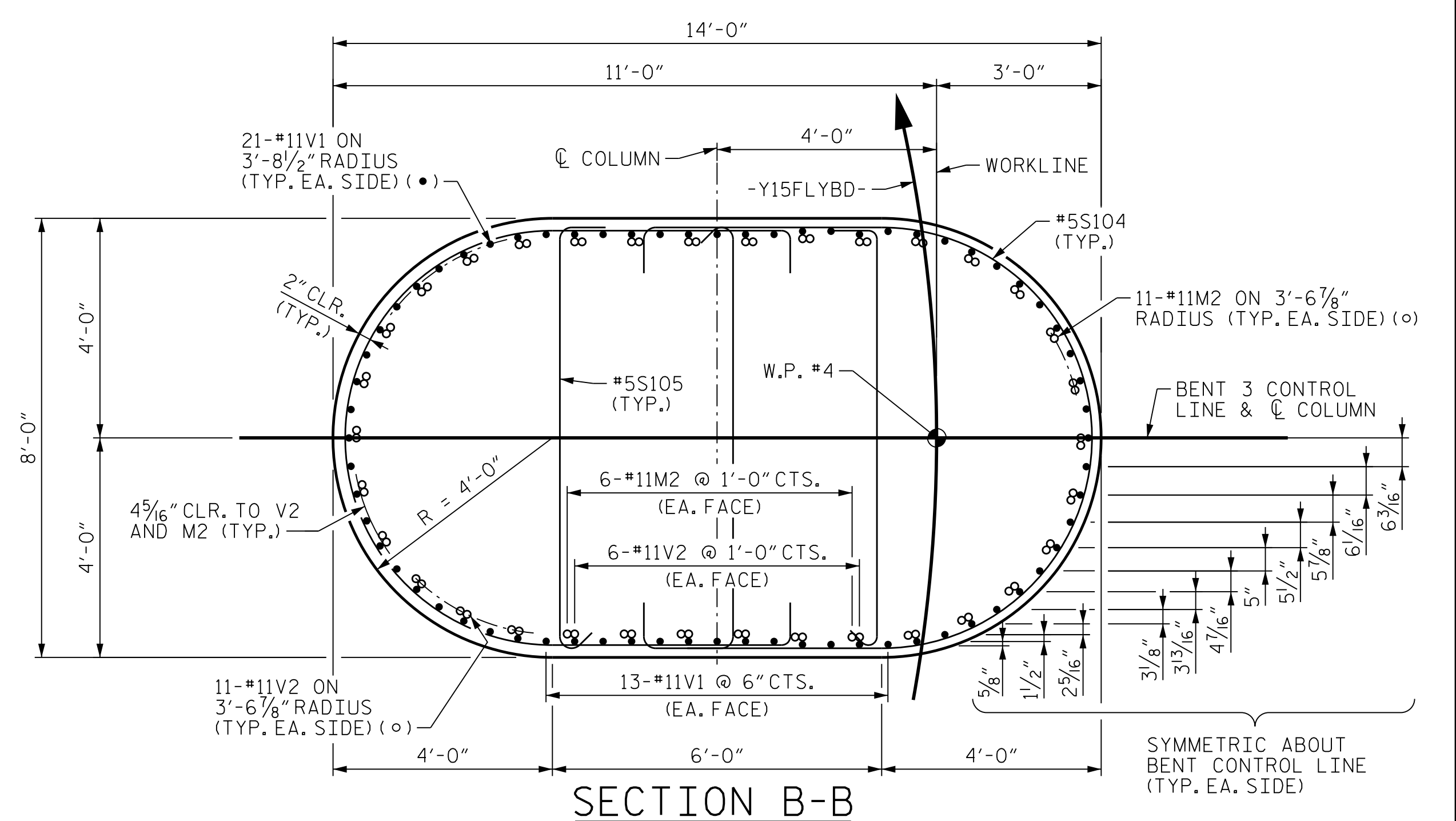


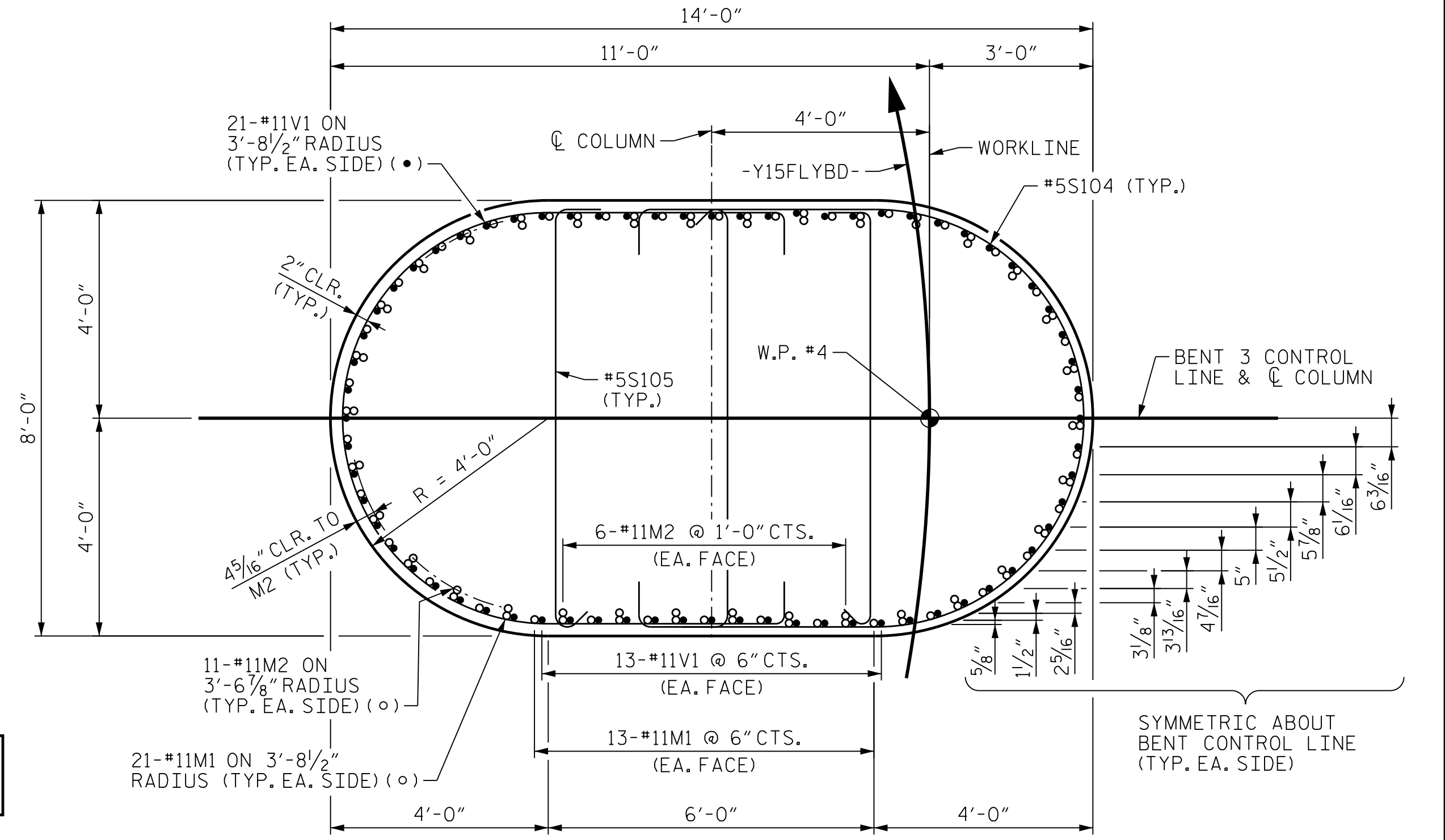
FOOTING PLAN

**NOTES**  
 FOR MICROPILE DETAILS, SEE "SUBSTRUCTURE MICROPILE DETAILS" SHEET.  
 FOR ADDITIONAL NOTES, SEE "SUBSTRUCTURE BENT 1 ELEVATIONS", SHEET 1 OF 5.

DES BY: K. OLIVER	DATE: 11/19	DWG BY: B. PETERSON	DATE: 11/19
DES CHK: N. LIU	DATE: 11/19	CHK BY: N. LIU	DATE: 12/19



SECTION B-B



SECTION A-A

PROJECT NO. U-2579AB

FORSYTH COUNTY

STATION: 47+63.62 -Y15FLYBD-

SHEET 3 OF 6

STATE OF NORTH CAROLINA  
 DEPARTMENT OF TRANSPORTATION  
 RALEIGH

**SUBSTRUCTURE  
 BENT 3  
 FOOTING & COLUMN  
 DETAILS**



REVISIONS					
NO.	BY:	DATE:	NO.	BY:	DATE:
1	--	--	3	--	--
2	--	--	4	--	--



DOCUMENT NOT CONSIDERED FINAL  
 UNLESS ALL SIGNATURES COMPLETED

SHEET NO. S05-088
TOTAL SHEETS 116

PLOT DRIVER: NCDOT\_pdf\_color\_eng-50dpi  
 USER: PPETERSO DATE: 10/17/2021  
 FILE: ...SUBSTR  
 PENTABLE: NCDOT STRUCTURES DEFAULT PEN.tbl  
 TIME: 8:27:31 AM