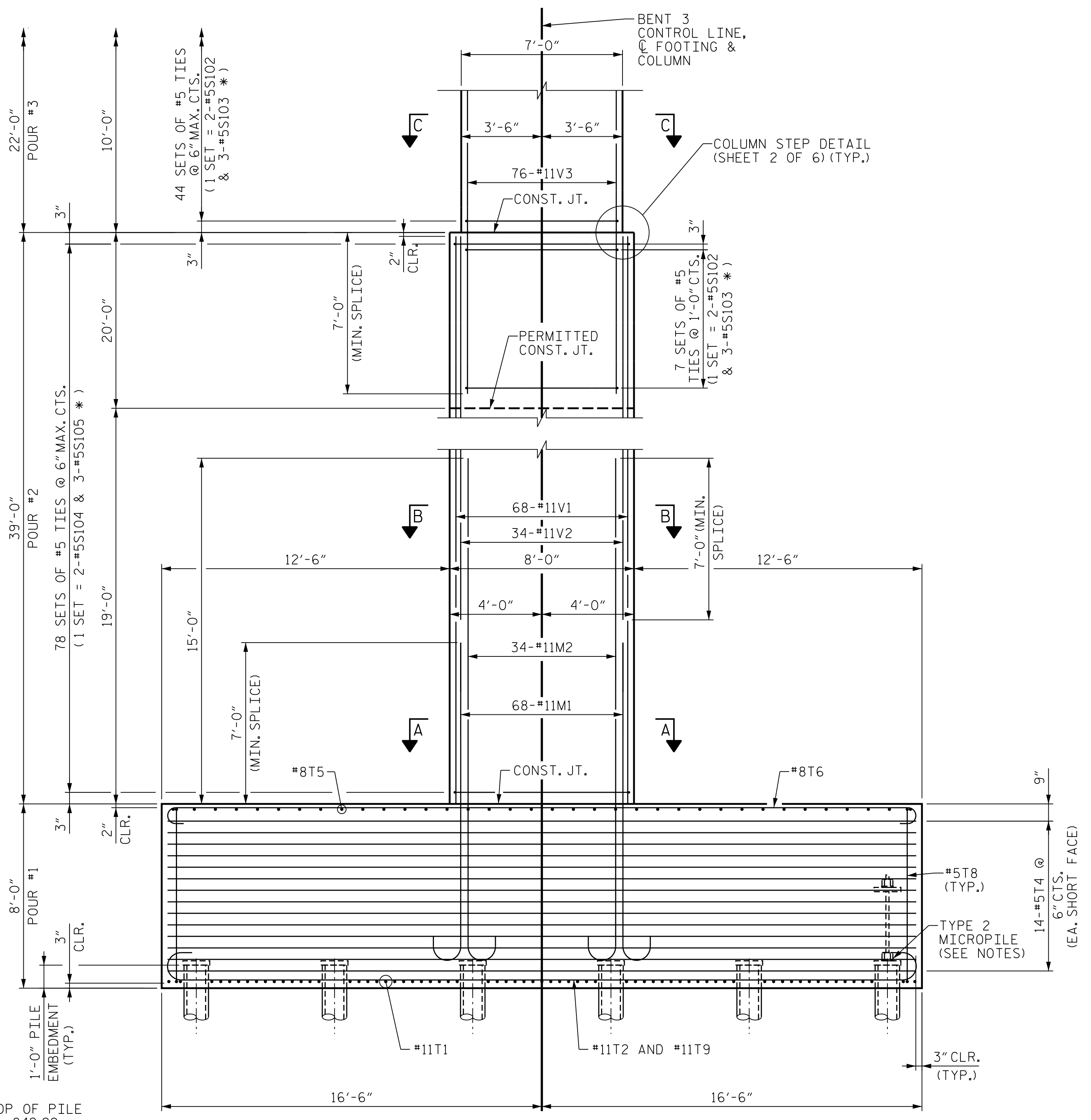


PARTIAL FRONT ELEVATION

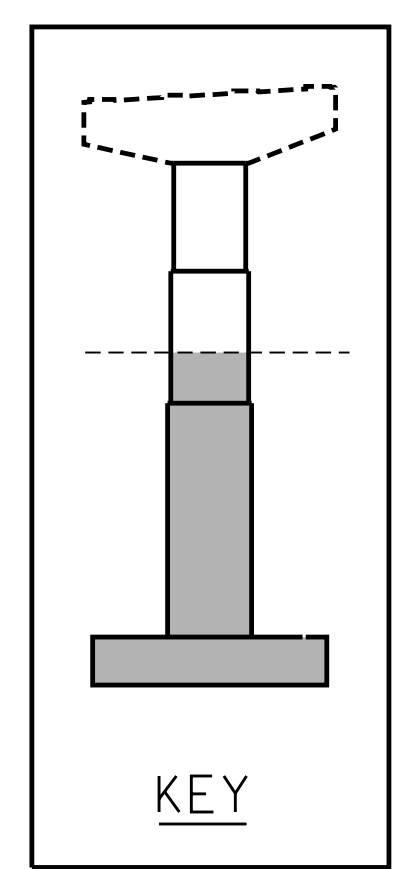


PARTIAL END ELEVATION

* INVERT ORIENTATION OF ALTERNATE #5S103 AND #5S105 TIES

NOTES

- FOR FOOTING PLAN, SECTION A-A AND SECTION B-B, SEE "SUBSTRUCTURE BENT 3 FOOTING & COLUMN DETAILS", SHEET 3 OF 6.
- FOR ADDITIONAL NOTES, SEE "SUBSTRUCTURE BENT 1 ELEVATIONS", SHEET 1 OF 5.
- FOR SECTION C-C, SEE "SUBSTRUCTURE BENT 3 BENT CAP DETAILS", SHEET 5 OF 6.
- FOR MICROPILE DETAILS, SEE "SUBSTRUCTURE MICROPILE DETAILS" SHEET.
- FOR LOCATIONS OF TYPE 2 MICROPILES, SEE "SUBSTRUCTURE BENT 3 FOOTING & COLUMN DETAILS", SHEET 3 OF 6.



PROJECT NO. U-2579AB
 FORSYTH COUNTY
 STATION: 47+63.62 -Y15FLYBD-

SHEET 1 OF 6

STATE OF NORTH CAROLINA
 DEPARTMENT OF TRANSPORTATION
 RALEIGH

SUBSTRUCTURE BENT 3 ELEVATIONS



10/11/2021

REVISIONS						SHEET NO. S05-086 TOTAL SHEETS 116
NO.	BY:	DATE:	NO.	BY:	DATE:	
1	--	--	3	--	--	
2	--	--	4	--	--	

HDR HDR Engineering, Inc. of the Carolinas
 555 Fayetteville St., Suite 900 Raleigh, N.C. 27601
 N.C.B.E.L.S. License Number: F-0116

DOCUMENT NOT CONSIDERED FINAL UNLESS ALL SIGNATURES COMPLETED

PLOT DRIVER: NCDOT_pdf_color_eng-50.ppt
 USER: PPETERSO DATE: 10/17/2021
 PENTABLE: NCDOT STRUCTURES DEFAULT PEN.tbl
 TIME: 8:27:13 AM
 FILE: ...SUBSTR

DES BY: K. OLIVER	DATE: 11/19	DWG BY: B. PETERSON	DATE: 11/19
DES CHK: N. LIU	DATE: 11/19	CHK BY: N. LIU	DATE: 12/19