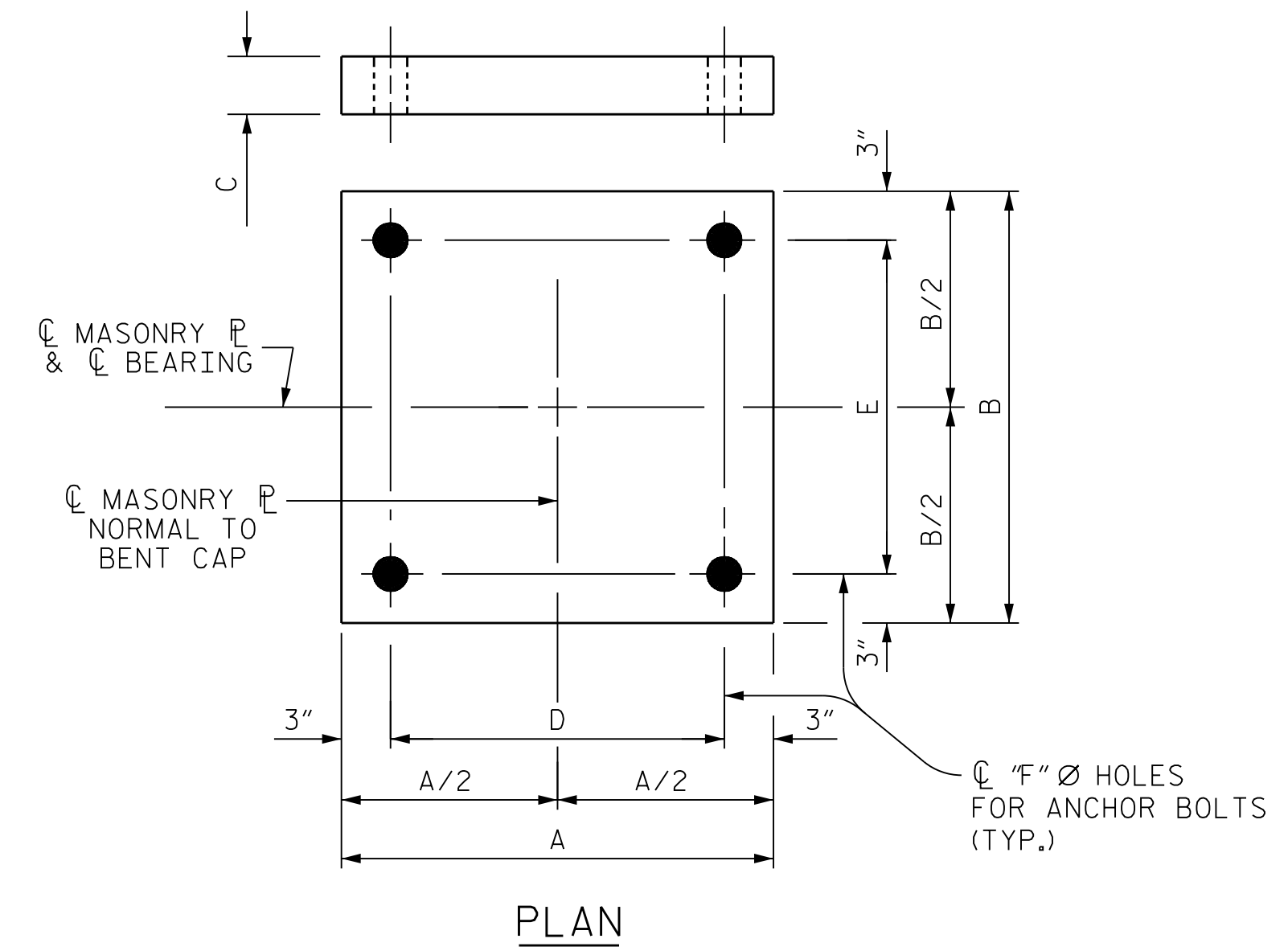


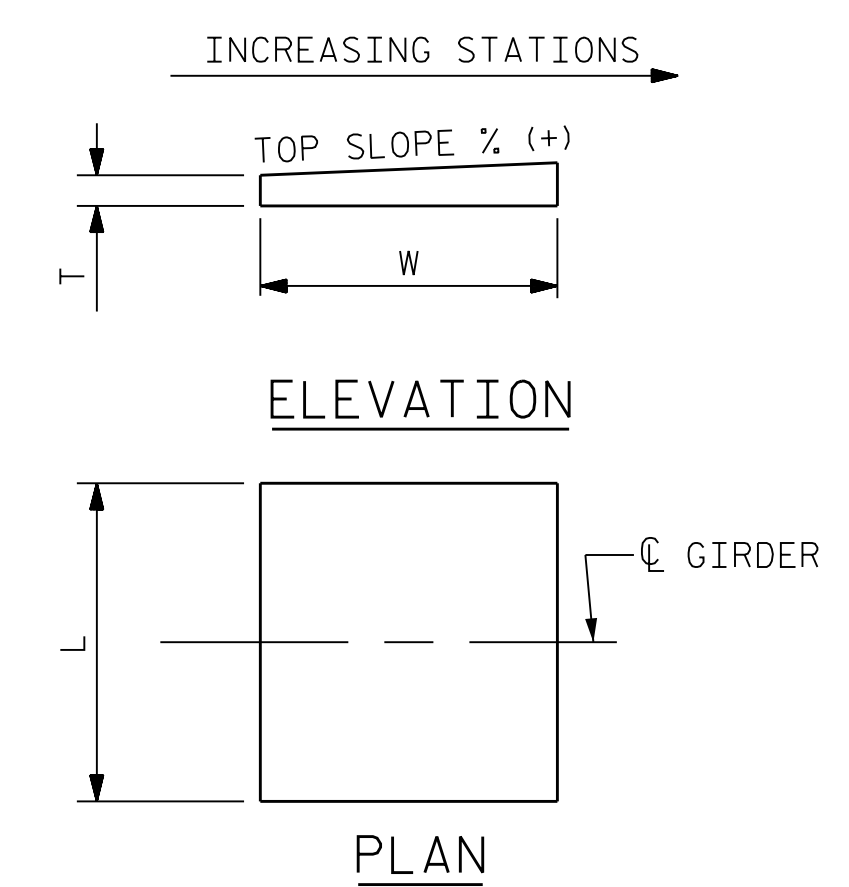
DESIGNATIONS				DIMENSIONS											LOADS AND MOVEMENT					
BEARINGS	MASONRY	LOCATION	NUMBER OF BEARINGS	BEARING	MASONRY PLATE						SOLE PLATE	ANCHOR BOLT DIAMETER (IN.)	ANCHOR BOLT PROJECTION	TOTAL ANCHOR BOLT LENGTH	4" Ø STD. PIPE LENGTH (IN.)	UNFACTORED VERTICAL LOAD (KIPS)			FACTORED HORIZONTAL LOAD (KIPS)	** ONE-WAY MOVEMENT
					H	A	B	C	D	E						F	TOP SLOPE (%)	DC		
DB1 (EXP.)	M1	END BENT 1	4	6 1/2"	2'-3"	2'-3"	3/4"	1'-9"	1'-9"	1 15/16"	4.1000%	1 1/2"	2 1/8"	1'-6"	1'-3 1/4"	173	22	140	67	2 9/16"
DB2 (EXP.)	M2	BENT 1	4	9 3/8"	3'-0"	3'-0"	1"	2'-6"	2'-6"	2 7/16"	4.1000%	2"	2 1/2"	1'-10"	1'-6 1/4"	493	59	264	171	1 5/16"
DB3 (FIXED)	M3	BENT 2	4	7"	2'-2 1/2"	2'-2 1/2"	1"	1'-8 1/2"	1'-8 1/2"	1 15/16"	4.1000%	1 1/2"	2 1/8"	1'-6 1/4"	N/A	392	50	252	142	0"
DB4 (EXP.)	M4	BENT 3	4	8 3/4"	2'-10 1/2"	2'-10 1/2"	1"	2'-4 1/2"	2'-4 1/2"	2 7/16"	3.8161%	2"	2 1/2"	1'-10"	1'-6 1/4"	441	55	253	156	1 5/16"
DB5 (EXP.)	M1	BENT 4 BK	4	6 1/4"	2'-3"	2'-3"	3/4"	1'-9"	1'-9"	1 15/16"	2.9184%	1 1/2"	2 1/8"	1'-6"	1'-3 1/4"	135	18	129	55	2 1/16"
DB6 (EXP.)	M1	BENT 4 AHD	4	6 1/4"	2'-3"	2'-3"	3/4"	1'-9"	1'-9"	1 15/16"	2.9000%	1 1/2"	2 1/8"	1'-6"	1'-3 1/4"	170	22	143	66	2 9/16"
DB7 (FIXED)	M5	BENT 5	4	7 1/2"	2'-6"	2'-6"	1"	2'-0"	2'-0"	2 7/16"	1.8300%	2"	2 1/2"	1'-10"	N/A	550	65	274	188	0"
DB8 (FIXED)	M6	BENT 6	4	7 3/4"	2'-8"	2'-8"	1 1/4"	2'-2"	2'-2"	2 7/16"	0.5200%	2"	2 1/2"	1'-10"	N/A	591	69	283	201	0"
DB9 (EXP.)	M1	END BENT 2	4	6"	2'-3"	2'-3"	3/4"	1'-9"	1'-9"	1 15/16"	-0.6400%	1 1/2"	2 1/8"	1'-6"	1'-3 1/4"	203	25	149	76	2 1/16"

** "ONE-WAY MOVEMENT" REPRESENTS THE FULL MOVEMENT RANGE EXPECTED TO OCCUR OVER A TEMPERATURE RANGE FROM 10° F TO 110° F. THE BEARING SOLE PLATE AND UPPER SLIDING SURFACE SHOULD BE CENTERED ON THE BEARING AT 60° F. SEE TABLE FOR "PLATE SETTING DATA" FOR SETTING DATA FOR OTHER TEMPERATURES.

▲ ANCHOR BOLT PROJECTION IS MEASURED ABOVE TOP OF BEARING SEAT CONCRETE.



MASONRY PLATE DETAILS

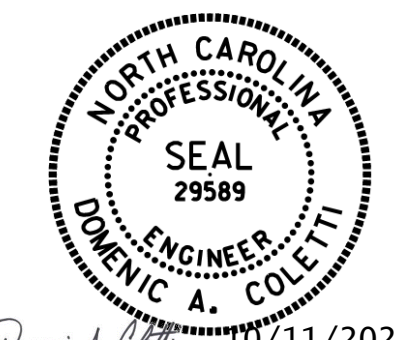


NOTE: DIMENSIONS "L", "W", AND "T" SHALL BE DETERMINED BY THE BEARING MANUFACTURER, SET DIMENSION "L" SUCH THAT THE MINIMUM EDGE DISTANCE TO THE GIRDER FLANGE IS 1".

SOLE PLATE DETAILS

PROJECT NO. U-2579AB
 FORSYTH COUNTY
 STATION: 47+63.62 -Y15FLYBD-

SHEET 2 OF 3

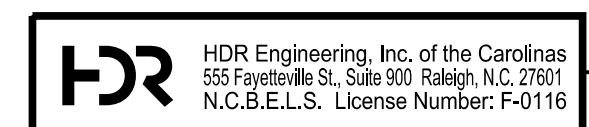


10/11/2021

STATE OF NORTH CAROLINA
 DEPARTMENT OF TRANSPORTATION
 RALEIGH

**SUPERSTRUCTURE
 DISC BEARING
 DETAILS**

REVISIONS						SHEET NO. S05-051
NO.	BY:	DATE:	NO.	BY:	DATE:	
1	--	--	3	--	--	TOTAL SHEETS 116
2	--	--	4	--	--	



DOCUMENT NOT CONSIDERED FINAL
 UNLESS ALL SIGNATURES COMPLETED

PLOT DRIVER: NCDOT... PENTABLE: NCDOT STRUCTURES DEFAULT... PEN.tbl
 USER: PPETERSO... DATE: 10/11/2021
 FILE: ... \SUPERS

DES BY: S. NIFONG	DATE: 07/19	DWG BY: B. PETERSON	DATE: 07/19
DES CHK: D. COLETTI	DATE: 07/19	CHK BY: G. SCHMITZ	DATE: 11/19