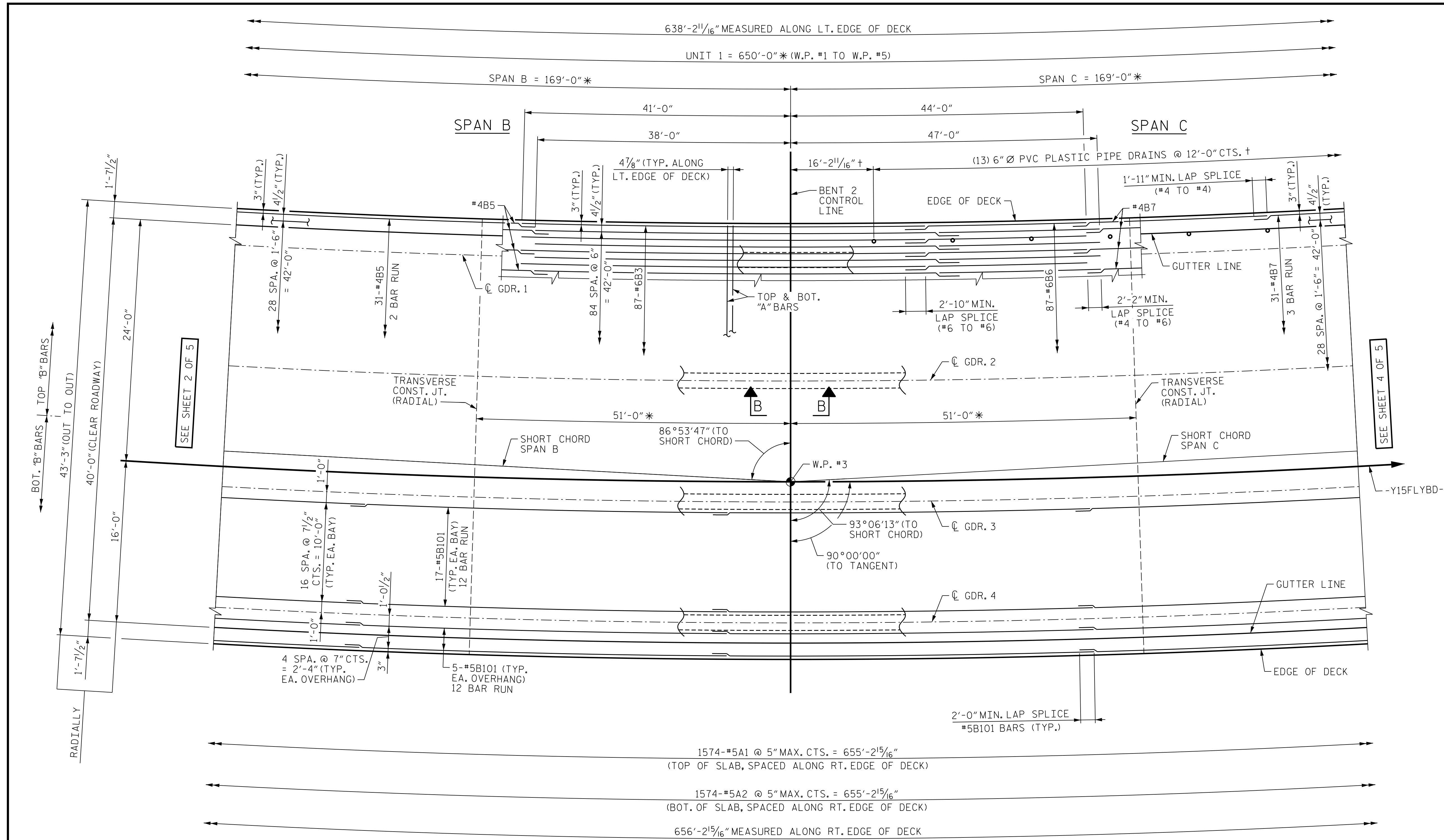


PLOT DRIVER: NCDOT... PENTABLE: NCDOT STRUCTURES DEFAULT PEN.tbl  
 USER: PPEIERSO DATE: 10/11/2021  
 TIME: 8:20:46 AM  
 FILE: ... \SUPERS

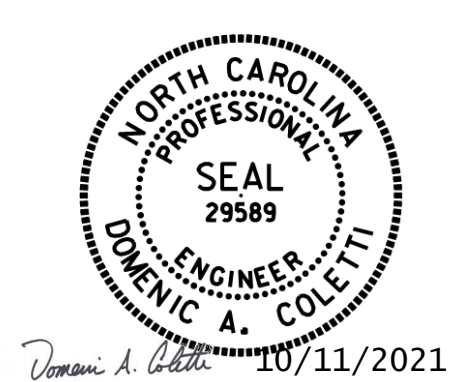


**PARTIAL PLAN OF SPANS - UNIT 1**

\* = DIMENSIONS MEASURED ALONG -Y15FLYBD-  
 † = DIMENSIONS MEASURED ALONG LEFT EDGE OF DECK

**NOTES**  
 FOR SECTION B-B, SEE "SUPERSTRUCTURE TYPICAL SECTION" SHEET 1 OF 2.  
 SEE "SUPERSTRUCTURE PLAN OF SPANS ARC OFFSETS" SHEET 1 OF 2 FOR OUTSIDE EDGE OF DECK CURVE OFFSETS.  
 FOR REINFORCING STEEL IN CONCRETE BARRIER RAIL, SEE "SUPERSTRUCTURE CONCRETE BARRIER RAIL" SHEETS.  
 #5 "A" BARS ARE TO BE PLACED RADIALLY SPACED AT 5" MAX. CTS. ALONG RIGHT OUTSIDE EDGE OF SUPERSTRUCTURE.  
 FOR DECK POURING SEQUENCE, SEE "SUPERSTRUCTURE BILL OF MATERIALS" SHEET.  
 FOR TRANSVERSE CONST. JT. DETAIL, SEE SHEET 1 OF 5.

PROJECT NO. U-2579AB  
 FORSYTH COUNTY  
 STATION: 47+63.62 -Y15FLYBD-  
 SHEET 3 OF 5



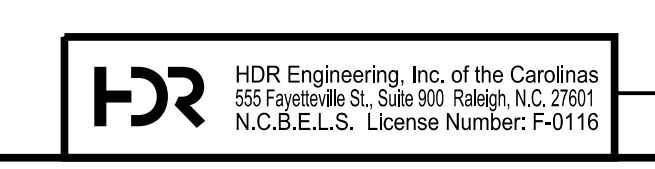
STATE OF NORTH CAROLINA  
 DEPARTMENT OF TRANSPORTATION  
 RALEIGH

**SUPERSTRUCTURE PLAN OF SPANS UNIT 1**

REVISIONS					
NO.	BY:	DATE:	NO.	BY:	DATE:
1	--	--	3	--	--
2	--	--	4	--	--

SHEET NO. S05-021  
 TOTAL SHEETS 116

DES BY: S. NIFONG DATE: 07/19  
 DES CHK: G. SCHMITZ DATE: 07/19  
 DWG BY: B. PETERSON DATE: 07/19  
 CHK BY: S. NIFONG DATE: 10/19



DOCUMENT NOT CONSIDERED FINAL  
 UNLESS ALL SIGNATURES COMPLETED