

**NOTES**

PROVIDE 1/4" HIGH BEAM BOLSTER UPPER (BBU) AT 4'-0" MAX. CENTERS ATOP THE METAL STAY-IN-PLACE FORMS TO SUPPORT THE BOTTOM MAT OF "A" BARS. WHEN USING REMOVABLE FORMS, PROVIDE CONTINUOUS HIGH CHAIRS FOR METAL DECK (C.H.C.M.) @ 4'-0" MAX. CENTERS WITH HEIGHT TO SUPPORT THE BOTTOM MAT OF "A" BARS A CLEAR DISTANCE OF 2 1/2" ABOVE THE TOP OF THE REMOVABLE FORM.

FOR EXPANSION JOINT SEALS, SEE SPECIAL PROVISIONS.

METAL STAY-IN-PLACE FORMS SHALL NOT BE WELDED TO GIRDER FLANGES IN THE ZONES REQUIRING CHARPY V-NOTCH TEST. SEE STRUCTURAL STEEL DETAILS SHEETS.

PREVIOUSLY CAST CONCRETE IN A CONTINUOUS UNIT SHALL HAVE ATTAINED A MINIMUM COMPRESSIVE STRENGTH OF 3,000 PSI BEFORE ADDITIONAL CONCRETE IS CAST IN THE UNIT.

STRUCTURAL STEEL ERECTION IN A CONTINUOUS UNIT SHALL BE COMPLETE BEFORE FALSEWORK OR FORMS ARE PLACED ON THE UNIT.

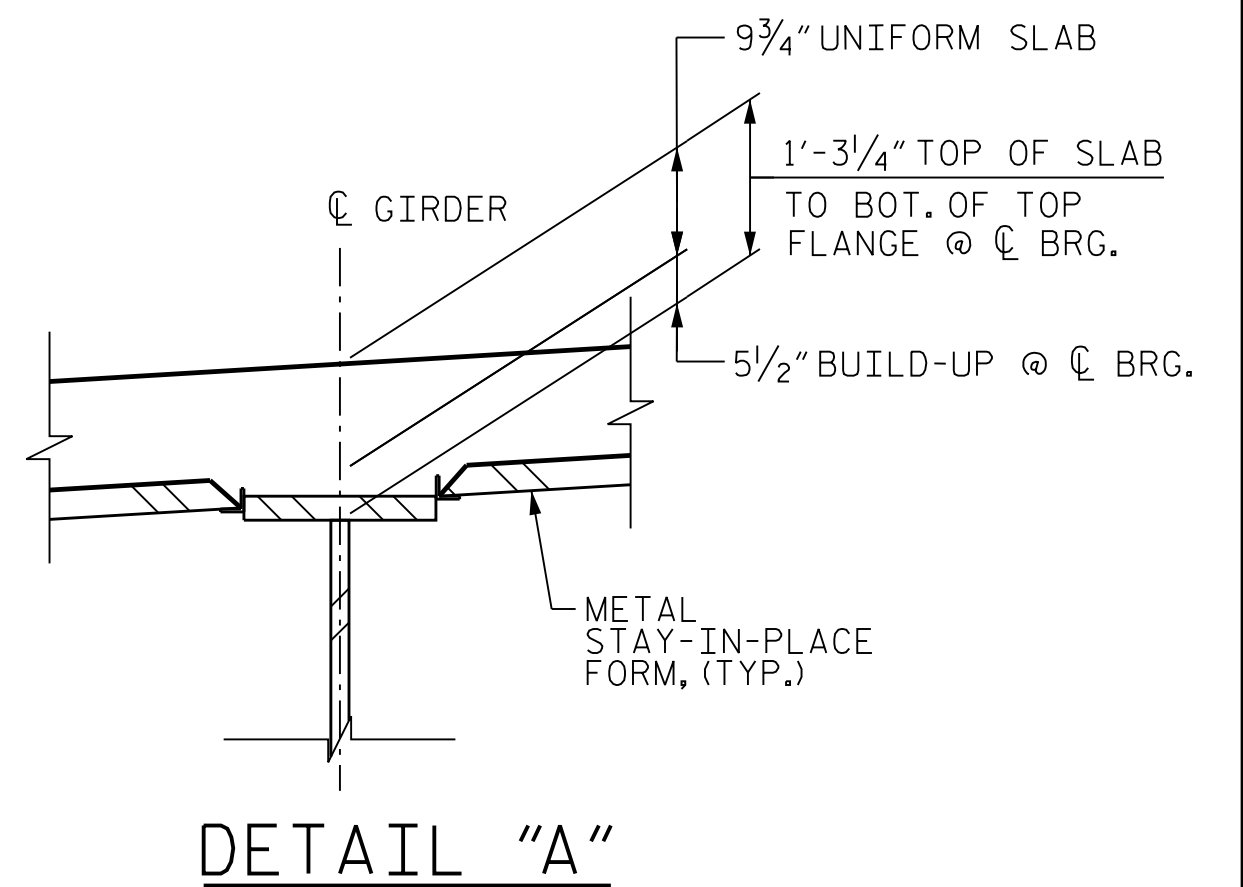
THE CONTRACTOR MAY, WHEN NECESSARY, PROPOSE A SCHEME FOR AVOIDING INTERFERENCE BETWEEN METAL STAY-IN-PLACE FORM SUPPORTS OR FORMS AND BEAM/GIRDERS STIFFENERS OR CONNECTOR PLATES. THE PROPOSAL SHALL BE INDICATED, AS APPROPRIATE, ON EITHER THE STEEL WORKING DRAWINGS OR THE METAL STAY-IN-PLACE FORM WORKING DRAWINGS.

BARRIER RAIL IN A CONTINUOUS UNIT SHALL NOT BE CAST UNTIL ALL SLAB CONCRETE IN THAT UNIT HAS BEEN CAST AND HAS REACHED A MINIMUM COMPRESSIVE STRENGTH OF 3,000 PSI.

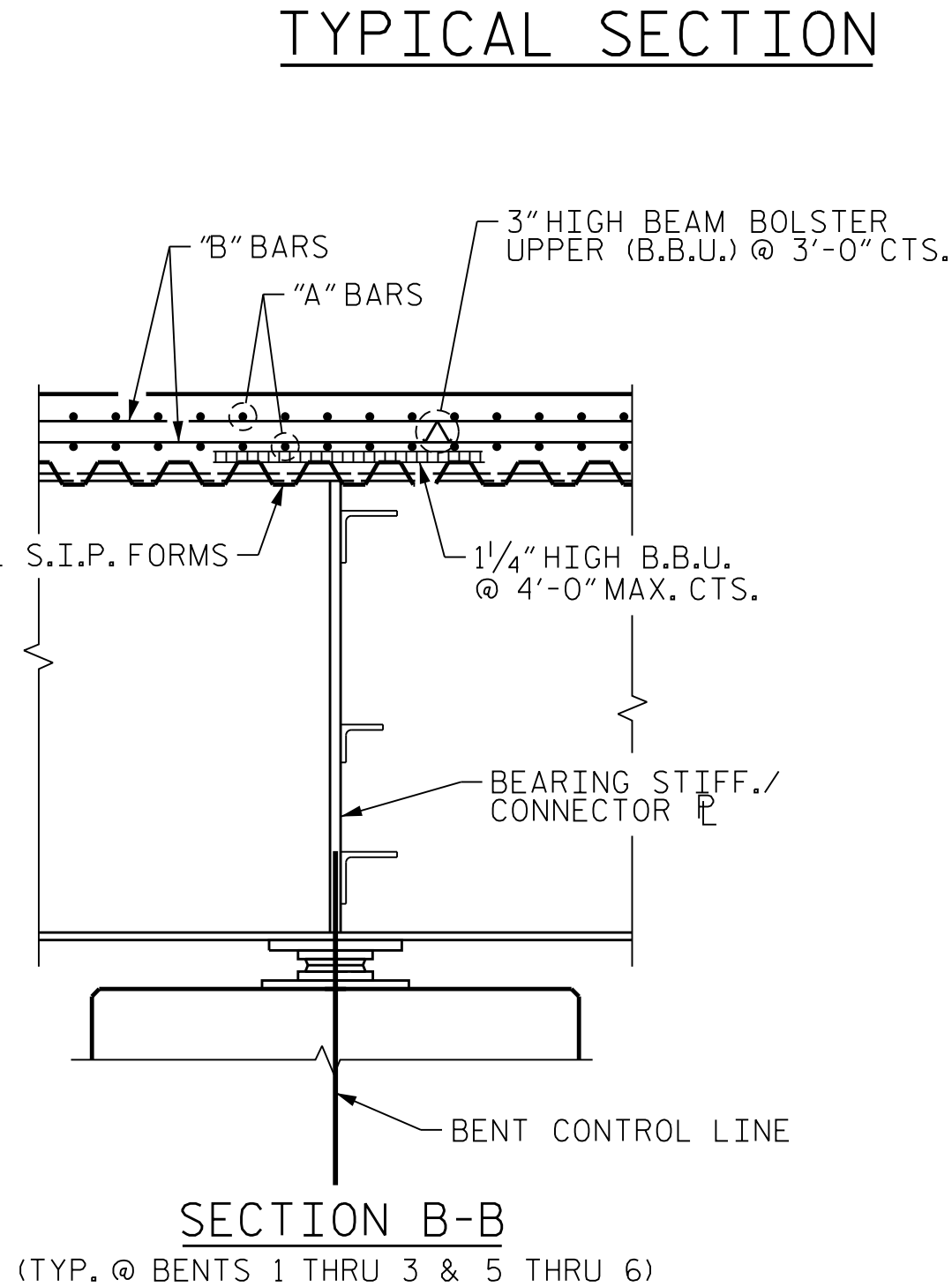
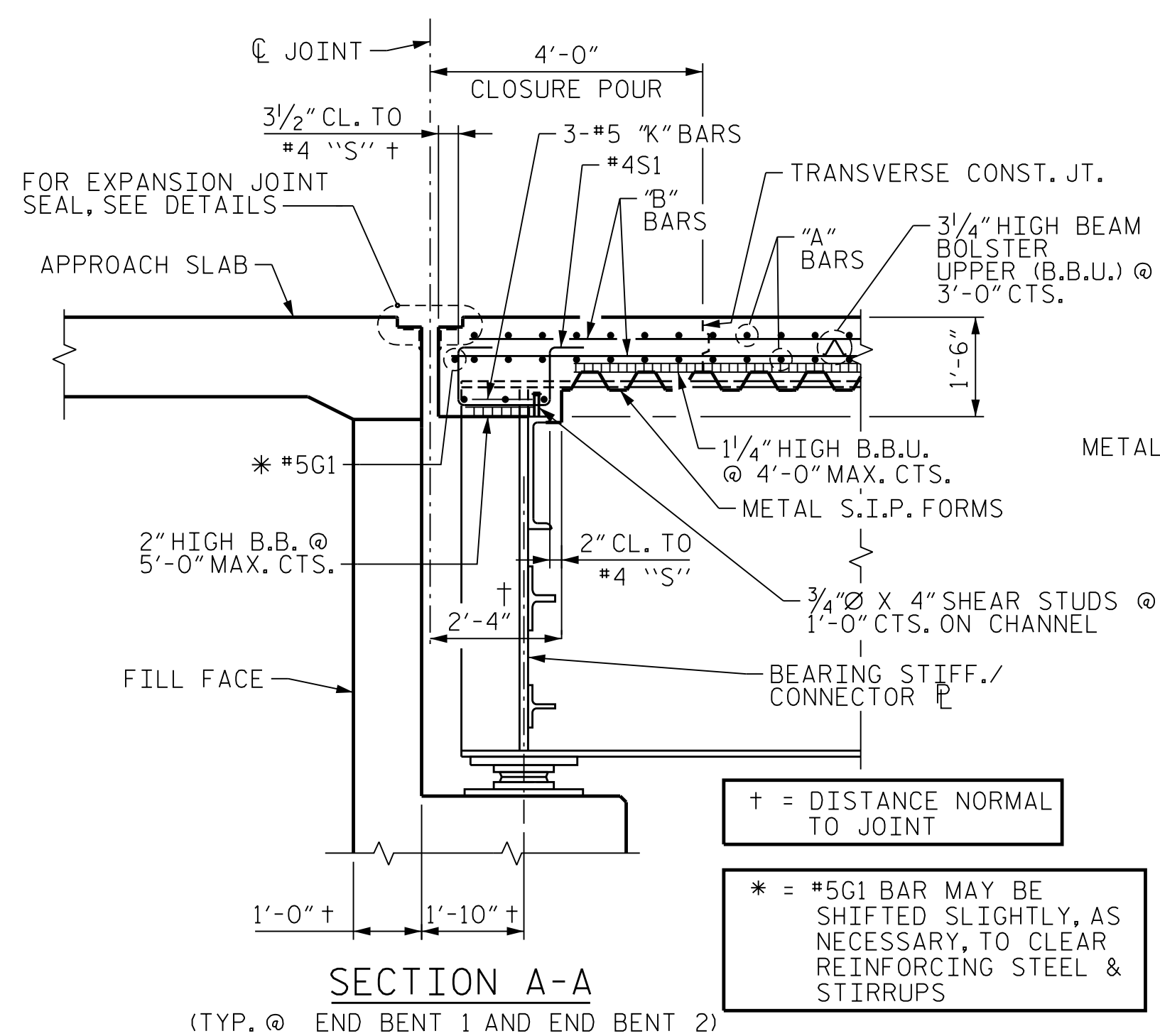
**SECTION AT INTERMEDIATE & BENT DIAPHRAGM**  
(TYP. @ BENTS 1 THRU 3 & 5 THRU 6)

**SECTION AT END BENT DIAPHRAGM**  
(TYP. @ END BENT 1 & END BENT 2)

**TYPICAL SECTION**



END DIAPHRAGM "K" BARS			
BENT	UNIT	GIRDER LOCATION	
		INTERIOR	EXTERIOR
END BENT 1	1	#5K2	#5K1
END BENT 2	2	#5K4	#5K3



+ = DISTANCE NORMAL TO JOINT

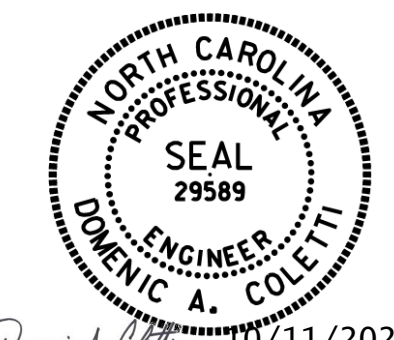
\* = #5G1 BAR MAY BE SHIFTED SLIGHTLY, AS NECESSARY, TO CLEAR REINFORCING STEEL & STIRRUPS

PROJECT NO. U-2579AB

FORSYTH COUNTY

STATION: 47+63.62 -Y15FLYBD-

SHEET 1 OF 2



STATE OF NORTH CAROLINA  
DEPARTMENT OF TRANSPORTATION  
RALEIGH

**SUPERSTRUCTURE  
TYPICAL SECTION**

REVISIONS					
NO.	BY:	DATE:	NO.	BY:	DATE:
1	--	--	3	--	--
2	--	--	4	--	--

SHEET NO. S05-017  
TOTAL SHEETS 116

PLOT DRIVER: NCDOT...  
 USER: PPETERSO...  
 DATE: 10/11/2021...  
 TIME: 8:20:19 AM...  
 FILE: ... \ASUPERS

DES BY: S. NIFONG DATE: 07/19  
 DES CHK: G. SCHMITZ DATE: 07/19  
 DWG BY: B. PETERSON DATE: 07/19  
 CHK BY: S. NIFONG DATE: 08/19



DOCUMENT NOT CONSIDERED FINAL  
UNLESS ALL SIGNATURES COMPLETED